

A nighttime photograph of a cityscape reflected in a body of water. The city lights are visible in the distance, and the water in the foreground shows clear reflections of the lights and the sky. The overall scene is dark with a blue and white color palette.

SINTEF Technology and Society

We create value and develop solutions to challenges faced by society.

SINTEF Main Strategy

Strategy

SINTEF Technology and Society is a multidisciplinary research institute that is active in the fields of industry, technology and the social sciences. We create knowledge and solutions for private industry and public authorities in the fields of health, care and welfare, oil and gas, safe societies, dignified working conditions, a sustainable working life, efficient and safe transport systems, and climate and the environment.



The Societal Challenges

Our research is performed with the aim to solve the societal challenges within the following areas:

- Health, demographic change and welfare
- Smart, green and integrated transport
- Climate action, environment, resource efficiency and raw materials
- Europe in a changing world - inclusive, innovative and reflective societies
- Industrial safety and secure societies
- Work, industry and society



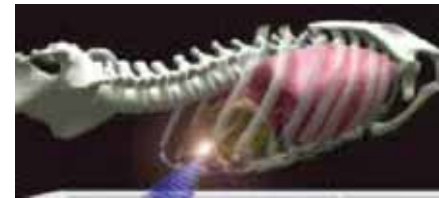
Six Research Departments



Applied Economics



Health Research



Medical Technology



Per J. Lillestøl
Executive Vice President



Safety Research



Industrial Management



Transport Research



Research Support

Applied Economics

Our research focus is development of better decision making both in commercial businesses and public administration. It is all about understanding the actors behaviour, and use theory and methods to model and optimize complex relations. Our theory base is business economics and social economics in combination with operations research.

Research groups

- Social Economics and Business Economics
- Risk and Vulnerability





Health Research

Department of Health Research is working with research and development in the health and welfare services both in and outside the workplace.

Research groups

- Design
- Global Health and Welfare
- Health Services Research
- Work and Health
- Work Physiology

Research Director Randi E. Reinertsen

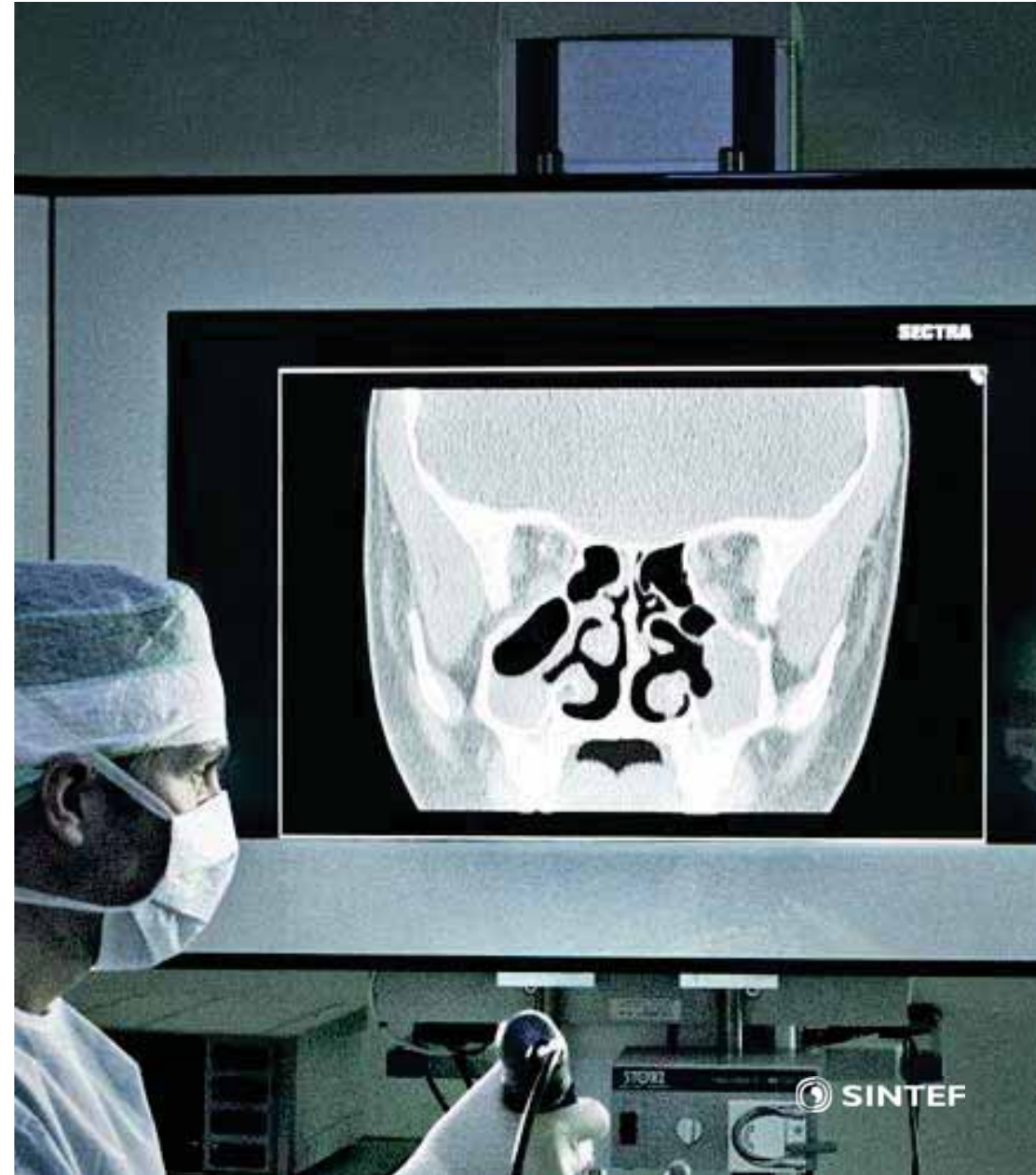
Medical Technology

We develop new technology and solutions that offers patients more reliable diagnoses and improved treatment, and based on the health sector's needs, we help to create new industrial activity.

Research groups

- Innovation in the Health Sector
- Ultrasound and Image Guided Therapy

Research Director Thomas Langø



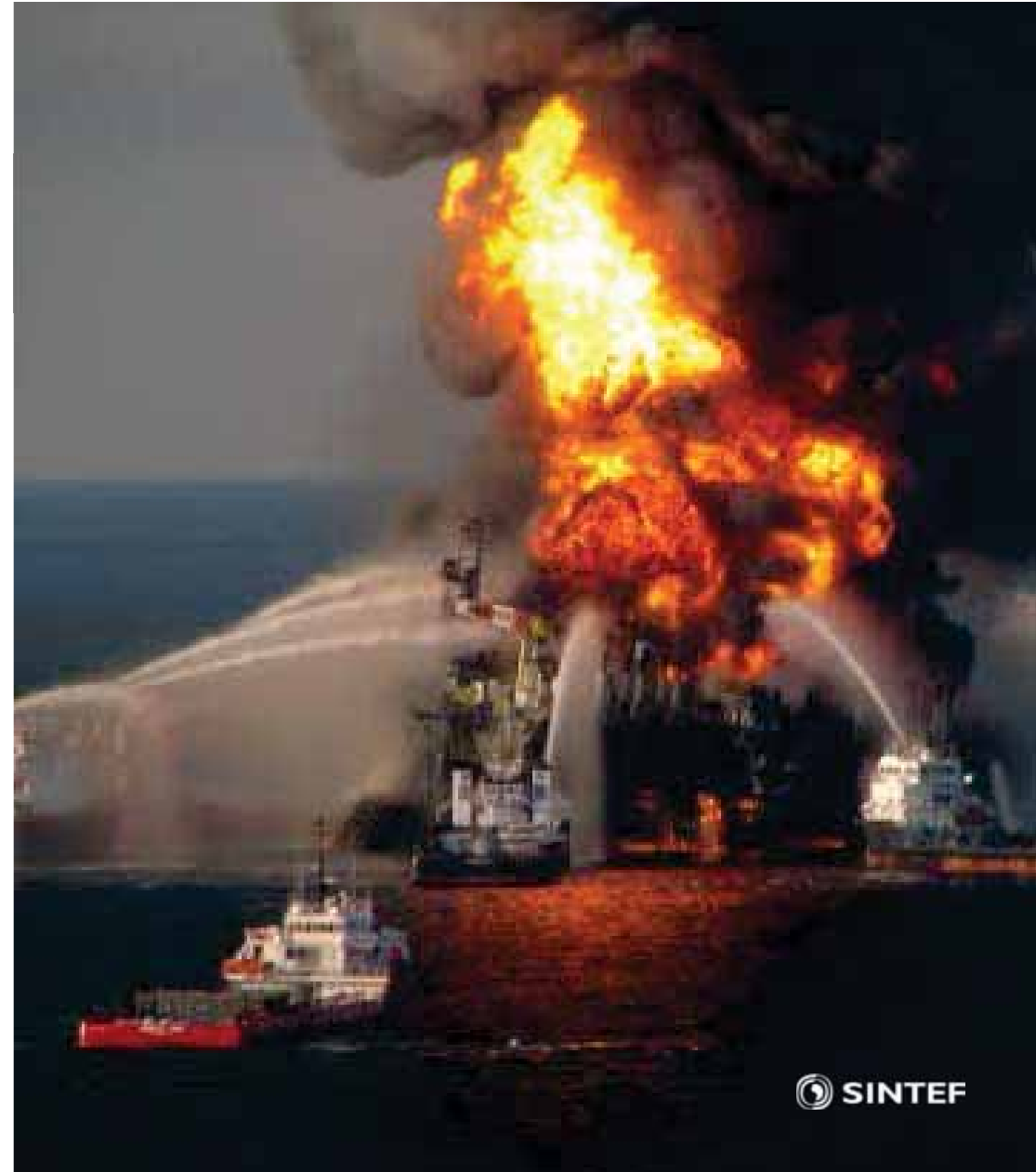
Safety Research

Public demand for safety at work and in our leisure activities continues to grow. At the same time, fierce competition is forcing industry to improve productivity by providing more reliable products and services at lower cost.

Research groups

- Industrial Safety and Reliability
- Organisation and Learning
- Societal Safety and Security

Research Director Stian Antonsen





Industrial Management

Within Industrial Management we are conducting research and development for the industry and the public sector. We have an interdisciplinary working environment focusing on the interaction between technology, human, organization and society.

Research groups

- Applied Process Intelligence
- Operations Management
- Productivity and Project Management
- Regional Development
- Work Research

Research Director Tore Nilssen

Transport Research

We are a national center of expertise in transport research with a technological base. Our research is based on the multidisciplinary approach and teamwork. Transportation will be safe, effective, accessible to all and involve a low resource consumption.

Research Expertise

- Accessable Transport
- Freight Transport
- Road and Transportation Planning
- Traffic Behaviour
- Transport and Environment
- Transport Models
- Transport Safety

11

Research Director Roar Norvik





Research Support

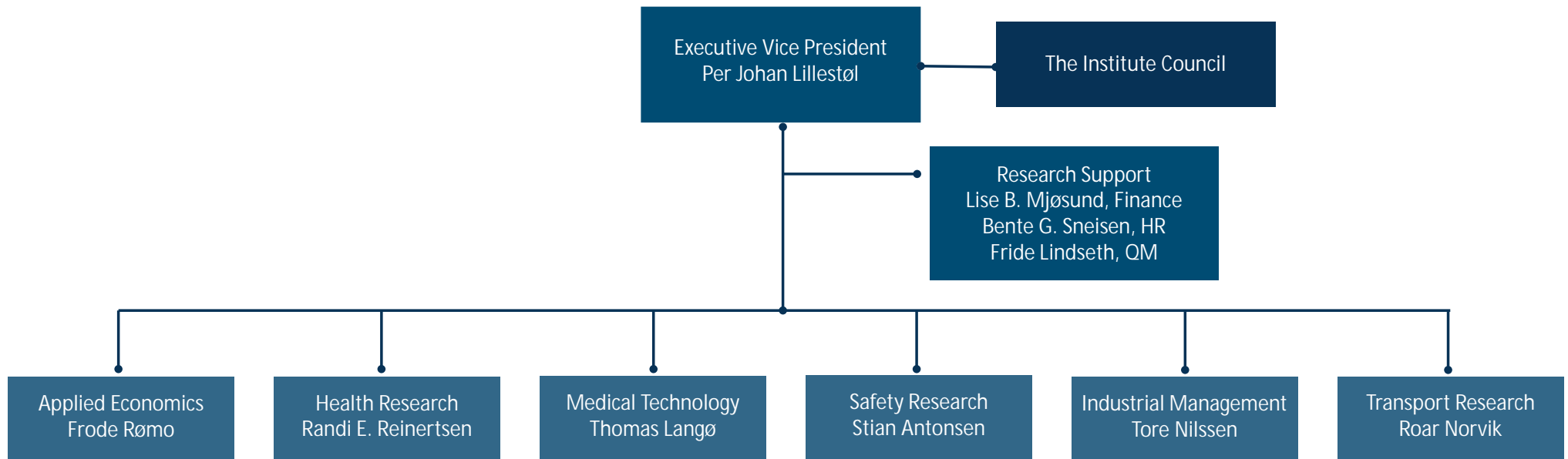
- Finance
- Human Relations
- Quality and Security
- Readiness
- Project Administration
- Health, Safety and Environment
- Organisation Development
- ICT
- Communication

Lise Bedsvaag Mjøsund, Financial Manager

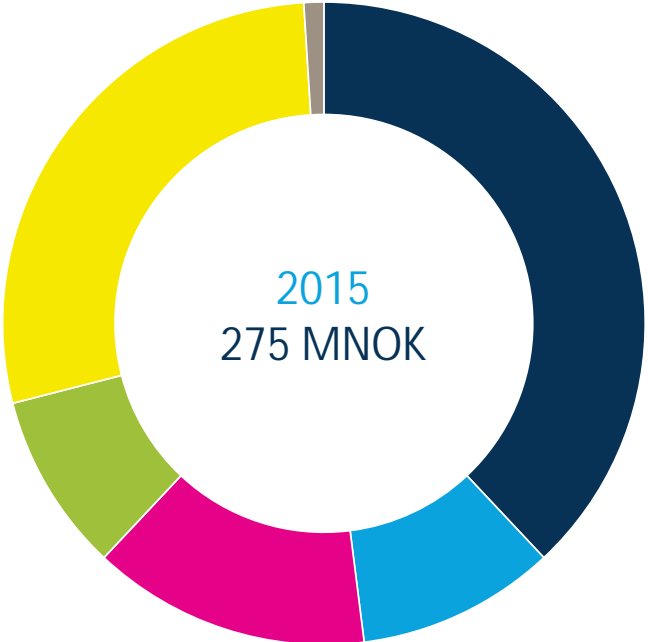
Bente Gundersen Sneisen, HR Manager

Fride Lindseth, Quality and Security Manager

SINTEF Technology and Society

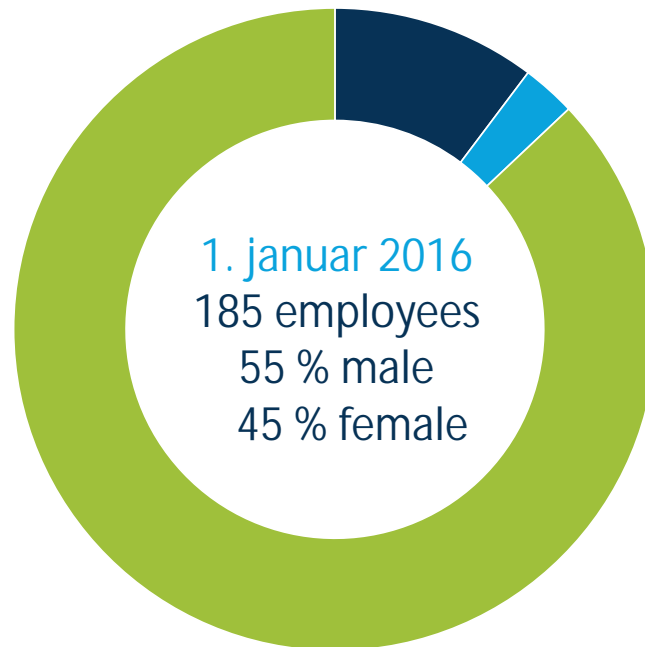


Income Sources



- Business and Industry 38 %
- RCN Basic Grants 7 %
- RCN Project Grants 14 %
- International Contracts 9 %
- Public Sector Contracts 28 %
- Other Sources 1 %

Employees

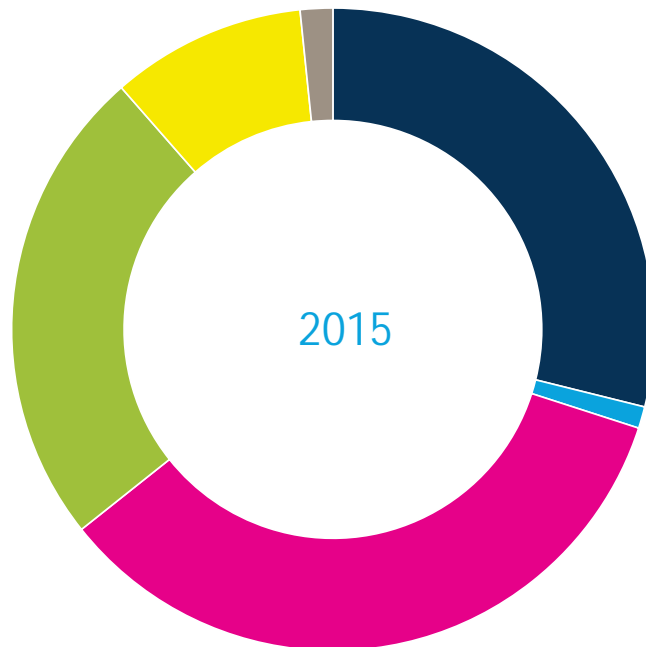


■ Administration 19

■ Engineers 5

■ Researchers 161

Publications



- Academic articles 106
- Academic monograph 4
- Academic lecture and poster 126
- Reports 89
- Popular articles and talks 36
- Textbooks, etc. 6



Technology for a better society