

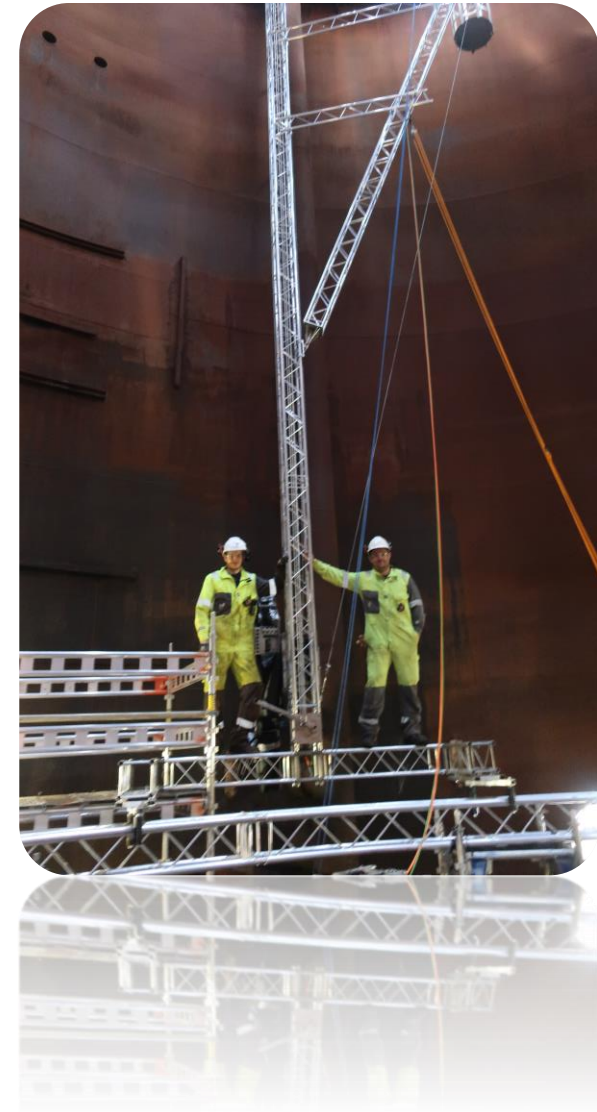
## Paint robot - replacing elevated work

Light house area – inspection and maintenance  
European Robotics Forum 2020



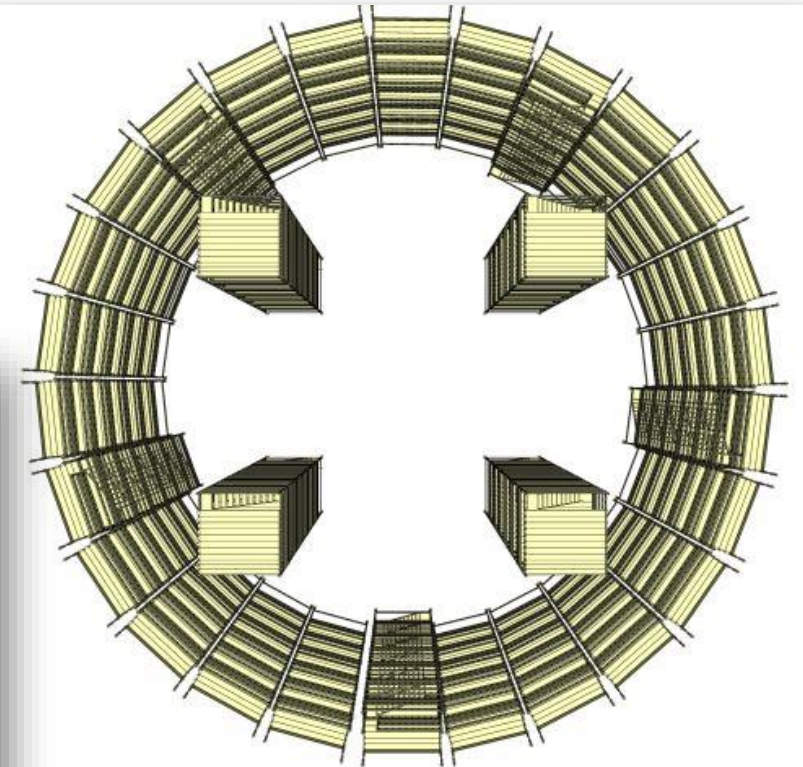
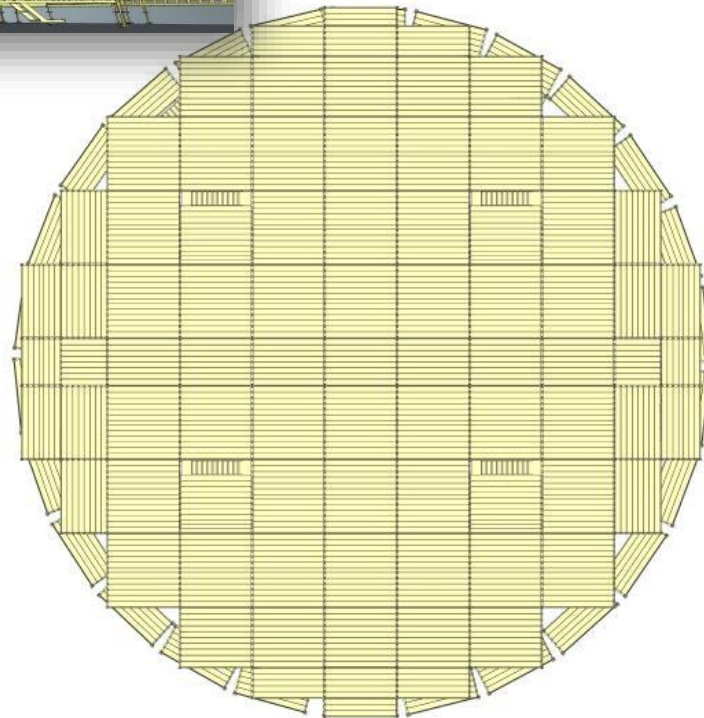
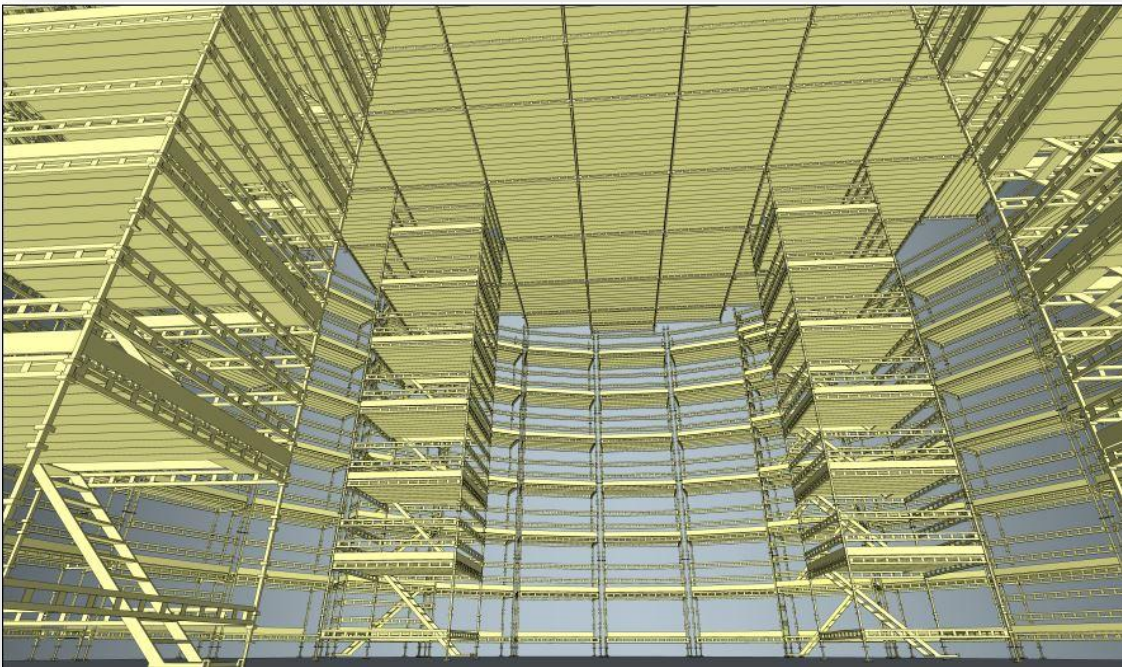
# Outline

- Challenge
- Where did we find a similar solution
- Evolvment
- Status





## Challenge – elevated work/confined space



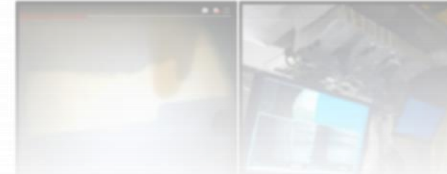


# Surface Dynamics



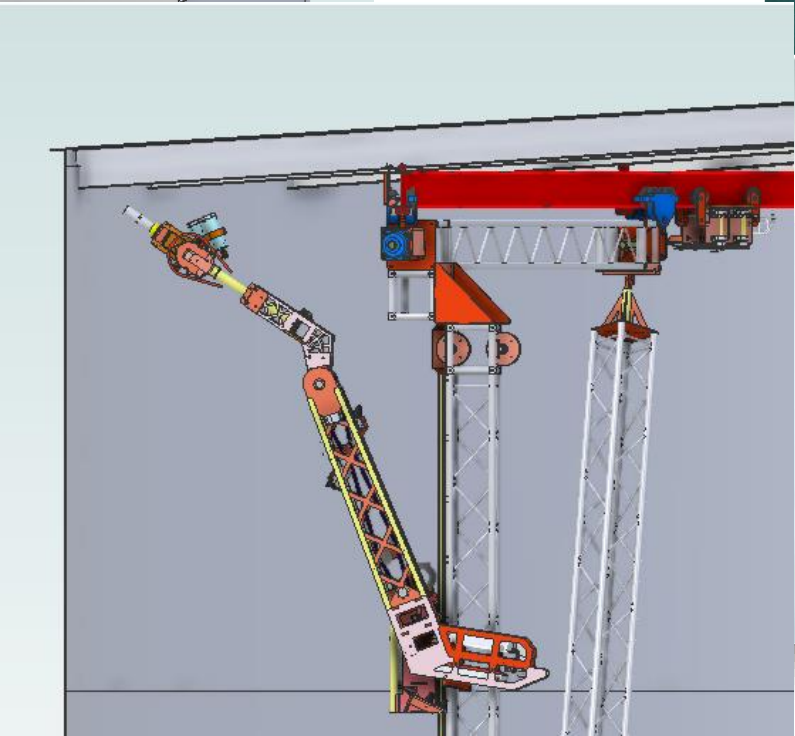
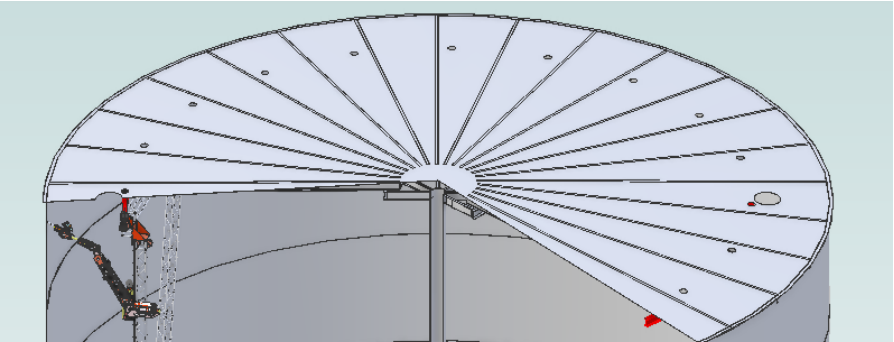
- Originally from cleaning of pipes for Hydro power stations
- Early prototypes and testing
- Combination of academia and manufacturing
- Creative mindset constantly looking for improvement and customer needs

Surface Dynamics AS



# New way of working

Pilot at Mongstad refinery







Thank you for  
your attention!



## Paint robot

Anders Røyrøy, Equinor R&T

© Equinor ASA

This presentation, including the contents and arrangement of the contents of each individual page or the collection of the pages, is owned by Equinor. Copyright to all material including, but not limited to, written material, photographs, drawings, images, tables and data remains the property of Equinor. All rights reserved. Any other use, reproduction, translation, adaption, arrangement, alteration, distribution or storage of this presentation, in whole or in part, without the prior written permission of Equinor is prohibited. The information contained in this presentation may not be accurate, up to date or applicable to the circumstances of any particular case, despite our efforts. Equinor cannot accept any liability for any inaccuracies or omissions.