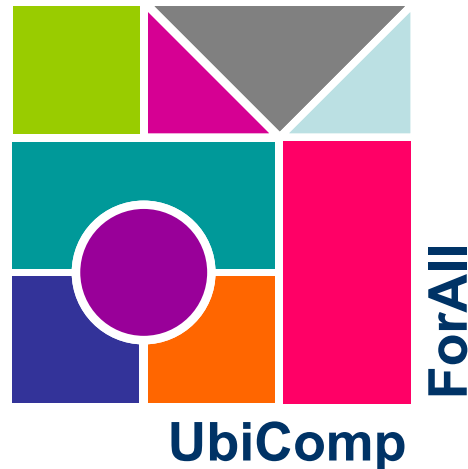


# A Framework for User-Tailored City Exploration

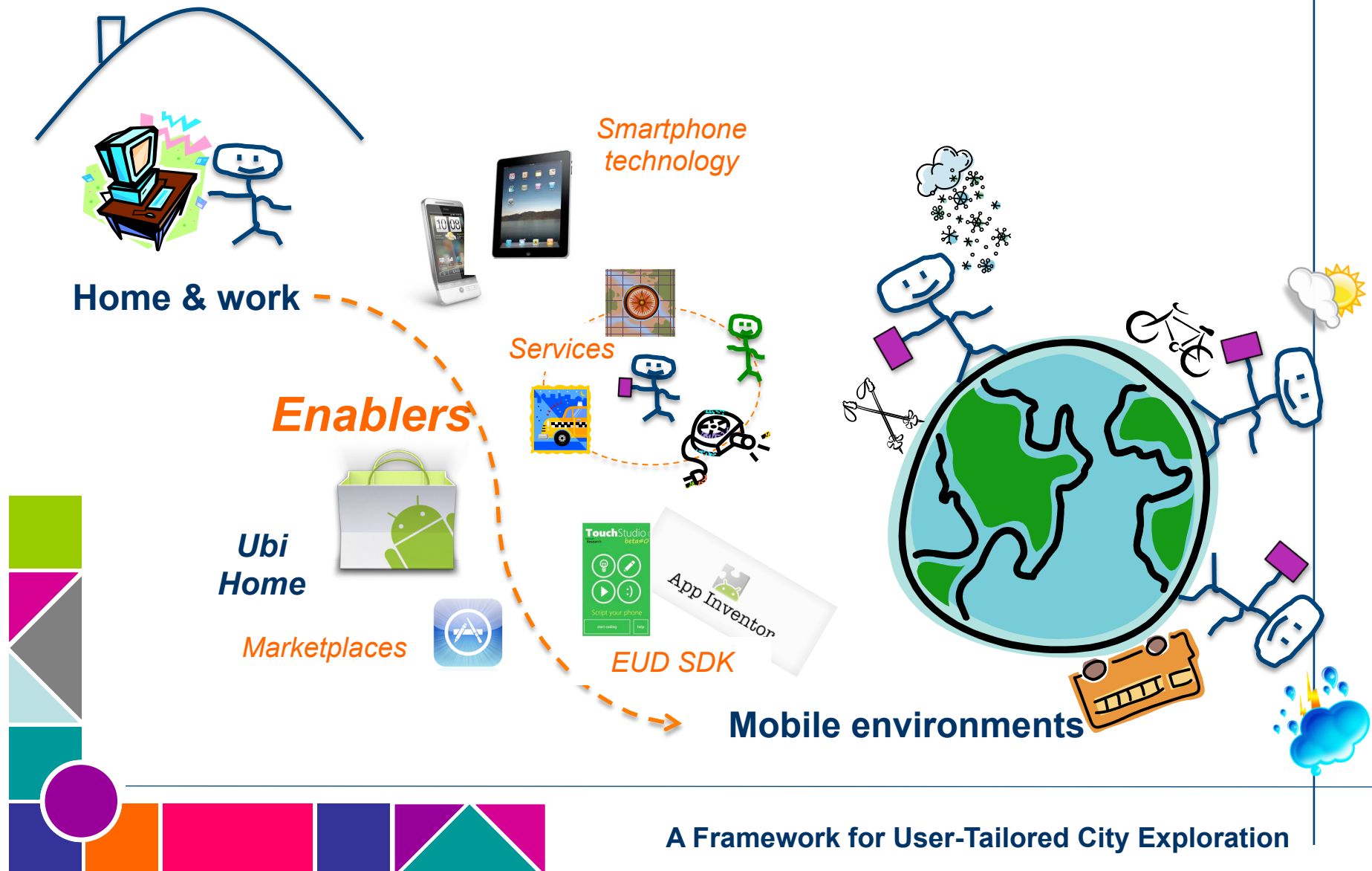
---

Jacqueline Floch  
SINTEF ICT, Norway



# EUD in mobile environments

2



# Application domains

3



Focus on the city



- + User experience
- + Recommendations from earlier research
- + Limitations of current applications
- + Application to several domains

A Framework for User-Tailored City Exploration

# Research questions

- What mobile services are relevant for City Exploration?  
How do user needs influence the configuration and composition of services?
  - Scenarios developed by us (researchers and students)
    - Novel research area, not well-understood by us
    - Novel approach, not understood by users
  - Evaluation and improvement through interviews of tourism professionals
- What mechanisms can be exploited to configure and compose the services?
  - Initial design of the City Explorer framework
    - Tailoring of basis functionality, content sharing and service composition
  - Exploratory study using a paper prototype
  - Prototype realisation (Android)



# Stakeholders

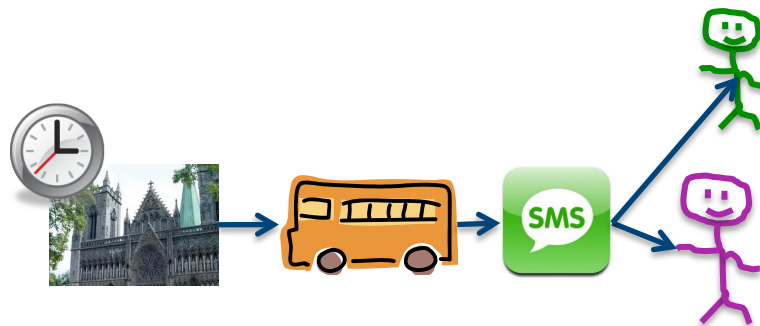
5



# Tailoring vs. service composition

6

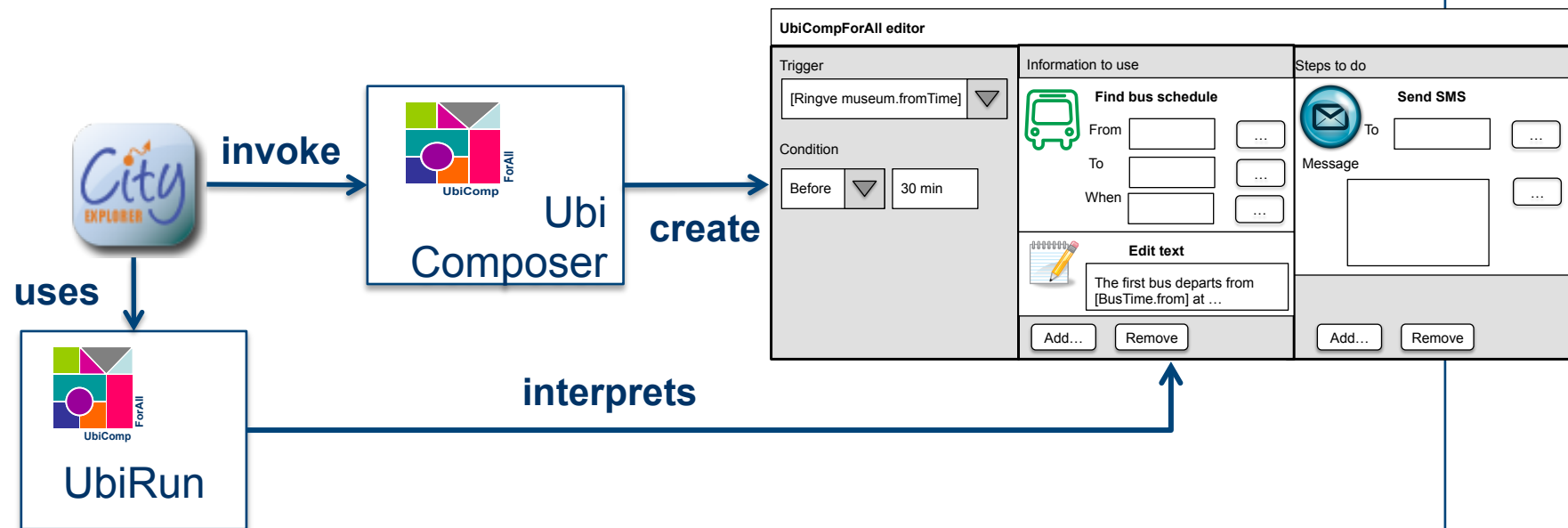
- Basic tailorable behaviour for city exploration
  - Select/create Pols and Tours with/without schedules
  - Retrieval of services associated to sites
  - Navigation support
- Service composition support
  - Context-aware triggering of atomic or composed services
  - Integration with social computing sites
  - Collaboration support, e.g. sharing positions, setting up meeting points



# Integration with generic tools

7

- City Explorer is both used for planning and exploration
  - Thus, both integrated with composition tool and composition MW
- Integration requires
  - Domain-specific and generic service building blocks, e.g. “get PoI opening hours”, “get bus time”
  - Application adaptors providing access to application data



# Status and further work

- Android prototype of City Exploration (tailoring)
  - 1<sup>st</sup> prototype available; to be uploaded on Android market
  - User experimentation this summer
- EMF-based service composition tool
  - 1<sup>st</sup> prototype planned end of July
- Follow our work at [www.ubicompforall.org](http://www.ubicompforall.org)

