

BOREALIS - E8 OG ITS SAMARBEID MELLOM NORGE OG FINLAND

Terje Moen
Seniorrådgiver
Nettverk for transportsikkerhet, 30. mars 2017

Foto: Statens vegvesen, Torgeir Vaa

Aurora / Borealis

MoU signed by the Norwegian and Finnish Director of Roads 1th of February 2016, to use the E8 road from Tromsø to Kolari as pilot for project cooperation

- Aurora: The Finnish national project
- Borealis: The Norwegian national project

The main objective for the Aurora / Borealis cooperation is to establish a Safe, Sustainable ("Green") and Intelligent highway.



Økt eksport gir transportutfordringer



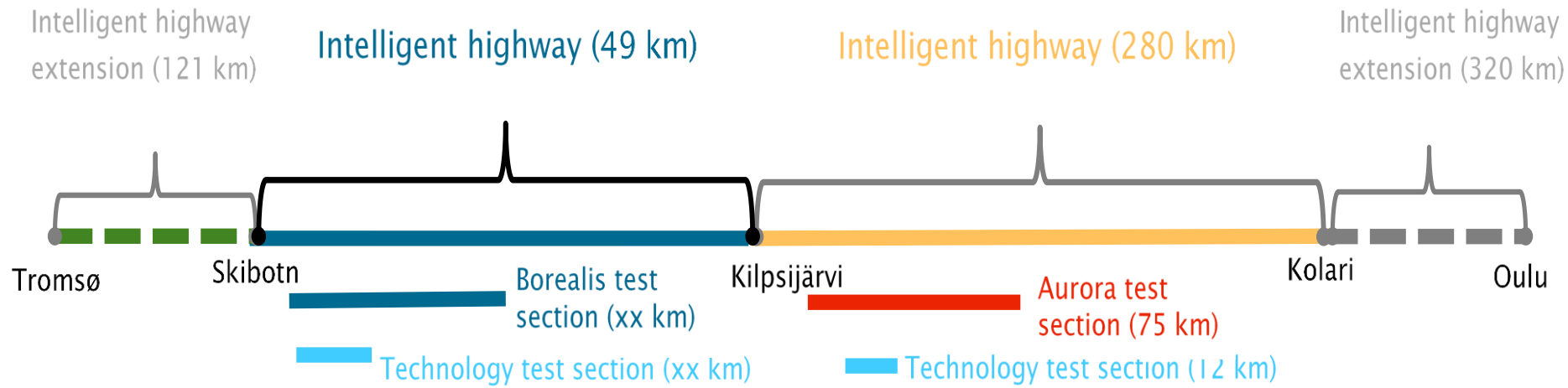
Økt vekst i produksjon og eksport av laks og ørret gir betydelig press på enkelte veg- og ferjestrekninger. Det kan ha stor betydning for veginvisteringene våre.

E8, viktig veg for blant annet norsk laksetransport fra Nord-Norge til Europa

- Næringen må ha forutsigbar transportkvalitet
- E8 er en lavtrafikert veg med mange utfordringer
- Må finne for eksempel finne kostnadseffektive løsninger for å bedre overvåkning for blant annet å kunne forutsi fremkommelighet.
- Stort fokus på sikkerhet og klima/miljø

ITS effort levels

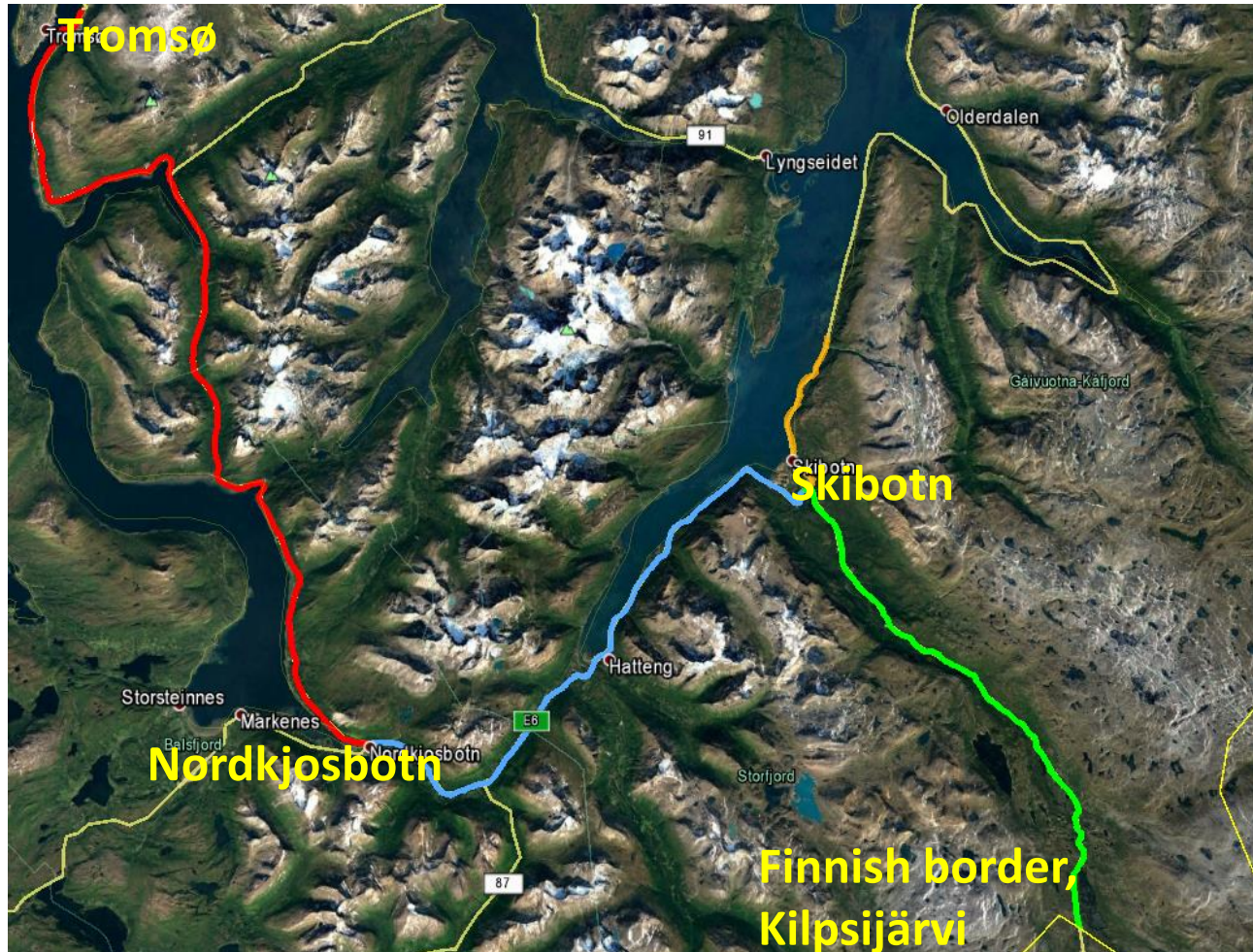
- The entire stretch Tromsø - Kolari be established as an "Intelligent Highway" (level 1).
- A shorter distance on either side of the border will have the status of test section (level 2)
- of which an even shorter distance will be used for technology testing (level 3).



E8 from Tromsø to the Finnish border

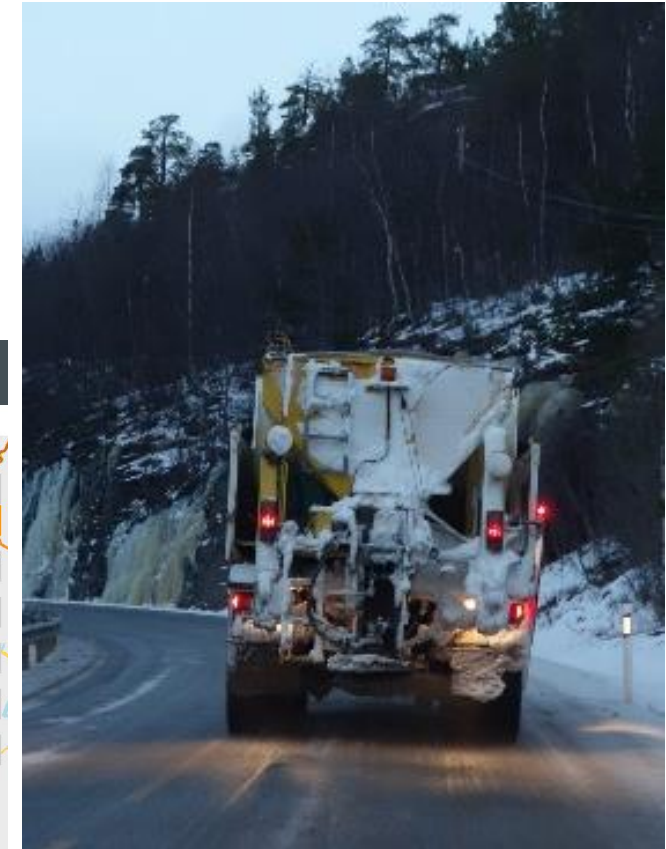
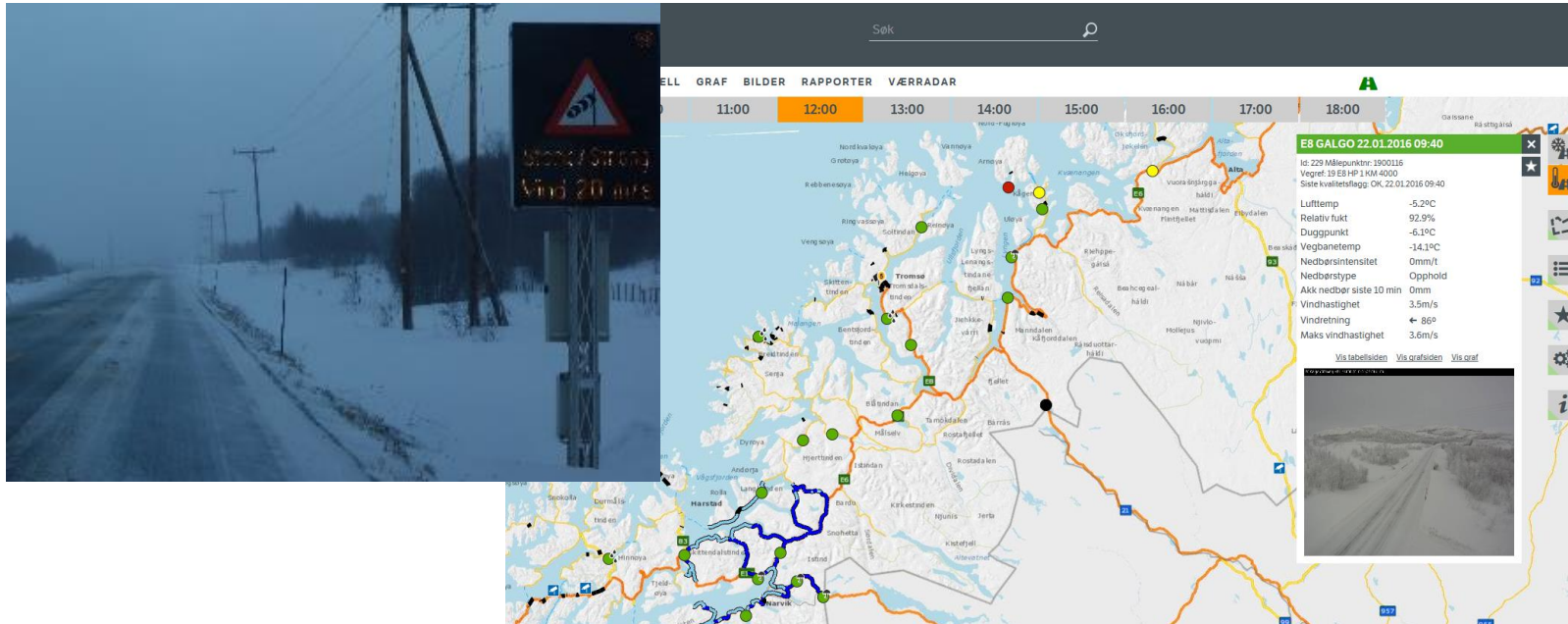
Challenges:

- Steep hills
- Rein deer crossing
- Driving conditions during the wintertime
- Poor cellular network coverage (2G/Edge)
- No accurate GPS service
- Limited monitoring from the NPRA

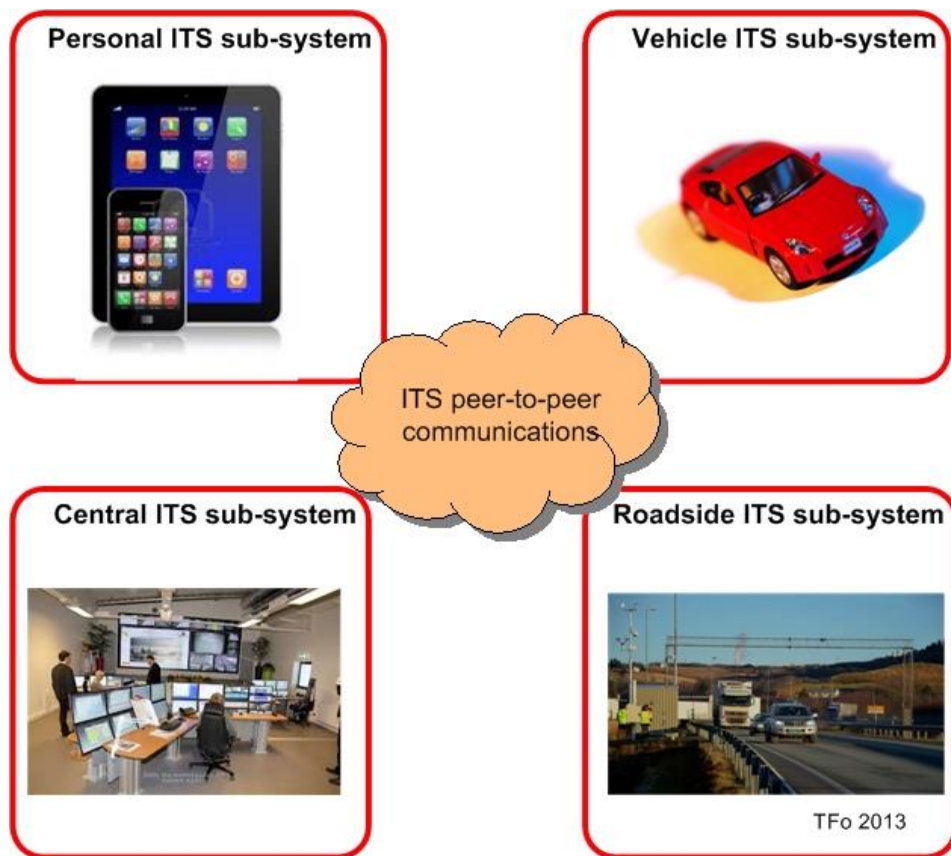


Equipment of today

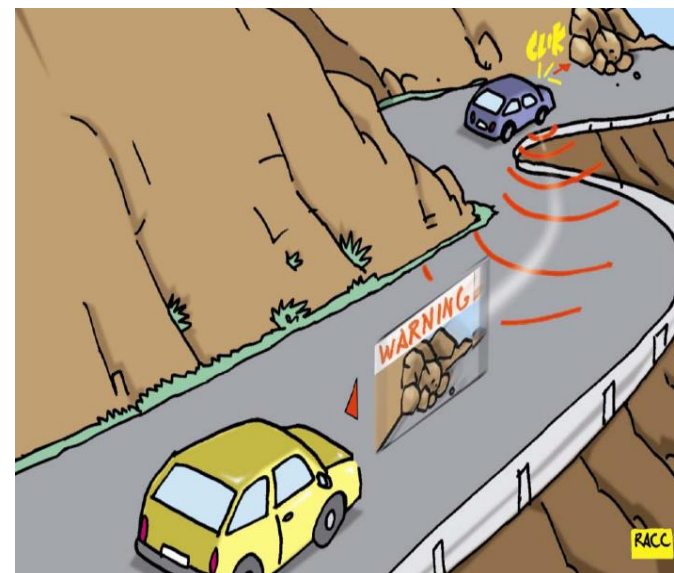
- Weather stations, camera and so on are equipment of today, with known cost.
- Upgrading today's solution on E8, extra equipment, will give more data to collect and more data to share



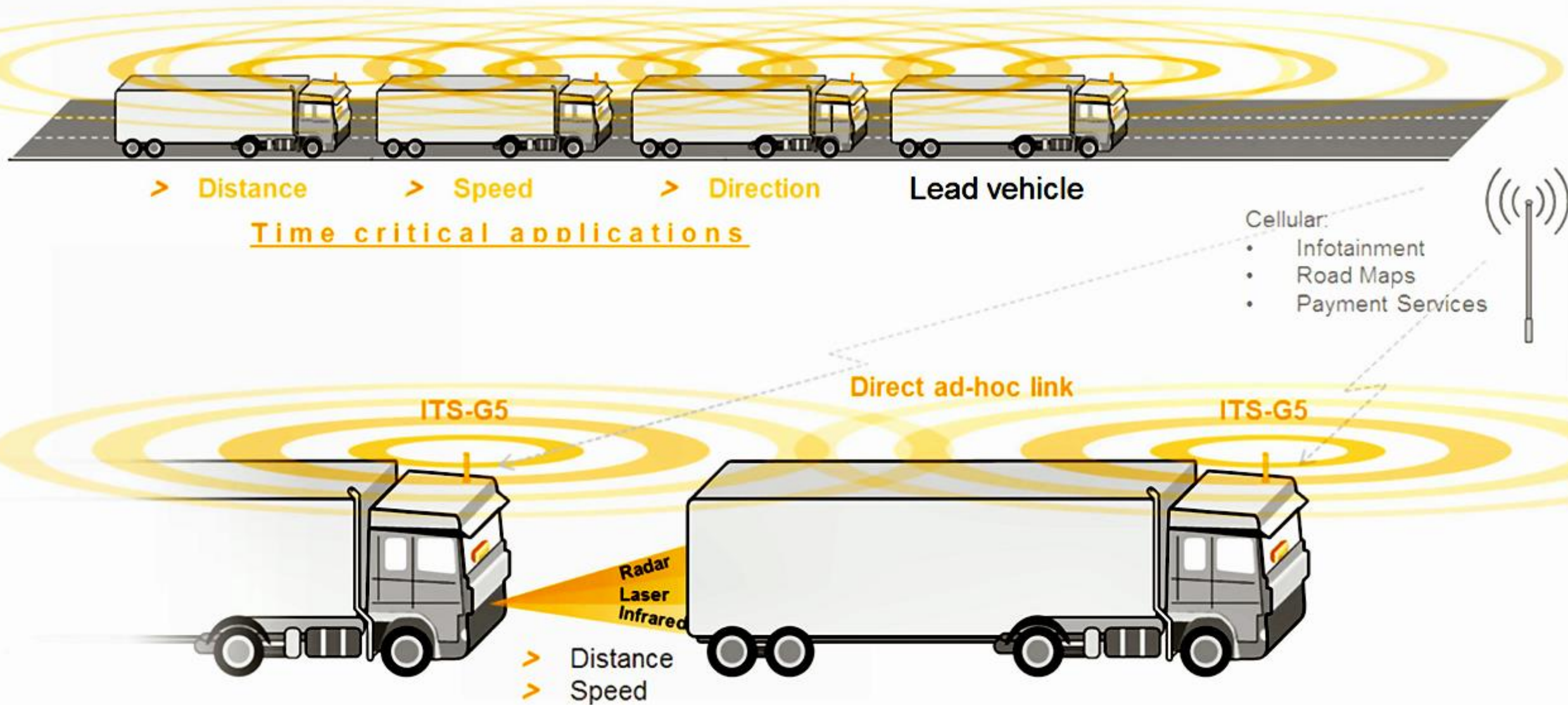
Cooperative Intelligent Transport System (C-ITS)



The ITS station architecture is based on the reference model developed by the European Telecommunication Standards Institute defined in ETSI EN 302 665.



Platooning Graphics



Some challenges related to Snowmatic driving

- Snow in the air
- Snow on the road
- Snow cakes up on the vehicle
- Icy road
- Salt clouds up sensors
- Dew an ice inside vehicle





Teknologi for et bedre samfunn