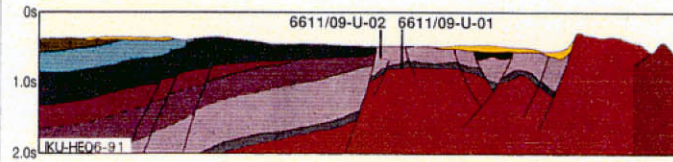
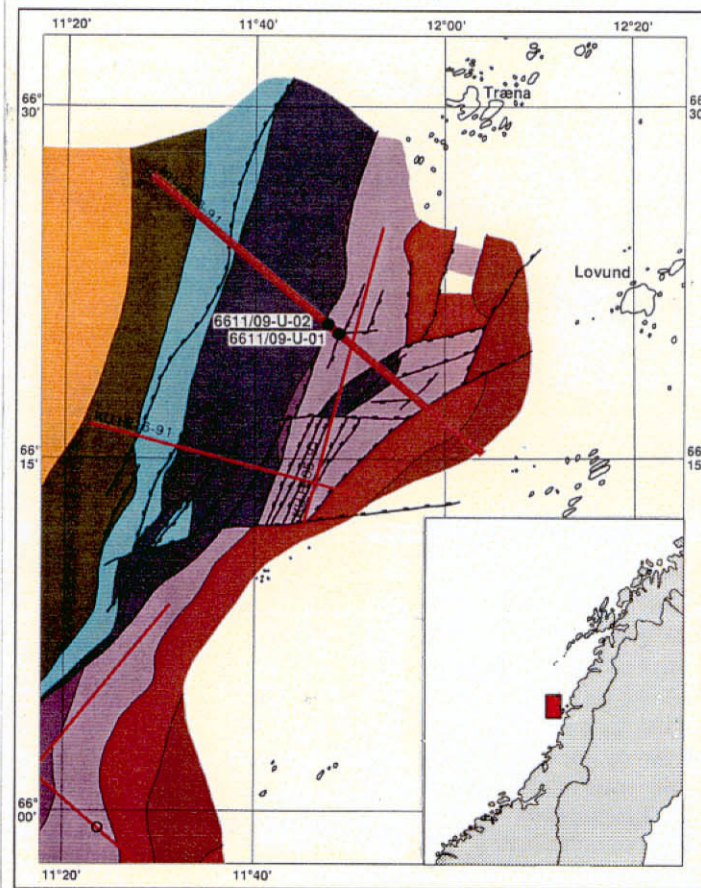


## Shallow Drilling Helgeland 1992

The objective of this project has been to investigate the Permian/Lower Triassic succession on the mid Norwegian Shelf. In 1991, a regional prestudy was carried out, in which 750 km of high resolution multichannel seismic was shot (see Information Sheet no: 14). This formed the basis for the identification of locations for shallow stratigraphic drilling.

In 1992, two stratigraphic drillings were carried out on the eastern margin of the Helgeland Basin. The two cores have a stratigraphic overlap, and the drilling provided 800 m of continuous core in the Permian/Lower Triassic. Core recovery was as high as 99%. Both holes were logged with gamma, density, porosity, sonic, dipmeter and caliper tools.

The data from this project is valuable for evaluating the hydrocarbon potential of the Permian/Lower Triassic on the mid Norwegian Continental Shelf.



*The two cores were drilled 560 m and 280 m below sea-bed and cover the lowermost 800 m of the Permian/Lower Triassic succession.*

**Corehole key data of project 23.1684.00: Shallow Drilling Helgeland 1992**

Core no.	Coordinates	Water depth	Quaternary overburden	Core length	Core recovery	Total penetration below seabed
6611/09-U-01	66°20'24.89"N 11°48'46.59"E	352 m	9.5 m	541.36 m	98.6%	558.42 m
6611/09-U-02	66°20'49.85"N 11°47'32.97"E	355 m	7.5 m	270.80 m	99.2%	280.45 m
				Tot. 812.16 m	Av. 98.8%	

**Participants**

Agip, Enterprise, Esso, Hydro, Mobil, Phillips, Statoil

**Total budget**

NOK 19.8 million

**Late participant cost**

NOK 3.970 million.

Purchase of the project report "Shallow seismic Helgeland 1991" (NOK 0.84 million) is a prerequisite.

**Data**

812 m of core (822 m of bedrock penetration)

Downhole petrophysical logs (gamma, density, neutron porosity, sonic, dipmeter and caliper).



**IKU Petroleumsforskning a.s**  
**IKU Petroleum Research**

N-7034 Trondheim, Norway • Phone: + 47 73 59 11 00  
Fax: + 47 73 59 11 02 (aut.) • Telex: 55 434 iku n