

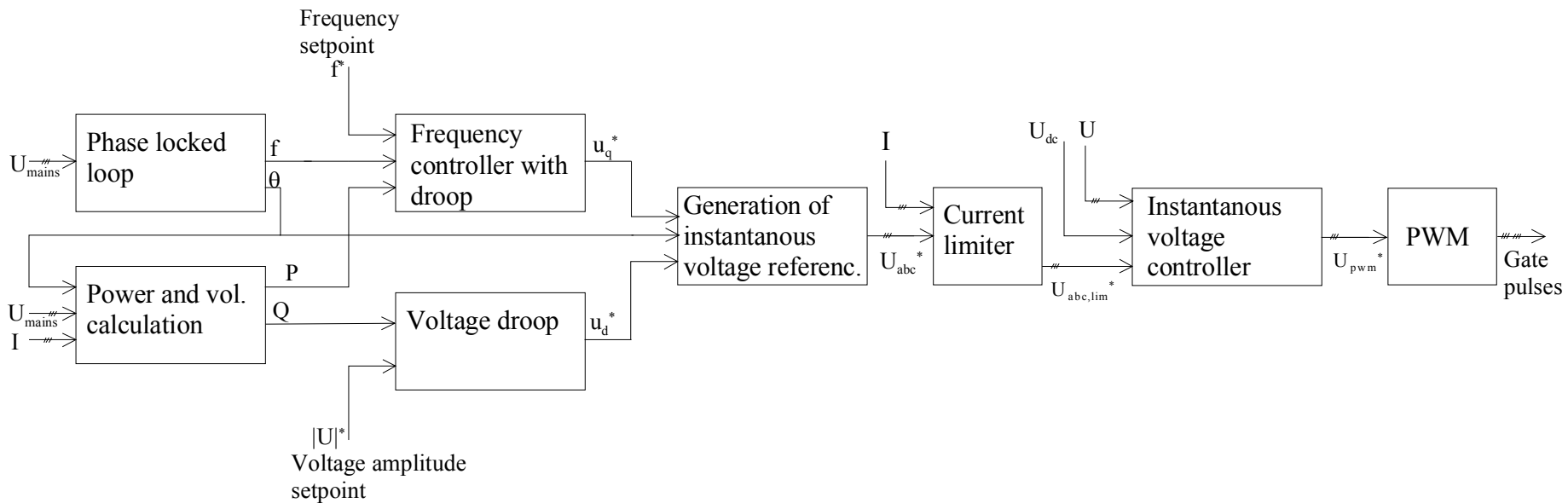
Project memo AN 02.12.24

Description of a voltage control system for an active front-end converter

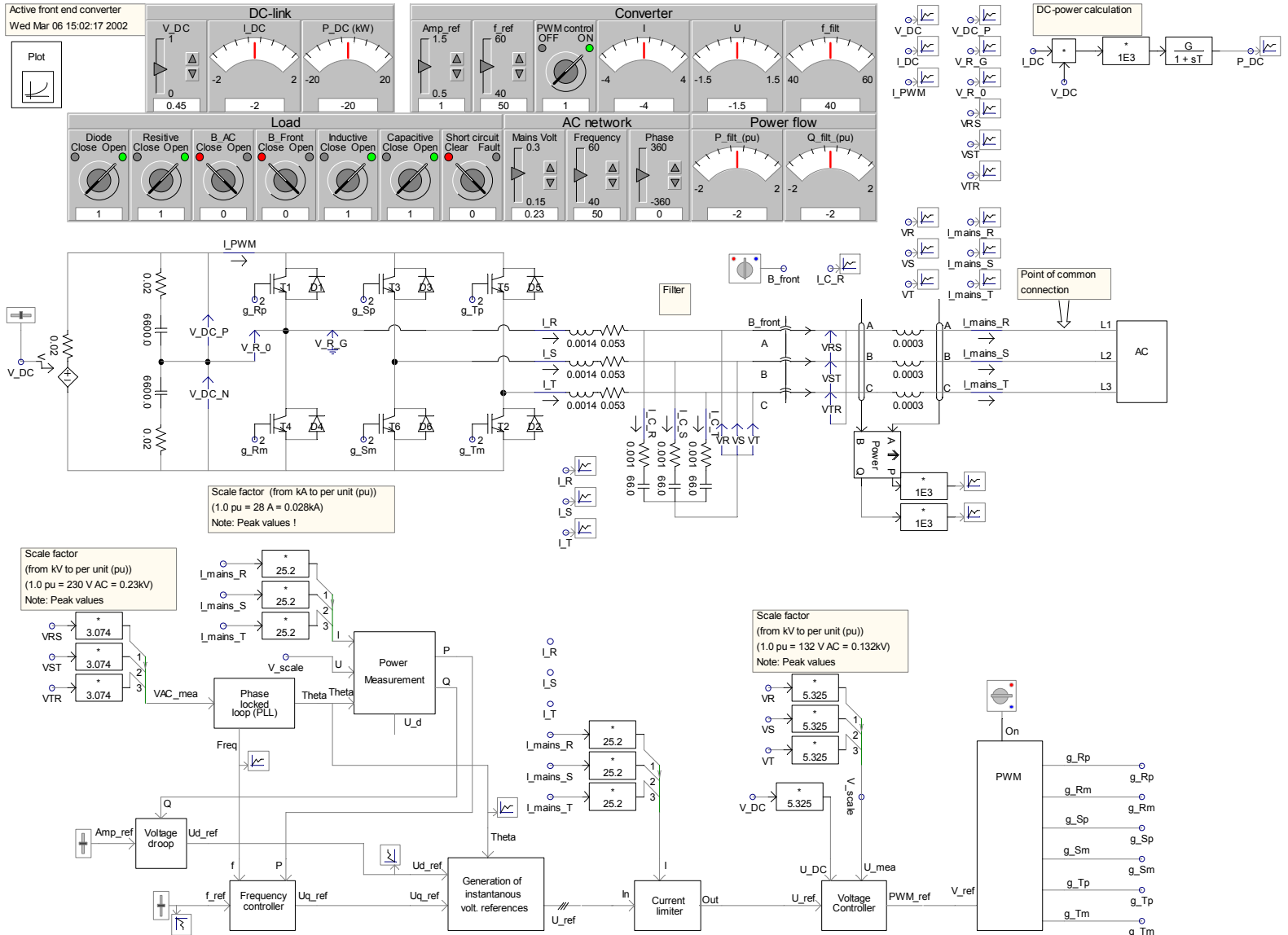
Objectives

- Modify active front-end controller from current control to voltage control suitable for stand-alone applications
- Test controller behaviour in the PSCAD/EMTDC simulation tool
- Implement and test outer control loops for active and reactive power flow control in order to allow parallel connection of sources

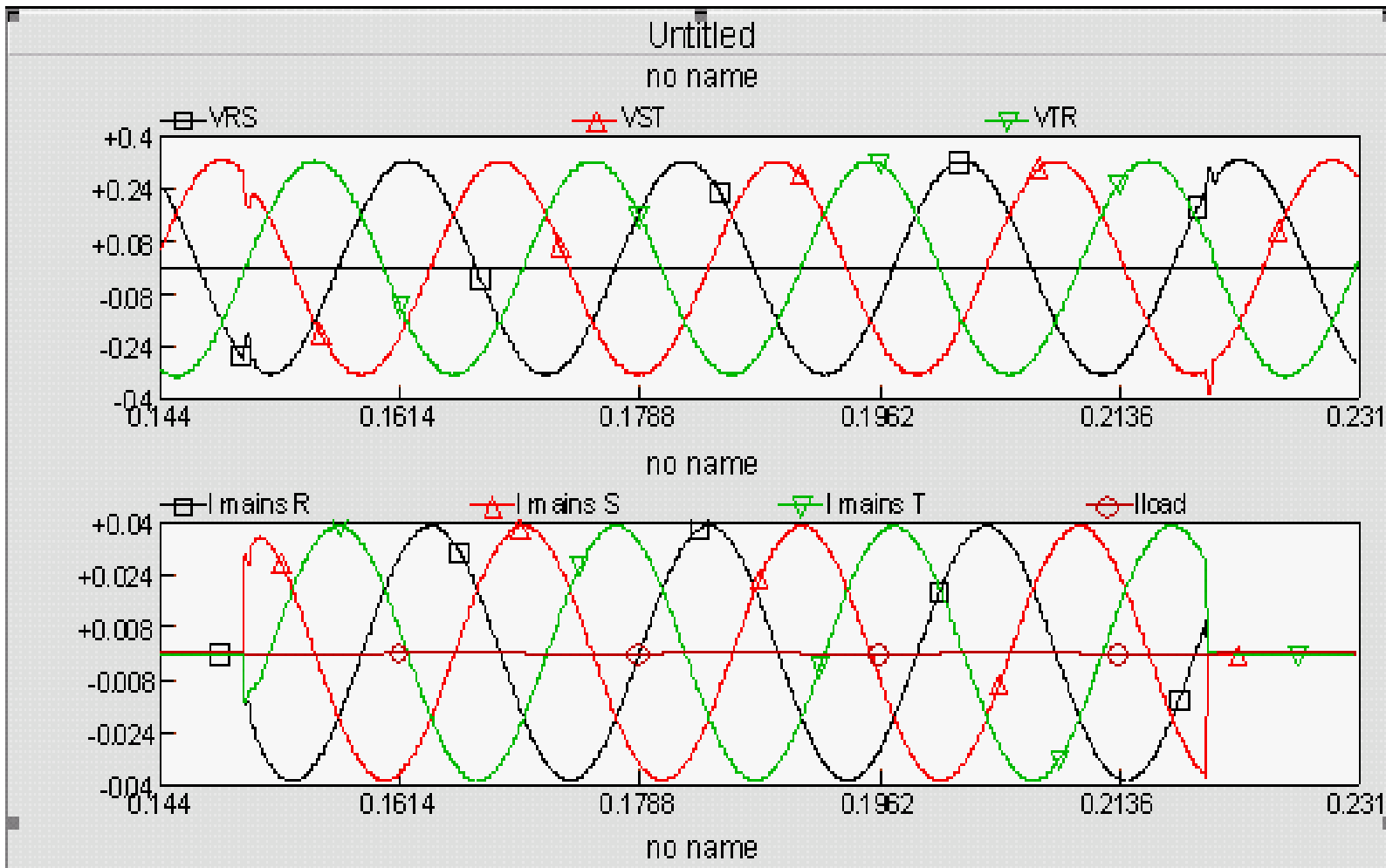
Controller block diagram



Simulation model (top level)



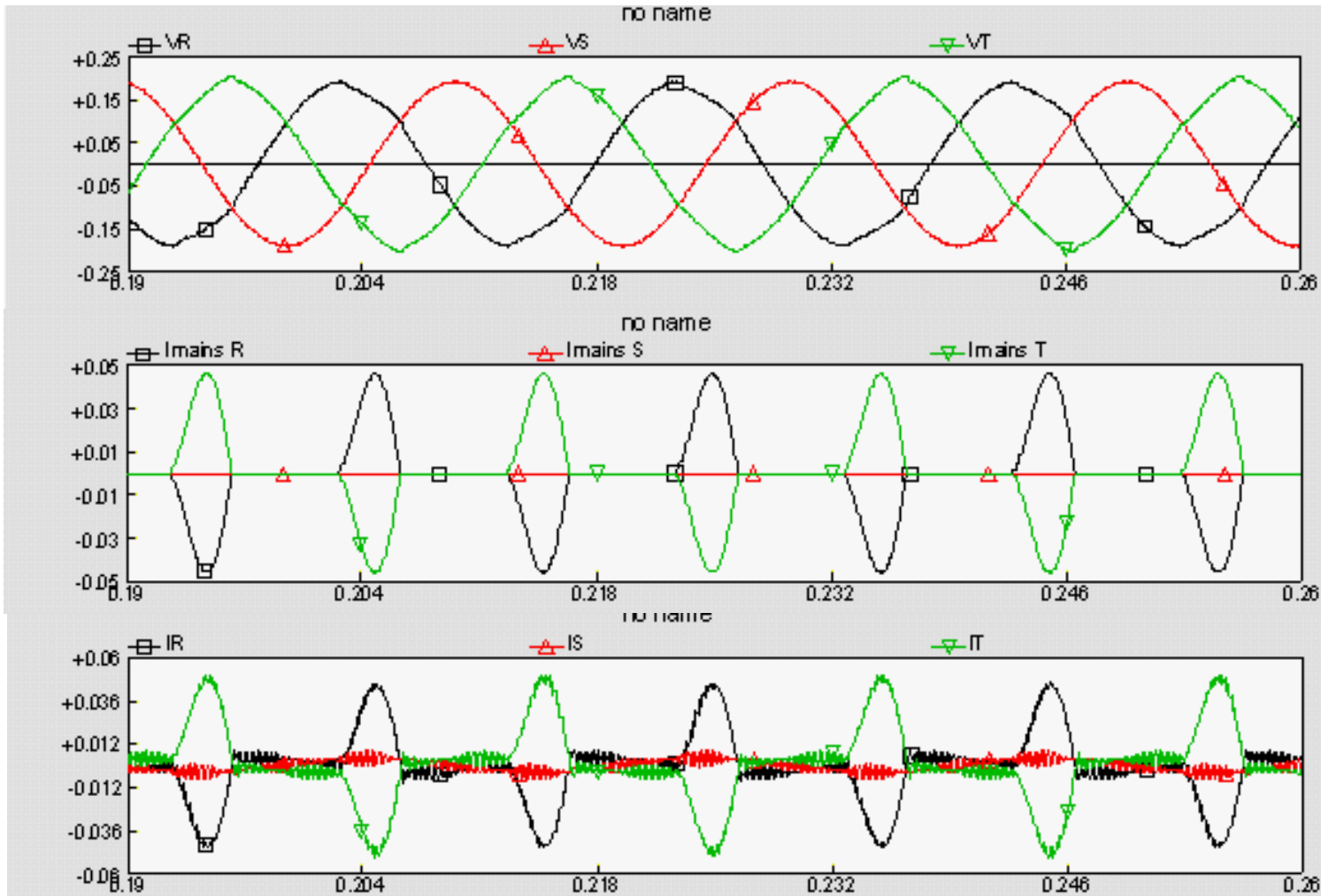
Stand alone operation: Connection/ disconnection of rated resistive load



Convert.
output
voltage
(kV)

Load
current
(kA)

Stand alone operation: Non-linear, non-symmetrical load

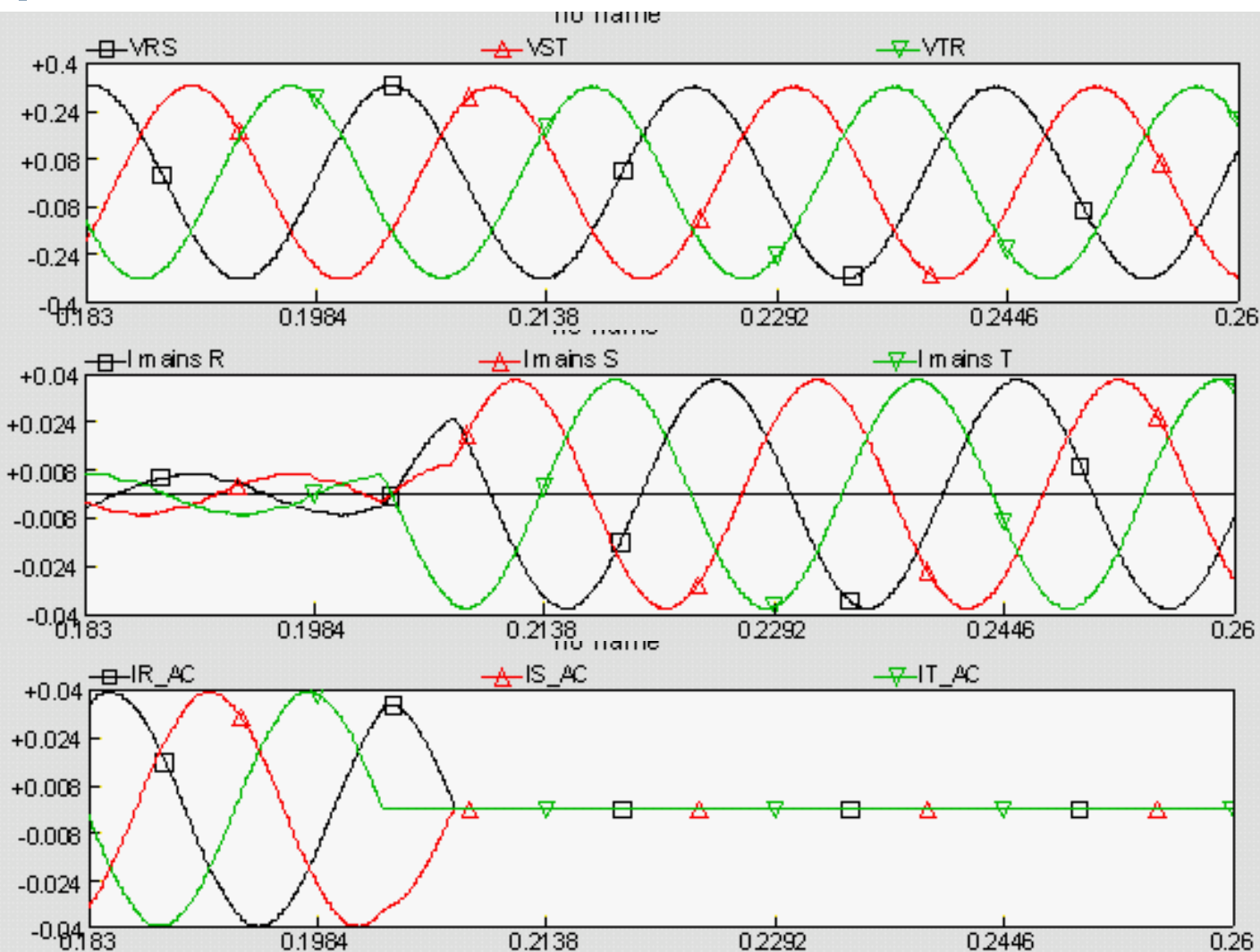


Convert.
output
voltage
(kV)

Load
current
(kA)

Convert.
current
(kA)

From grid connected to stand-alone (loss of AC network, resistive load)

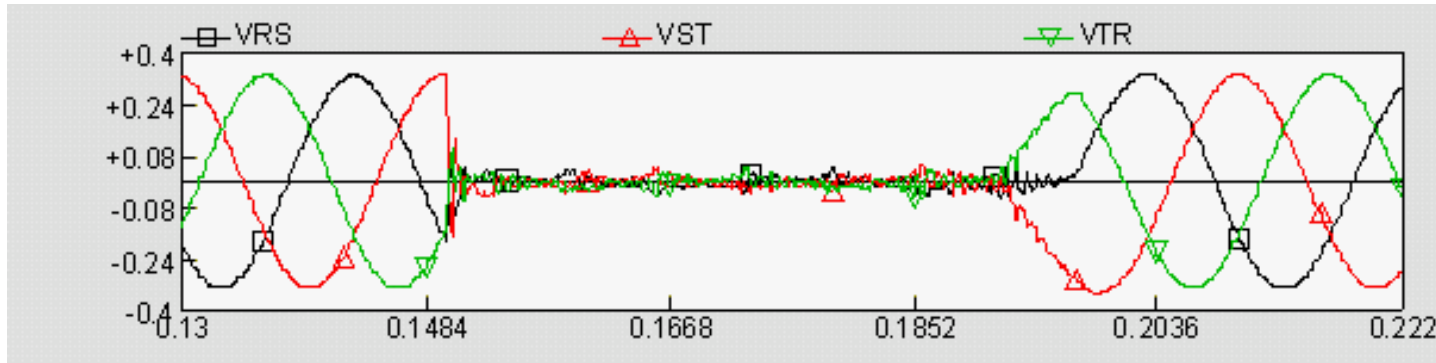


**Converter
output
voltage
(kV)**

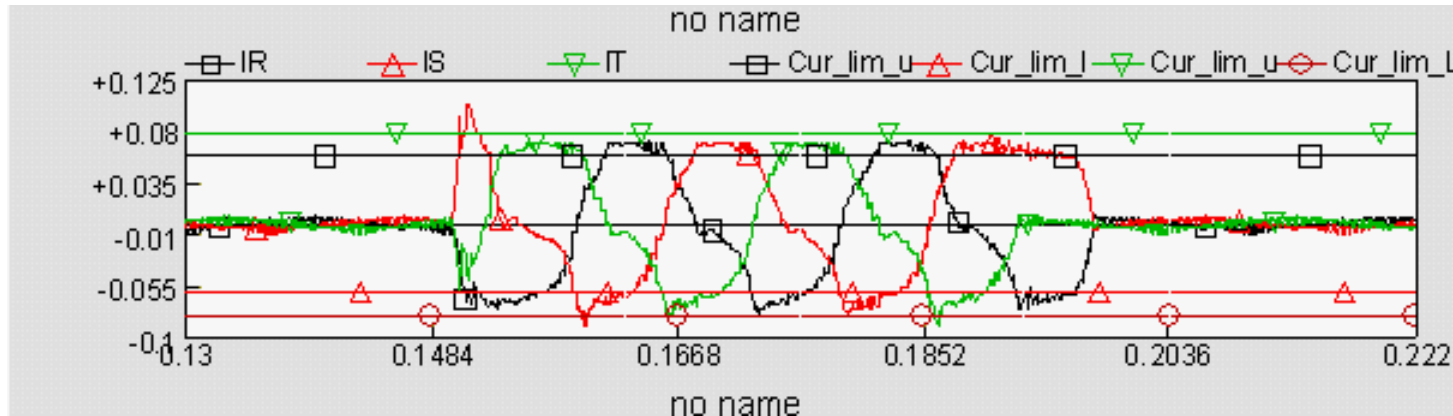
**Current
supplied
from
converter to
load
(kA)**

**Current
supplied
from AC-
grid to load
(kA)**

Three phase terminal short circuit (Illustration of current limiter)

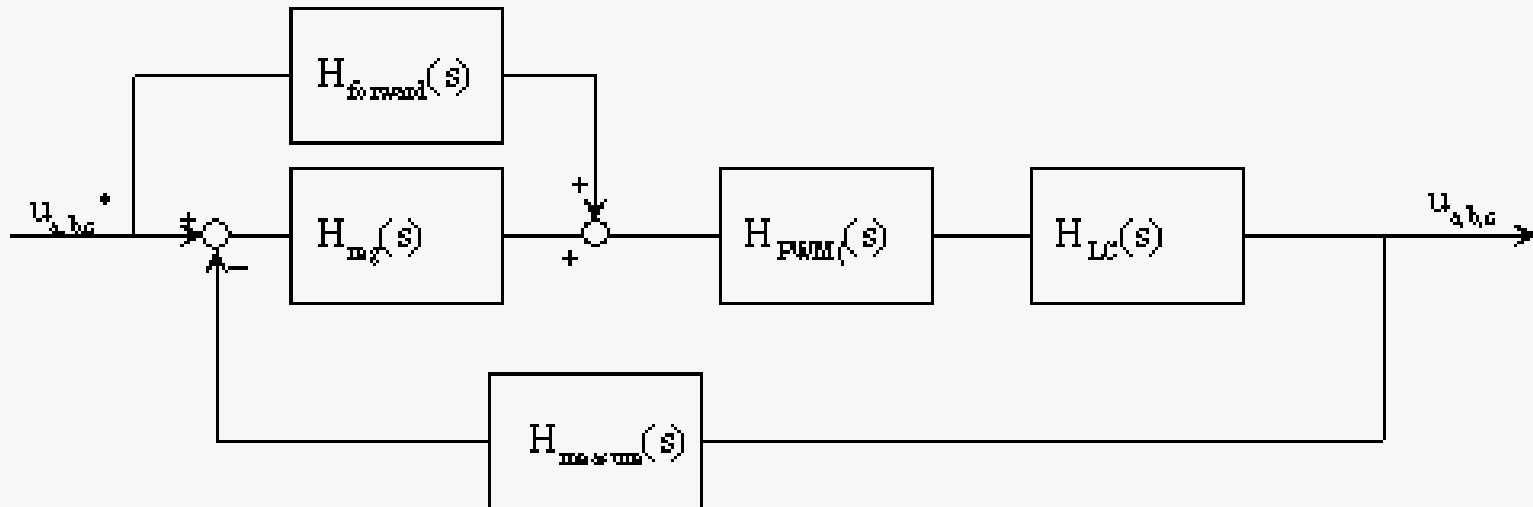


**Converter
output
voltage
(kV)**



**Converter
output
current
(before
filtering)
(kA)**

Stability analysis of inner voltage control loop



Stability analysis of inner voltage control loop (Mathcad)

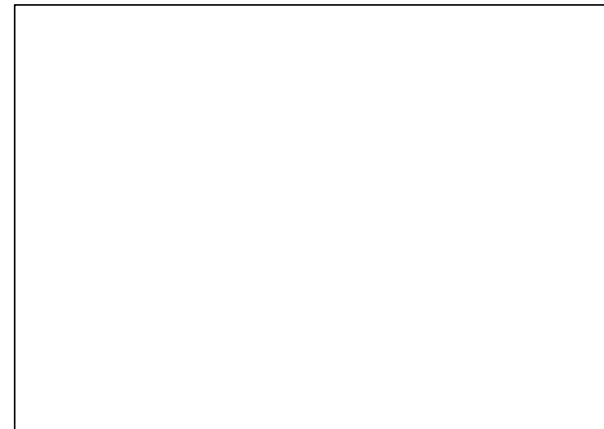
Bodediagram

Amplitude (dB)
 $\text{dB}(h_0, f)$
 $\text{dB}(N, f)$
 $\text{dB}(M, f)$



Frequency (Hz) f_c

Phase angle (degree)
- 180
 $\text{phase}(h_0, f)$
 $\text{phase}(M, f)$
 Phase_c



Frequency (Hz) f_c

Proposals for further investigation

- Optimisation of control loops and control parameters
- Alternative methods for active and reactive power flow control
- Reduce interaction between current limiter and the other control loops
- Include virtual source impedance (virtual synchronous reactance as in generators)



SINTEF Energy Research

Address: NO-7465 Trondheim,
NORWAY
Reception: Sem Sælands vei 11
Telephone: +47 73 59 72 00
Telefax: +47 73 59 72 50

www.energy.sintef.no

Enterprise No.:
NO 939 350 675 MVA

PROJECT MEMO

MEMO CONCERNS

Description of a voltage control system for an active front-end converter

DISTRIBUTION

Magnar Hernes
Kjell Ljøkelsøy
Olve Mo

AN NO. AN 02 12 24	CLASSIFICATION	REVIEWED BY Magnar Hernes
ELECTRONIC FILE CODE 020304Mo8940	AUTHOR(S) Olve Mo	DATE 2002-03-04
PROJECT NO. 12X127	Olve.Mo@energy.sintef.no	NO. OF PAGES 49
DIVISION Energy Systems	LOCATION Sem Sælands Vei 11	LOCAL FAX +47 73597250

This memo is part of the result of the Strategic Institute Programme (SIP) “Power electronics and energy storage technologies for cost- and energy efficient power systems” funded by The Research Council of Norway.

The memo presents one possible way to design a control system for control of the instantaneous output voltage of an active front-end converter.

The description is based on a model that has been established in the simulation software PSCAD/EMTDC. Several simulated examples are presented. These results illustrates that the presented controller structure is working.

The inner closed control loop of the presented system is a voltage control loop. This kind of control is typical suited for converters that need to be able to feed the AC-system in stand-alone operation (for instance fuel cells, energy storage systems and other UPS-like applications). The control system is also suited for converter connected to weak power systems and for parallel operation between several converters.

The presented controller structures and their parameters are not fully optimised. Parameters are selected in order to illustrate that the presented controllers are working as intended. Optimal choices can only be decided according a specification for a specific application.

Proposal for further investigation and improvements are presented in chapter 4.

TABLE OF CONTENTS

		Page
1	SYSTEM DESCRIPTION	4
1.1	Power circuit	4
1.2	Per unit system used in the controller	4
1.3	Overview of the control system	4
1.4	The pulse-width modulation	5
1.5	The inner voltage control loop	5
1.6	The current limiter.....	6
1.7	Generation of three phase instantaneous voltage references.....	6
1.8	Frequency control with droop	7
1.9	Voltage droop.....	8
1.10	Power calculation	8
1.11	Phase locked loop.....	9
2	PSCAD/EMTDC MODEL	10
2.1	The model.....	10
2.2	The power circuit	11
2.3	Phase locked loop.....	12
2.4	Power calculation	13
2.5	Voltage droop.....	13
2.6	Frequency controller	14
2.7	Generation of instantaneous voltage reverences	14
2.8	Current limiters	15
2.9	Voltage controller.....	15
2.10	Pulse width modulation.....	16
3	PRESENTATION OF SIMULATED RESULTS	17
3.1	Response of inner voltage loop	17
3.2	Stand-alone (autonomous) operation	18
3.2.1	Resistive load	18
3.2.2	Inductive / resistive load	20
3.2.3	Non-linear, non-symmetrical load	22
3.2.4	Overload.....	23
3.2.5	Three phase short circuit.....	25
3.2.6	Two pole short circuit	27
3.3	Converter connected to AC-network	29
3.3.1	Synchronised connection to AC-network	29
3.3.2	Manuel active power flow control by adjustment of frequency set-point	30
3.3.3	Manuel reactive power flow control by use of voltage set-point.....	32
3.3.4	Connection and disconnection of resistive load.....	33
3.3.5	Transition to stand-alone operation (loss of AC-network)	35
4	PROPOSAL FOR IMPROVEMENTS AND FURTHER INVESTIGATION.....	37
4.1	Optimum parameters and structures of control loops	37
4.2	Need of phase locked loop	37
4.3	Current limiting problems	37
4.4	Power control and DC-link voltage control	37

4.5	Compensation for actual DC-link voltage.....	37
4.6	Alternative frequency control	37
4.7	Effect of control loop digital implementation.....	38
4.8	Virtual source impedance.....	38
4.9	Improvement of voltage droop.....	38
4.10	Improvement of current limiter.....	38
5	REFERENCES	39
6	APPENDIX A : PARAMETERS USED IN THE SIMUALTION MODEL.....	40
7	APPENDIX B : BODEPLOT OF INNER VOLTAGE LOOP	45