

Project memo AN 01.12.97

Updated simulation model of active front end converter

Objectives

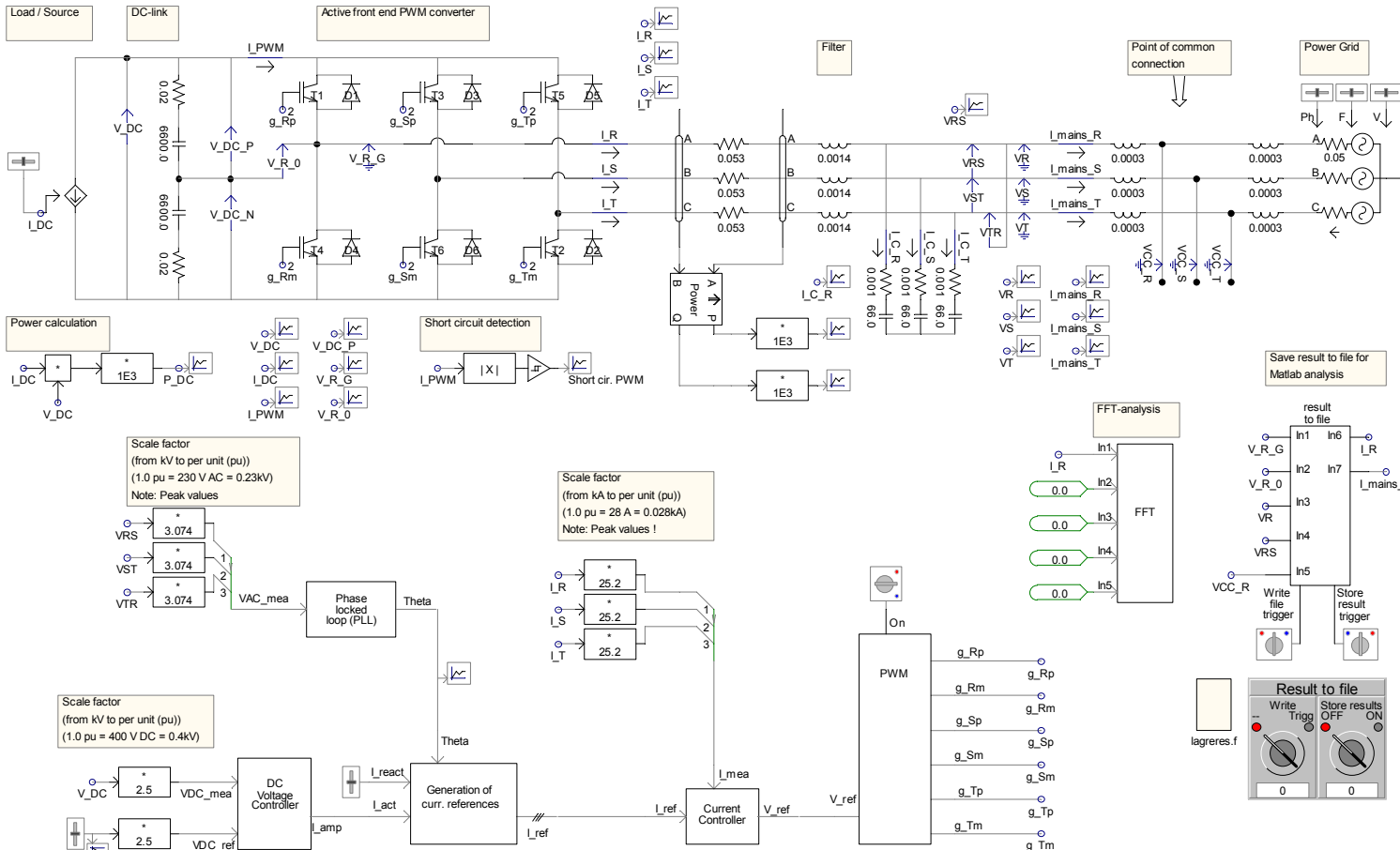
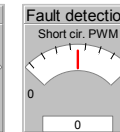
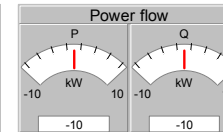
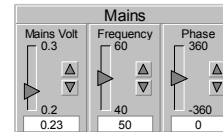
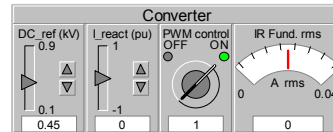
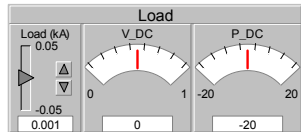
- Implement a complete dynamic model of an active front-end converter (grid connected voltage source PWM converter)
- The model is to be implemented in the simulation software PSCAD/EMTDC
- Illustrate how Mathcad can be used for stability analysis of converter controller
- Illustrate how Matlab can be used for harmonic analysis

Active front-end characteristics

- Active and reactive power flow can be controlled in both directions and independently.
- Possibility for sinusoidal current drawn from, or delivered to, the power grid
- Small filter requirements compared to traditional thyristor converters
- The DC-link voltage level can be controlled
- Can be used as the only power source in an AC network (stand-alone application)
- Can inject currents to compensate for non-linear loads or for transients (e.g. operating as an active filter)
- Very short response time (step changes in active / reactive power and current in less than a ms)

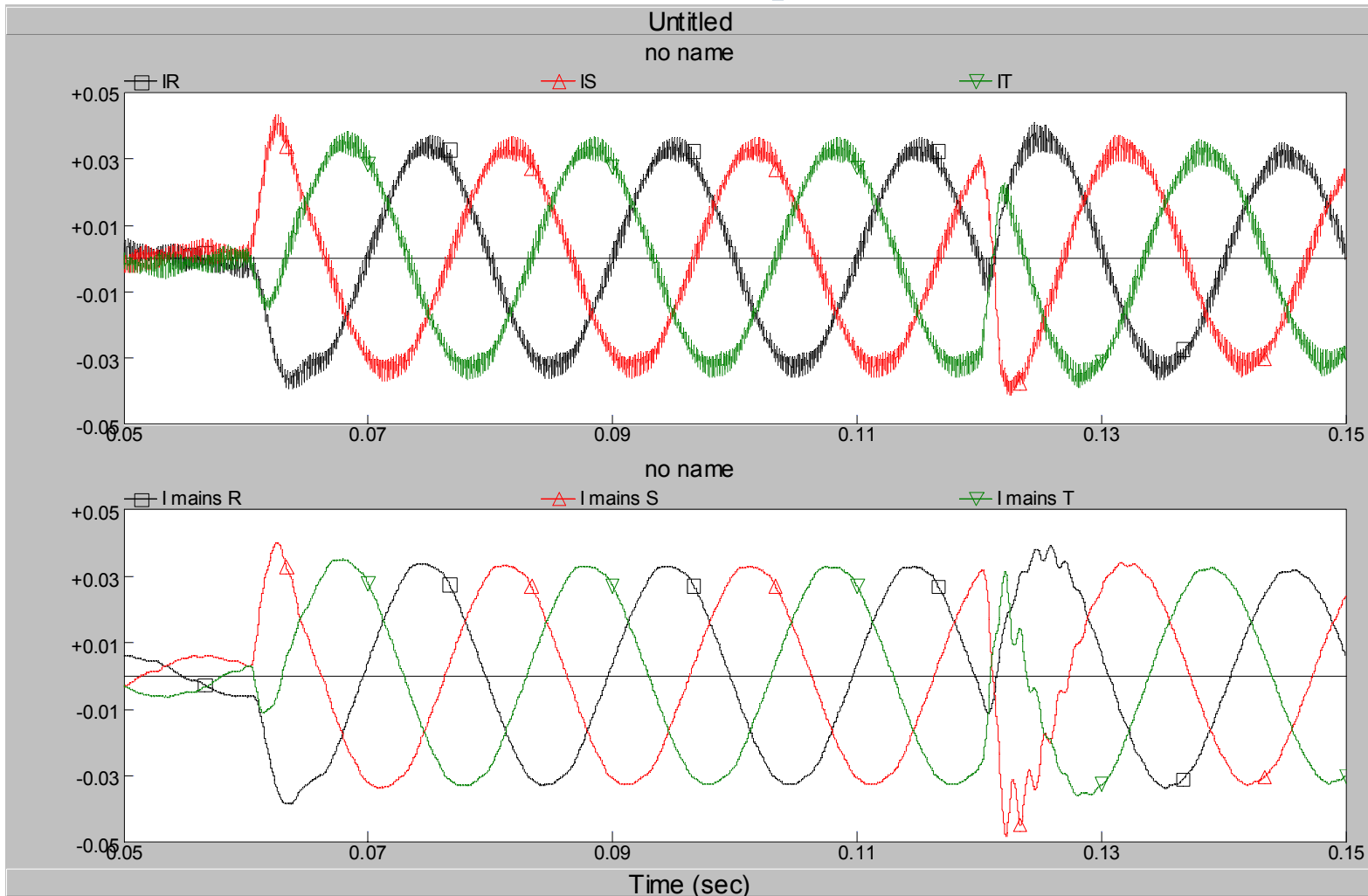
Simulation model (top level)

Active front end converter
Wed Dec 12 09:13:34 2001



File ny_frontend_11
Dir J:\DOK\12\MD\Projekt\Sip_12X127\EMTDC\Frontend

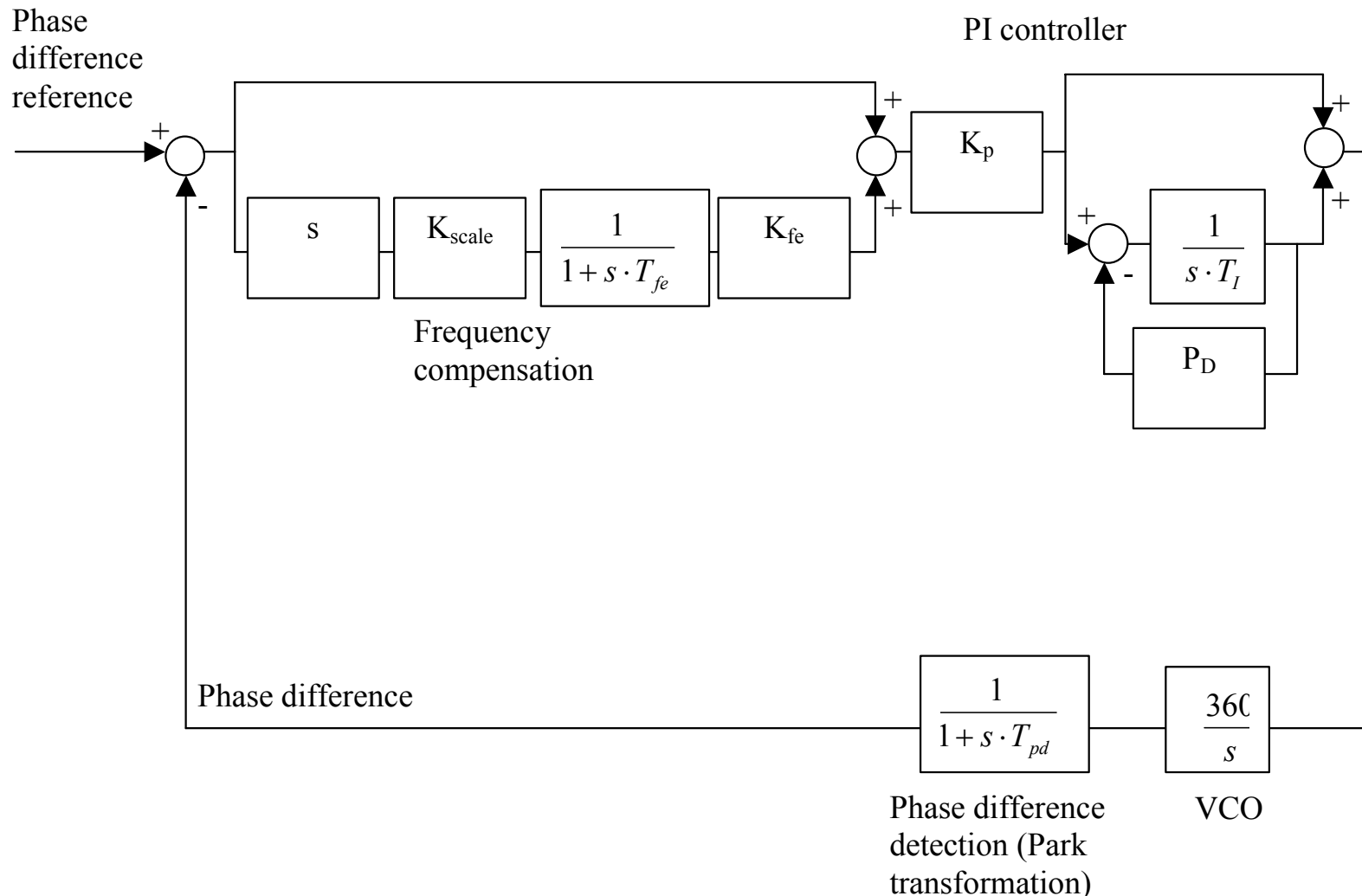
Example: Step reversal of reactive current/power flow



**Convert.
currents
before
filtering**

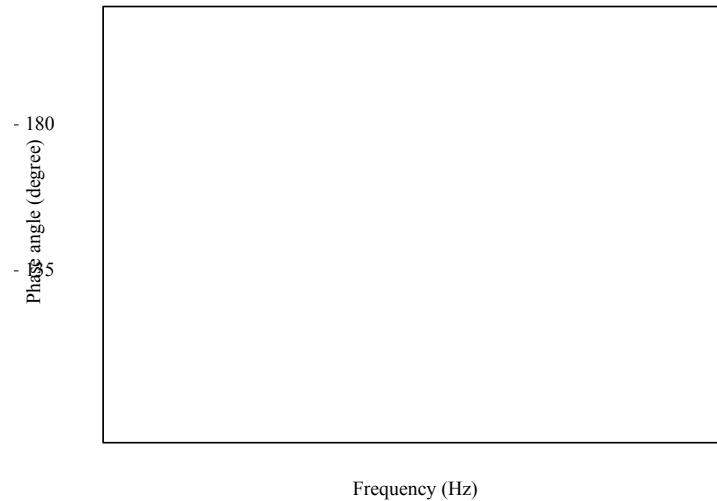
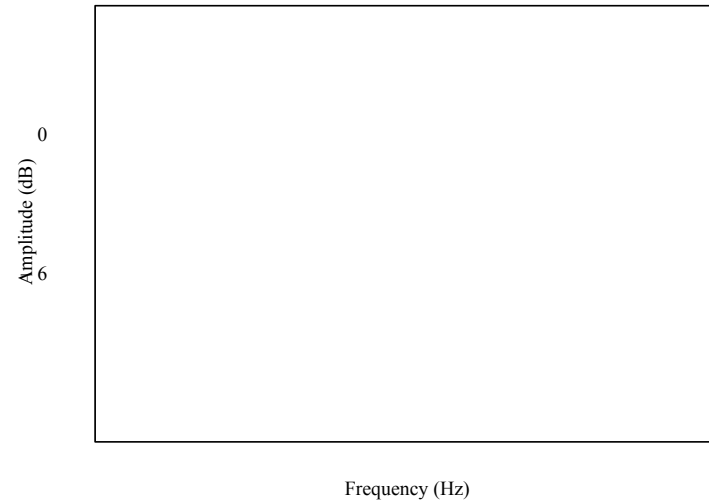
**Convert.
currents
after
filtering**

Stability analysis: Phase locked loop

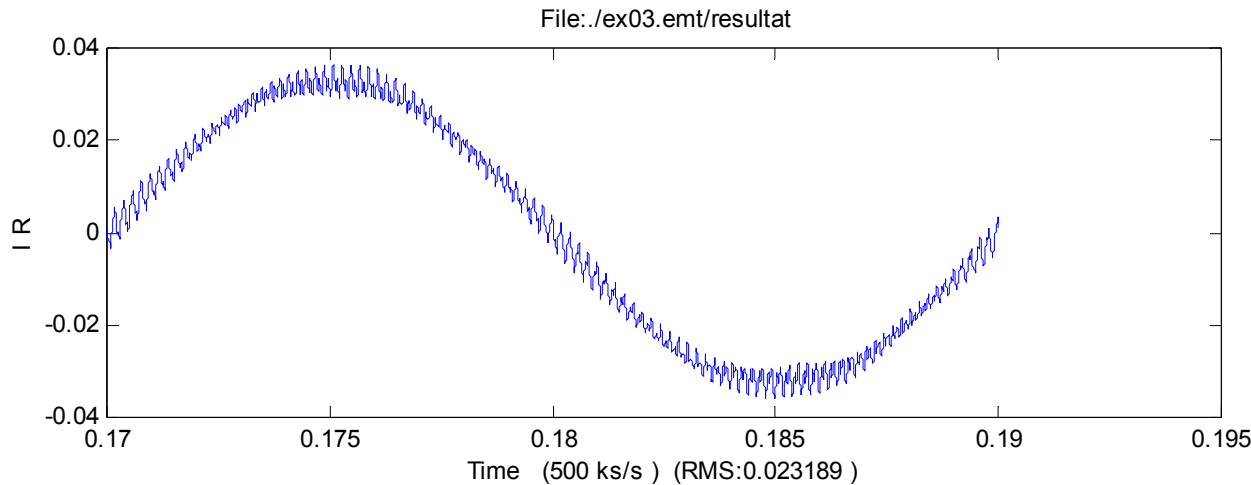


Stability analysis of the phase locked loop (Mathcad)

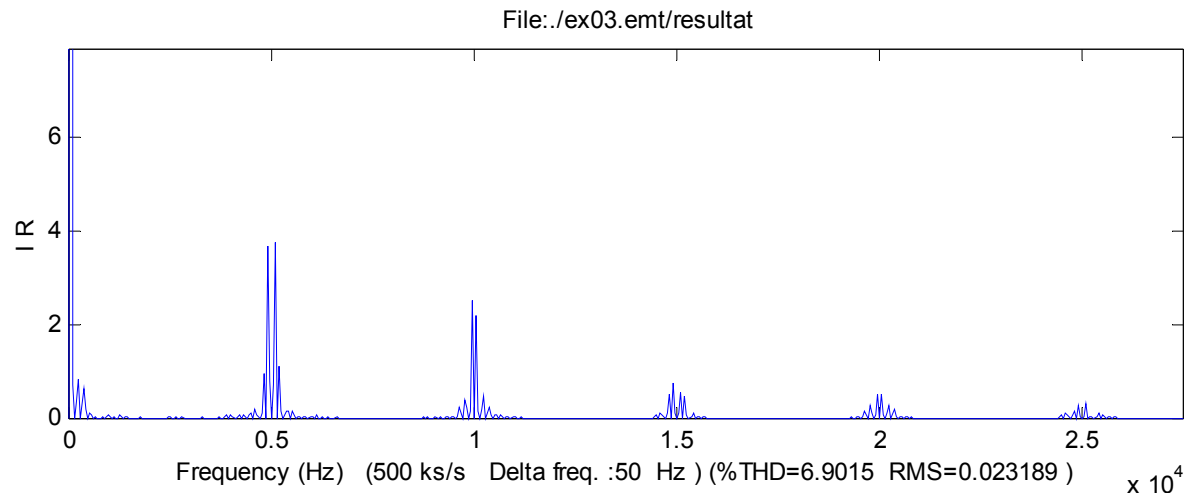
Bodediagram



Example: Harmonic content in converter current (Matlab)



Current in
filter
inductor



Harmonics
in % of
fundamental

$\times 10^4$ Hz on
x-axis

Conclusions

- SINTEF Energy Research now have models and analysis tools well suited for design and verification of active front-end converters.
- The established model and the analysis tools (PSCAD/EMTDC) are well suited for further investigation on problems related to interfacing of alternative energy sources and energy storage devices to the power grid or to an autonomous power system.



SINTEF Energy Research

Address: NO-7465 Trondheim,
NORWAY
Reception: Sem Sælands vei 11
Telephone: +47 73 59 72 00
Telefax: +47 73 59 72 50

http://www.energy.sintef.no

Enterprise No.:
NO 939 350 675 MVA

PROJECT MEMO

MEMO CONCERNS

Updated simulation model of active front end converter

DISTRIBUTION

Magnar Hernes (SEfAS)
Kjell Ljøkelsøy (SEfAS)
Nils Arild Ringheim (SEfAS)
Olve Mo (SEfAS)

AN NO. AN011297	CLASSIFICATION Unrestricted	REVIEWED BY Magnar Hernes
ELECTRONIC FILE CODE 011123Mo145023	AUTHOR(S) Olve Mo	DATE 2001-11-23
PROJECT NO. 12X127	Olve.Mo@energy.sintef.no	NO. OF PAGES 64
DIVISION Energy Systems	LOCATION Sem Sælands Vei 11	LOCAL FAX +47 73597250

SUMMARY

This memo is a continuation and systematisation of previous work on mains integrated converters. It is a part of the result of the Strategic Institute Programme (SIP) "Power electronics and energy storage technologies for cost- and energy efficient power systems" funded by The Research Council of Norway.

A complete dynamic model of an active front-end converter is presented in this memo. The model is implemented in the PSCAD/EMTDC simulation software and includes both the power circuit and the control loops.

The memo also shows how MatLab can be used for calculation of harmonics and how MatCad can be used for investigation of converter stability analysis and also for determination of possible AC-filter resonance frequencies. The simulation examples clearly show that the filter design is a very important part of an active front-end converter.

The memo shows that SINTEF Energy Research now have models and analysis tools well suited for design and verification of active front-end converters. The established model and the analysis tools are also well suited for further investigation on problems related to interfacing of alternative energy sources and energy storage devices to the power grid or to an autonomous power system.

Further work will be:

- Define and describe design criteria for the controllers of the active front-end converter in different power system applications.
- Thorough investigation of AC-filter design for active front-end converters.

TABLE OF CONTENTS

		Page
SUMMARY		1
1	INTRODUCTION.....	3
1.1	Active front-end converter	3
1.2	About this memo	3
2	MODELLING	4
2.1	The model (file: ny_frontend_11.psc).....	4
2.2	The power circuit	6
2.2.1	Power grid	6
2.2.2	Converter filter and power meter.....	7
2.2.3	The converter.....	7
2.3	Controller loops.....	8
2.3.1	The DC-voltage controller.....	9
2.3.2	The phase locked loop (PLL)	10
2.3.3	Generation of three phase current references	11
2.3.4	Current controller	13
2.3.5	Pulse width modulation (PWM) of gate pulses	14
2.4	Online result analysis (FFT).....	16
2.5	Saving results for analysis in Matlab.....	16
2.6	Parameters for the simulation model.....	17
3	FREQUENCY ANALYSIS OF THE SELECTED FILTER PARAMETERS	18
4	STABILITY ANALYSIS OF THE PHASE LOCKED LOOP	19
4.1	Method of analysis	19
4.2	Block diagram and Bode plot.....	19
4.3	Conclusions regarding stability of the phase locked loop	21
5	EXAMPLES OF SIMULATION RESULTS	22
5.1	DC – voltage controller operation (file: ex01.psc)	22
5.2	Current reference generation and current controller operation (file: ex01.psc).....	22
5.3	PWM (file: ex01.psc).....	25
5.4	AC-side waveforms (file: ex01.psc).....	26
5.5	Phase – locked loop operation (file: ex02.psc).....	28
6	FREQUENCY COMPONENTS IN CONVERTER OUTPUT VOLTAGES AND CURRENTS	30
6.1	Method of analysis	30
6.2	Harmonics to be expected	30
6.3	Illustration of harmonic analysis using MatLab for post processing (file: ex04.psc).....	30
6.4	Converter operating in over-modulation	33
7	INVESTIGATION OF RESONANCE EXPERIENCED AT LABORATORY	36
7.1	Description of observed resonance.....	36
7.2	Parameters for the laboratory converter at time of measurement.....	36
7.3	Simulation of converter with parameters according to laboratory model (ex04.psc).....	37
7.4	Frequency analysis of filter and power grid for laboratory set-up	37
7.5	Consequences of harmonic injection from other loads.....	41
7.6	Concluding remarks on laboratory set-up simulation.....	44
8	REFERENCES.....	45
9	APPENDIX A : PARAMETERS USED IN SIMULATION MODEL.....	46
10	APPENDIX B: FREQUENCY ANALYSIS OF FILTER AND POWER GRID	50
11	APPENDIX D : BODE PLOTS OF PHASE LOCKED LOOP	61