

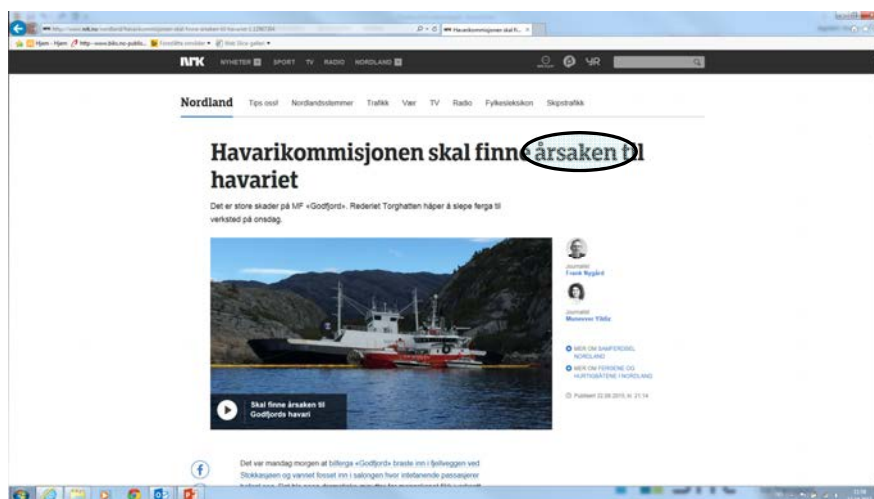
Framework and analysis process for systematic safety investigations

=

The SHT method

www.sht.no

*Ingvild Ytrehus
Coordinator Advisory Staff*



Accident Investigation Board Norway



Aviation
1923/89

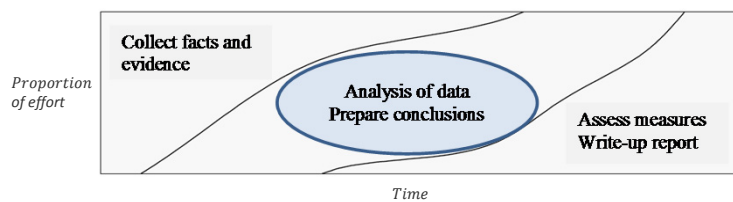
Rail
2002

Road
2005

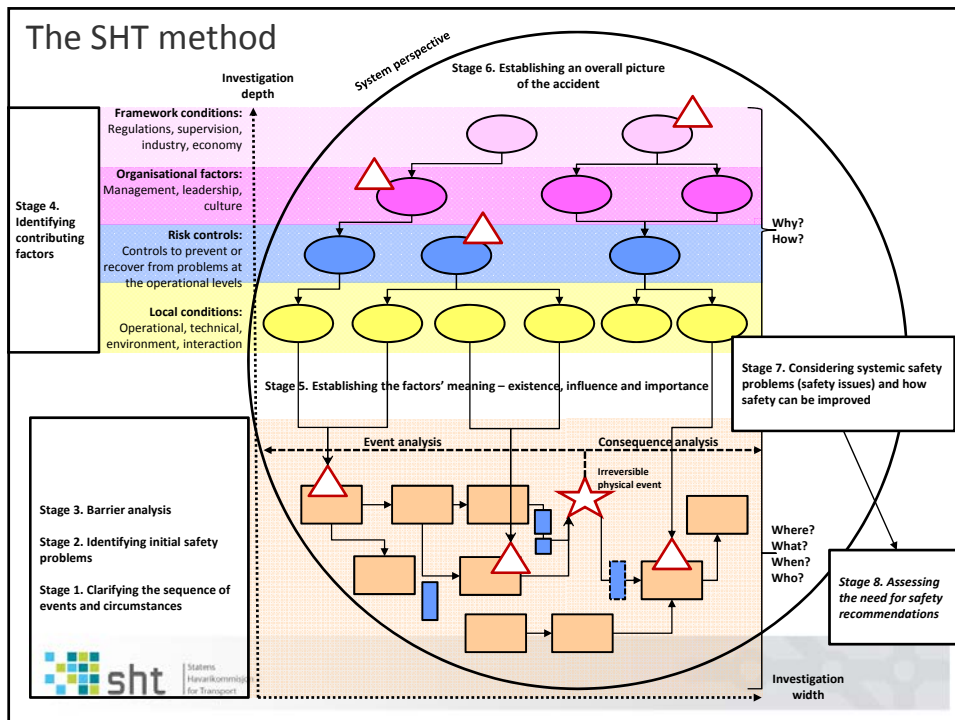
Marine
2008

AIBN is a public committee of inquiry. The purpose of AIBN investigations is to clarify the sequence of events and factors which are assumed to be of importance for the prevention of transport accidents. The AIBN shall not apportion blame or liability.

Investigation activities over time

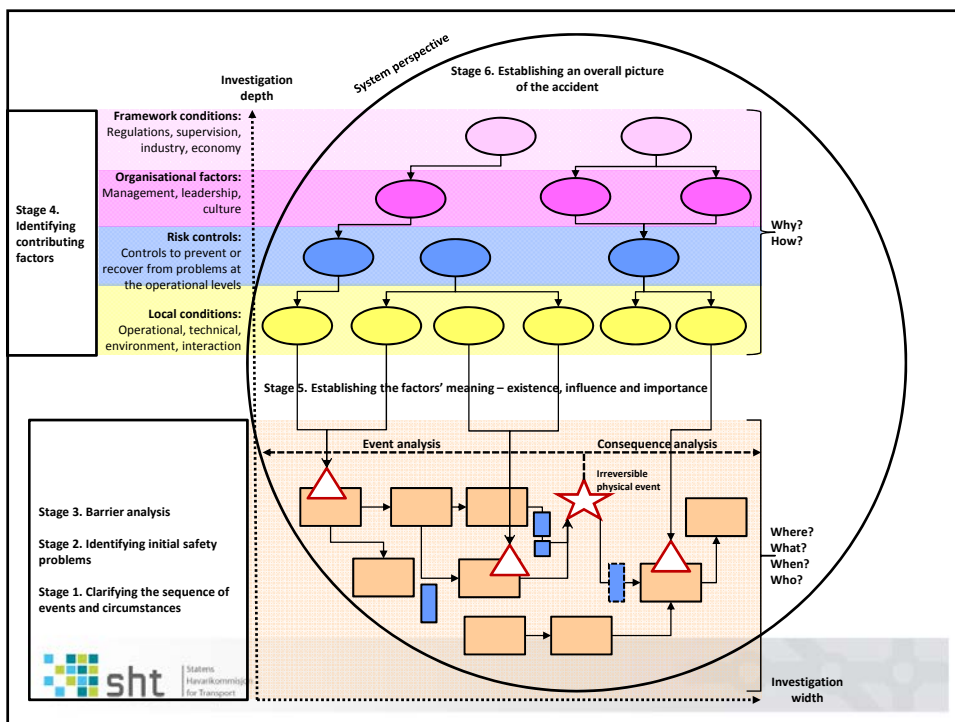
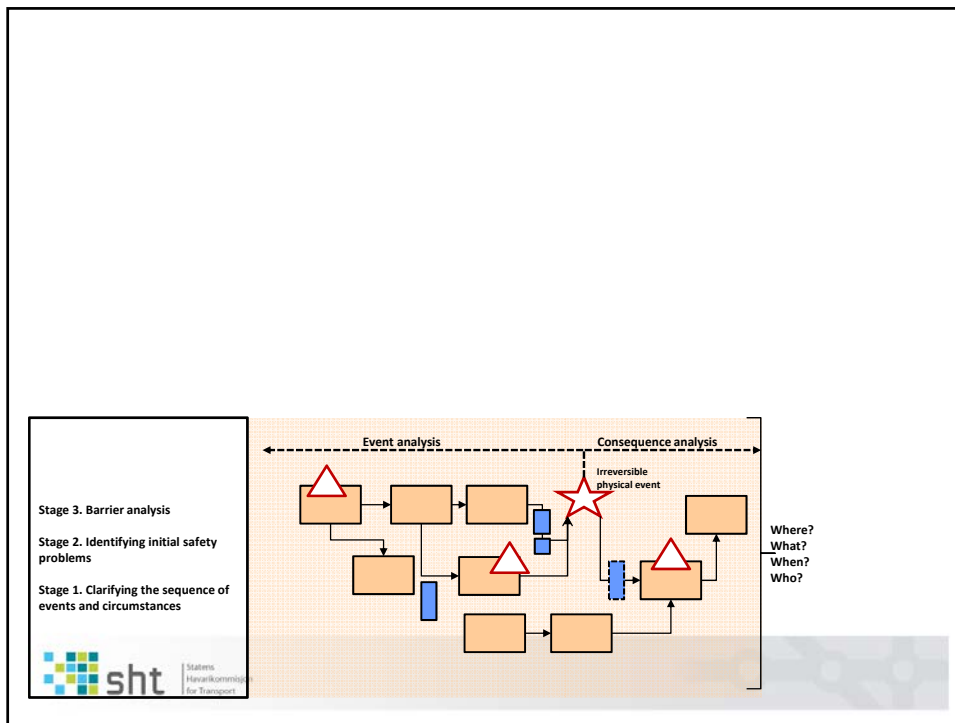


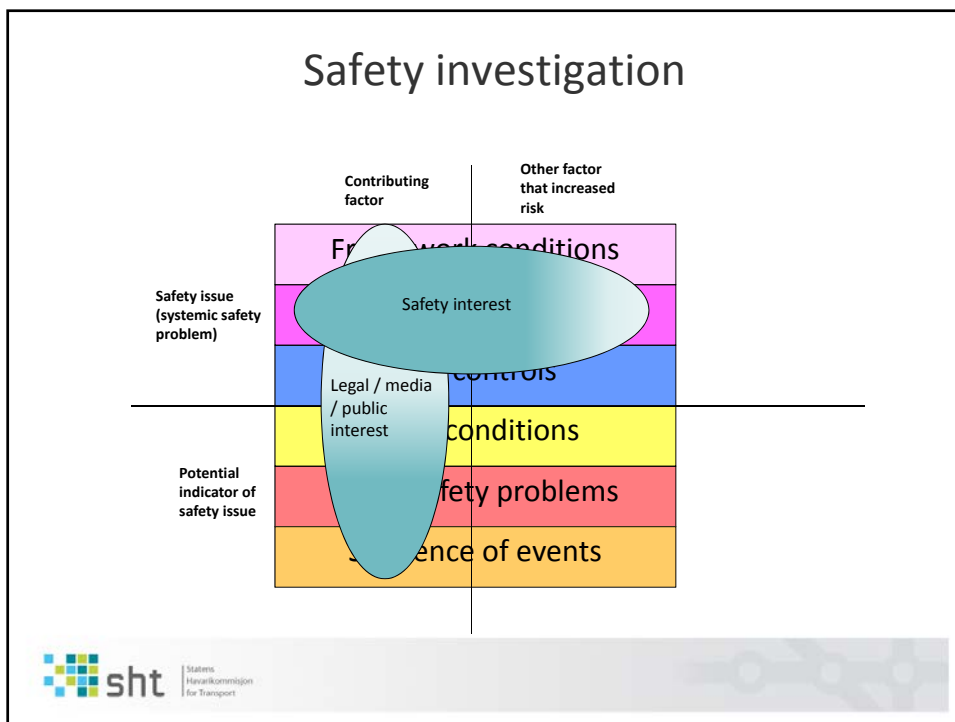
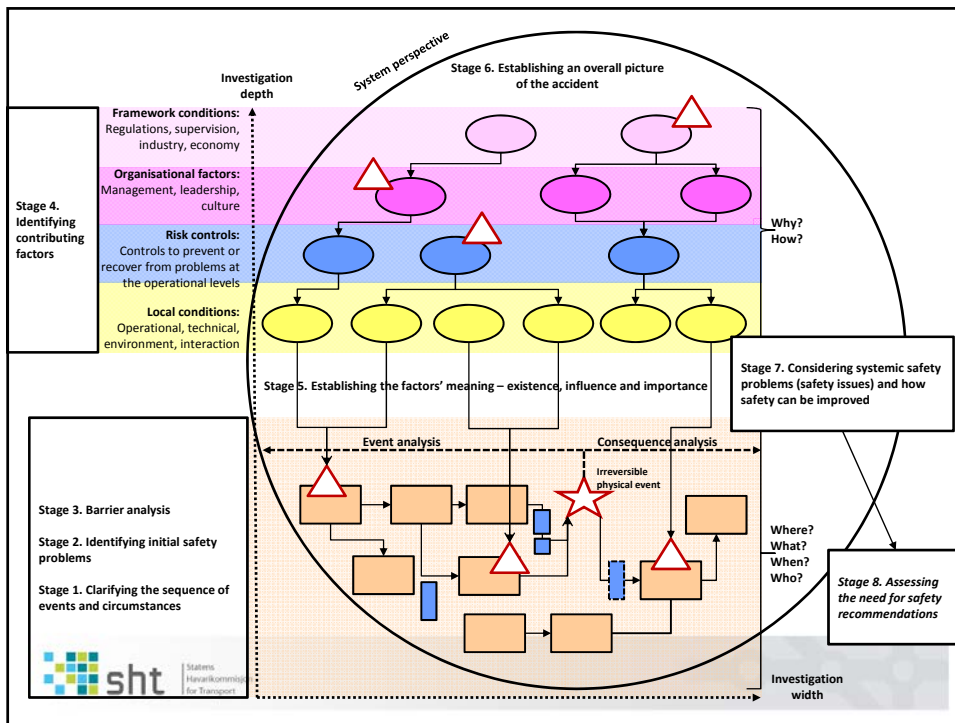
- The AIBN decides the scope of investigations.
- Publish report ~ 12 months.
- The investigation relies on good communication and contact with those directly involved, organizations and authorities.



Key aspects

- Structured analysis process.
- 8 stages - adapted to the scope and complexity of the investigation.
- SHTs mandate:
 - what – why – how to prevent*
- A bridge between the practical investigation and the accident models/theories.
- The circle represents:
 - The iterative process
 - System perspective
- The initial safety problems can be seen as potential indicators of systemic safety problems (safety issues).





Safety recommendations

- To the responsible organization or regulator to address a specific safety issue – no solution.
- Assessing the need for safety recommendations based on:
 - Importance of safety issue (not degree of contribution).
 - Safety action already taken - is more safety action needed?
 - Need to consider practicality.
- In interaction with the organization or regulator responsible for risk control – encourage safety action.
- The Ministry (SD/NFD) will take necessary action to ensure that due consideration is given to the safety recommendations.

To conclude...

The SHT method:

- Helps us to collect, organise, analyse and interpret information and data from accidents in a systematic and verifiable manner.
- Provides a shared understanding and frame of reference for the investigators working in a team.
- Helps us to identify safety issues - a foundation for communicating and learning.
- Applicable to investigations in all transport modes.