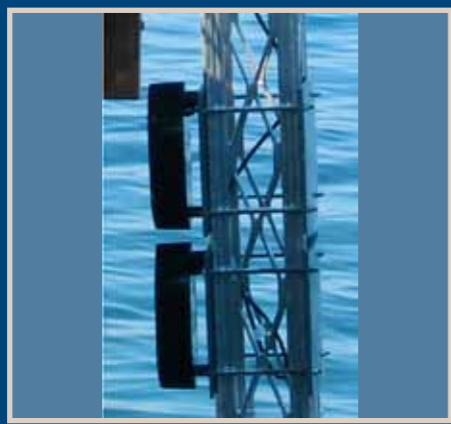
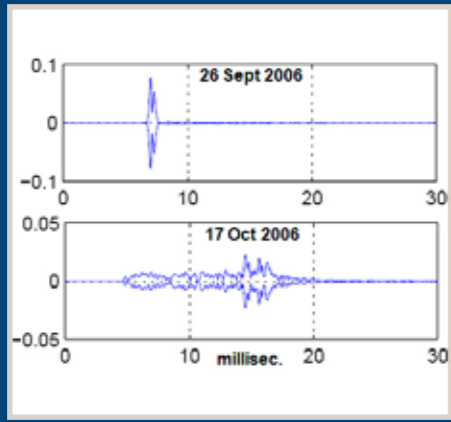
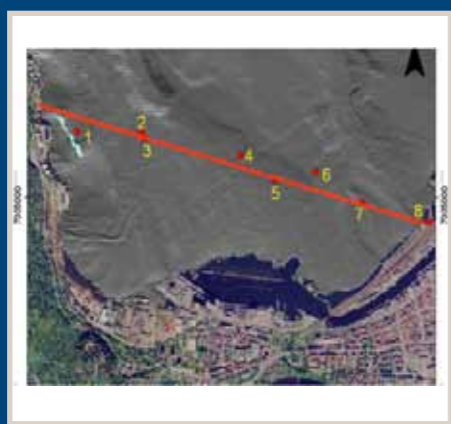


Surveillance of the Arctic Ocean

SINTEF believes that the development of an integrated surveillance system will contribute to:

A safe and sustainable exploitation of the resources in the Arctic Ocean.



Application areas:

- Offshore oil and gas
 - Operational surveillance and support
- Aquaculture
 - Operations monitoring and forecasting
- Fisheries
 - Marine Ecosystems Monitoring
- Environment
 - Reliable monitoring and prediction of seaborne pollution

R&D focus:

- Internet of Things in Ocean Space
- Wireless Sensor networks
- Ocean Modeling
- Optimized combination of models and measurements
- Model based system operation and integration
- Online supervision and immediate alarms
- High quality prediction and assessments

Contact:

Research Director Odd Kr. Ø. Pettersen
E-mail: odd.k.pettersen@sintef.no

Senior Scientist Tor Arne Reinen
E-mail: tor.a.reinen@sintef.no
SINTEF ICT

