

# European Wind Research Cooperation



Peter Hauge Madsen  
Head of DTU Wind Energy  
Head of EERA JP WIND

EERA DeepWind 2017  
Trondheim 18 Jan 2017

**DTU Wind Energy**  
Department of Wind Energy

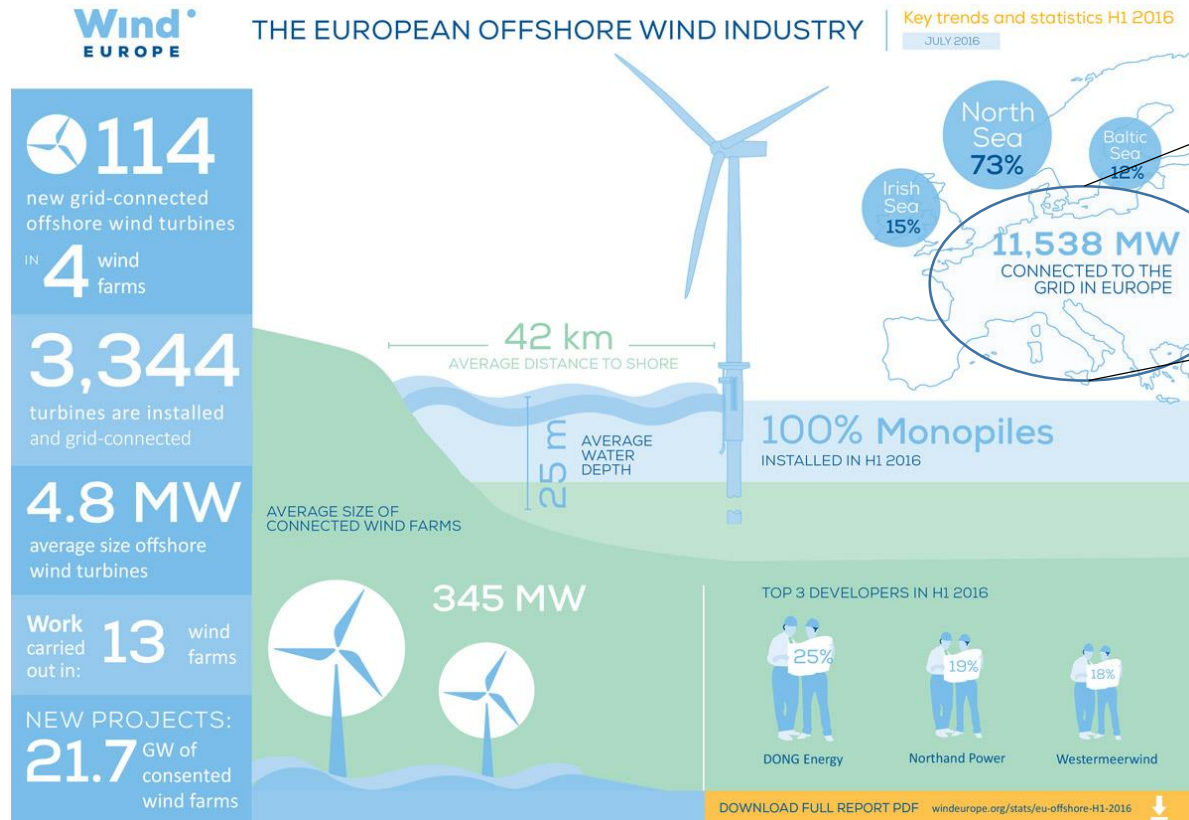
---



**“I want Europe’s Energy Union to become the world number one in renewable energies.”**

**Jean-Claude Juncker, President of the European Commission**

# Europe is the worlds No. 1 in offshore Wind energy



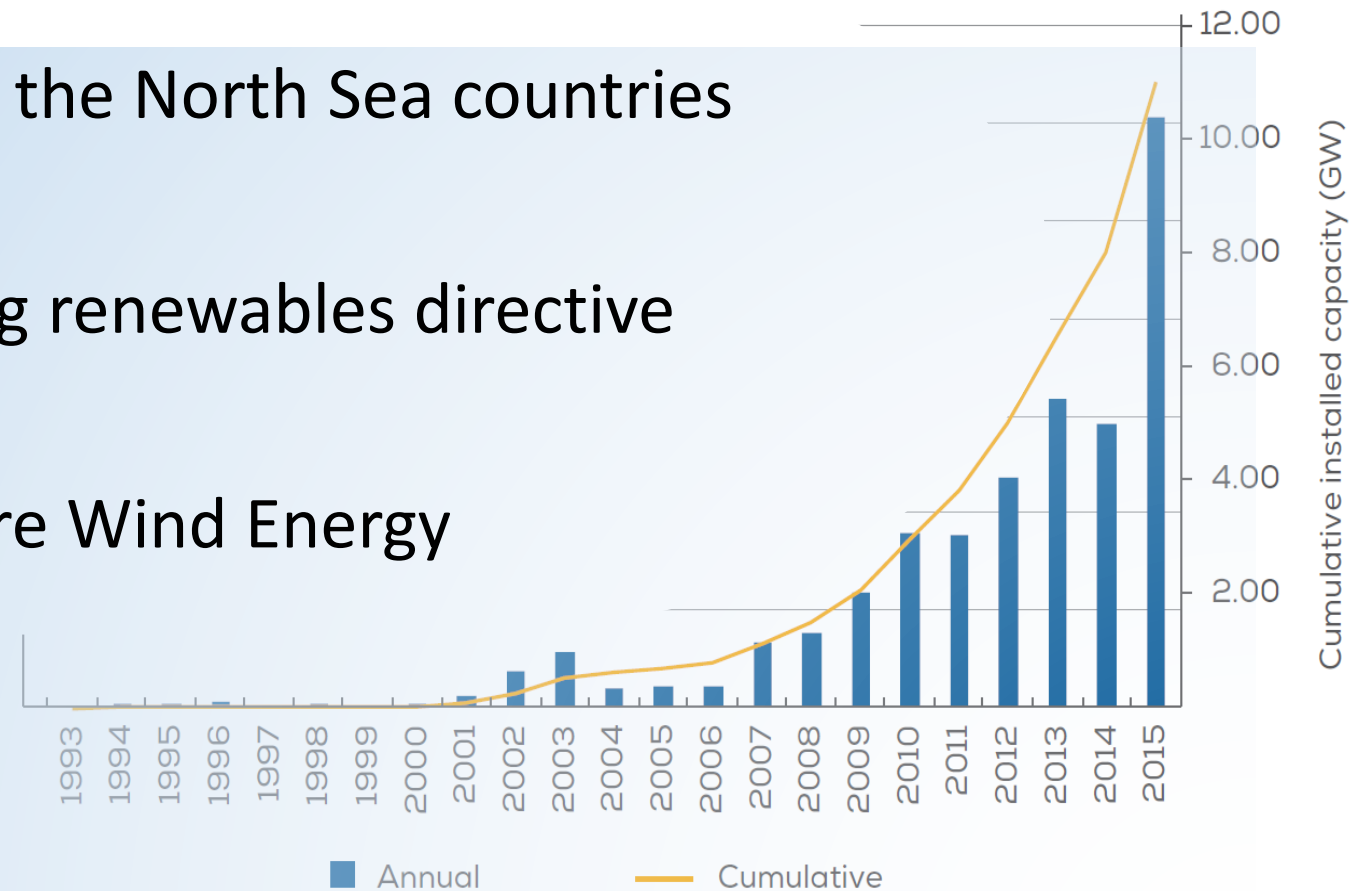
11,5MW Grid-connected by H1 2016

98GW by 2030

WindEurope target in scenario for 2030

# There is political support for offshore wind

- Energy Cooperation between the North Sea countries
- EU “winter package” including renewables directive
- SET-Plan priorities for Offshore Wind Energy



■ Annual      — Cumulative  
*EU offshore wind annual and cumulative capacity 2000-2015,*  
*source: ETIPWIND SRIA 2016*

# The industry is breaking the records for prices of offshore Kwh

World records...

..on time



Already beating the targets defined in the SET-Plan offshore strategy in January 2016:

- ✓ **less than 10 ct€/kWh by 2020**  
and to
- **less than 7ct€/kWh by 2030;**

So,

how do we as the European R&D community  
enable Europe to reach the targets for  
offshore wind energy deployment 2030?

What objectives do we pursue?

# ETIPWind objectives



Reduce costs



Facilitate system  
integration



Reinforce European  
technological  
leadership



Ensure first-class  
human resources

## EERA JP WIND agrees



We can reduce costs....



...facilitate system integration...



...and educate first-class human resources

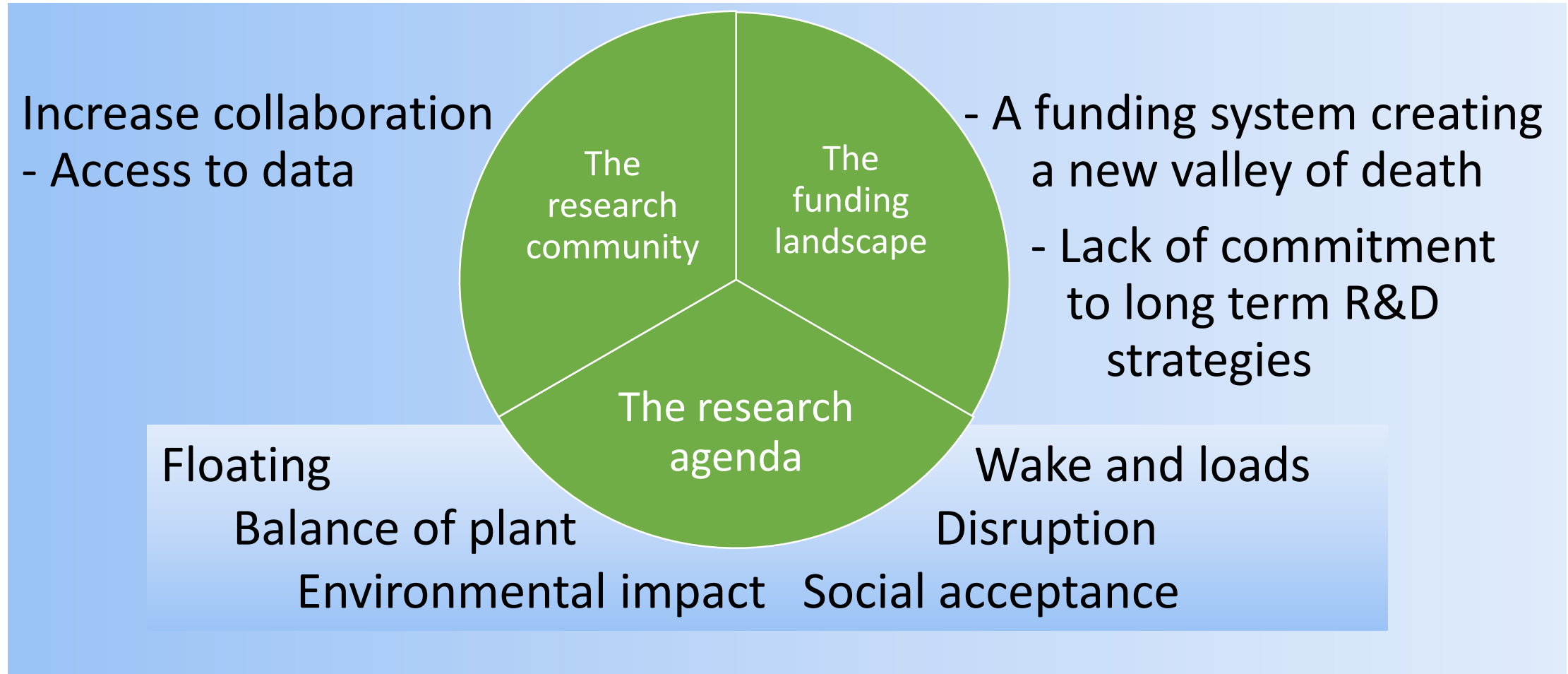




But to make sure that this benefits Europe  
we need to reinforce European technological  
leadership



# What are our challenges?



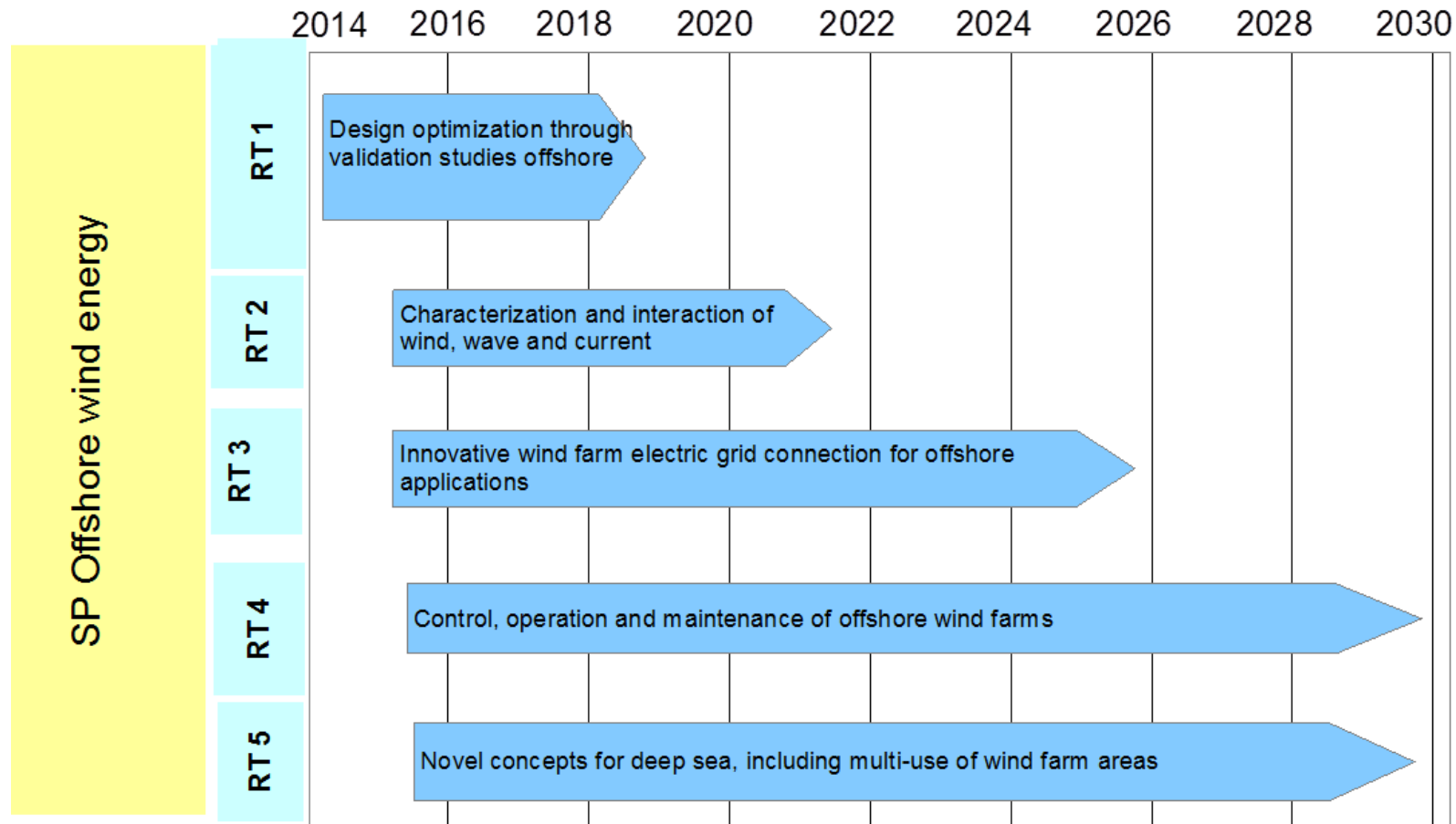
# EERA JP WIND a vehicle to collaborate

## EERA JP WIND

- An organisation under the EU SET-Plan
- 49 member organisations
- Building trust & knowledge exchange
- Major EU projects setup through EERA JP WIND collaboration
- IRPWIND project supporting JP WIND coordination and research



# EERA JP WIND medium to long term strategy for offshore wind energy



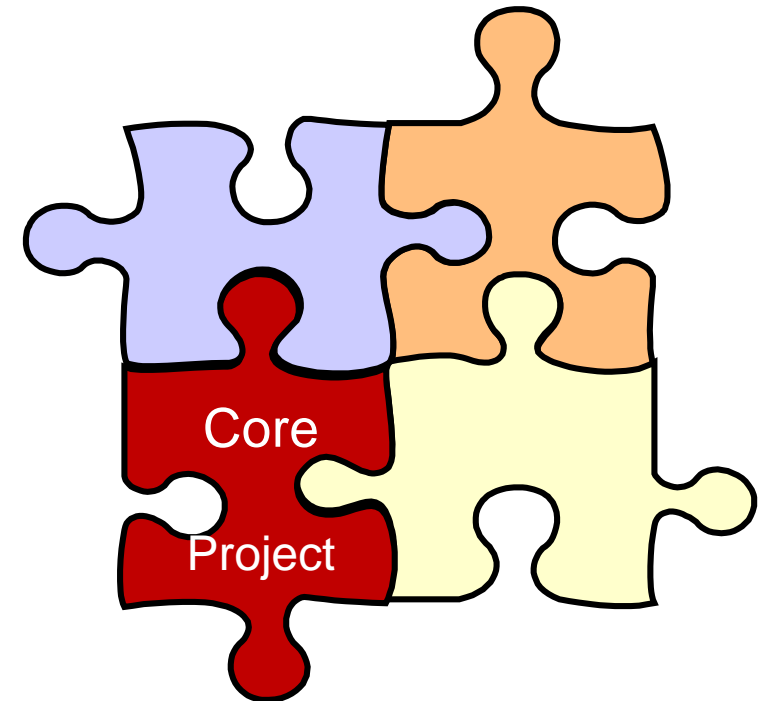
# IRPWIND – a stronger engine in JP WIND

Total budget: 9,8 M EUR

- 6 M EUR for CP
  - Offshore
  - Structural Reliability
  - Integration
- 4 M EUR for CSA
  - Mobility
  - Research Infrastructure
  - Secretariat, management

+ new  
initiatives on  
open data  
and  
institutional  
collaboration

Nationally funded  
collaborative projects



We have 1 year left of IRPWIND to develop a new and stronger EERA JP WIND

**Let's collaborate**

Thank you for your attention