

# Wave refraction analyses at the coast of Norway for offshore applications

**POLYTEC**

SEEING THINGS DIFFERENTLY

Ole Henrik Segtnan, Polytec R&D Institute

January 22 2014

EERA DeepWind'2014

# OBJECTIVES

**Introduction:** what is wave refraction?  
why study wave refraction?

**Methods:** how to calculate wave propagation paths?

**Application:** effect of current induced refraction on rays  
reaching the coastal regions off Norway

# **WAVE REFRACTION**

**Change in propagation direction due to a change in its transmission medium**

**Current and depth induced refraction**

# RELATION TO OFFSHORE WIND ENERGY

**Wave load: where will wave energy propagate?**

**Wave load: winds and waves misaligned, bending moment of the mast increases (Tarp-Johansen et al., 2009; Seidel, 2010).**

# **METHODS - ASSUMPTIONS**

**Linear wave theory**

**Relative change in water depth over wavelength is small**

**Relative change in current velocity over wavelength and period is small**

**No temporal variations in current velocity**

# METHODS – RAY CURVATURE (MATHIESEN, 1987)

$$\kappa = \frac{\mu_z \cdot \left( \frac{d\mathbf{r}}{dt} \times \frac{d^2\mathbf{r}}{dt^2} \right)}{\left| \frac{d\mathbf{r}}{dt} \right|^3}$$

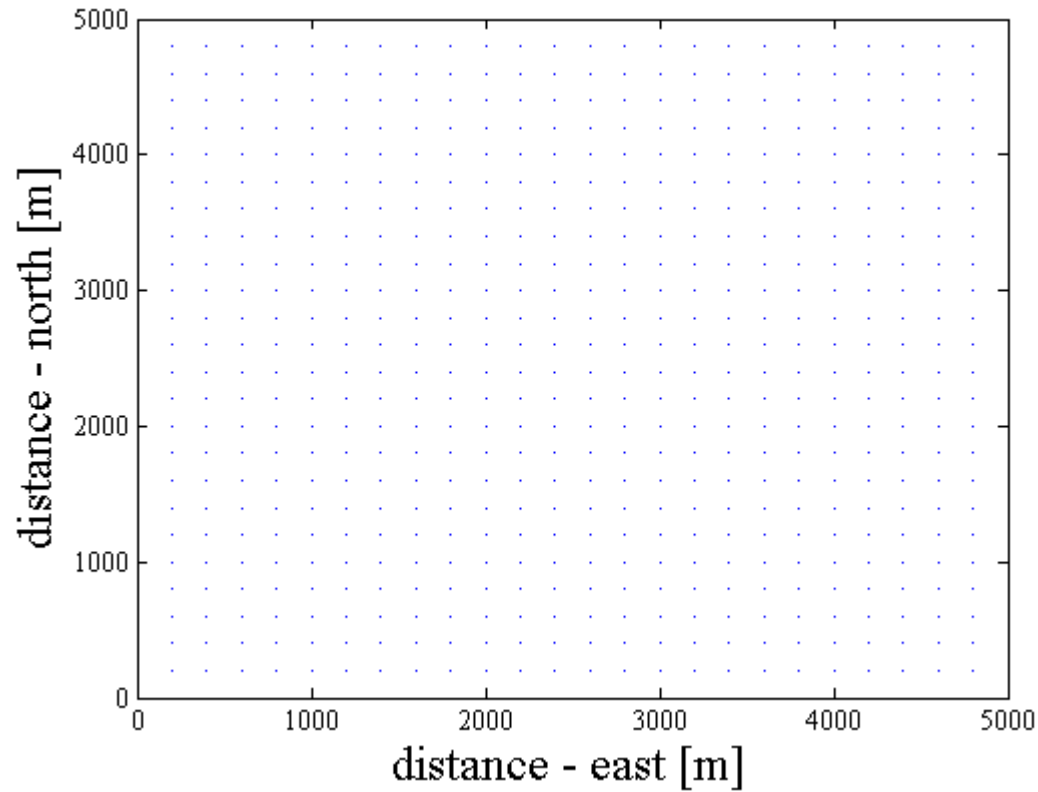
# **WAVE REFRACTION: COAST OF NORWAY**

**Depth induced refraction: Long waves, the topography affects the wave speed**

**$H \sim 20 \text{ m}$  (  $T \sim 8\text{s}$ )**

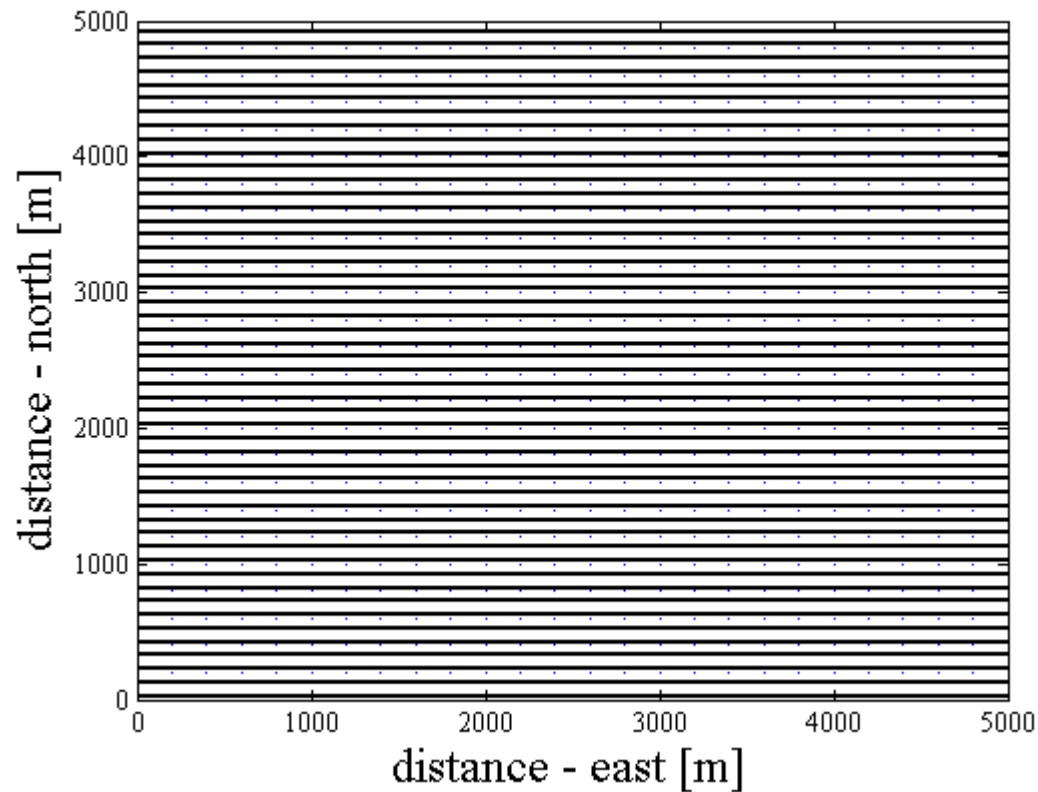
**Application to coastal area off Norway: only current induced refraction will be relevant**

# EXAMPLE – NO CURRENTS

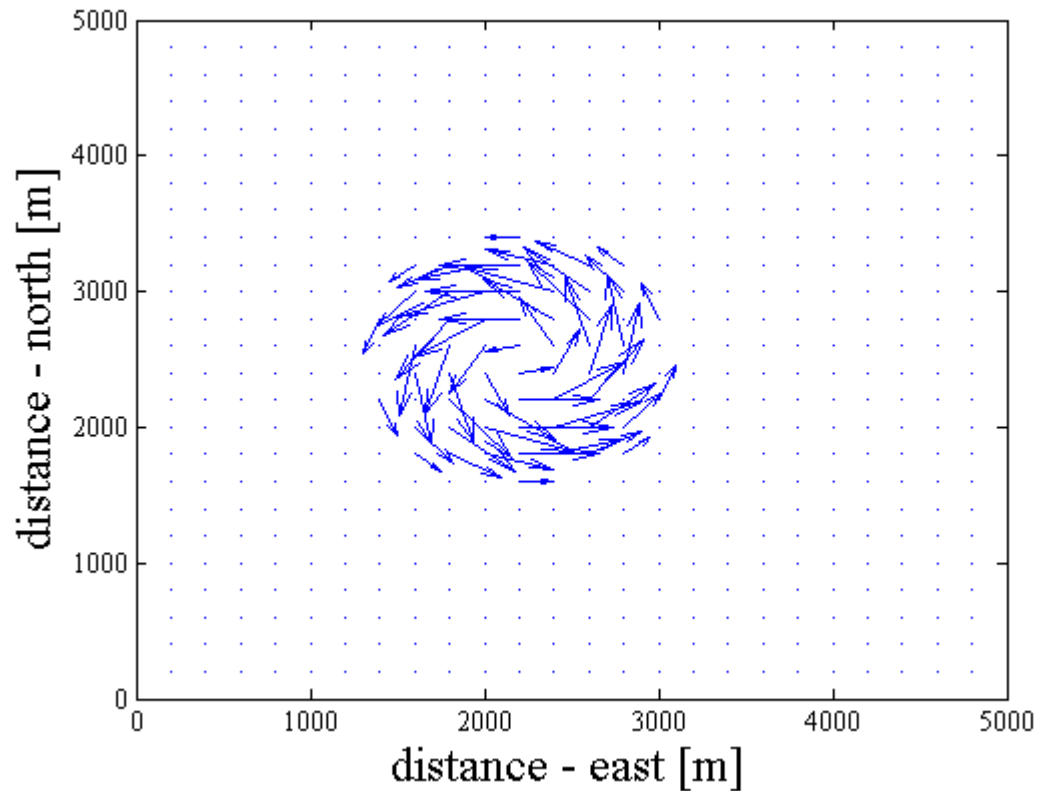




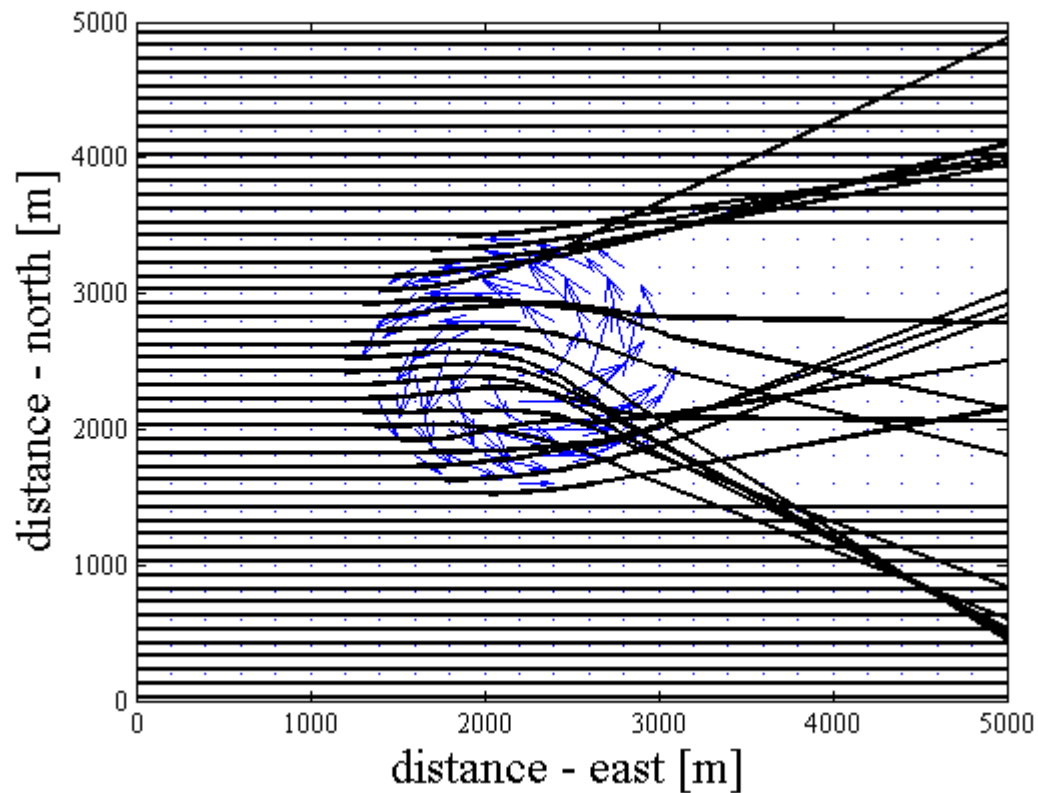
# EXAMPLE – NO CURRENTS



# EXAMPLE - VORTEX



# EXAMPLE - VORTEX



# **SURFACE VELOCITY**

**NorKyst800 (Albretsen et al., 2011)**

**Operational ocean model (Meterological inst.,  
IMR, NIVA)**

**800 spatial m resolution**

**Daily averages since July 2012**

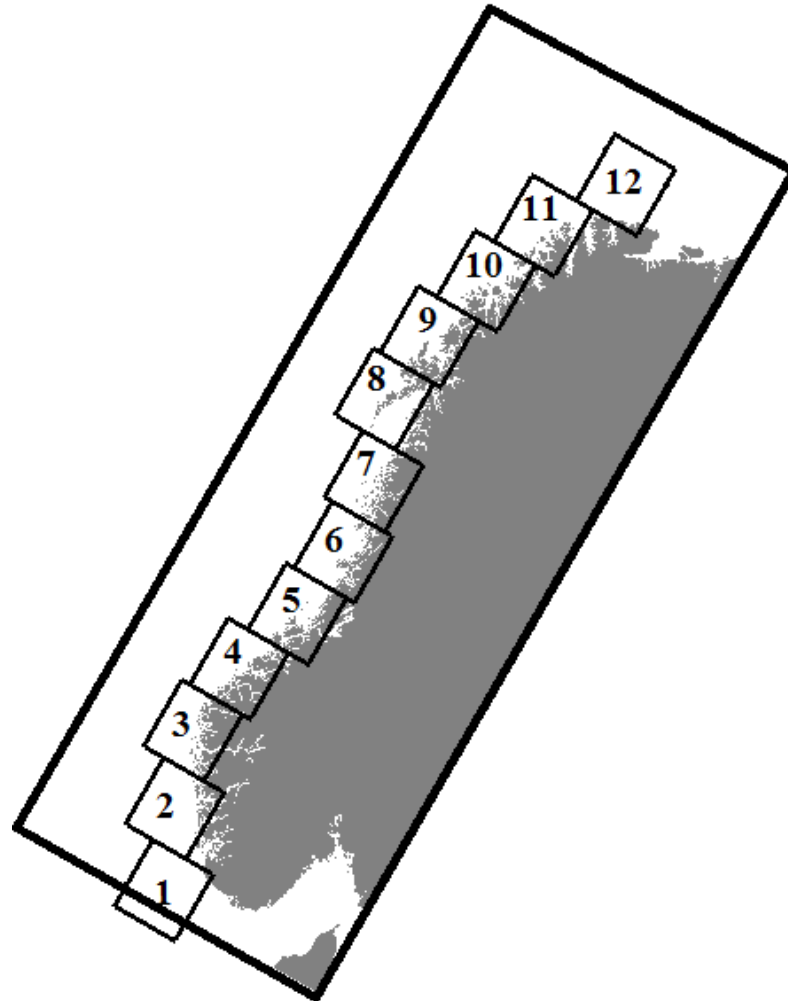
# APPLICATION

**For each current field: offshore wave propagation from 180° to 360°**

**Rays determined by eddies**

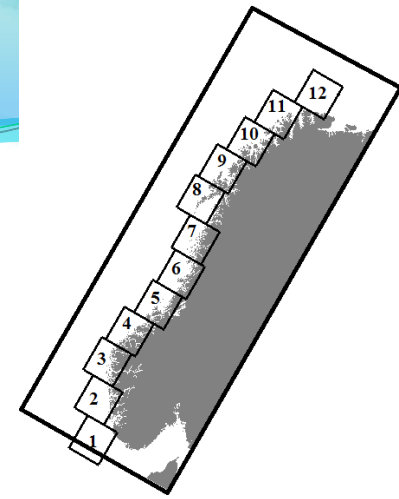
**All flow fields are representative for any wave propagation direction.**

# STUDY AREA AND SELECTED REGIONS

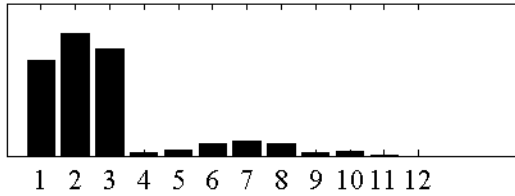


# RAY DISTRIBUTIONS

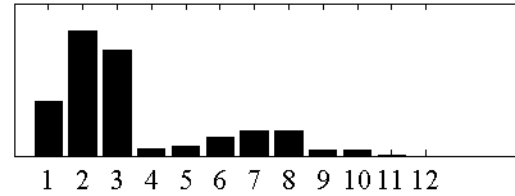
# RAY DISTRIBUTION



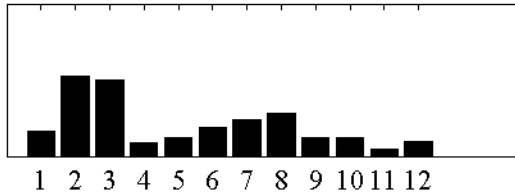
Offshore wave dir: 180°



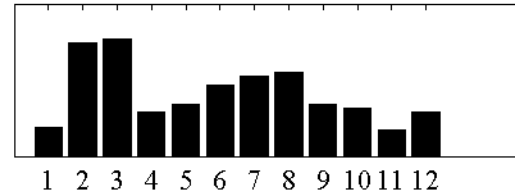
Offshore wave dir: 210°



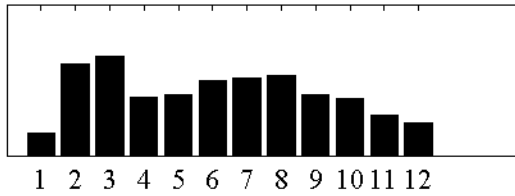
Offshore wave dir: 240°



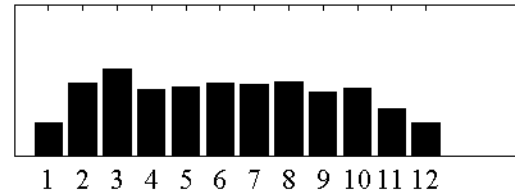
Offshore wave dir: 270°



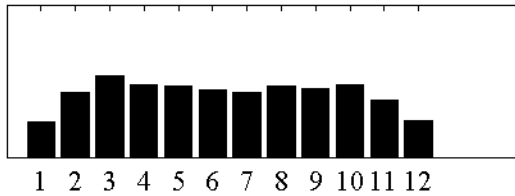
Offshore wave dir: 300°



Offshore wave dir: 330°

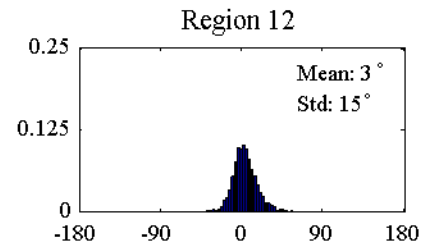
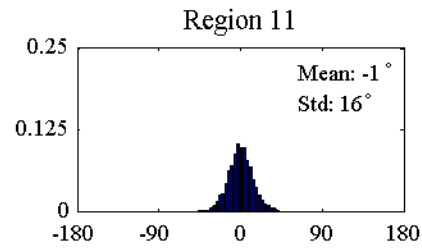
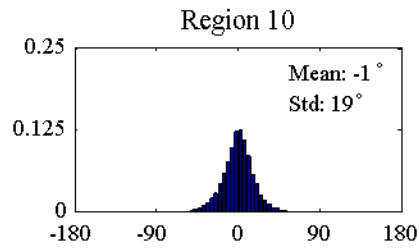
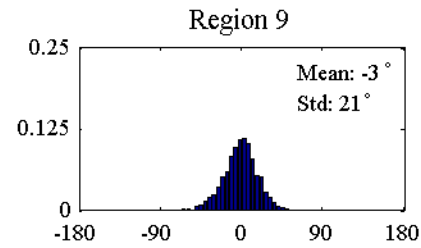
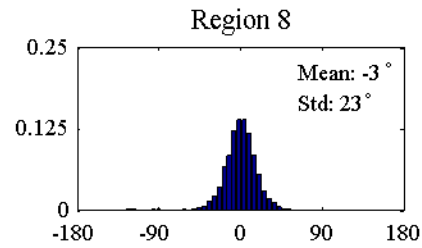
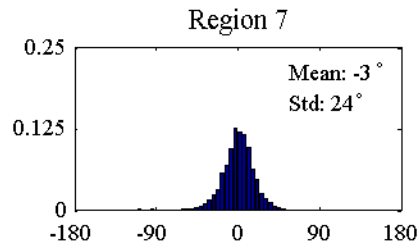
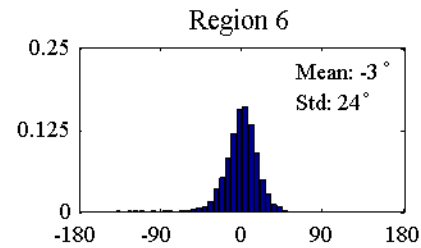
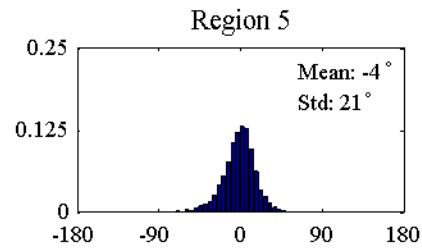
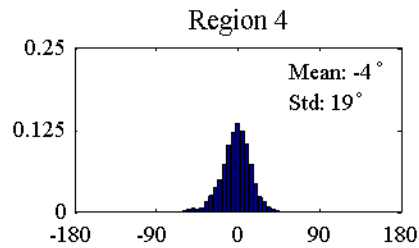
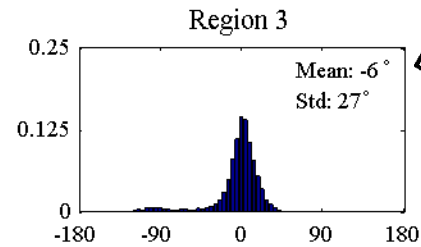
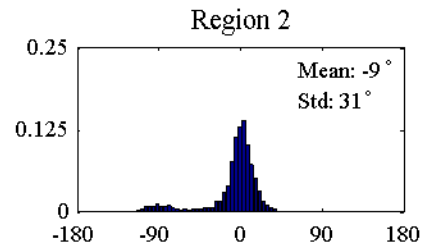
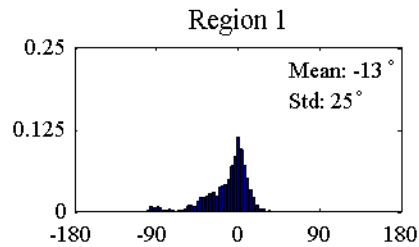
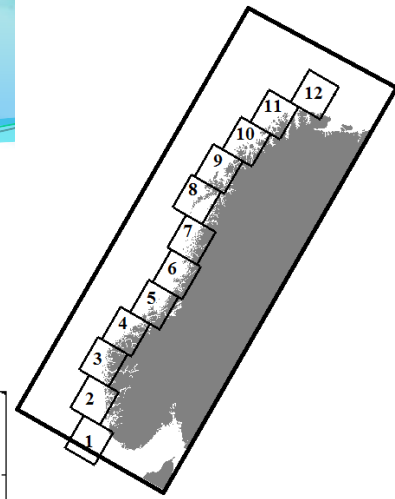


Offshore wave dir: 360°

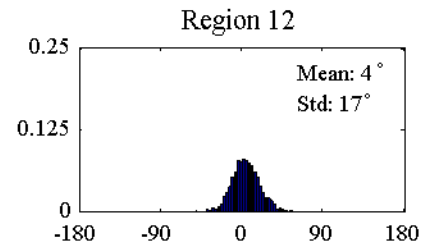
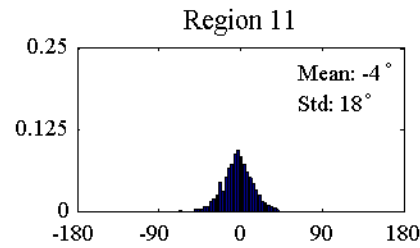
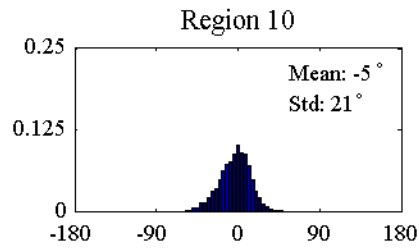
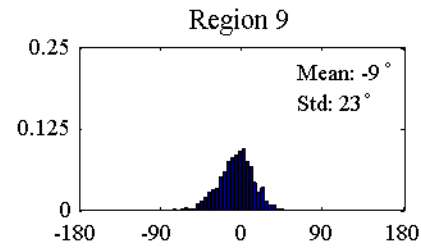
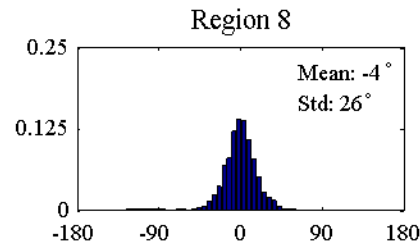
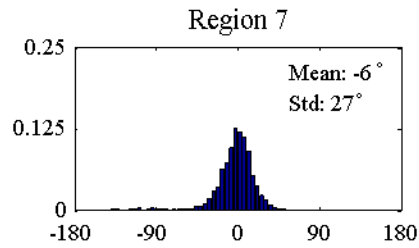
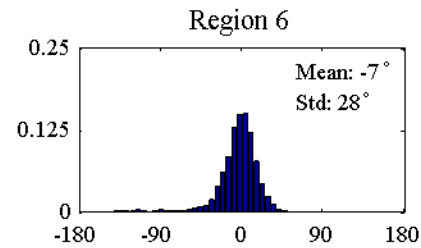
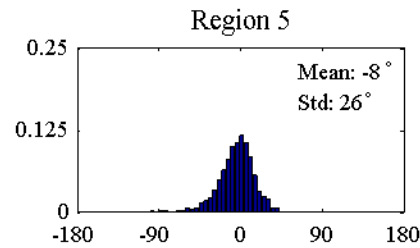
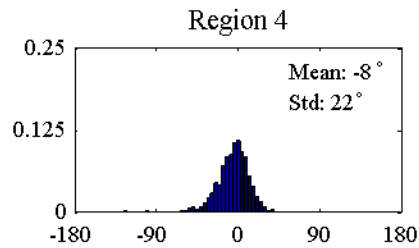
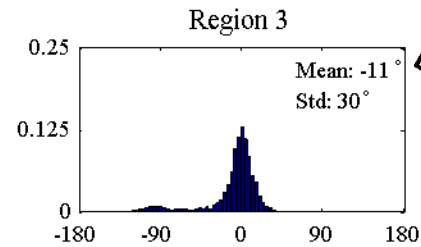
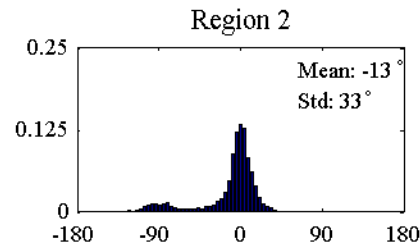
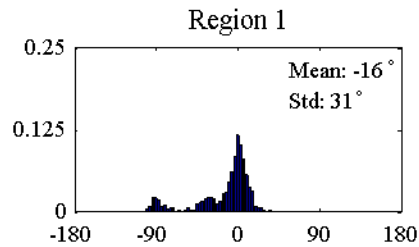
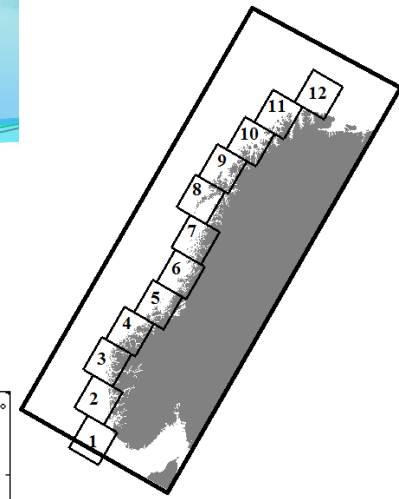




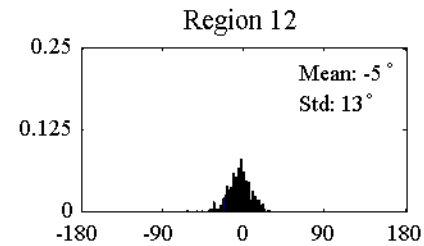
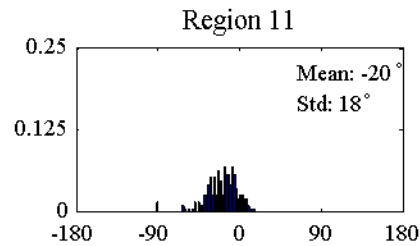
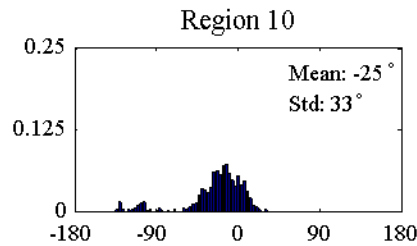
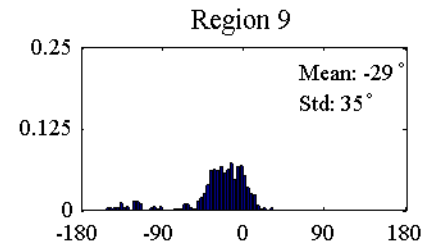
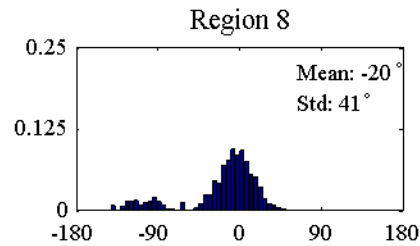
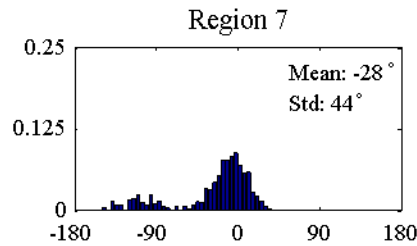
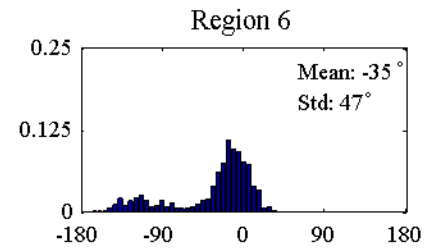
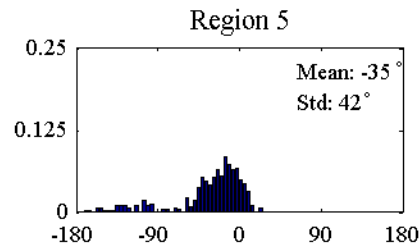
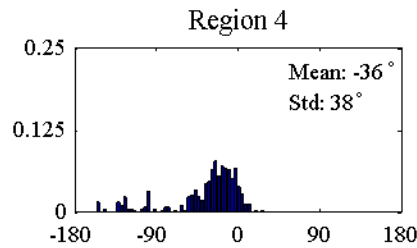
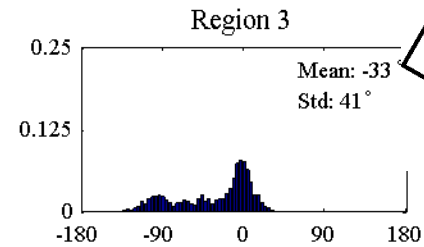
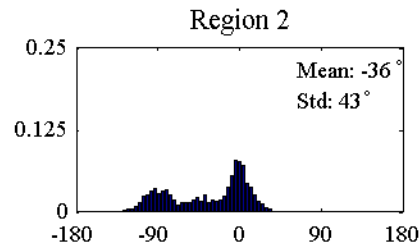
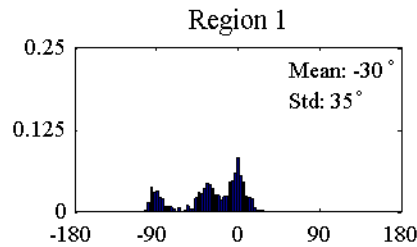
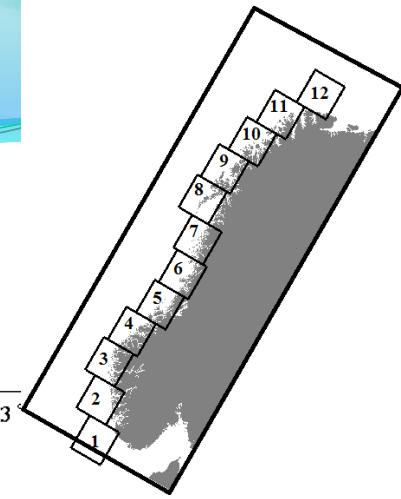
# DEVIATION DISTRIBUTION- NORTHERLY WINDS



# DEVIATION DISTRIBUTION- WESTERLY WINDS



# DEVIATION DISTRIBUTION- SOUTHERLY WINDS



# CONCLUSIONS

## **Southerly and westerly winds:**

Convergence of wave energy at southwestern part of Norway

South of LoppHAVet: Wave and wind are misaligned

Refraction effects may result in increased bending moment

**Thanks for your attention**