



Centre for intelligent electricity distribution
- to empower the future Smart Grid

Welcome and introduction

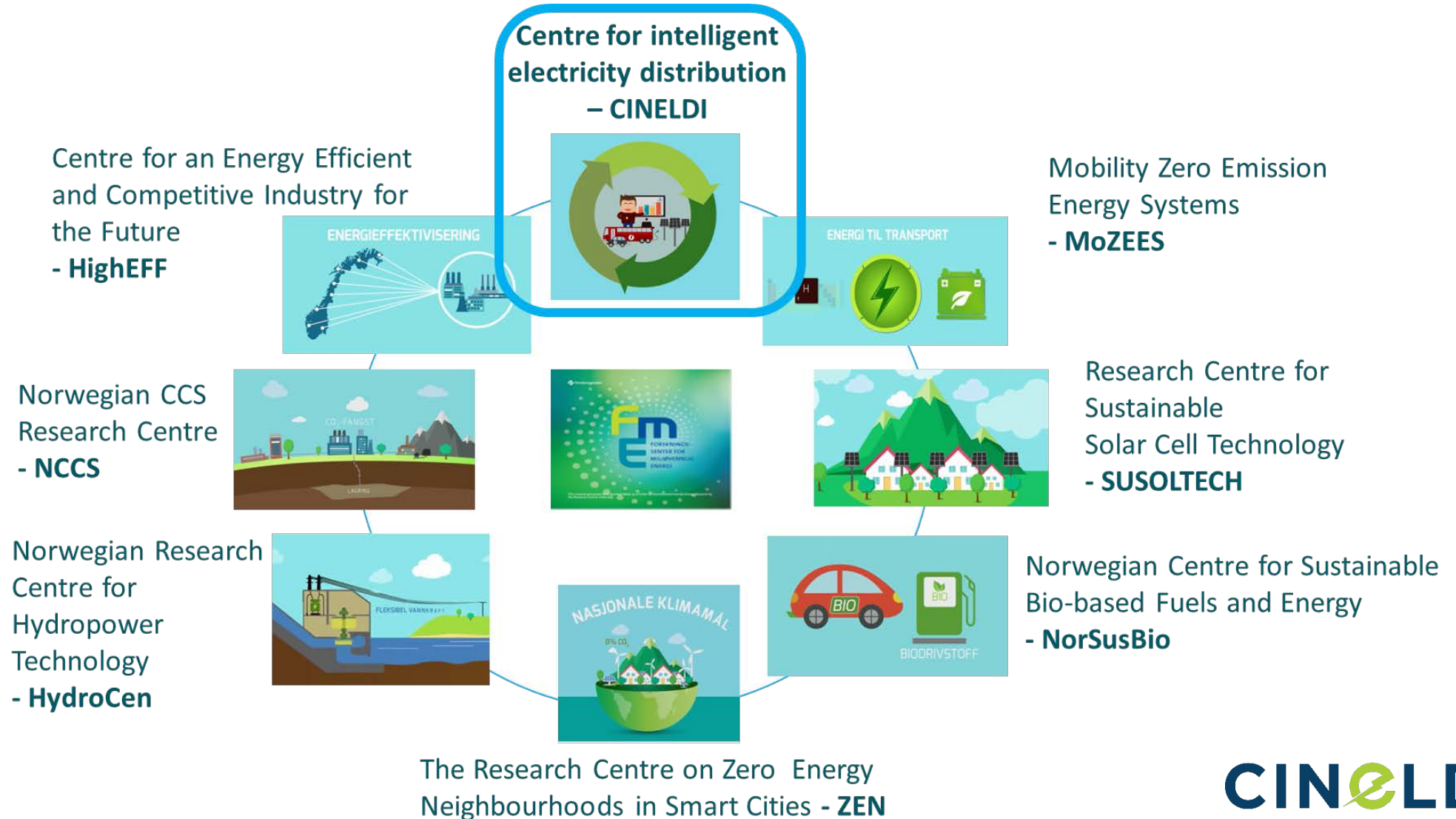
Future electricity distribution R&D conference, 2019-04-09

Gerd Kjølle

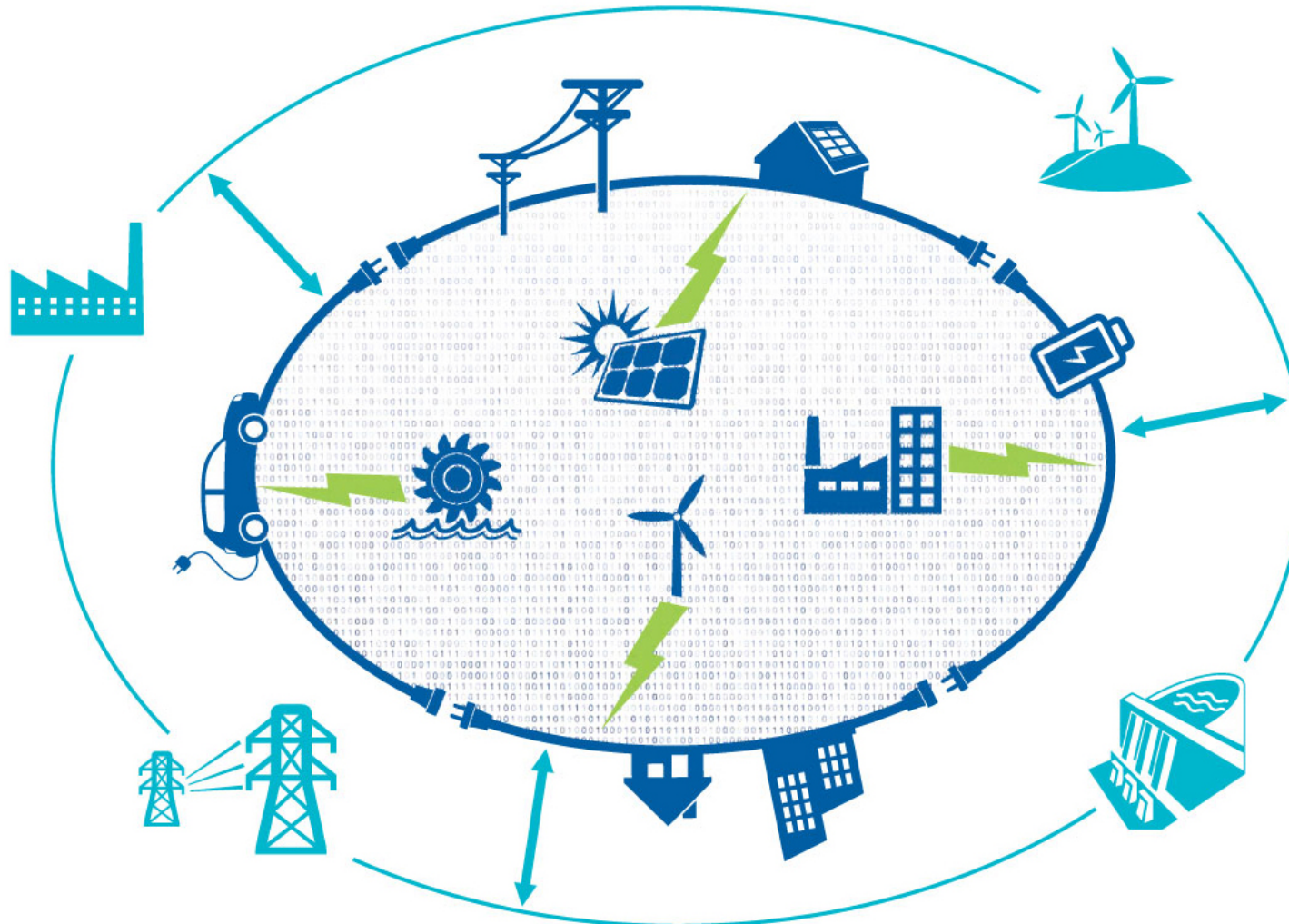




CINELDI is one of the Centres for Environment-friendly Energy Research in Norway (FME)



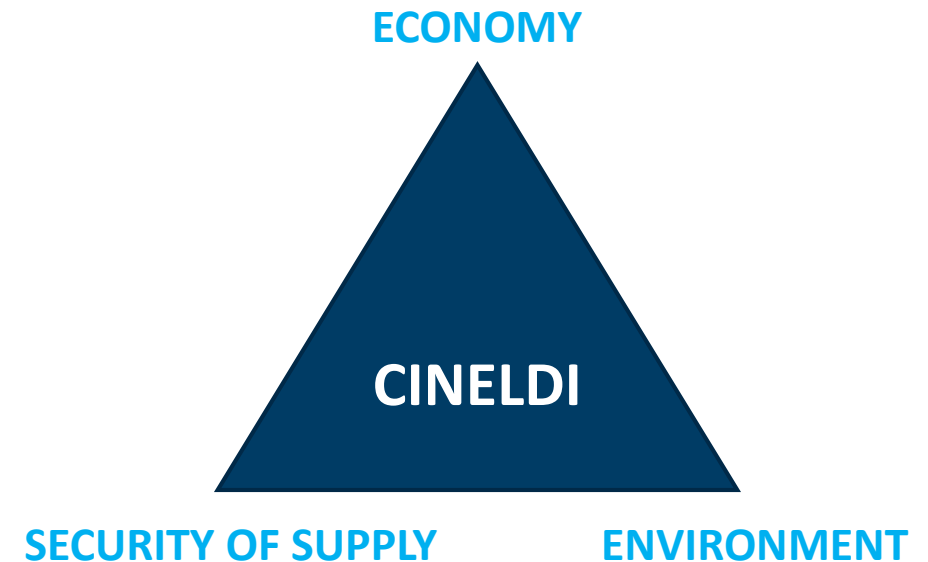
Centre for Intelligent Electricity Distribution (CINELDI) develops the electricity grid of the future



Research
perspective:
the Norwegian
grid anno
2040

CINELDI's main goal

- CINELDI will enable a cost-efficient realisation of the future flexible and robust electricity distribution grid



This will pave the ground for increased distributed generation from renewable resources, electrification of transport, and more efficient energy use



8 YEARS



29 PARTNERS



365,1 MNOK



SINTEF



NTNU



smartgrids
The Norwegian
Smartgrid Centre

NORD
POOL

Hafslund



Skagerak
Energi



Lyse



BKK

Eidsiva



HELGELAND
KRAFT
Strøm fra verdens vakreste kyst

agder energi



ISTADNETT



NTE

Statnett

ABB

powel

embriq
by Rejlers

Idon



smart grid
services cluster



SFE

Nordlandsnett



EnergiNorge

Kraft
CERT



Norges
nett



dsb
Direktoratet for
samfunnsikkerhet
og beredskap



NOKM
Nasjonal
kommunikasjons-
myndighet



HAUGALAND KRAFT



NVE

CINELDI Research areas (Work packages)

Smart grid
development and
asset management

WP1

Smart grid
operation

WP2

Interaction
DSO/TSO

WP3

Microgrids

WP4

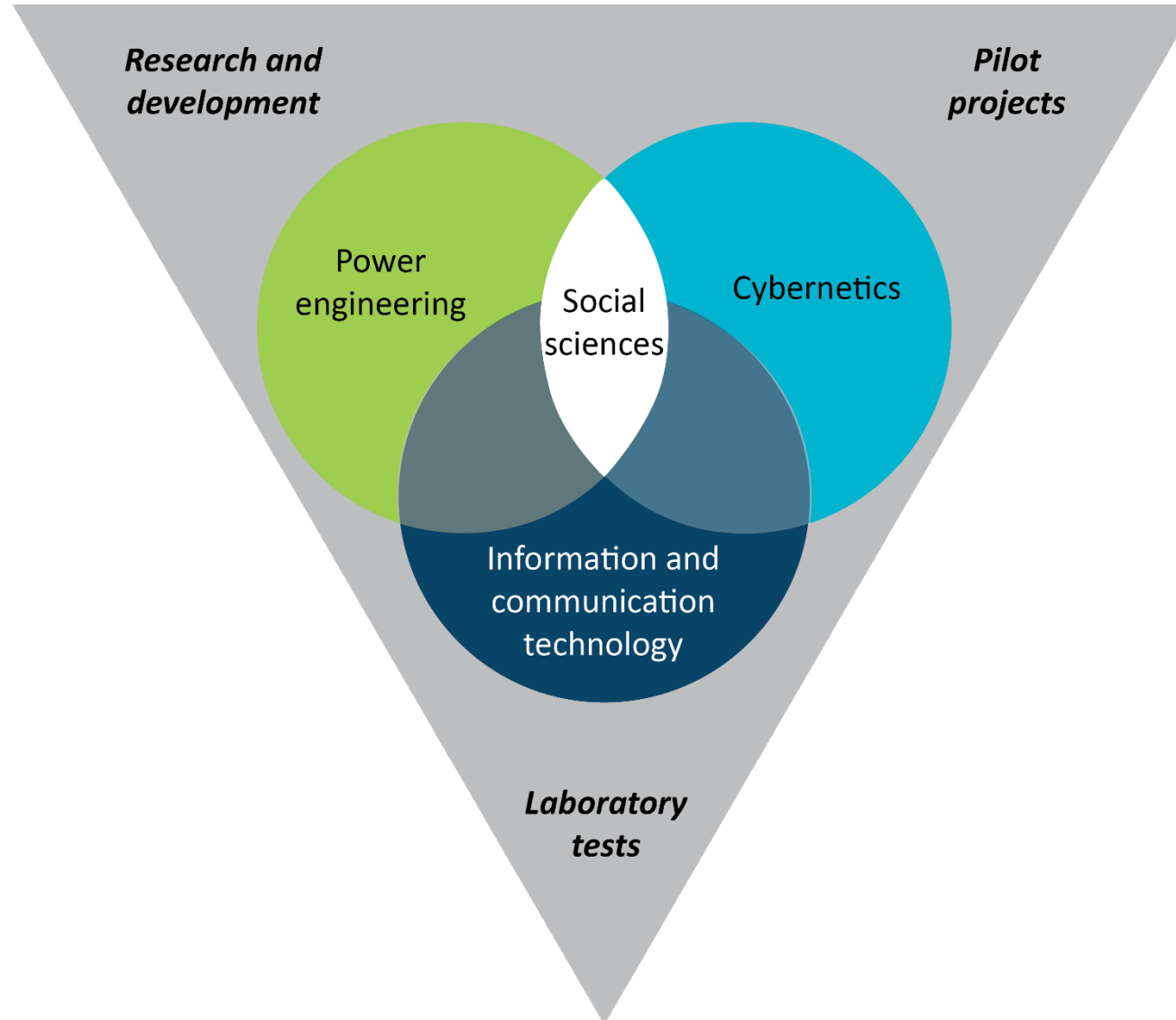
Smart grid scenarios and transition strategies

WP6

Flexible resources in the power system

WP5

CINELDI performs multidisciplinary research



CINELDI
targets
system
innovation

The CINELDI conference 2019:
Future electricity distribution grid R&D

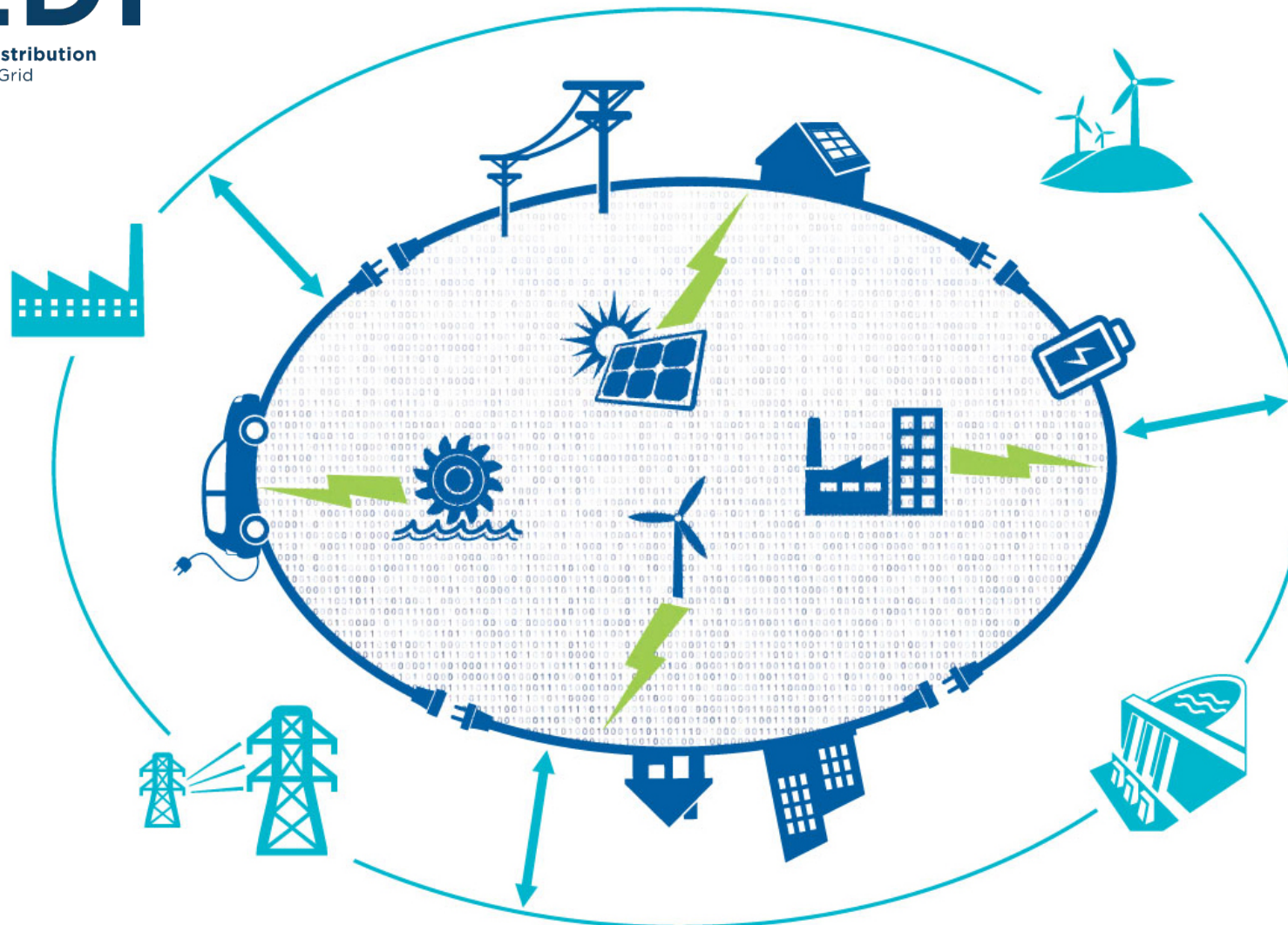
Radisson Blu Royal Garden, Trondheim

April 9, 10:00-17:00



Agenda

- 10:00 Welcome and introduction
- 10:30 Session 1: Flexible resources to facilitate the smart grid transition
(Lunch at 12:00)
- 14:00 Session 2: Smart grid communication and cybersecurity
- 16:25 Pilot projects, wrap up and closure
- 17:00 Conference end
- 19:00 Conference dinner at Royal Garden Hotel



This work is funded by CINELDI - Centre for intelligent electricity distribution, an 8 year Research Centre under the FME-scheme (Centre for Environment-friendly Energy Research, 257626/E20). The authors gratefully acknowledge the financial support from the Research Council of Norway and the CINELDI partners.