



Predictive Statistical Analysis of Cardiac Structural and Functional Remodelling

Kristin McLeod

Cardiac Modelling Department, Simula Research Laboratory, Oslo, Norway
Center for Cardiological Innovation (CCI), Norway

How does heart structure and function change over time in response to disease?

Ventricular structure in diseased hearts remodels over time. Mechanical pumping is also affected, reducing long-term functional efficiency. Statistical analysis allows us to predict how the structure and function changes over time. Predictive analysis of disease evolution can help to better understand diseases and to guide treatment planning.

Cardiac Imaging Data

Cardiac Magnetic Resonance (CMR)

- + Image structures
- + Tissue characterisation
- + Image cardiac function
- Expensive

Echocardiography (Echo)

- + Non-invasive
- + Inexpensive
- + Image cardiac function
- Poor spatial resolution

Computed Tomography (CT)

- + Good spatial resolution
- + Image structures
- Ionising radiation

Input Data

Data extraction

Modelling

Parameterisation

Population-Wise Analysis

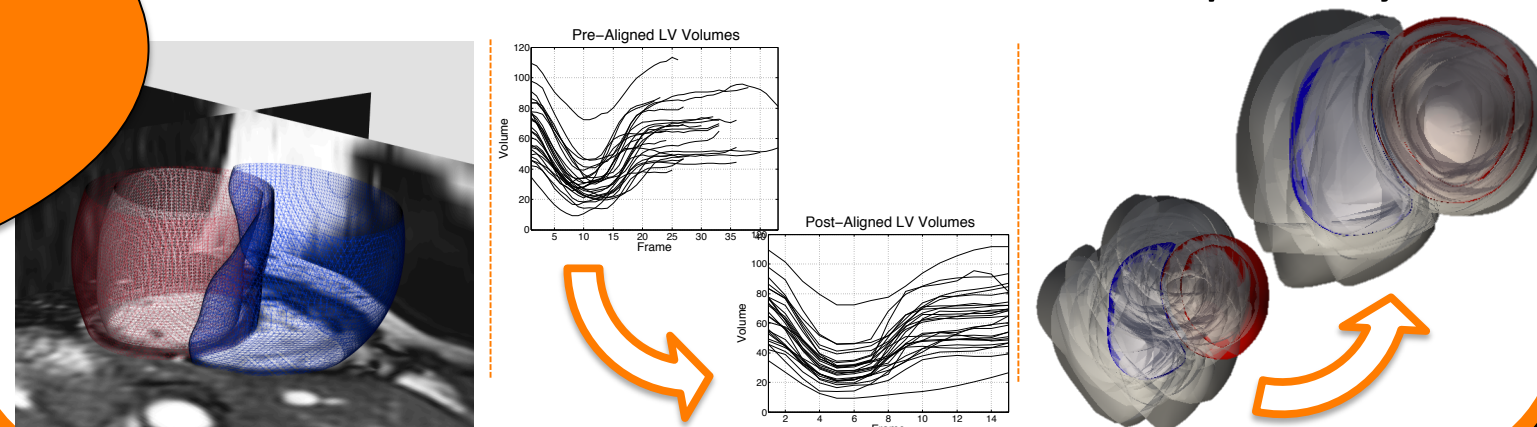
Structure

Segment ventricle shape from images

Segment image

Align temporally

Align spatially



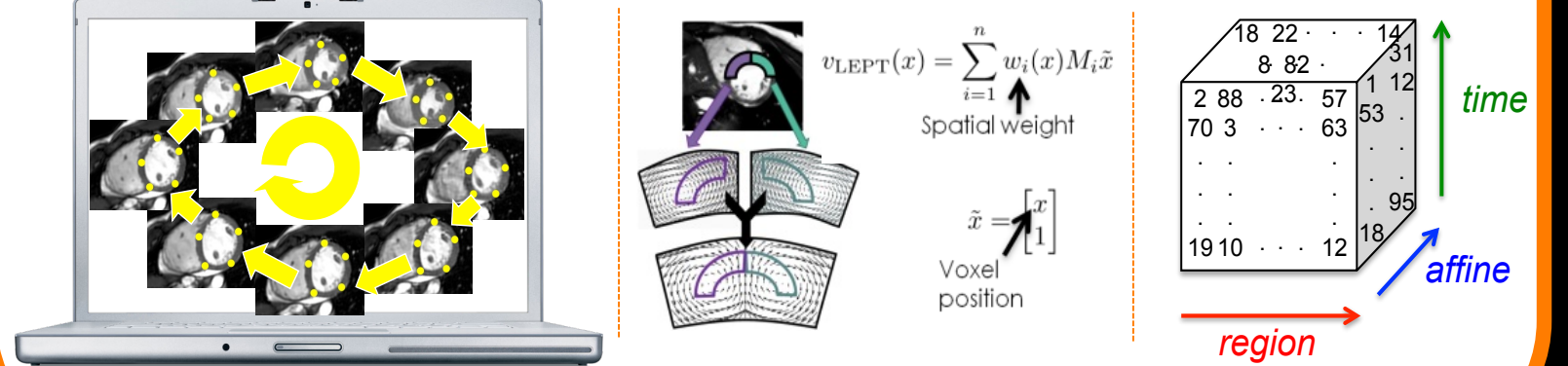
Function

Track motion over cardiac cycle from images

Non-rigid image registration

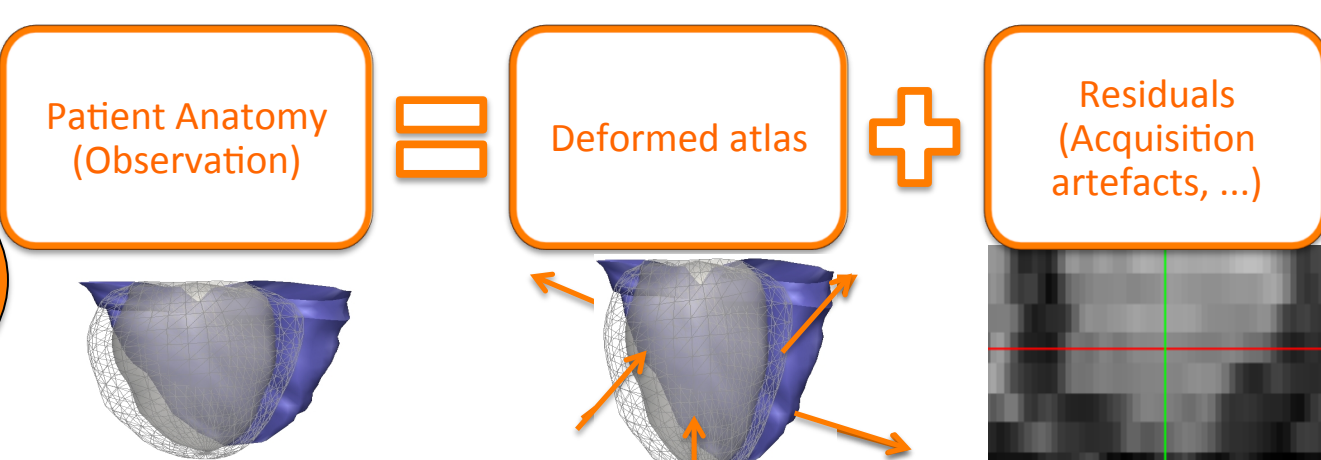
Polyaffine projection

Tensor construction



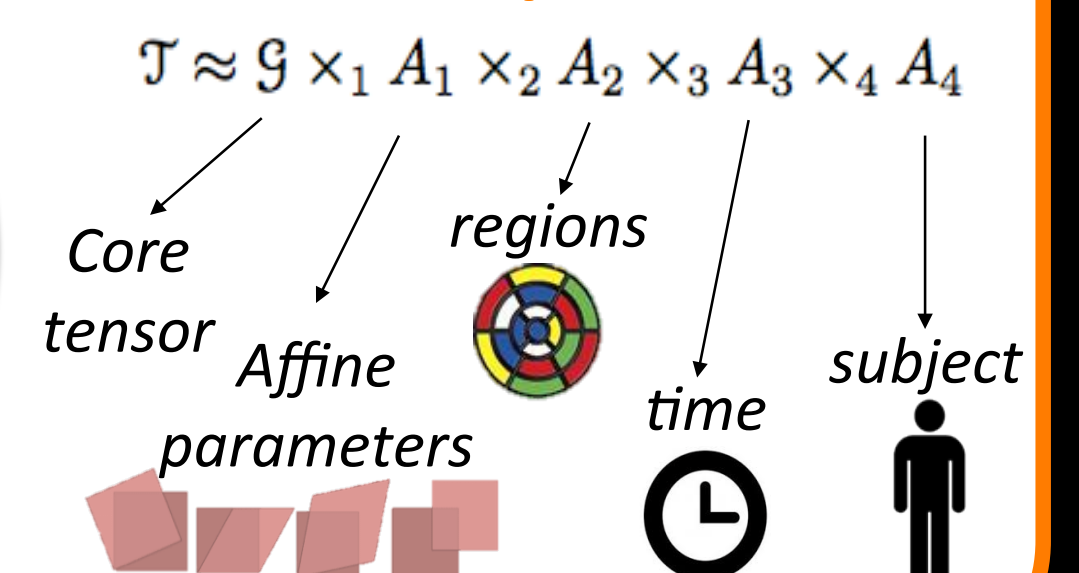
- McLeod et al. TMI 2015

Characterise shapes by deformations of an atlas geometry



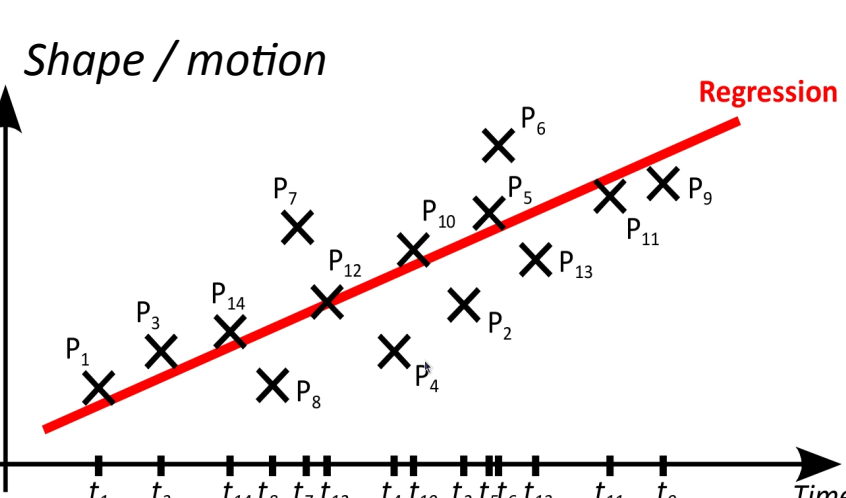
- McLeod et al. Modeling in Computational Biology and Biomedicine, 2013

Parameterise motion by 4-way tensor of affine parameters



- McLeod et al. MICCAI 2015

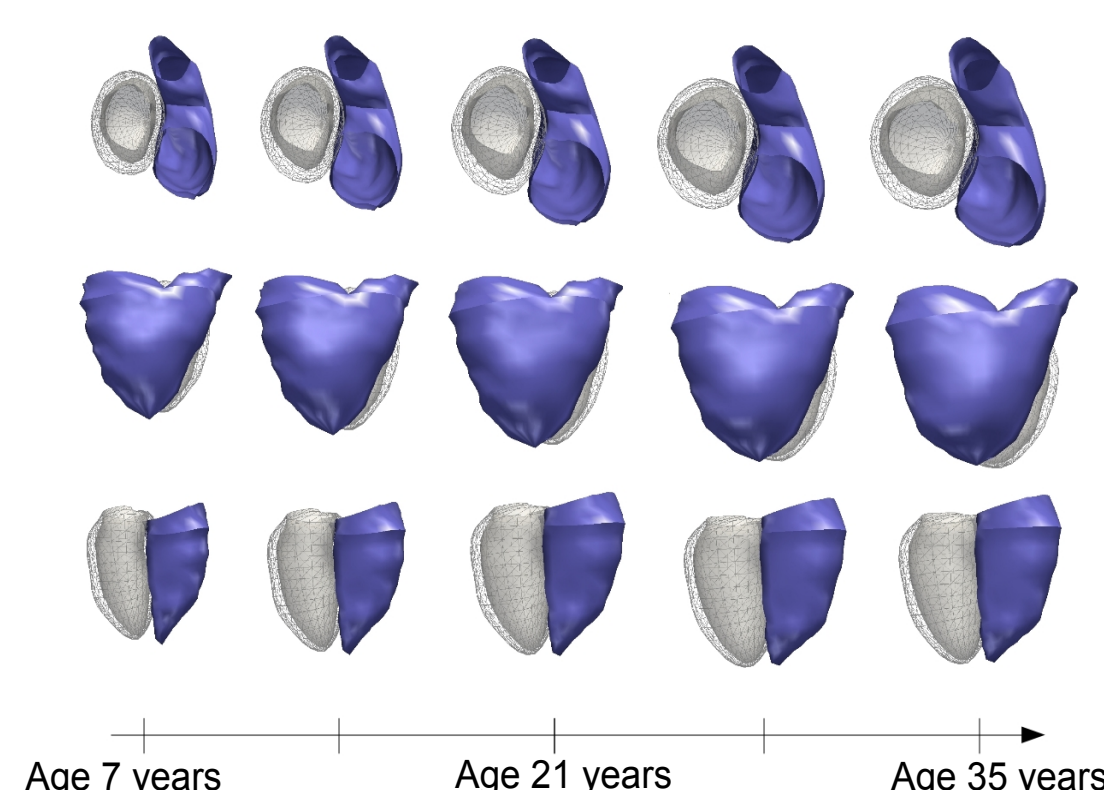
Predictive Analysis



Cross-sectional statistical design

Consider each subject as an observation along time, and perform regression of these observations to obtain a population-based statistical model

Structural remodelling



Functional evolution

