

90% tegl

Masteroppgave høst 2011

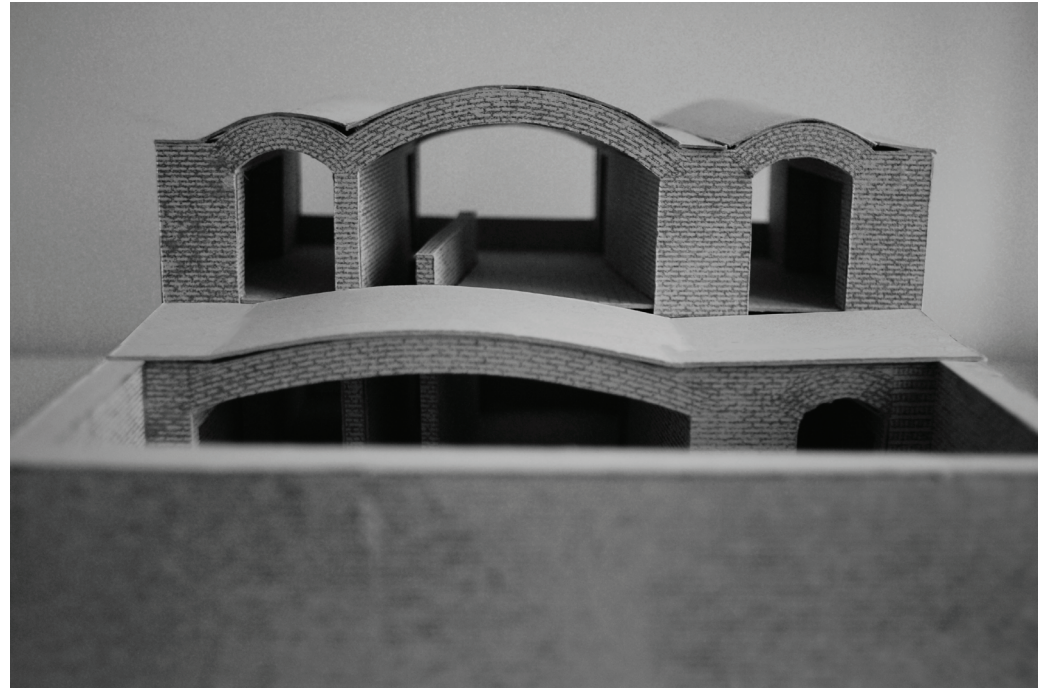
Kurs: Tektoniske Øvelser

Arkitektur og Designhøgskolen i Oslo

Kursansvarlig: Jan Olav Jensen

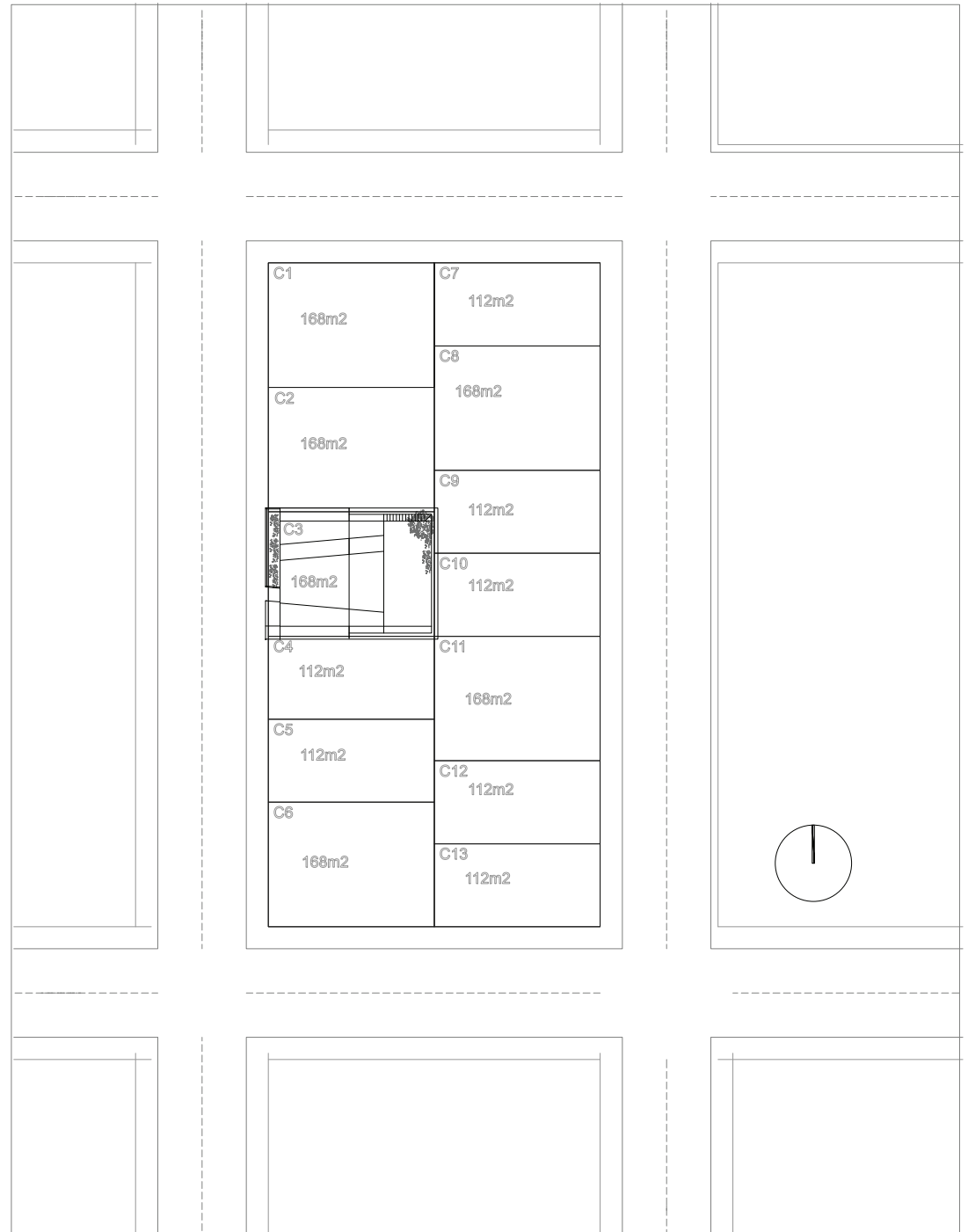
Sensor: Carl Viggo Hølmebakk

Cecilie Lande Andersen
Student



Oppgaven:
Tegne en enebolig, ca 200m²
90 % ett materiale
70 % grøntareal
stue, kjøkken, spisestue,
3 soverom, bad, gjeste-wc

Benspenn; ingen T-vegger
ingen 90° graders vinkler
Tomt: Fiktiv
Oslo





Inspirasjon:

AZL - Architects, Le Corbusier, Eladio Dieste, Sigur Lewerenz,
FKL- Architects, Knut Hjeltnes m.m.



devoted to one person. All the main rooms, with the exception of the study, enjoy good light, even though they are arranged around the three sides of the courtyard (Fig. 7.23).

In analysing the needs of his family, Dieste took account of the ages and sex of his children and concluded that he needed four bedrooms, excluding the maid's room. The constraints of the site made it impossible to incorporate a fourth bedroom at the same level as the others without losing access to natural light. Adding an additional

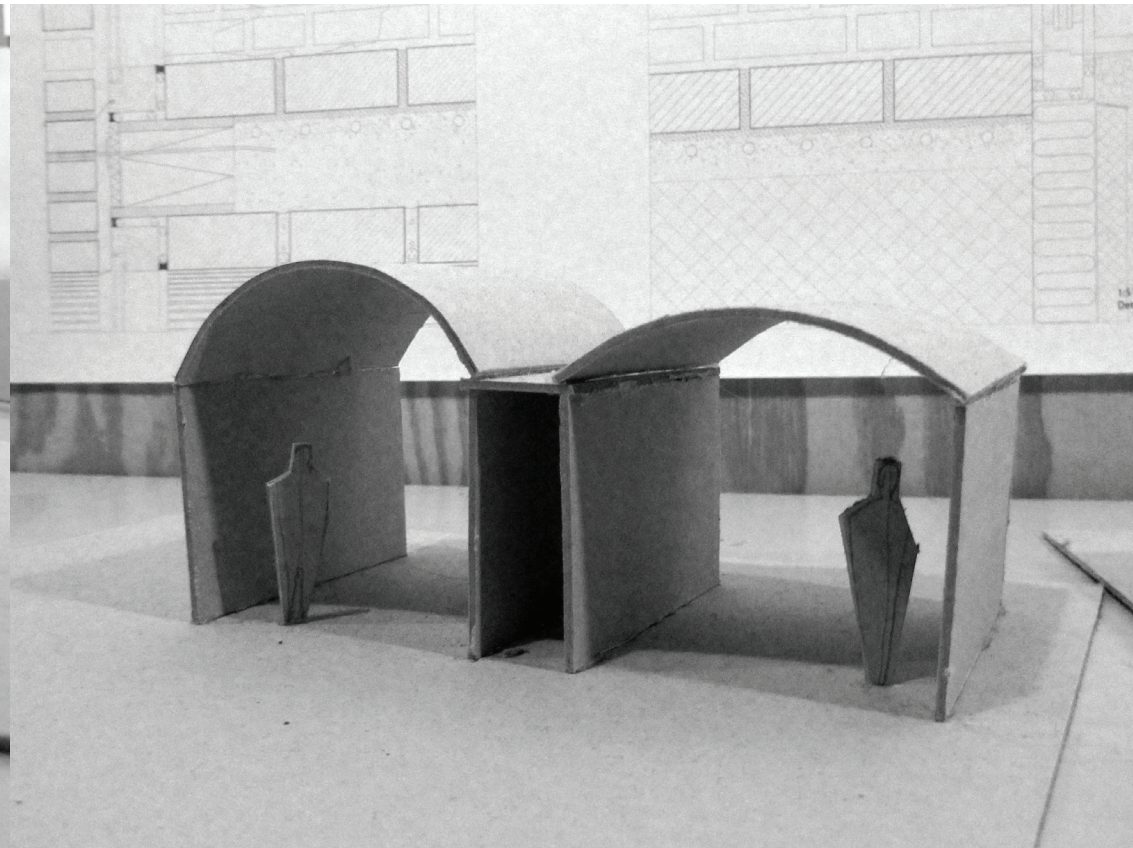
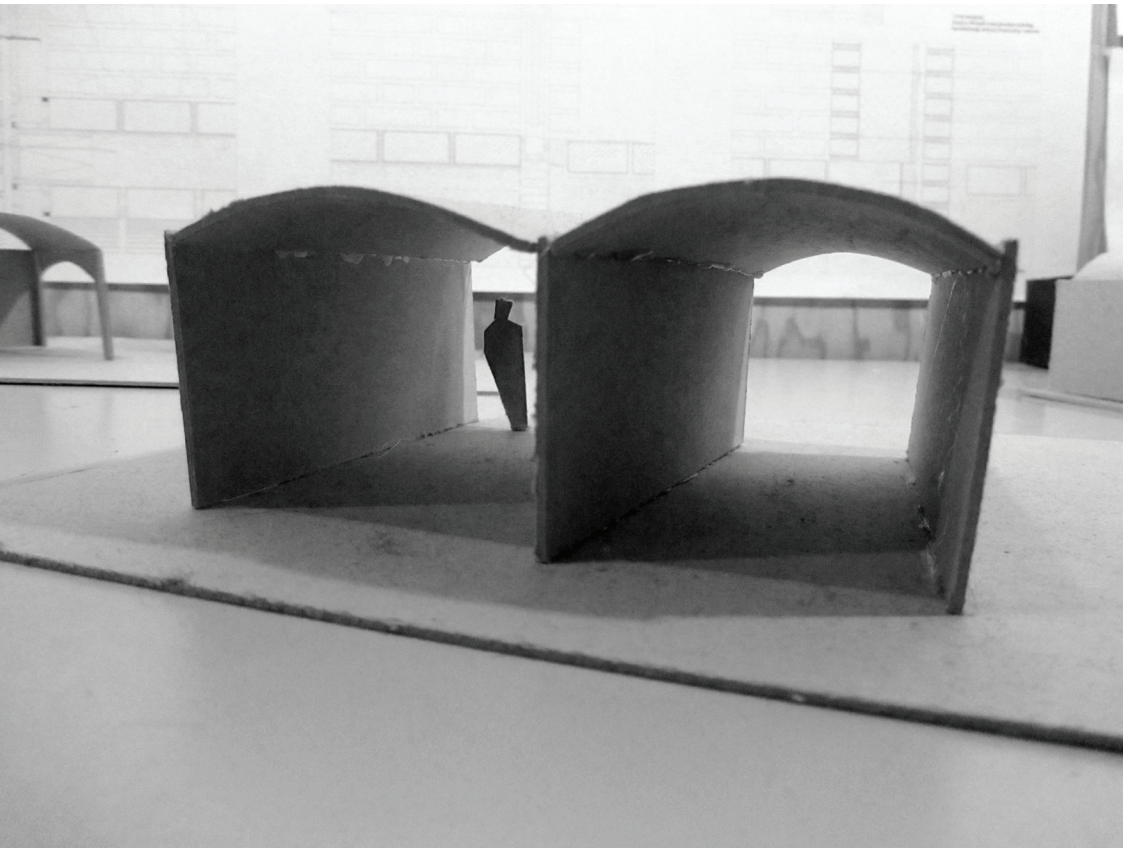


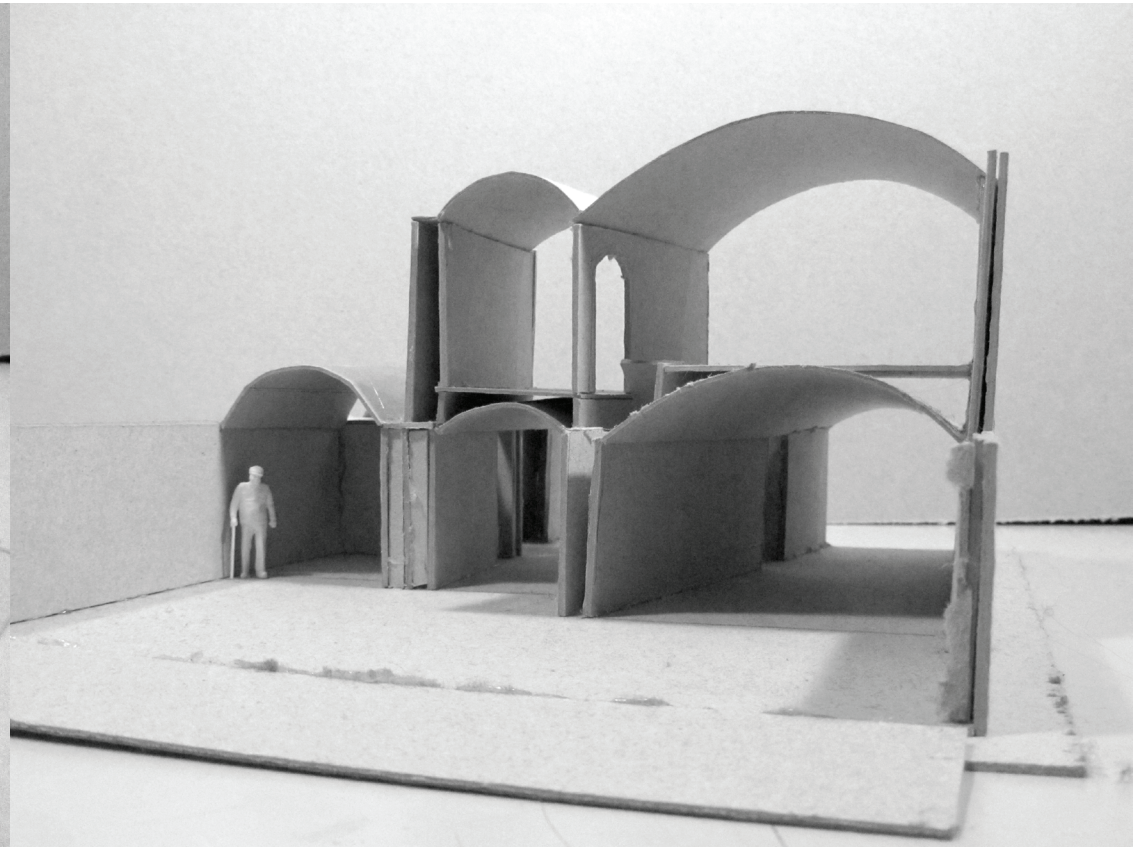
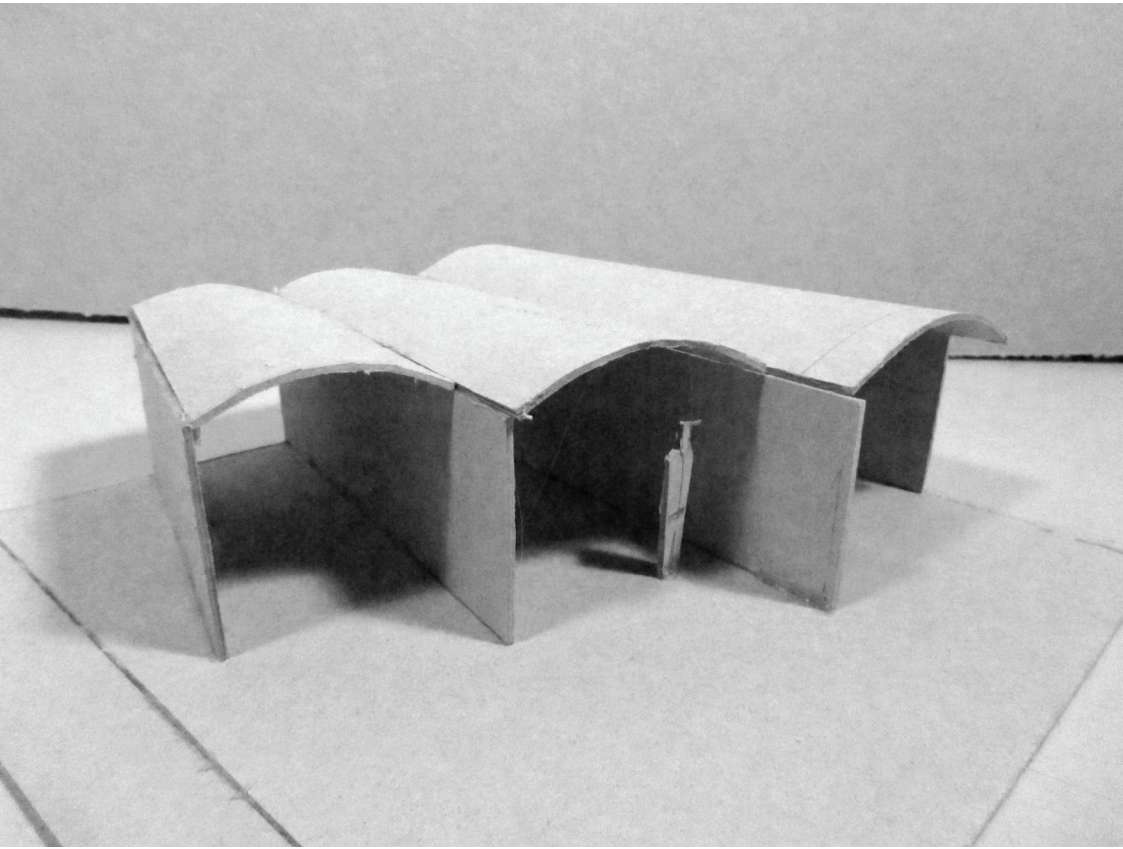
Fig. 7.21. Casa Dieste - bedroom.

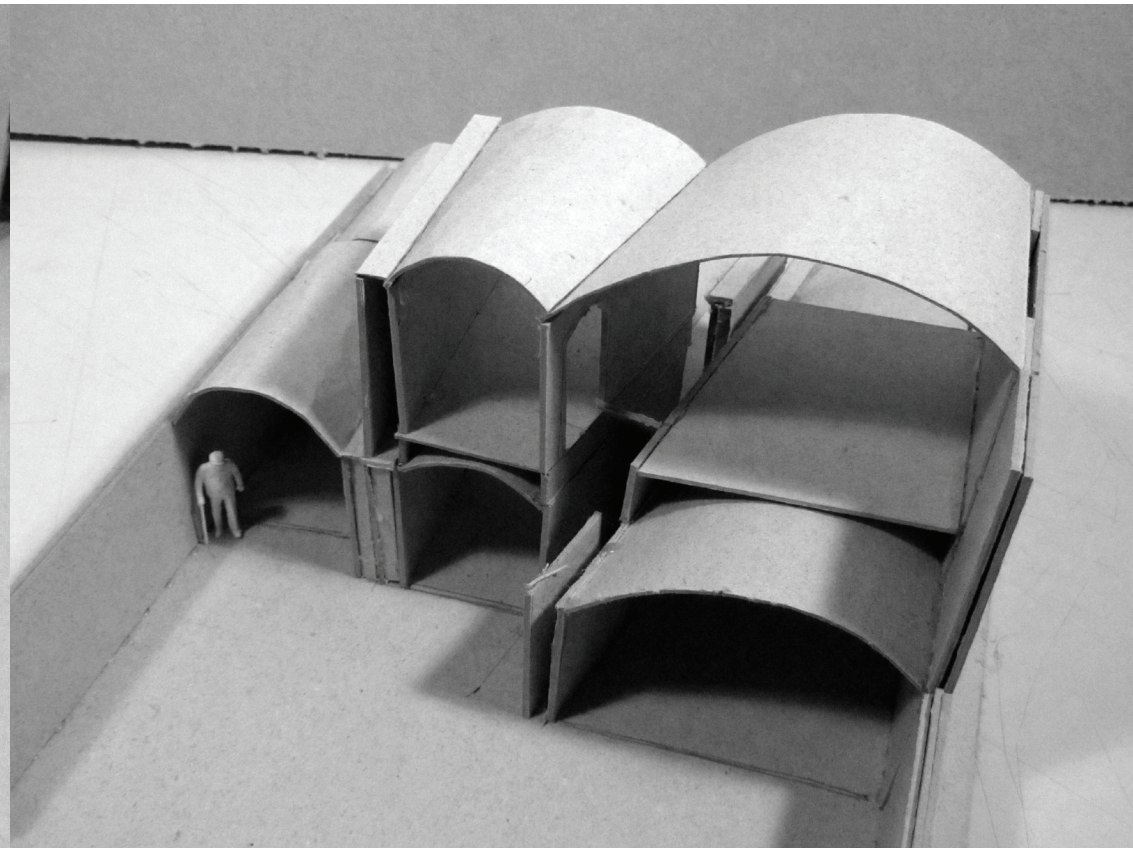
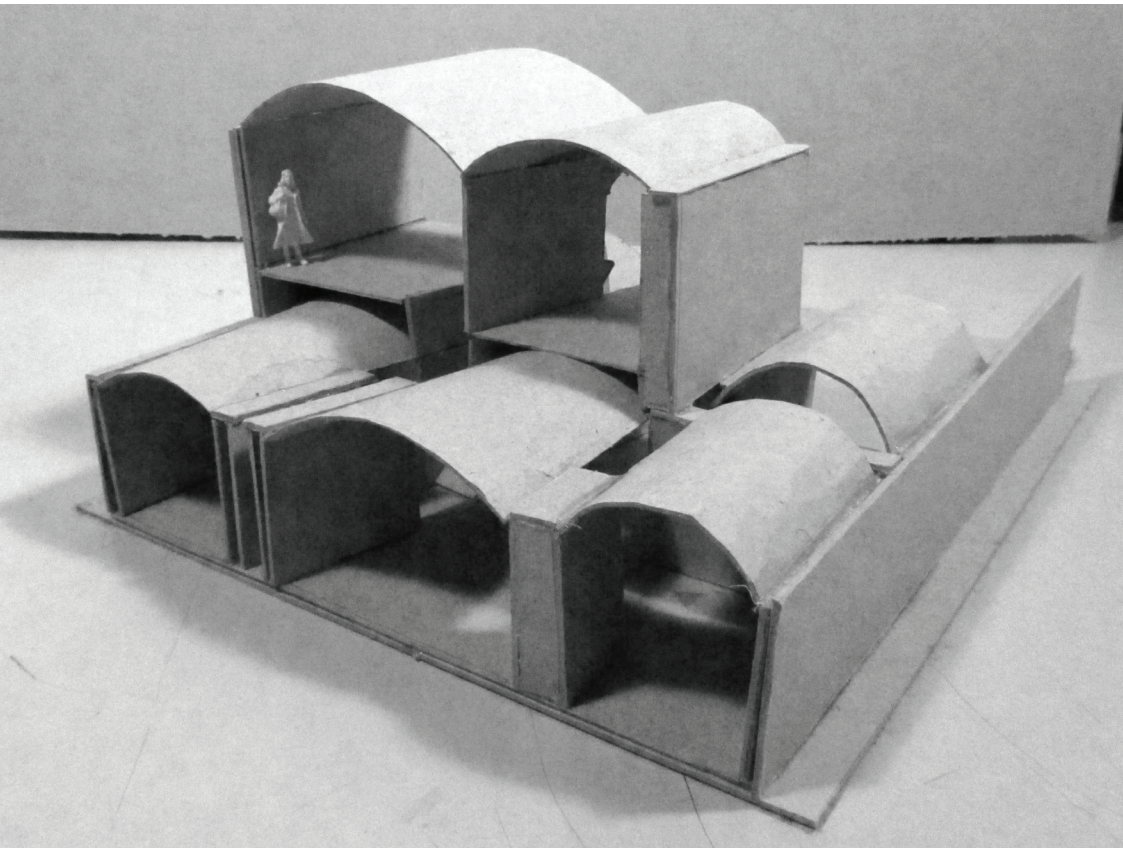


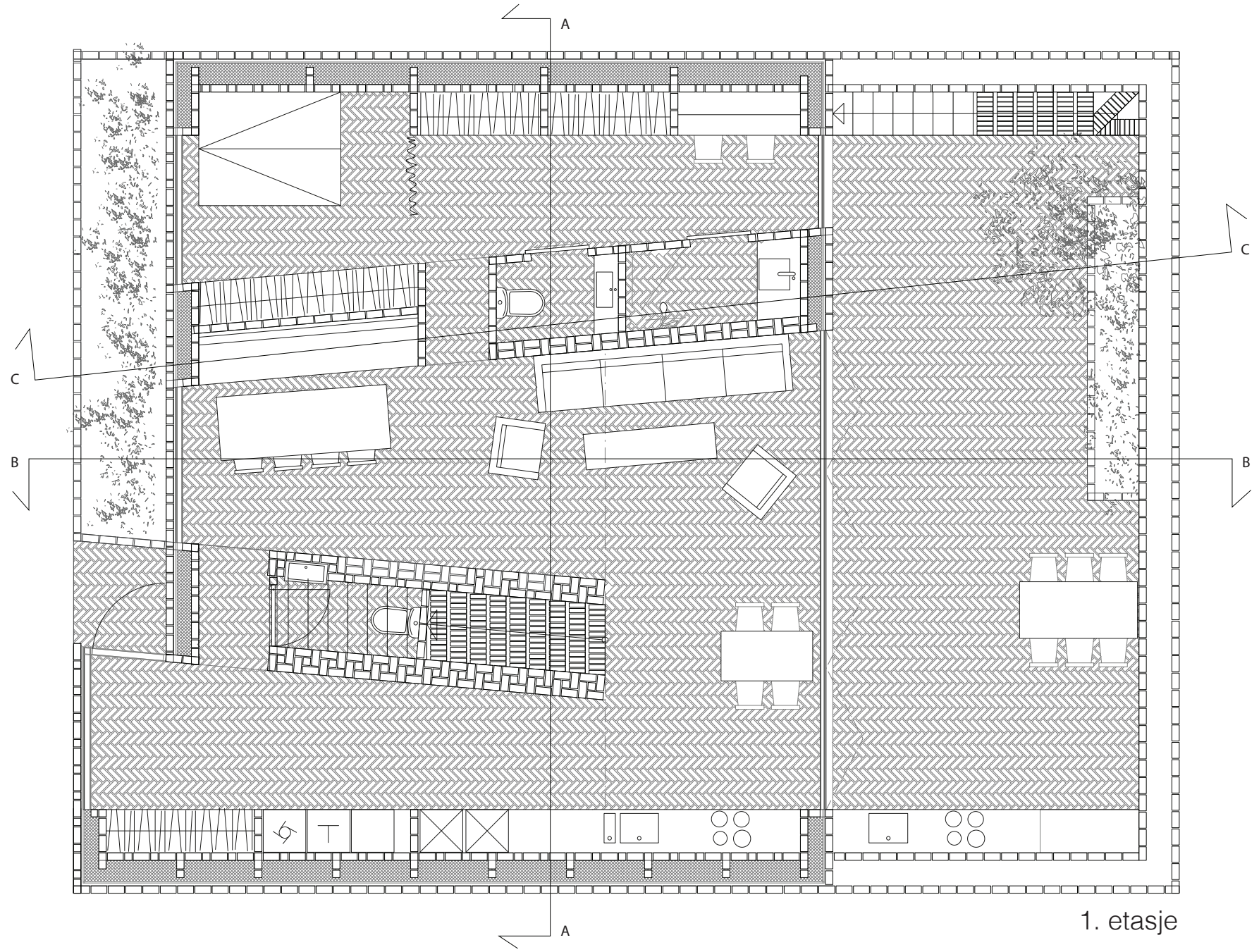
Fig. 7.22. Casa Dieste - enclosed courtyard.



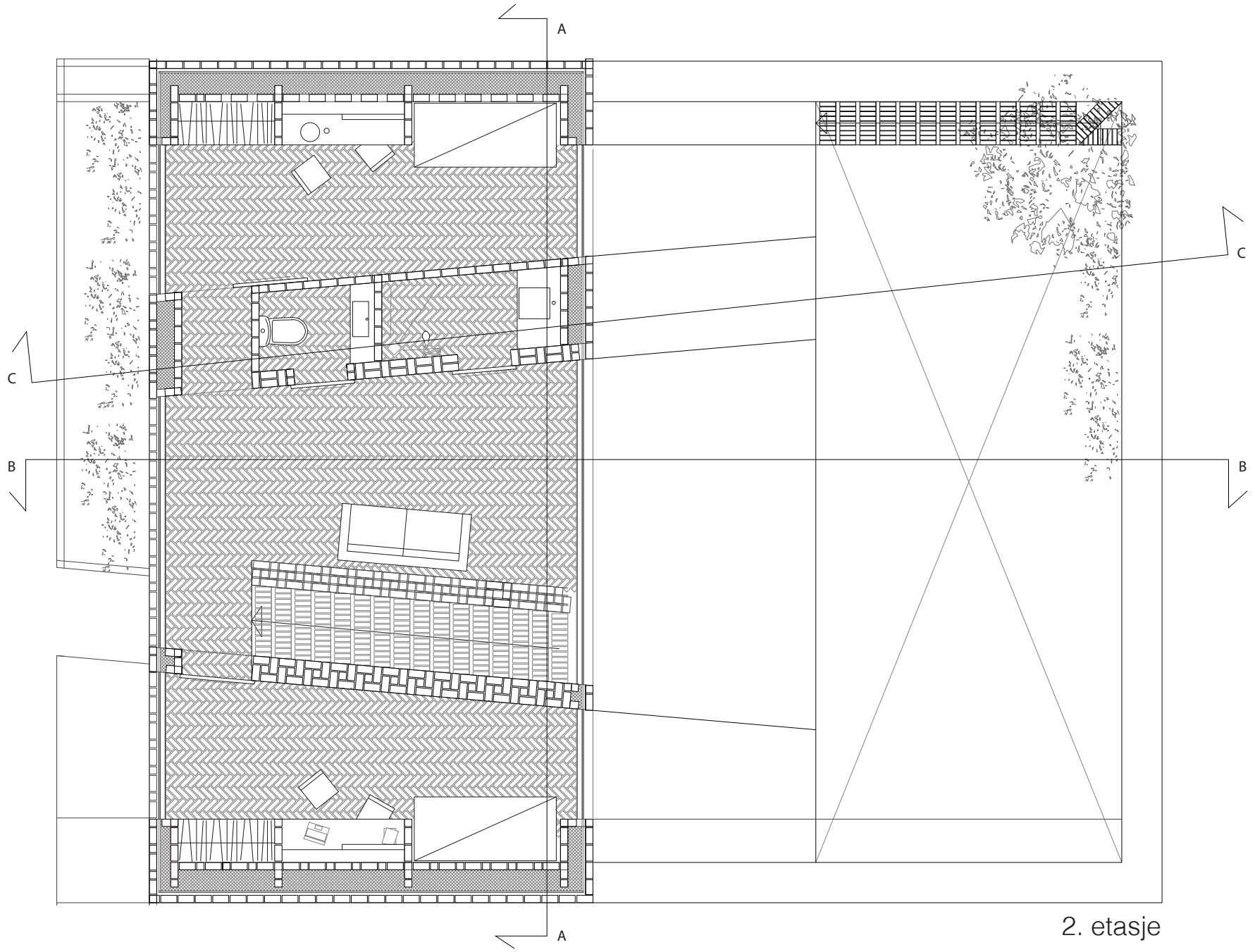




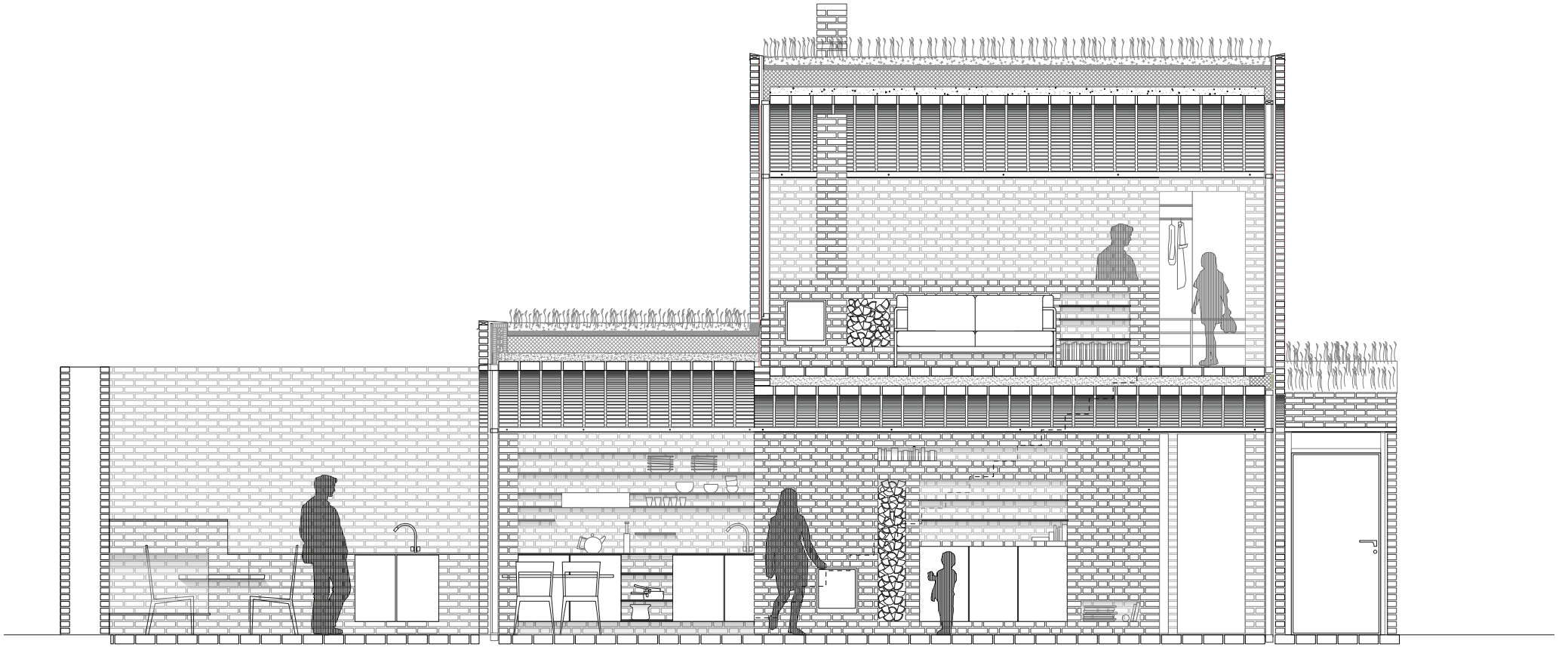




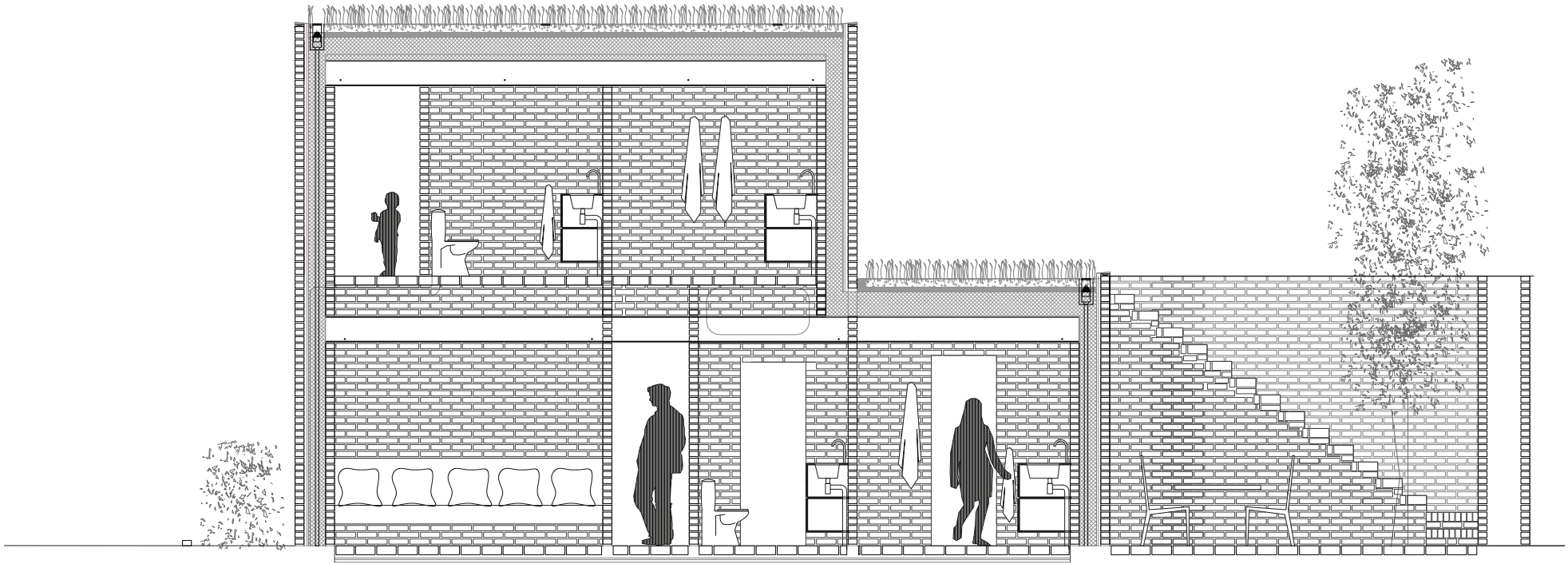
1. etasje



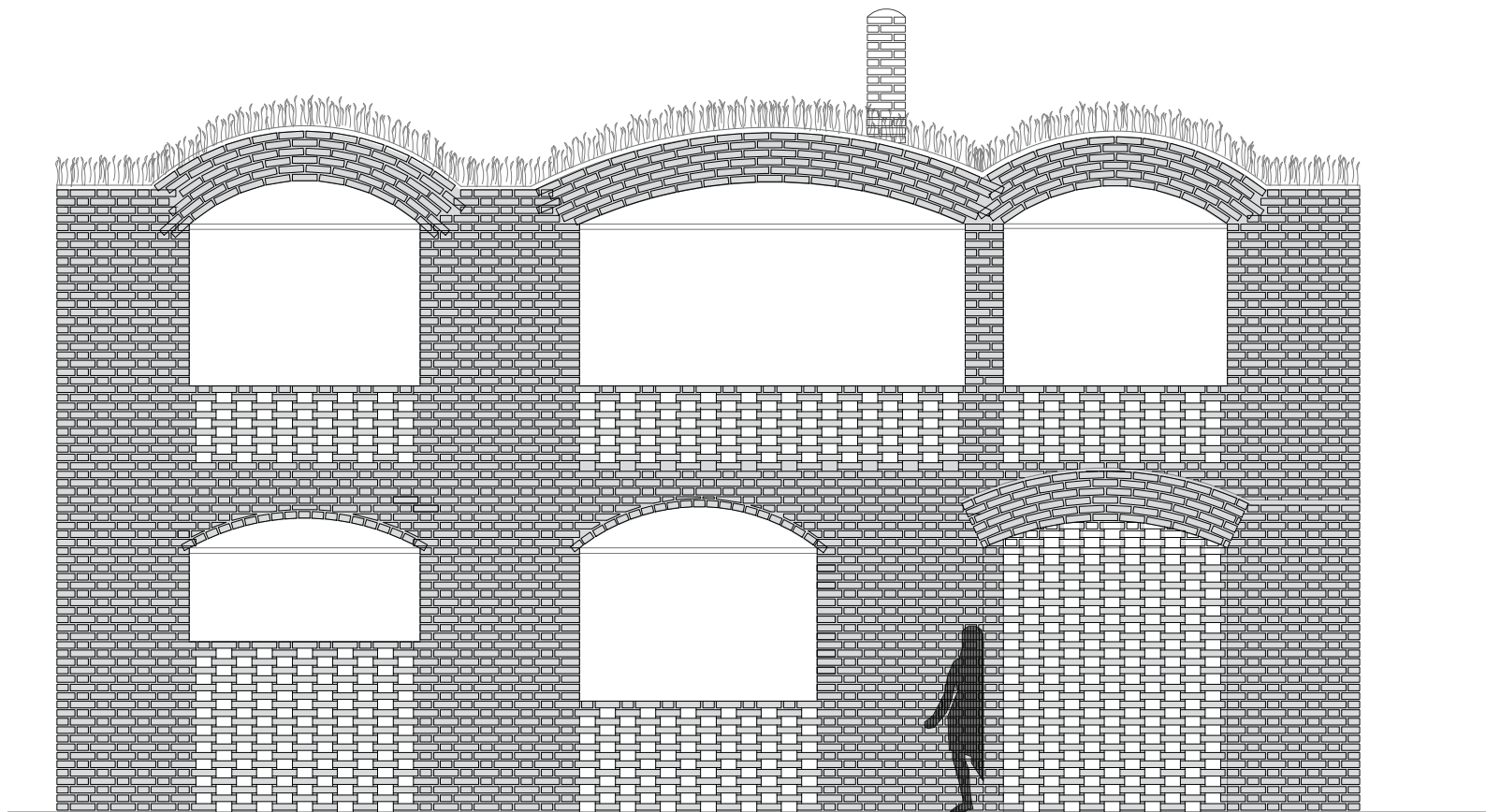
2. etasje



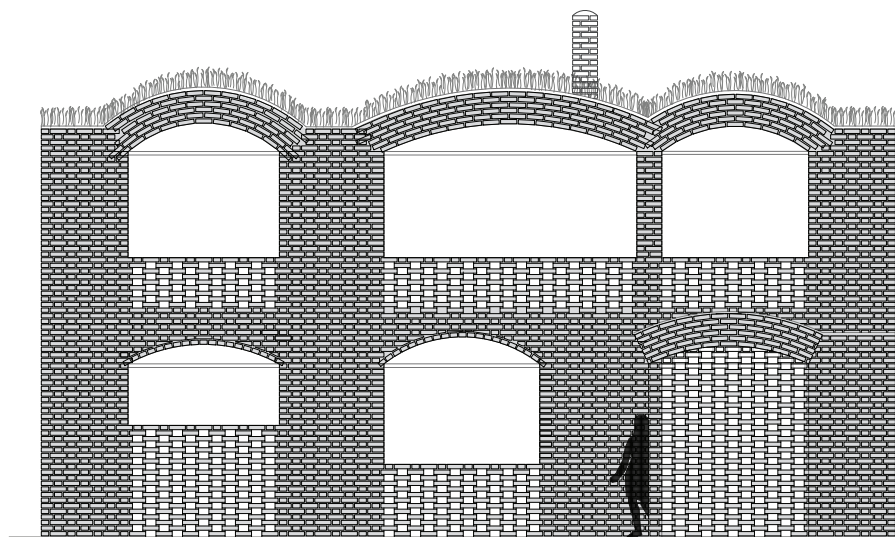
Snitt BB 1:50



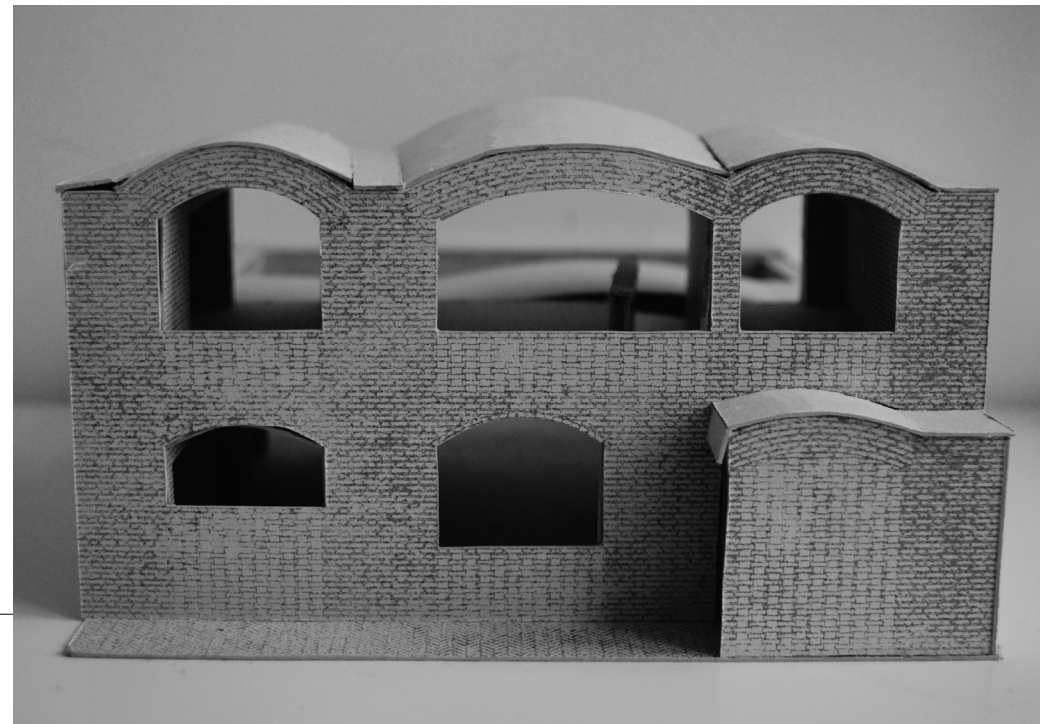
Snitt CC 1:50

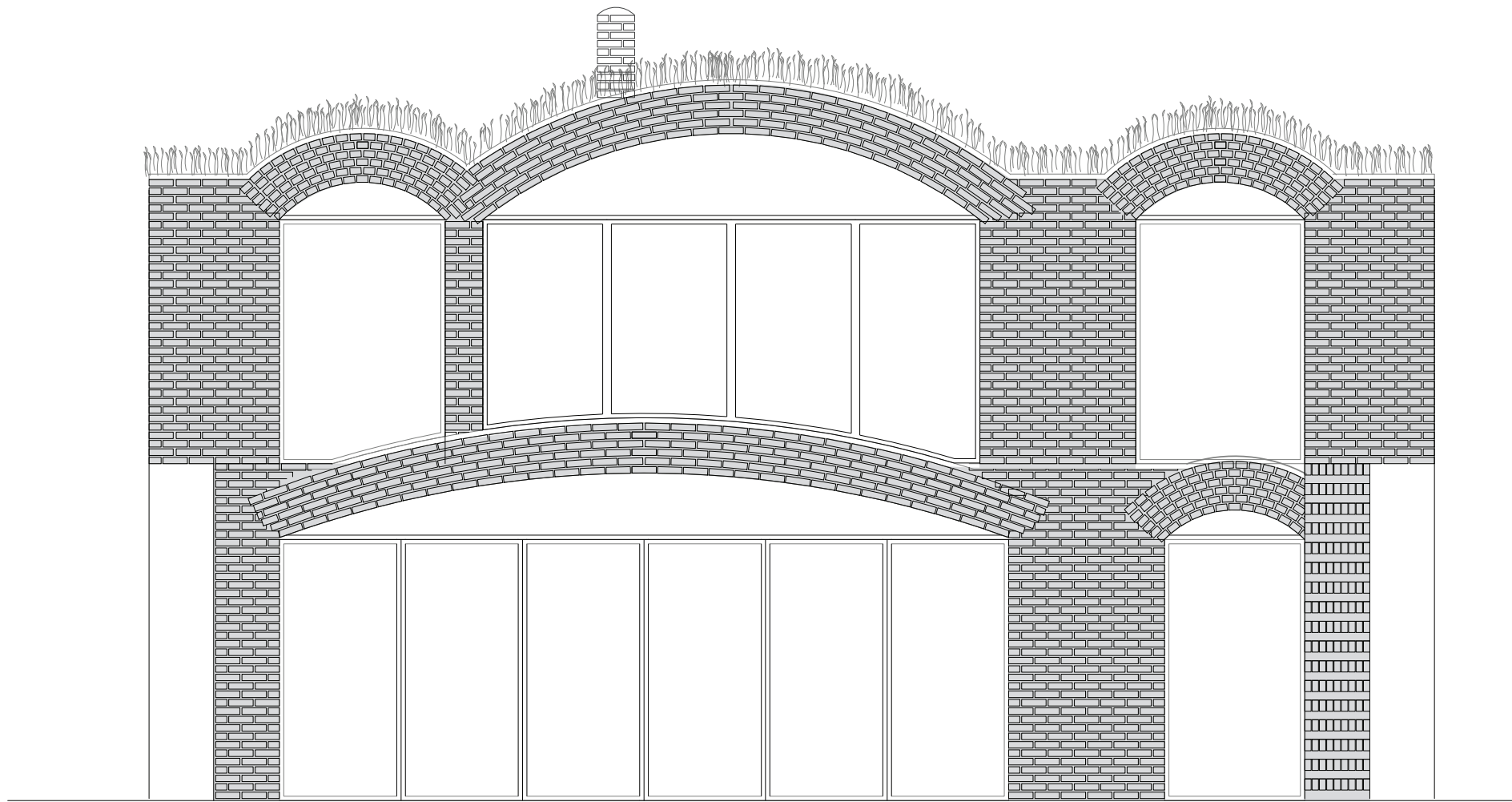


Fasade vest 1:50

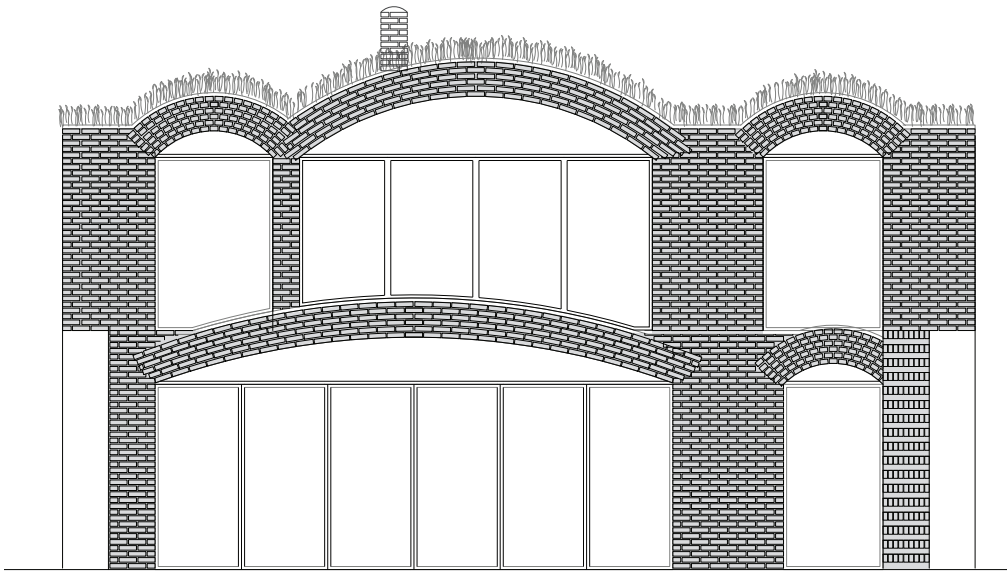


Fasade vest 1:50

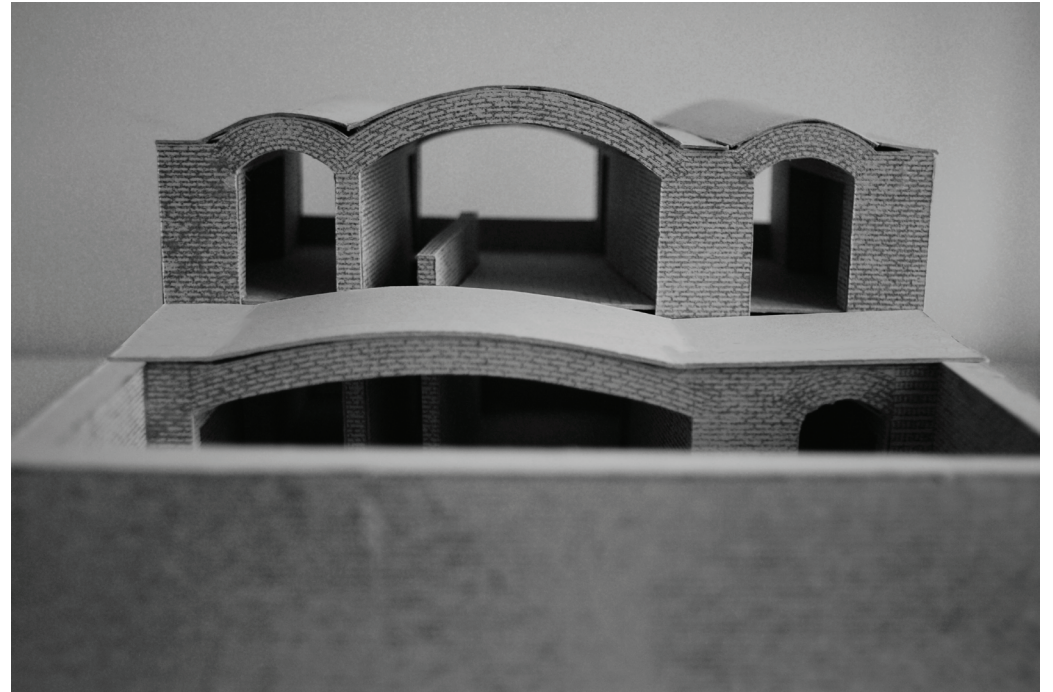




Fasade øst 1:50



Fasade øst 1:50





Snitt AA

