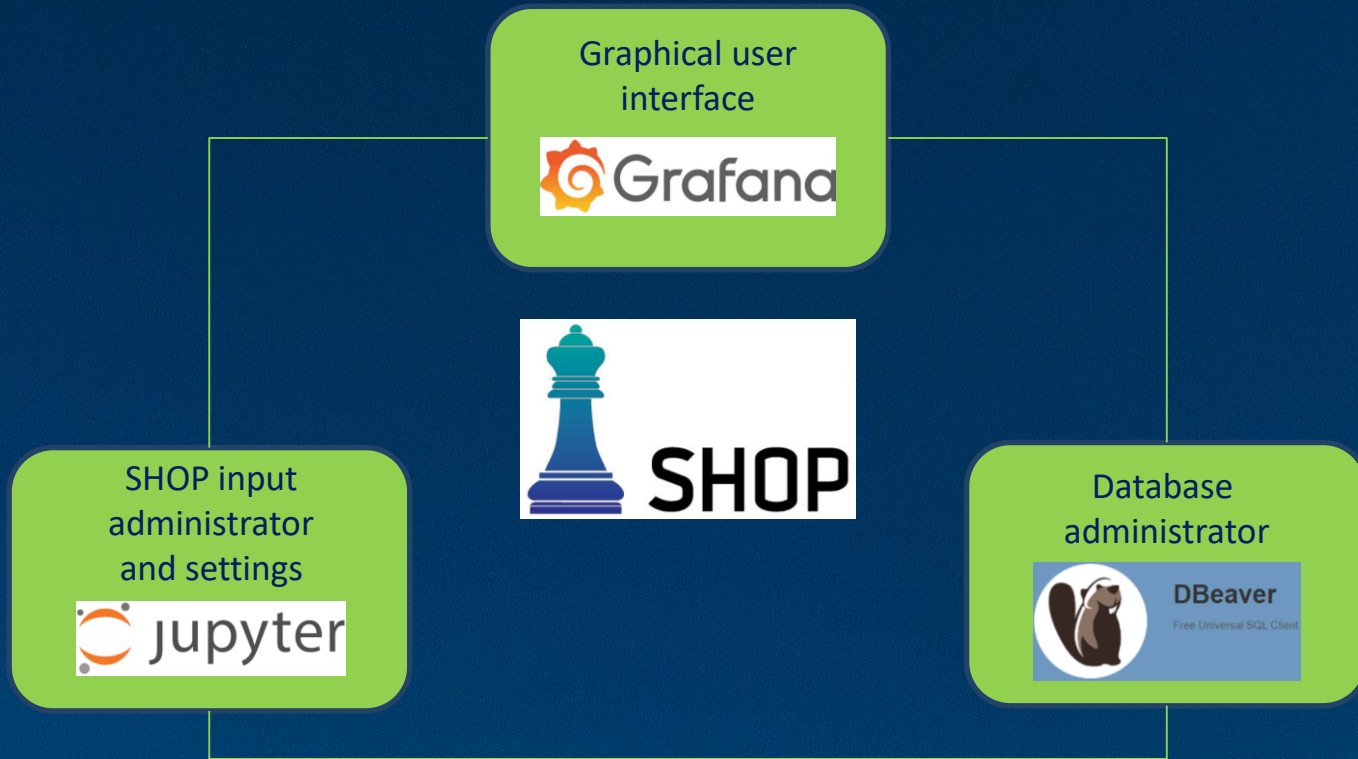


# Model calibration with new interface

14.03.2019 | **Tarjei Lid Riise**  
User Meeting Hydro Scheduling 2019

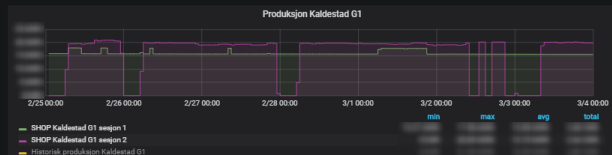
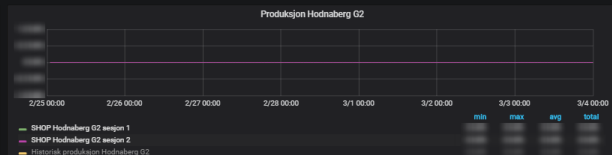
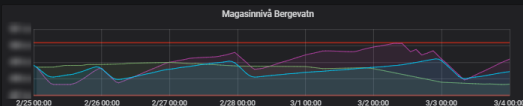
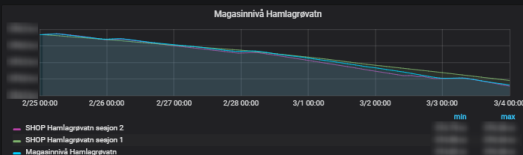
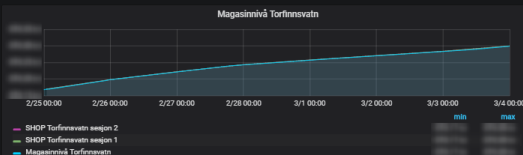
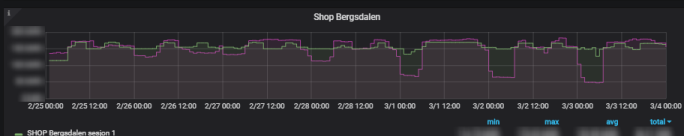
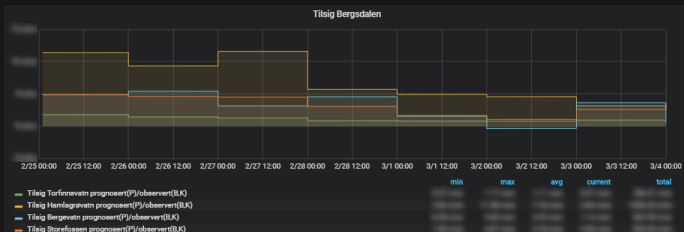
# SHOP has made new friends



Sesjon 2 259 (K) Bergsdalen 2019-03-05 09:25:15+01 ▾

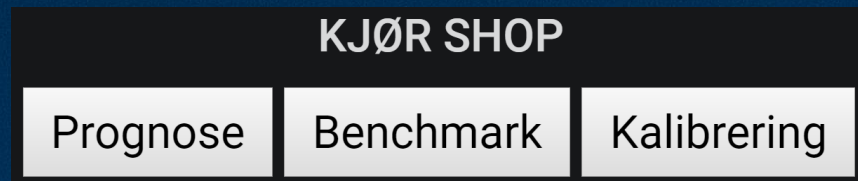
Prognose Benchmark Kalibrierung

Sesjon 1: Benchmark (Fri optimering med realisert spotpris og observert tilsig)      Sesjon 2: Kalibrering (Fastlåste historiske produksjonsplaner, realisert spotpris, observert tilsig)





# Three different «Run SHOP» buttons in Grafana



## Prognosis

Use the water values and forecasts to see how SHOP manage the water in the future

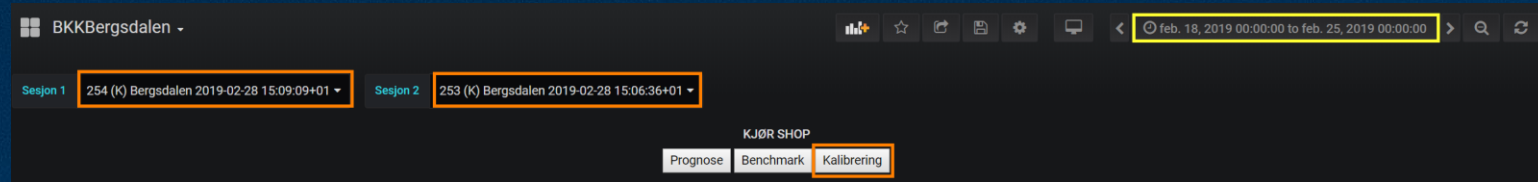
## Benchmark

See how SHOP manage the water in a previous time period with observed historical inflow and historical spot prices

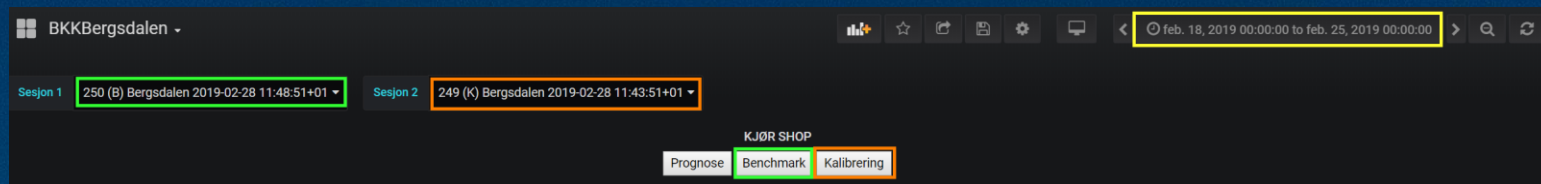
## Calibration

Run SHOP for a previous time period with historical production plans and observed historical inflow

# Run SHOP for a previous time period

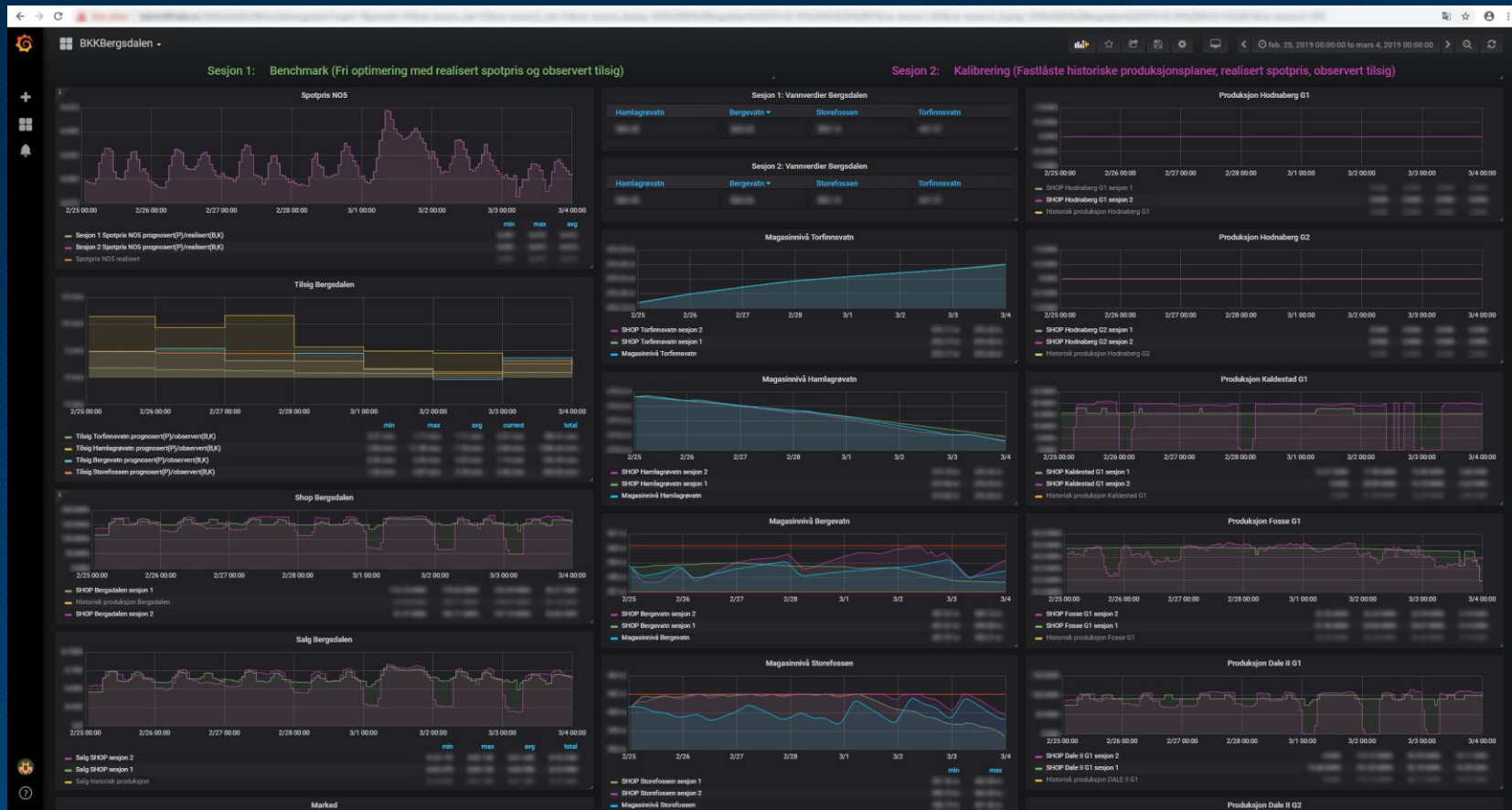


- Calibrate the SHOP model by comparing the SHOP Calibration results (e.g. discharge, head, pressure) with real life measurements and water management calculations
- See the effects of input changes by comparing two SHOP Calibration sessions



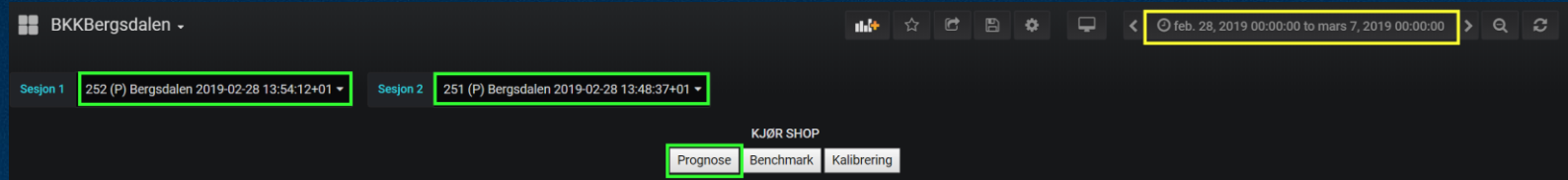
- Compare production, income and optimization objective numbers from SHOP Benchmark and SHOP Calibration

# SHOP Benchmark and SHOP Calibration



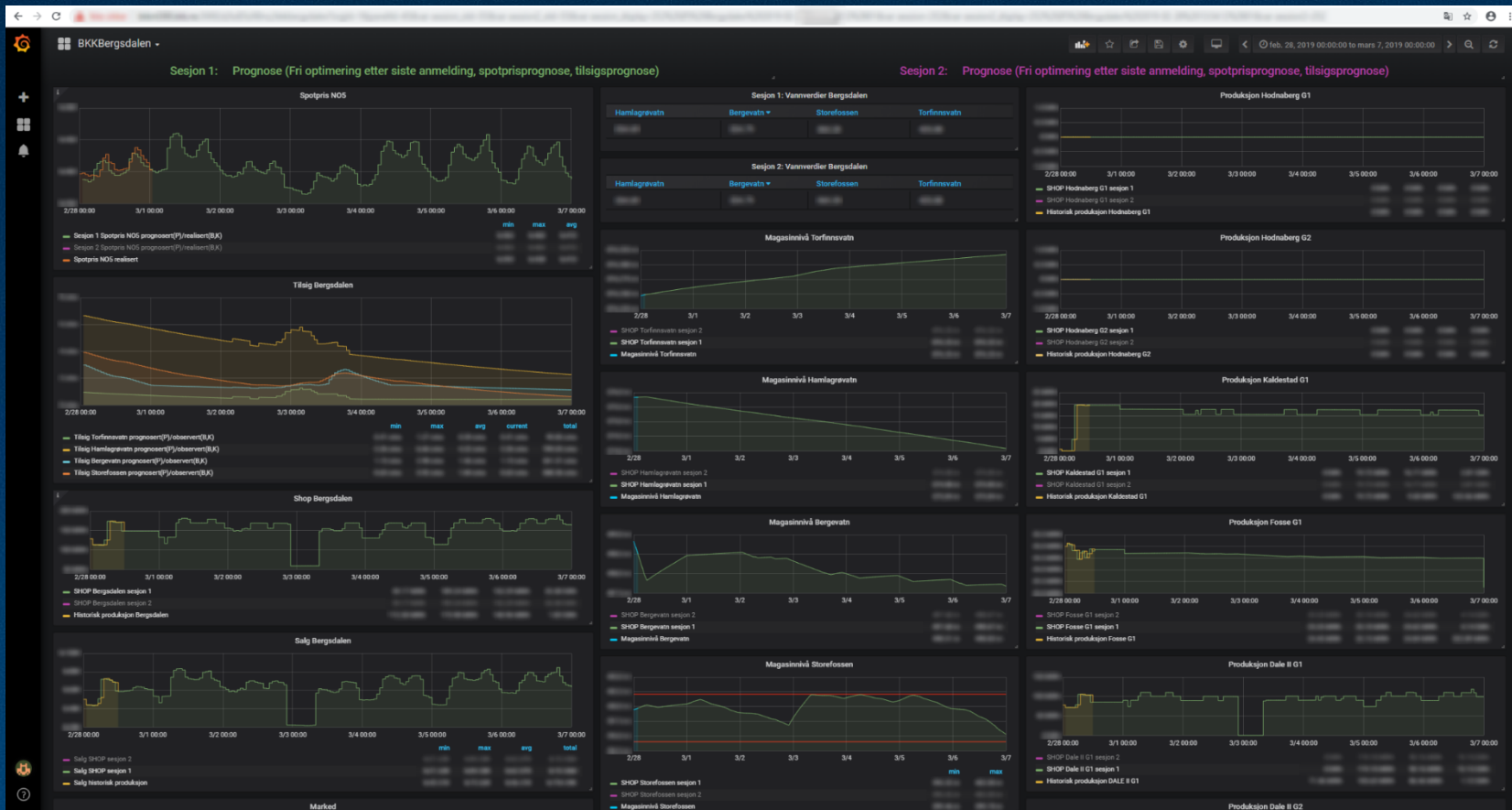


# Run SHOP forward in time



- Use the water values and forecasts to see how SHOP manage the water in the future
- Perform consequence analyzes to see the effects of
  - changed inflow
  - higher/lower prices
  - desirable reservoir head at a given time
  - desirable production pattern
  - availability changes

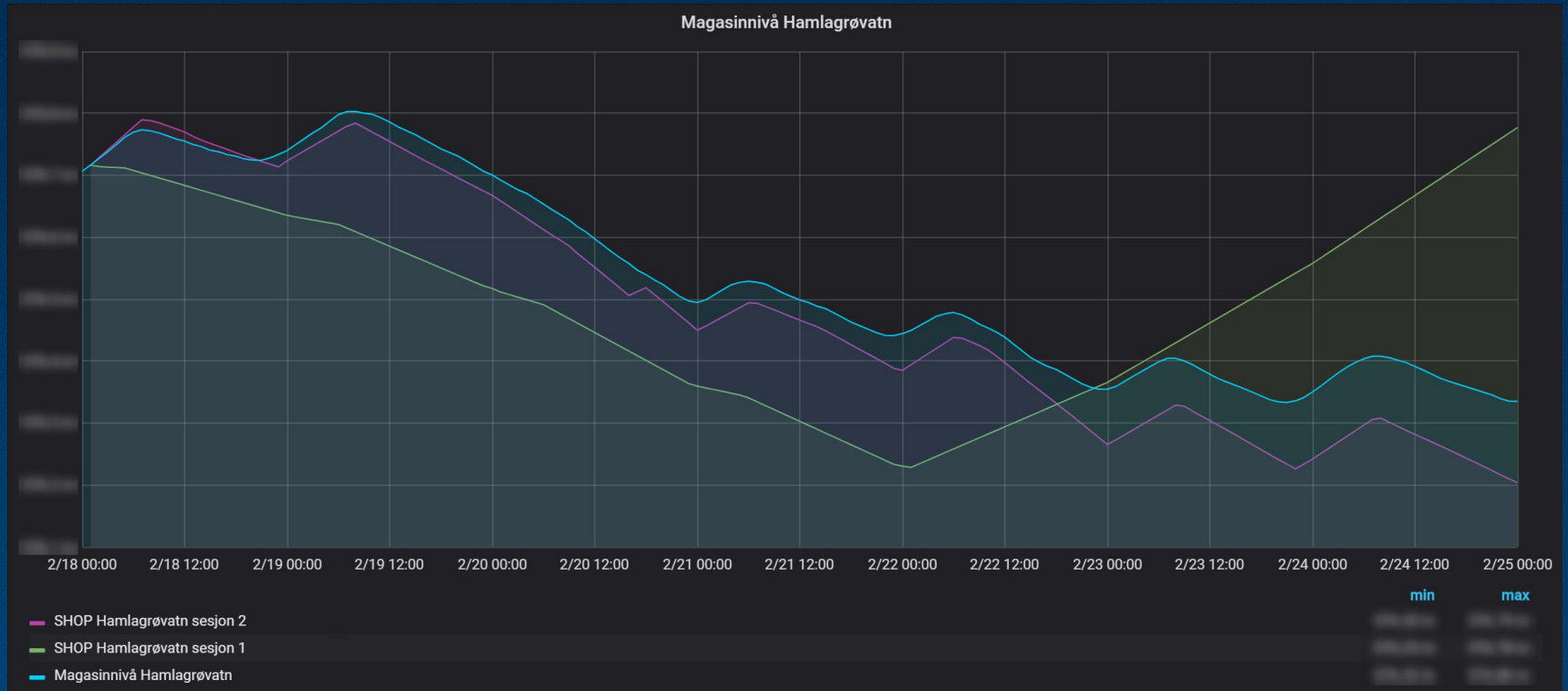
# SHOP Prognosis





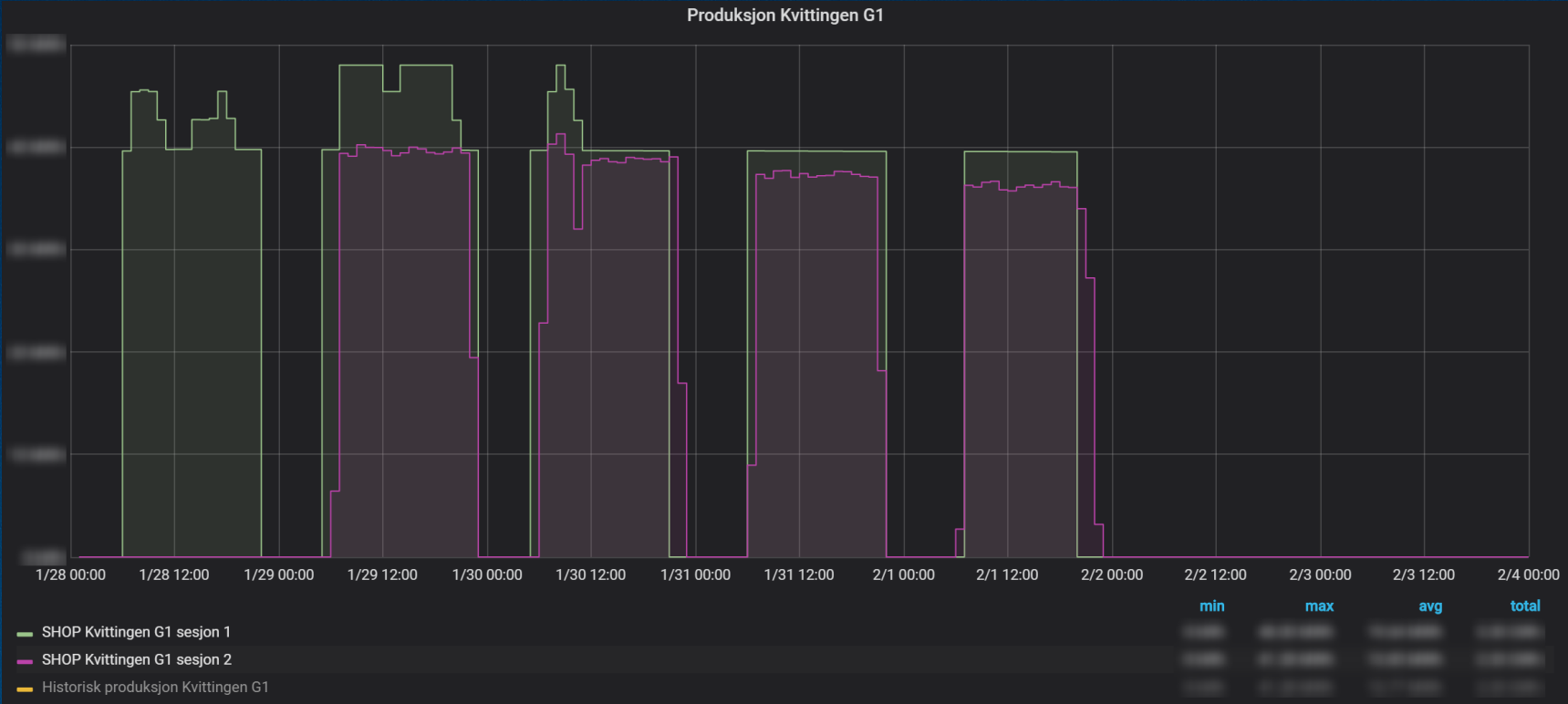
# Example 1

Comparison of reservoir head from **SHOP Benchmark**,  
**SHOP Calibration** and water management calculations



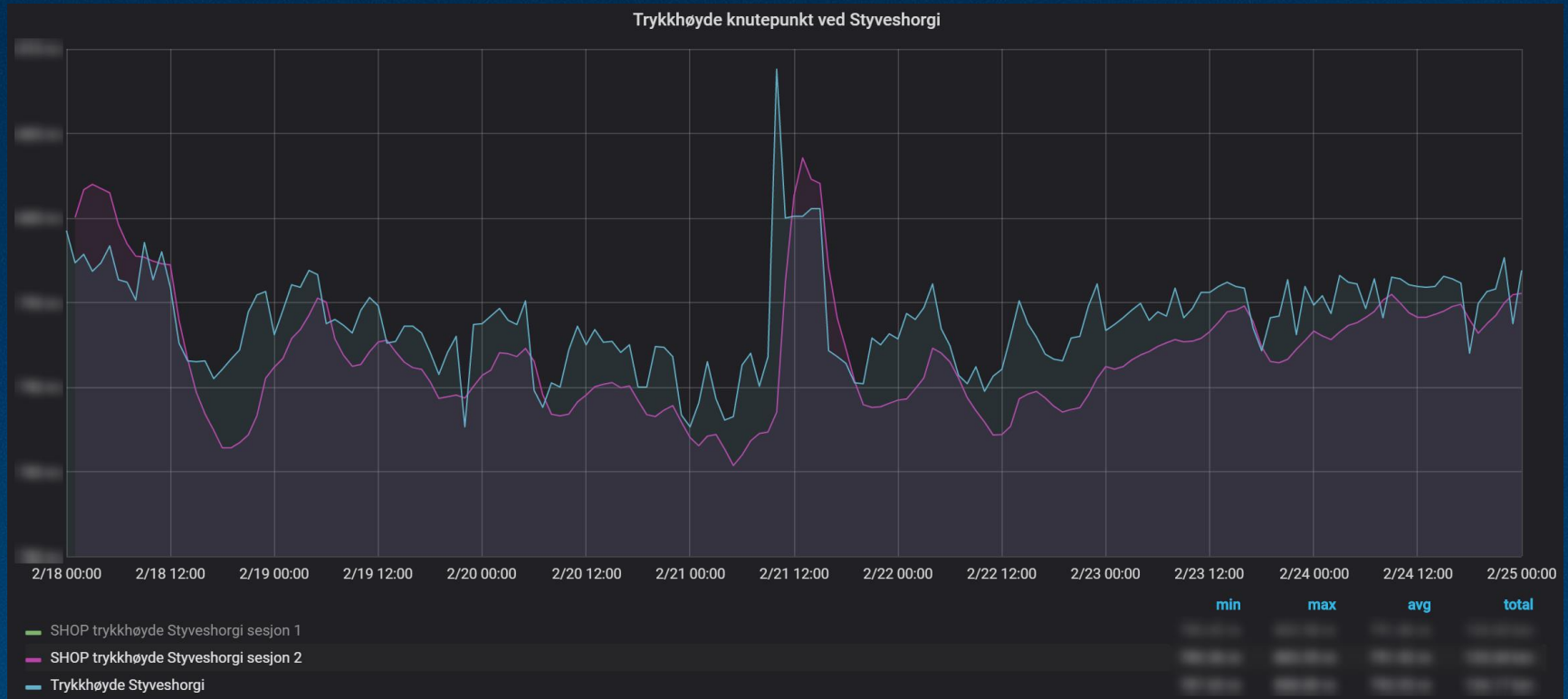
# Example 2

Comparison of production from **SHOP Benchmark** and **SHOP Calibration**



## Example 3 (1)

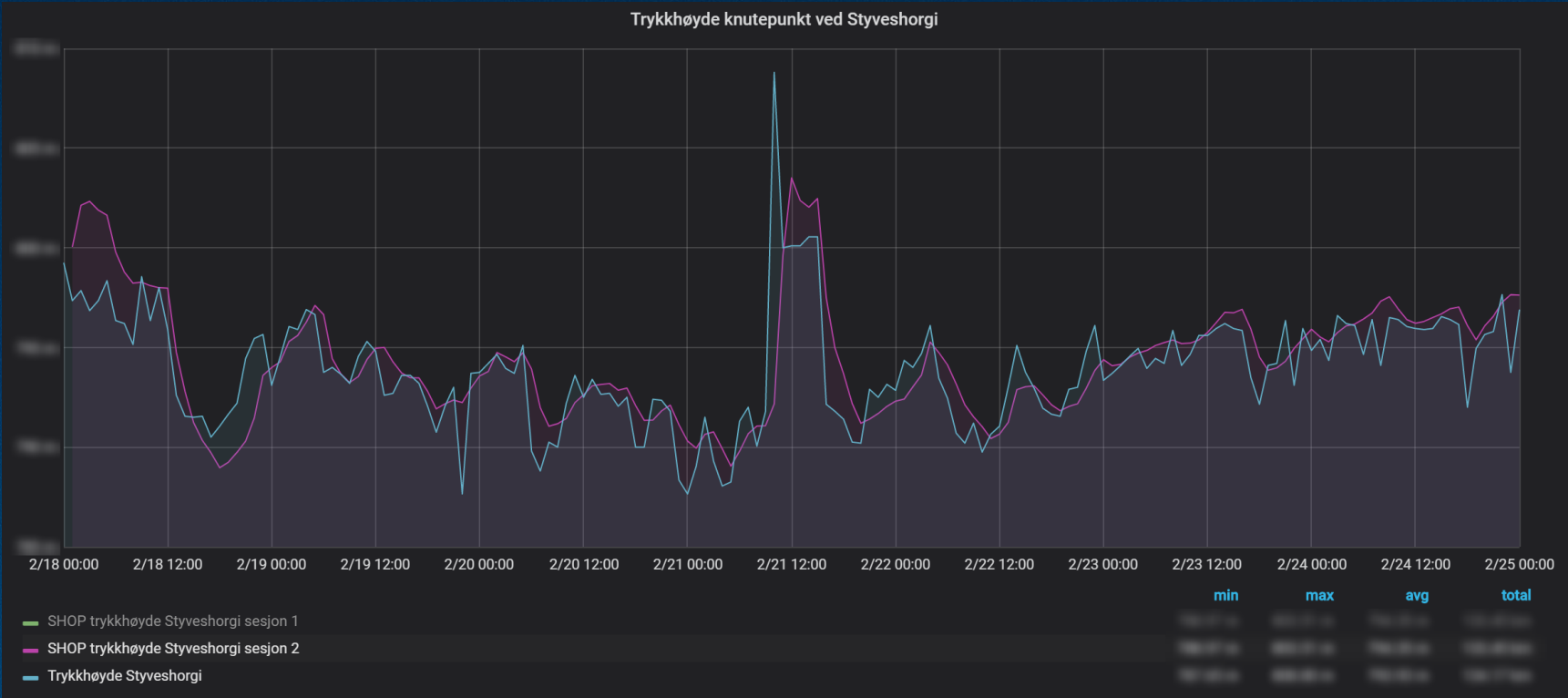
Comparison of **Junction Pressure Height from SHOP Calibration** and real life pressure measurement from SCADA



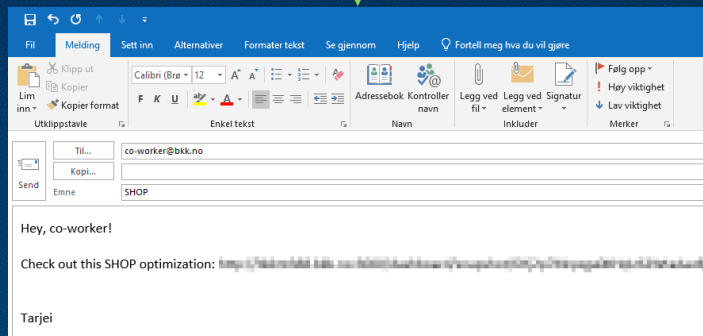
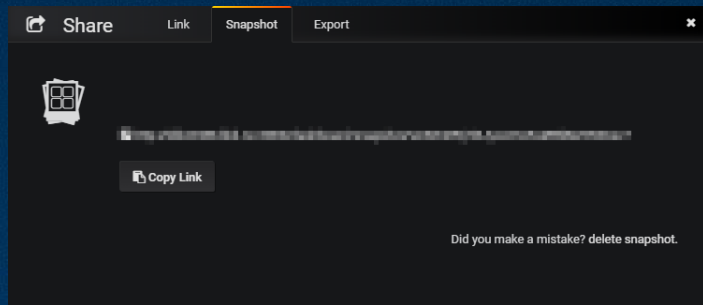


# Example 3 (2)

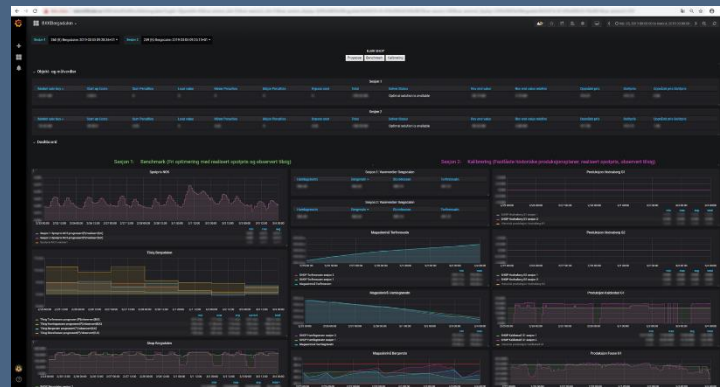
Comparison of Junction Pressure Height from SHOP Calibration and  
real life pressure measurement from SCADA



# Share and discuss SHOP results with Grafana snapshot URLs



Co-worker's PC



My co-worker doesn't need a Grafana user to see the results!

# API = Digitalization?

- The SHOP API offers good cooperation conditions between business and IT internally in BKK
- More and more companies are starting to offer APIs which can interact with each other  
e.g. `shop.objects.reservoir.rsv1.attributes.inflow = Tss(Tims key)`
- APIs provide opportunities for automation and flexible self-made interfaces (which hopefully suits future needs)
- Working with APIs brings new experiences and ideas which generates new digitalization projects



Thank you for your attention!