

SHOPSIM

Experiences with SHOP-based simulator

Hans Ivar Skjelbred

SINTEF Energy Research

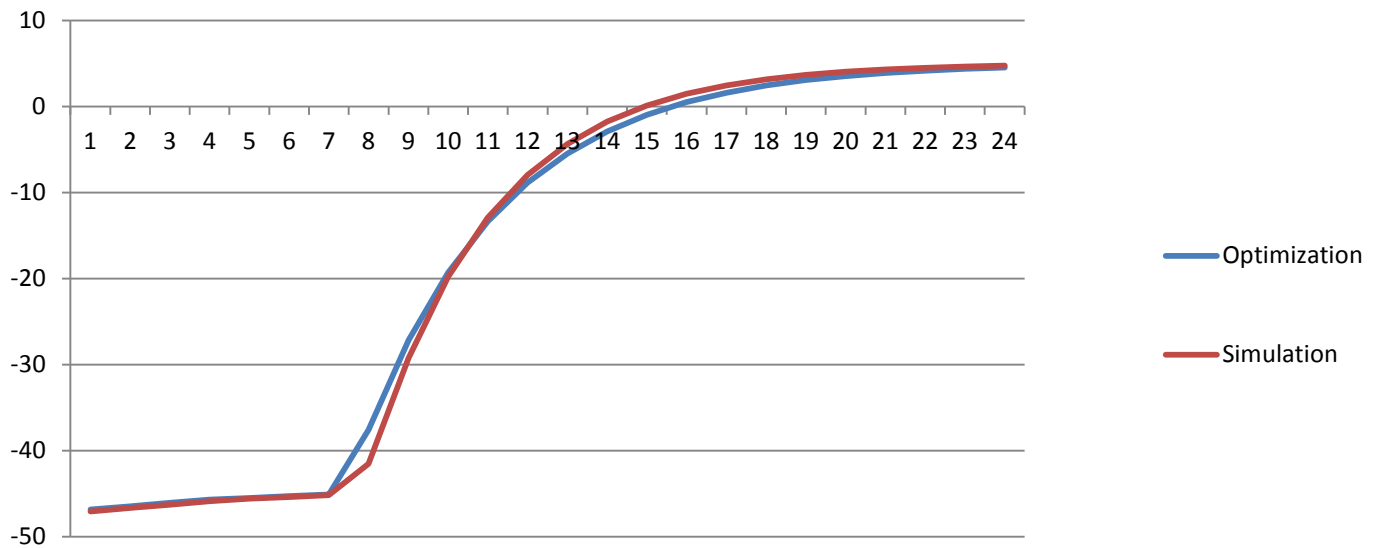
Users' meeting in Power Scheduling

20-21 May 2015, Trondheim

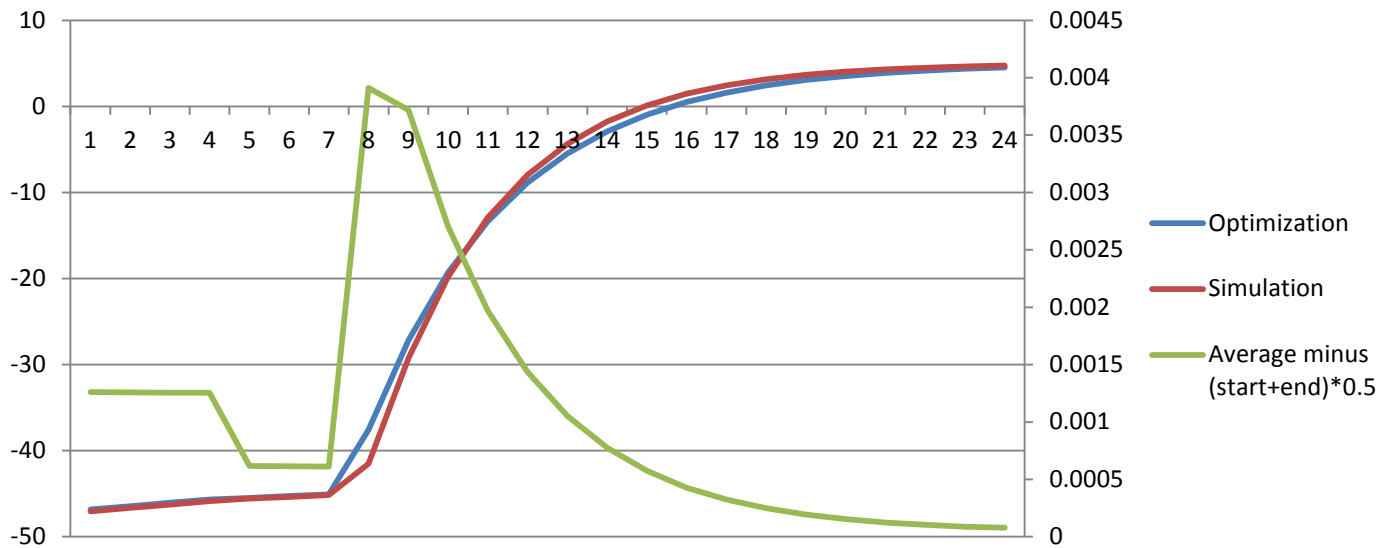
Simulation

- New commands in SHOP
 - `save optres_for_shopsim`
 - `start shopsim`
 - `return shopsimres`
- Pure simulator with warnings if results are inconsistent
 - If discharge is scheduled from an empty reservoir
 - If there is inflow or discharge into a full reservoir without overflow possibilities
 - If the schedule of a generator results in a flow above maximum from the turbine efficiency curves

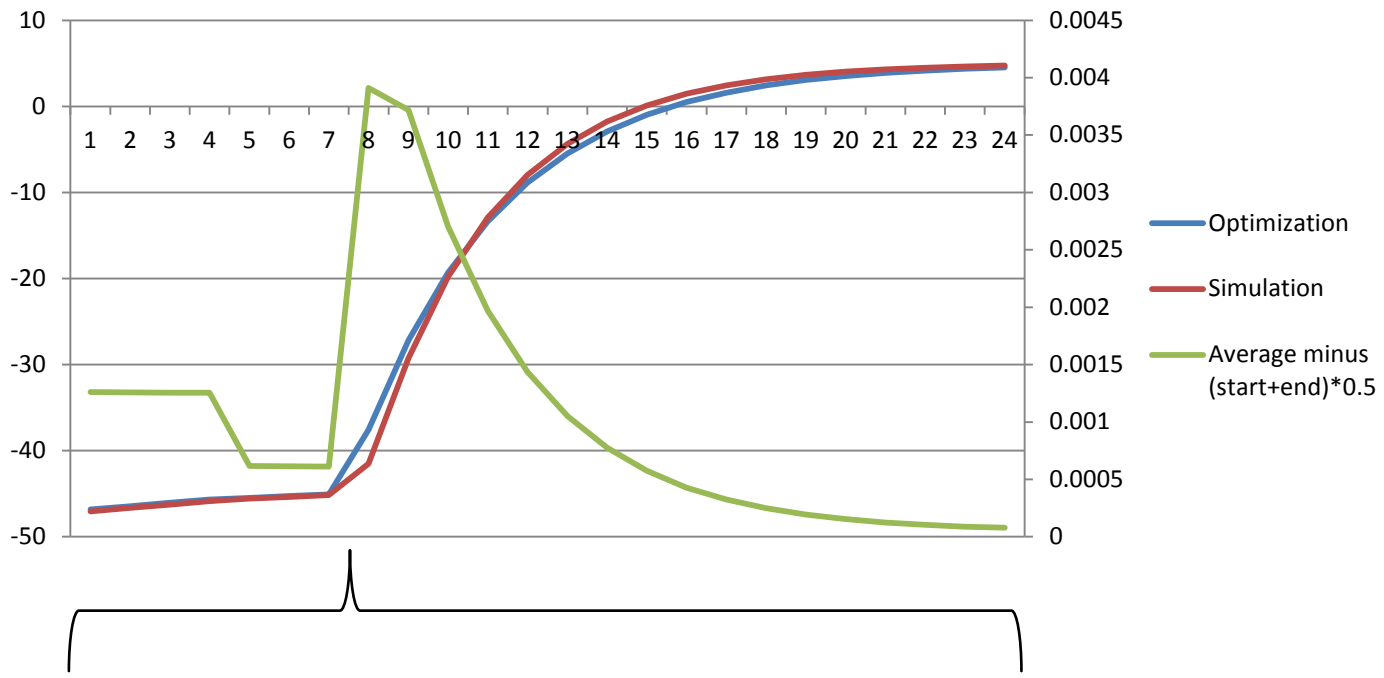
Optimization vs Simulation: Flow in deltameter



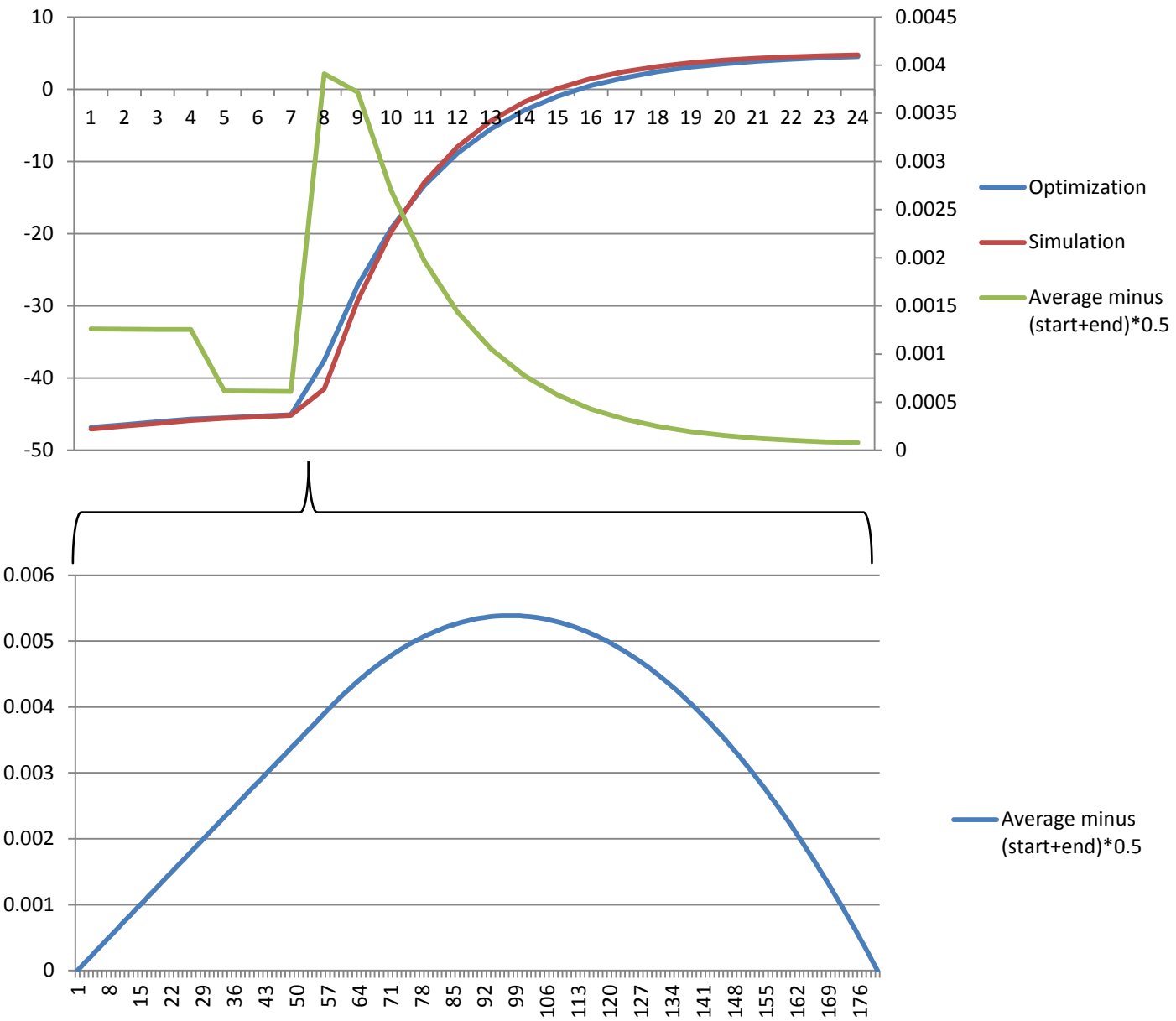
Optimization vs Simulation: Flow in deltameter



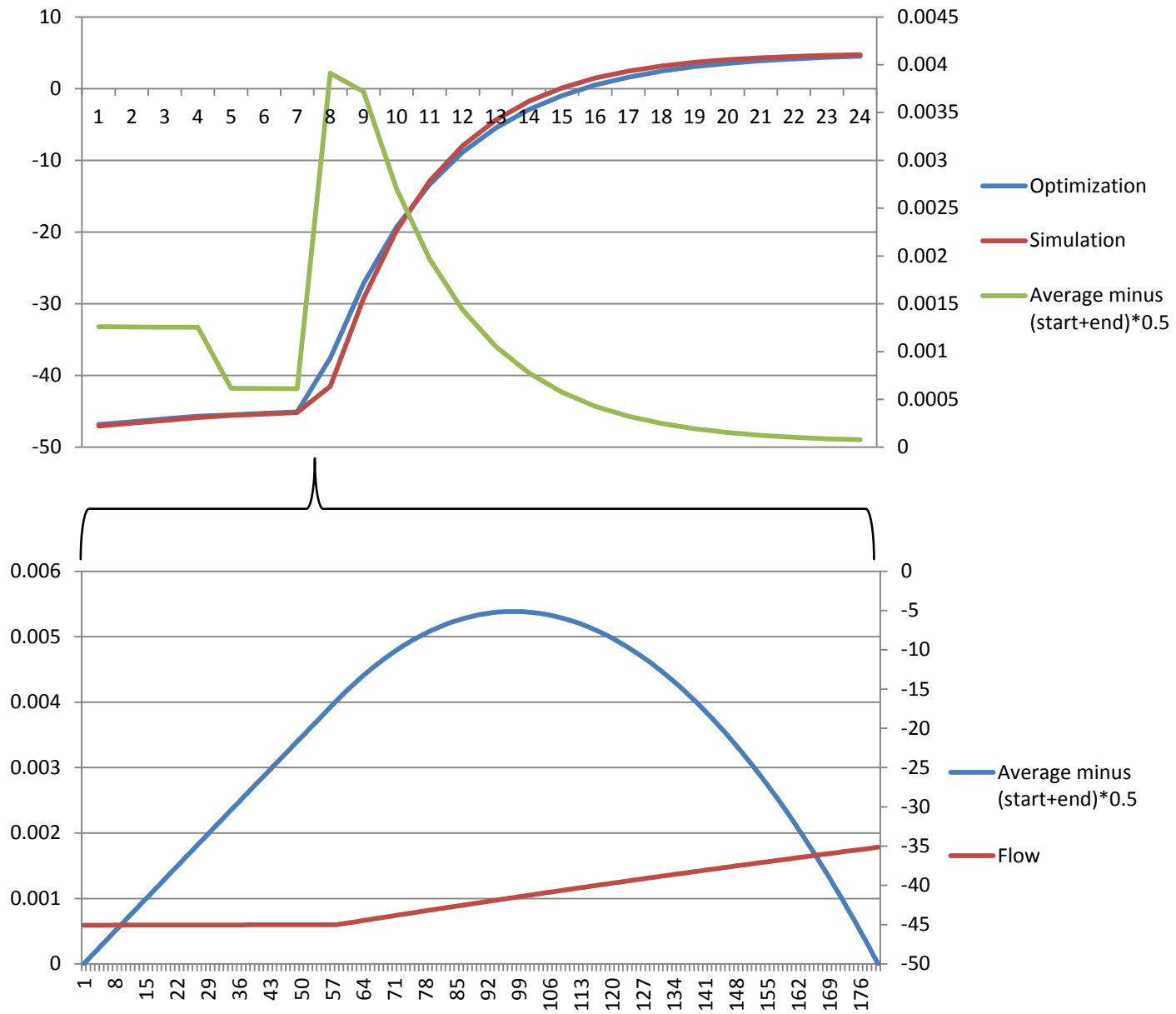
Optimization vs Simulation: Flow in deltameter



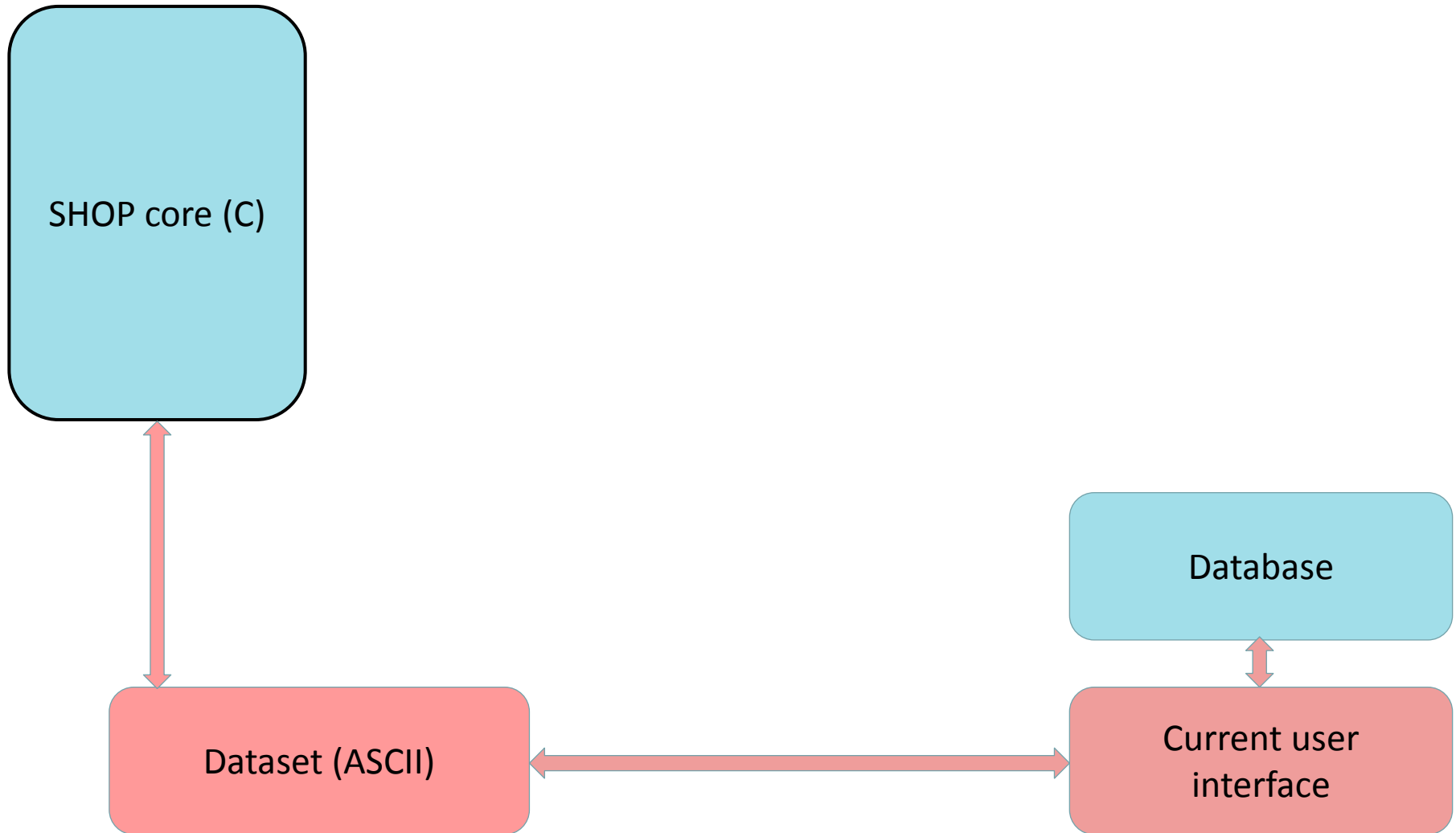
Optimization vs Simulation: Flow in deltameter



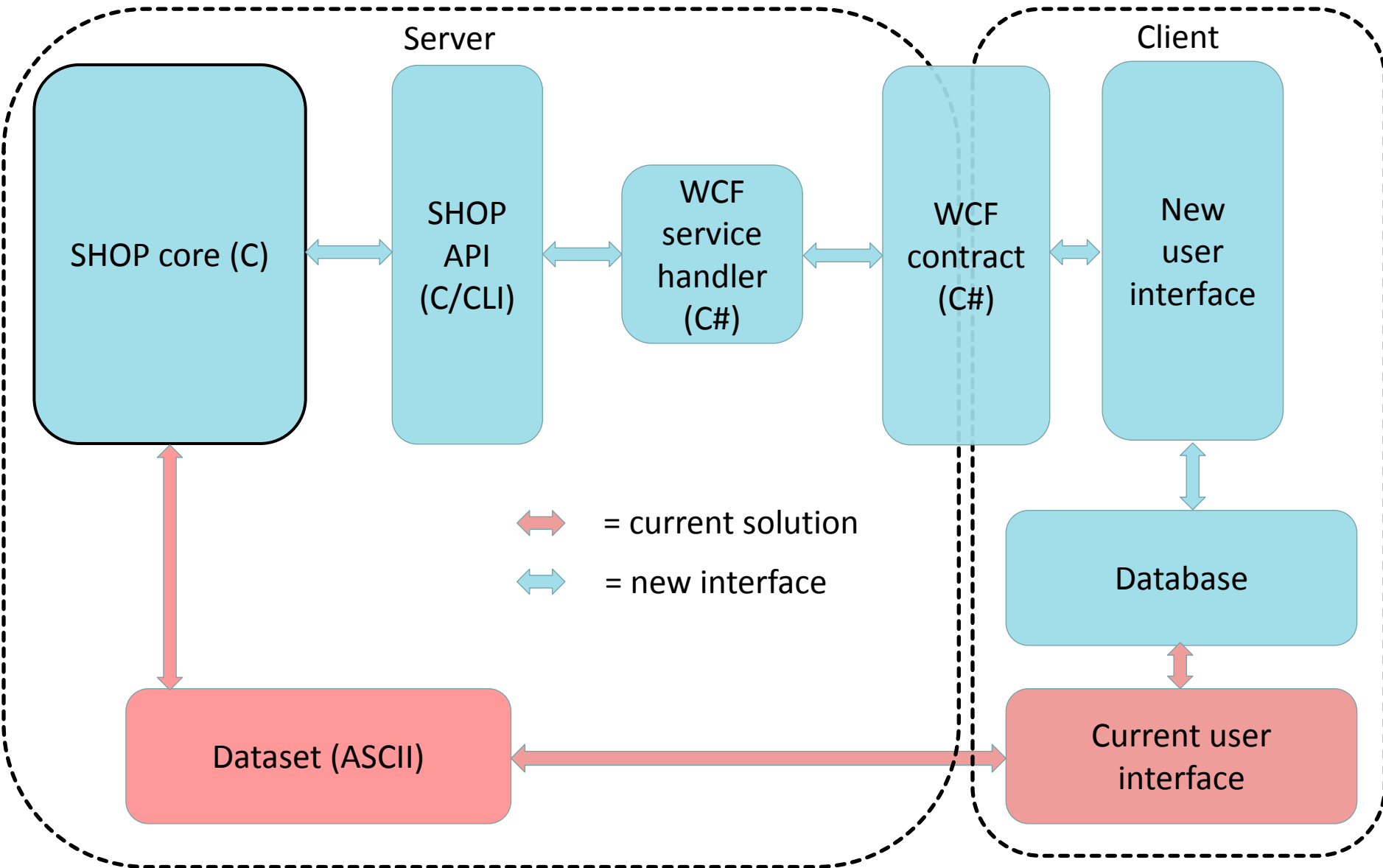
Optimization vs Simulation: Flow in deltameter



Current interface to SHOP core



New interface to SHOP core



New interface to SHOP core

