

SHOP USER FORUM

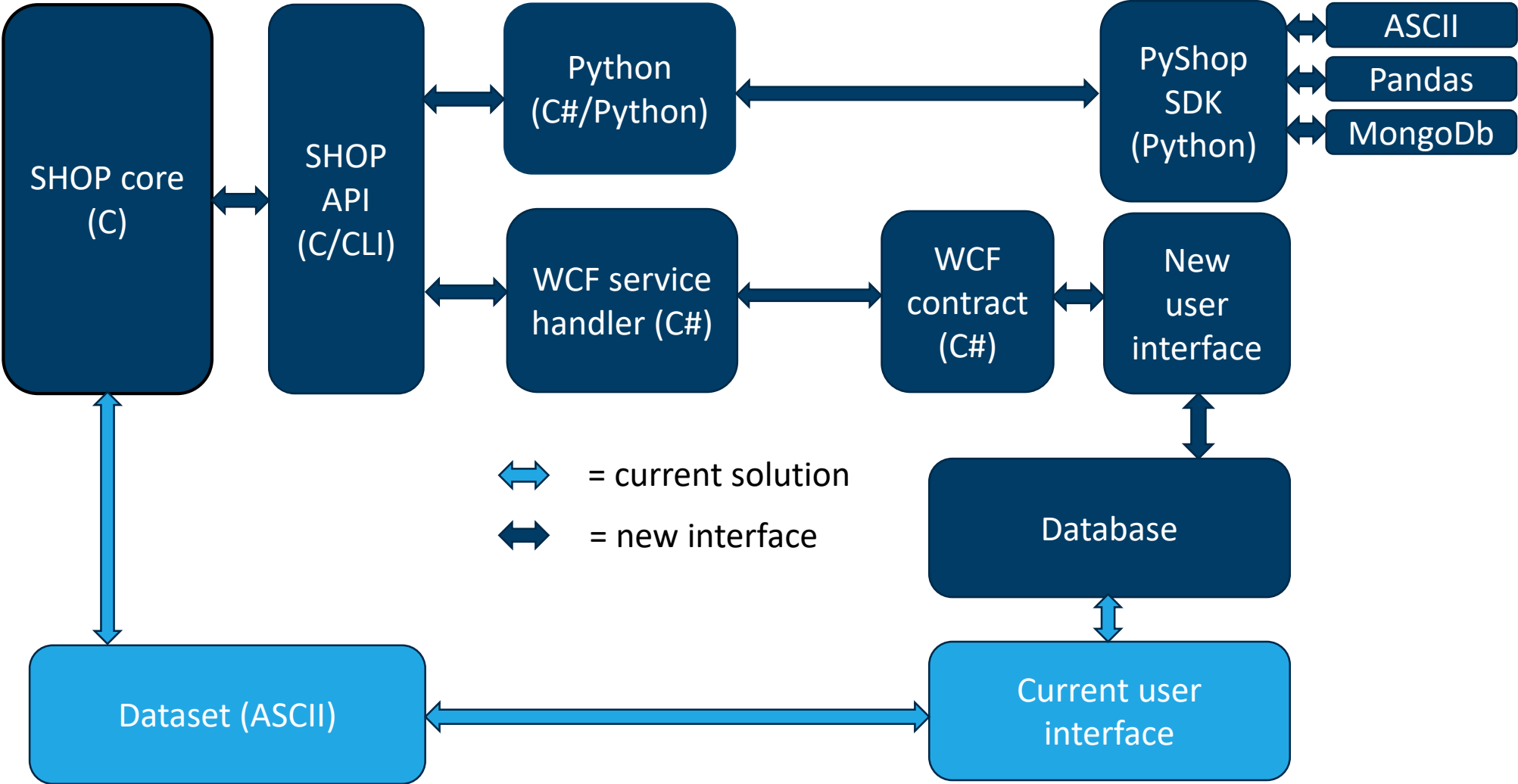
Per Aaslid

SINTEF Energy Research

API (Application Programming Interface)

- Demo
- Architecture
- PyShop

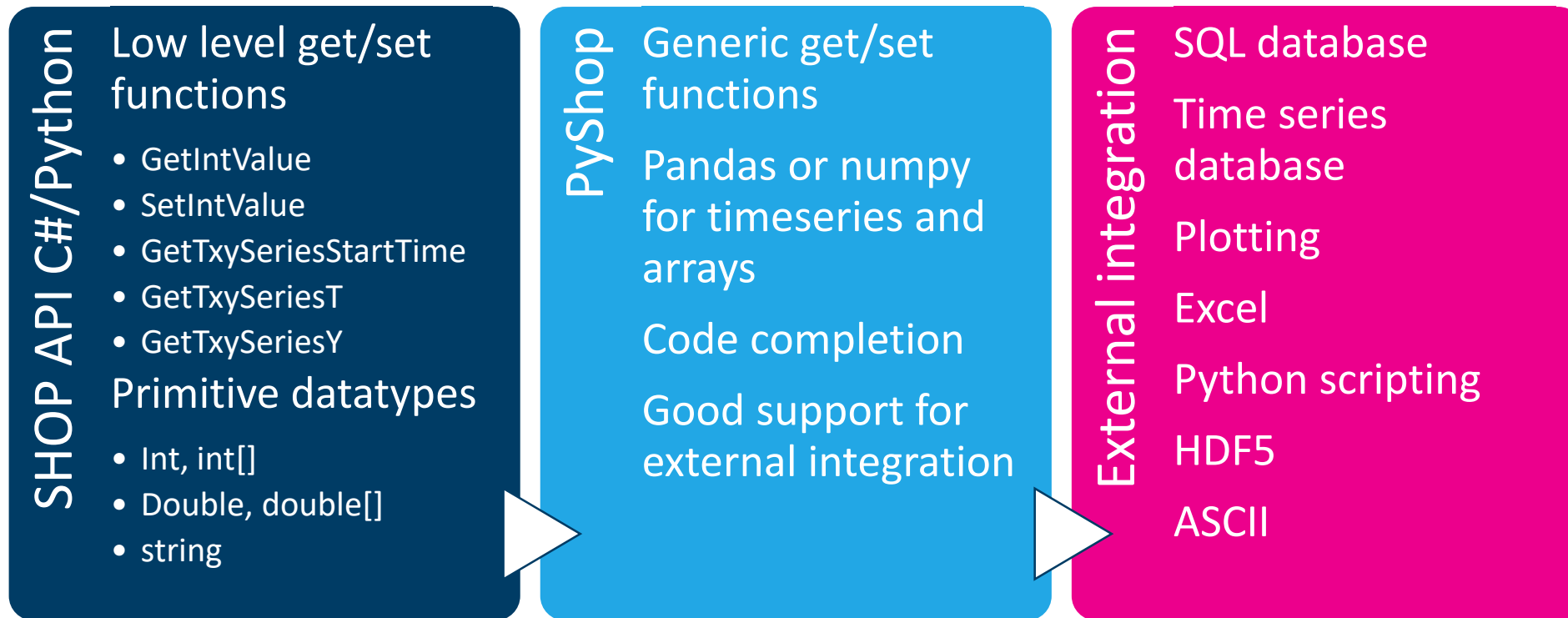
API architecture



Why Python?

- Easy to learn
- Easy to integrate with other programming languages, databases, file formats
- Widely used for data science both in academia and industry
- Large community

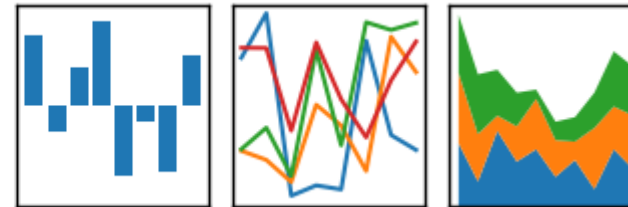
SHOP integration with PyShop



Pandas in PyShop

pandas

$$y_{it} = \beta' x_{it} + \mu_i + \epsilon_{it}$$

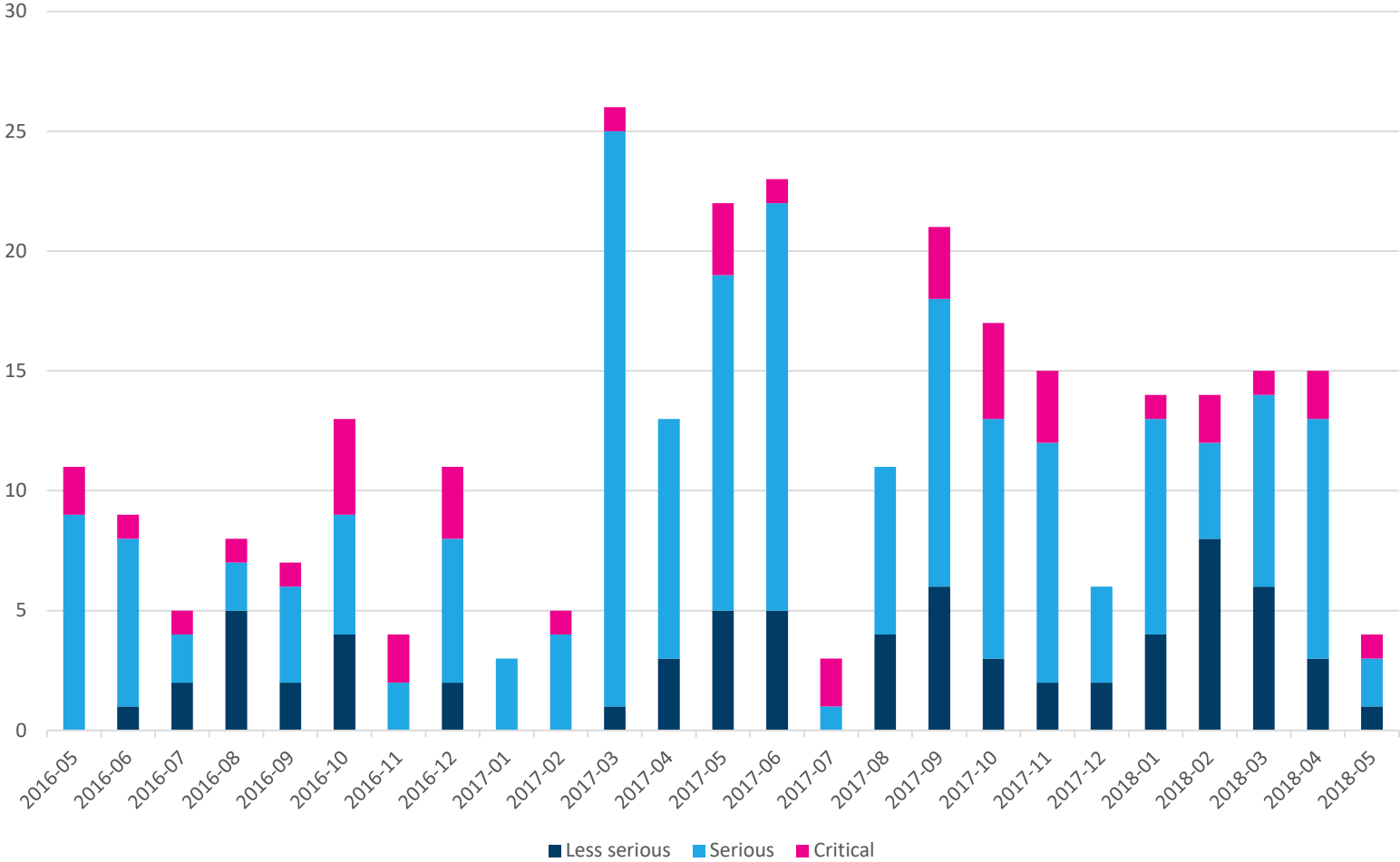


- High-performance python library for data structures and analysis
- Open source project
- Supported by data science libraries (scikit-learn, TensorFlow, Keras)
- Used for time series and xy data in PyShop
- Built-in integration against excel, csv, hdf5, SQL, JSON
- 3rd party libraries for integration against time series databases, MongoDB and more

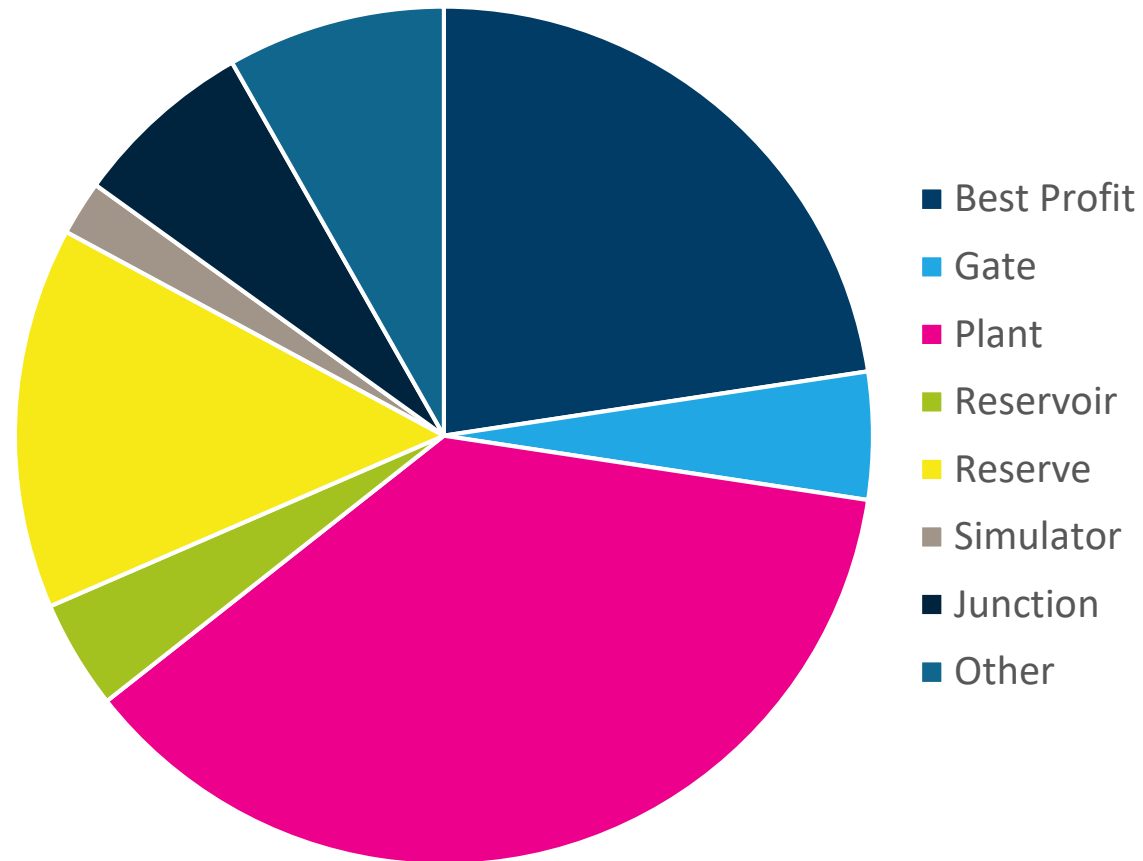
Further API development

- Integrate documentation in API
- Replace C# interface in PyShop with C++ for better performance
- Improve handling of errors and error messages
- Improve logging in PyShop
- Improvements based on user feedback

Bugs reported in SHOP



Bug reports per category



SHOP SharePoint (SINTEF Uno)

- Latest SHOP [documentation](#)
- Newest SHOP [versions](#)
- [PyShop](#) – SHOP Software Development Kit

Release notes

- [Release notes](#) published at SharePoint

New in SHOP - maintenance

- New plant model (SHOP 12)
- Restructured junction model
- Objective function as time series
- Objective per object (licensed)
- Improved weir description
- Restructure PQ-curves (ongoing)

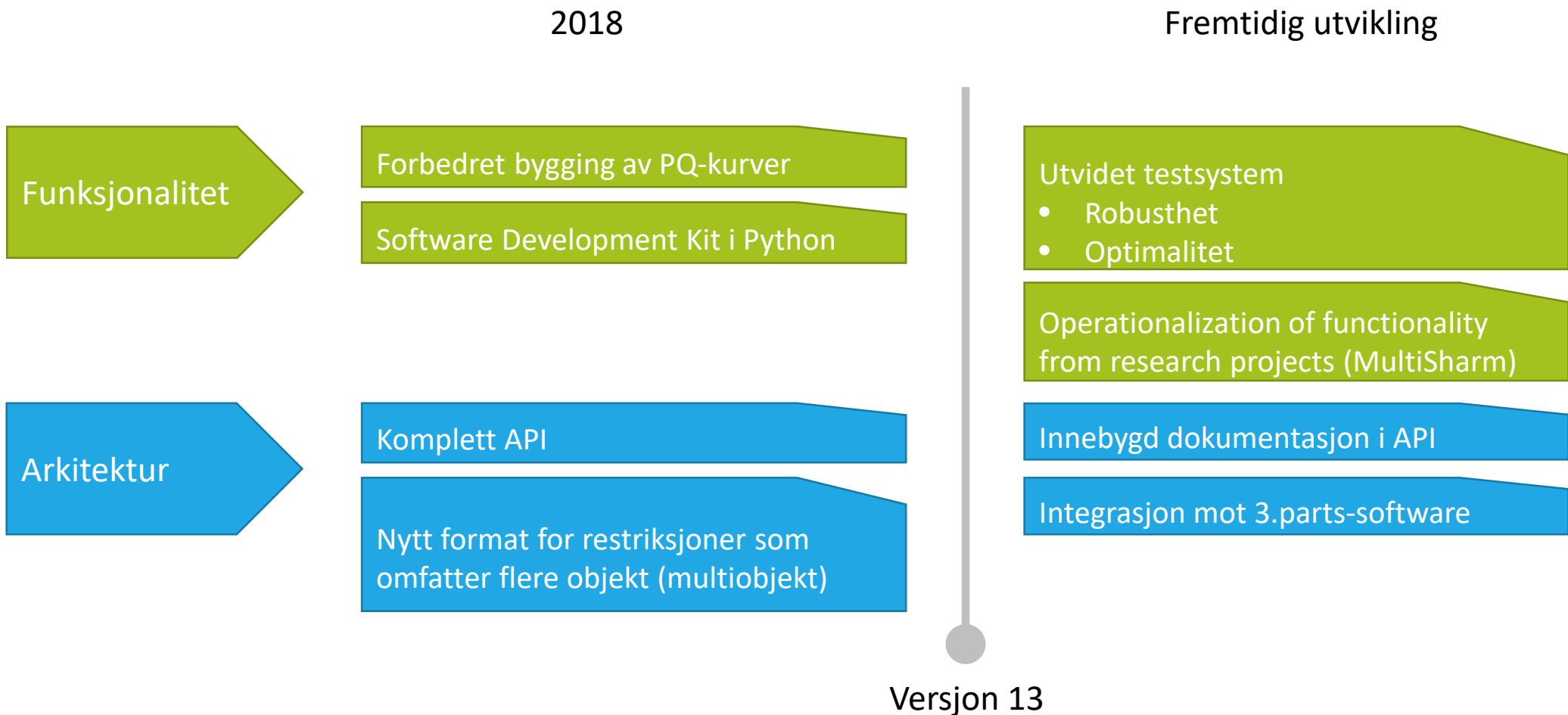
New in SHOP – maintenance

- Show restrictions causing infeasible LP-problem in log
- Performance improvements for first release of SHOP 12
- Updates in Gurobi and OSI solver interface
- More functionality available in API
- Heuristics for unit committment without MIP

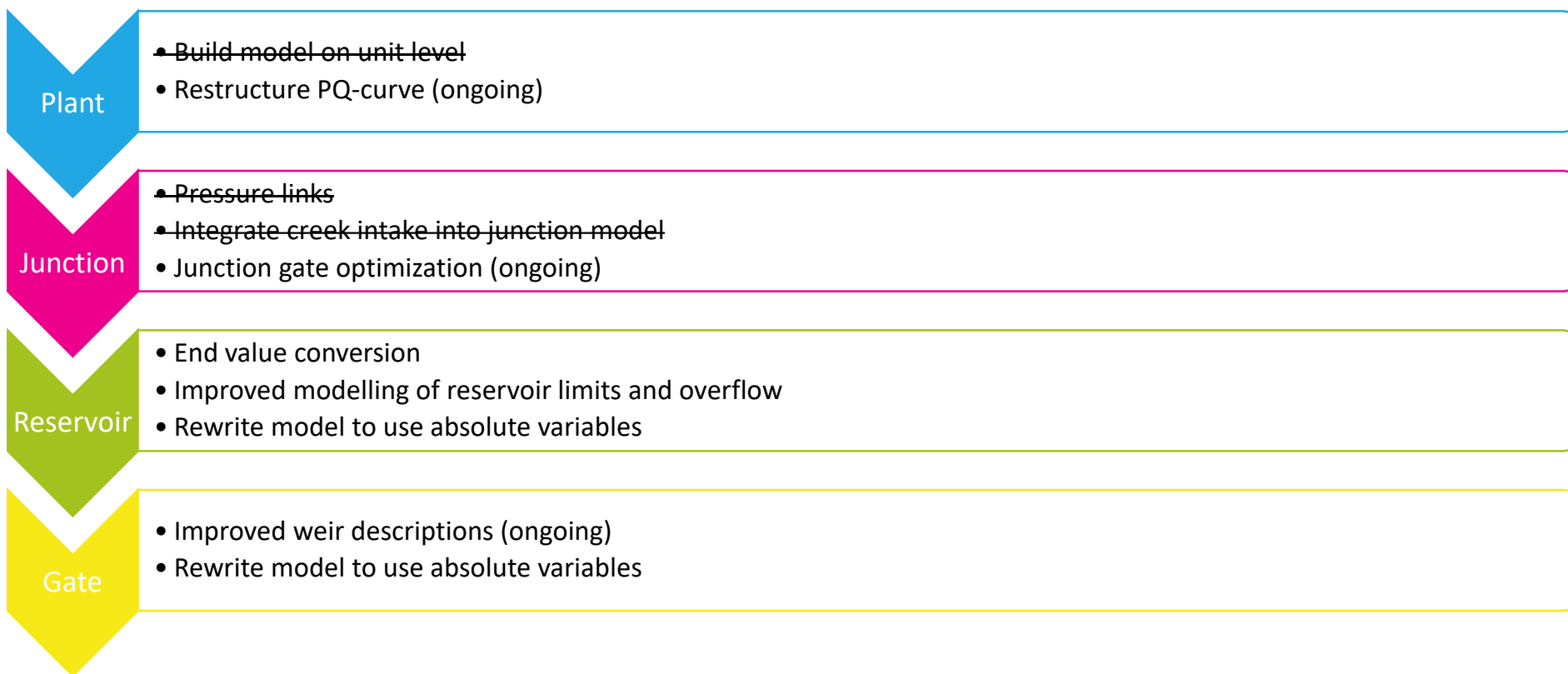
New in SHOP (R&D)

- Pressure links
- Best profits
- Simulator inflow calculation
- Junction gate optimization (ongoing)
- Objective from simulation (not started)

Roadmap for SHOP



Maintenance plan



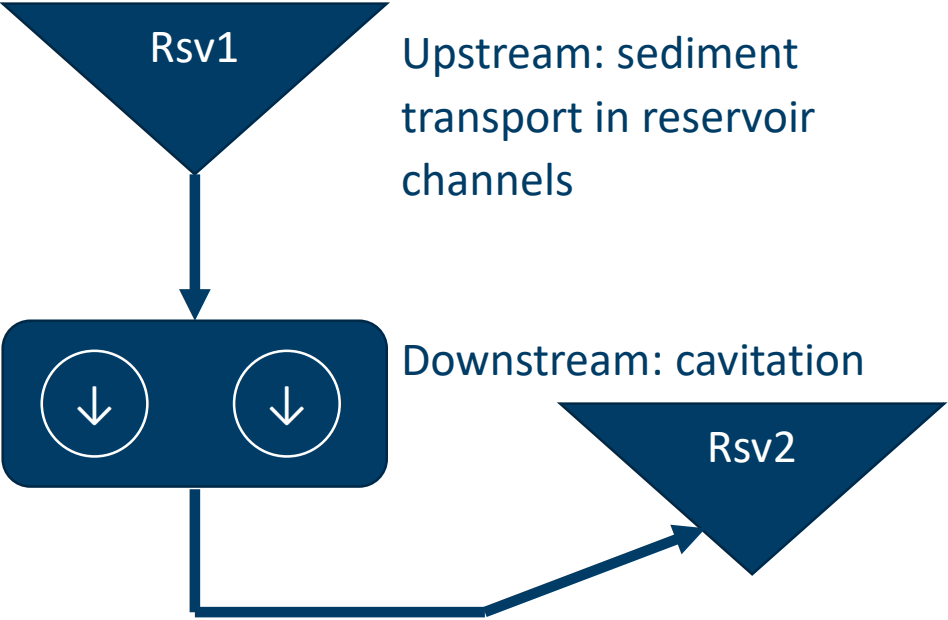
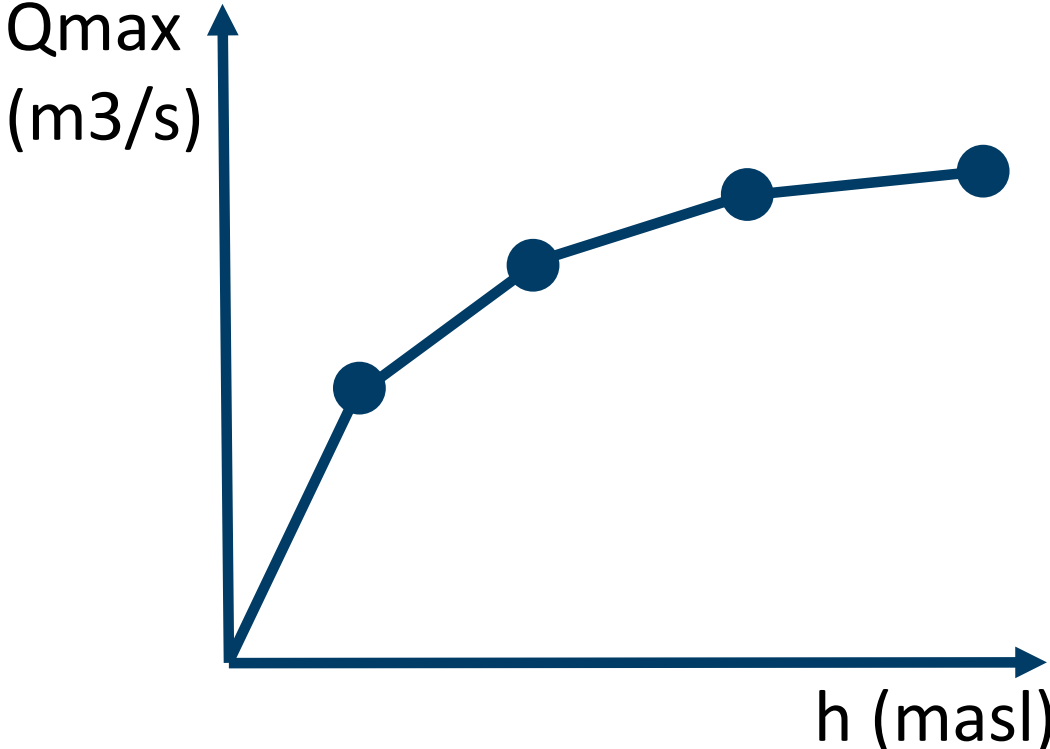
Multi object restructuring

MULTI_OBJECT_DATA keyword sense name	OBJECT_GROUP <Group name> <sense>
OBJECT_LIST	
object_type1 name1	CONNECT PLANT/OBJECT_GROUP <Plant name> <Group name>
objevt_type2 name2	CONNECT PLANT/OBJECT_GROUP <Plant name> <Group name>
/OBJECT_LIST	
TIME_INTERVAL	OBJECT_GROUP <Group name> DATA_VALUE <TXY> T=time, Y=value
start_time end_time	OBJECT_GROUP <Group name> INTERVAL_LENGTH <TXY> T=start_time, Y=timespan
/TIME_INTERVAL	
PENALTY_COST unit	
UP value unit	OBJECT_GROUP <Group name> PENALTY_UP <TXY> T=time, Y=value
DOWN value unit	OBJECT_GROUP <Group name> PENALTY_DOWN <TXY> T=time, Y=value
/PENALTY_COST	
DATA_VALUE	
data value unit	
/DATA_VALUE	

New project: Tuning of open-source CBC solver

- CBC (Coin Branch- and Cut) is an open source alternative to CPLEX
- Out-of-the-box performance significantly slower than CPLEX
- Methods for reducing solver time:
 - Heuristics for start basis first iteration
 - Using warm start from previous iteration
 - Tuning of parameters for CBC and CLP pre-solver
 - Strategy settings for branch-and-bound in CBC
 - 3rd party libraries for parallelization of branch-and-bound

New project: Discharge limits



Any other business



Teknologi for et bedre samfunn