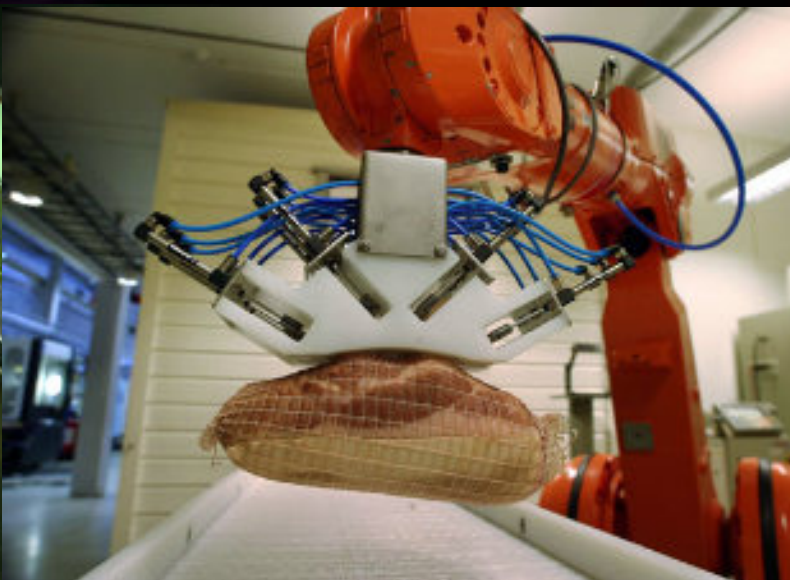


SINTEF Technology and Society



SINTEF Technology and Society

SINTEF Technology and Society develops new knowledge and technology to add value on company and society level. This is done through a wide range of scientific methods, analyses, tests/simulations and development of products and services in five main areas:

Safety and Reliability

Organization and Management

Transport Studies

Applied Economics and Operations Research

Regional Development





SINTEF Technology and Society

New Praxis

Our objectives

- **Study New Praxis:** Generate knowledge about a changing working life
- **Form New Praxis:** Actively contribute to development work
- **Communicate New Praxis:** Share our knowledge and take part in the public debate



Our research focus

In our research the following themes are important:

- Local work practices in global value chains
- Industrial Relations
- Praxis-based management and organizational analyses
- Human – Technology – Organization

Our approach and methods

- Co-generation of learning and research with users
 - Praxis-based
 - Dialogue-based
- Scientific methods
 - Depth / Width
 - Inside / Outside
- Different projects – different objectives
 - Studies, development, evaluation
 - Communication
- Process skills
 - Methods, techniques, tools, exercises

Disciplines

- Sociology
- Psychology
- Social Anthropology
- Industrial Economics and Technology Management
- Close cooperation with technology departments in SINTEF
- Close cooperation with social sciences and technology departments at NTNU

We are

Research Director Tore Nilssen

Project Secretary Gunnveig Grøtan

Researchers

Thale Kvernberg Andersen, Cand.polit

Liv Berge, Cand.polit

Marte Pettersen Buvik, Cand.polit

Hanne Olofsson Finnestrand, Cand.polit

Ulla Forseth, PhD

Grete Håkonsen PhD

Tove Håpnes, Cand.polit

Gaute Knutstad, PhD

Gunnar Lamvik, PhD

Pål Næsje, PhD

Johan Elvemo Ravn, PhD

Monica Rolfsen, PhD, Associate Professor, NTNU

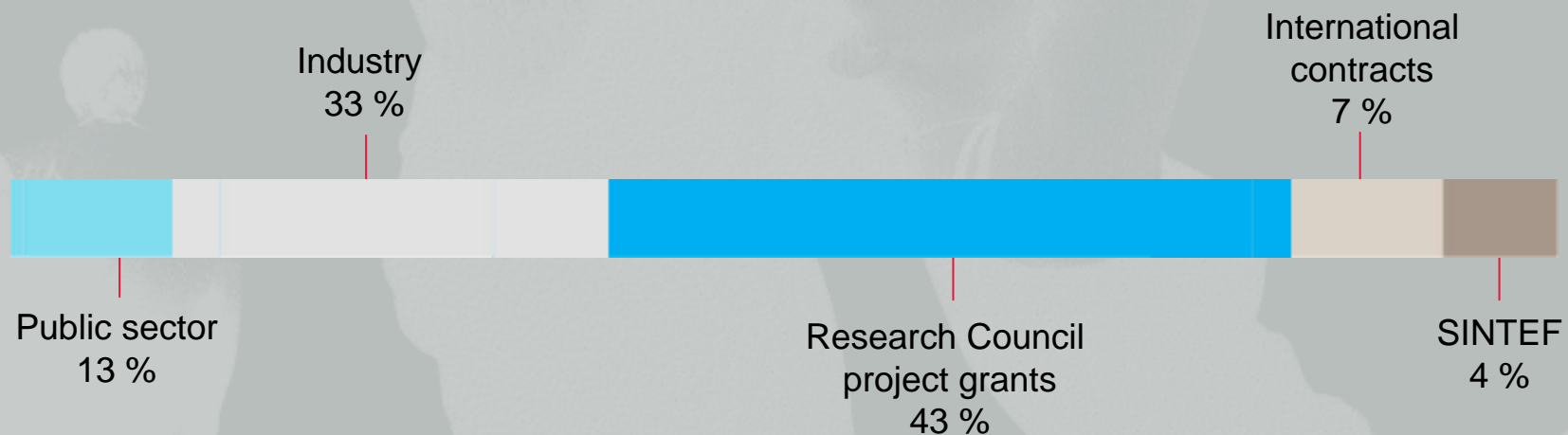
Emil Røyrvik, Cand.polit

Kari Skarholt, Cand.polit

Hans Torvatn, PhD

Lisbeth Øyum, PhD

New Praxis revenues 2000-2007



Turnover in 2007: NOK 14 million (approx. 1.8 m€)

Reference projects

Partnership-based management development (NHO/LO)

- The potentials/challenges of the Norwegian model
- Quality of work and increased value creation
- Operation-level management, teams, organization, design/manufacturing communication

Kristin and Tyrihans into the future (StatoilHydro)

- Integrated Operations in a modern offshore organization
- Increased up-time and robust/flexible operation model
- “One Directed Team”, direct communication and effective decision making, hands-on management, flat organization

Healthy Workplaces (Norwegian Research Council)

- Healthy workplaces in global companies
- Organizational factors' impact on long-term employee health
- Healthy workplaces, motivation, maintain company's market position