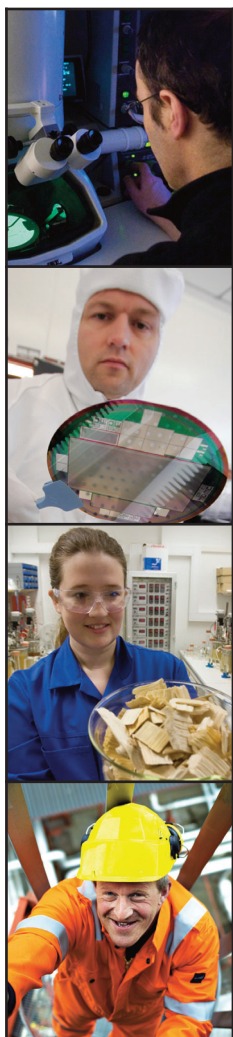


The SINTEF Group is the largest independent research institution in Scandinavia. Our vision is "Technology for a better society". We aim to contribute to growth in value creation, improved quality of life and a sustainable development through research and knowledge.

# This is SINTEF



SINTEF creates value through knowledge generation, research and innovation, and develops solutions and technology that are adopted by industry and society.

SINTEF is a broad-based, multidisciplinary research group with international top-level expertise in technology, natural science, medicine and social science. Our aim is to become the most respected contract research institution in Europe

The SINTEF Group comprises the SINTEF Foundation, plus four limited companies and SINTEF Holding. We are a competitive research group with a significant potential to make a positive contribution to the development of society at regional, national and international level.

SINTEF is a non-commercial organisation. Income from contract research is invested in further research, scientific equipment and expertise.

### Some key figures

At the turn of the year, SINTEF had 2145 employees. Our colleagues come from 64 different countries, and in 2008 they generated new knowledge to the value of NOK 2.6 billion.

More than 90 percent of our earnings come from contracts for industry and the public sector, and from project grants from the Research Council of Norway. Our basic grant from the Research Council accounts for around eight percent of the total.

### Our partners

SINTEF is in partnership with the Norwegian University of Science and Technology (NTNU) in Trondheim and also cooperates with the University of Oslo. NTNU personnel work on SINTEF projects, while many SINTEF

staff teach at NTNU. Our collaboration involves widespread common use of laboratories and equipment, and more than 500 people are jointly employed by NTNU and SINTEF.

### International activity

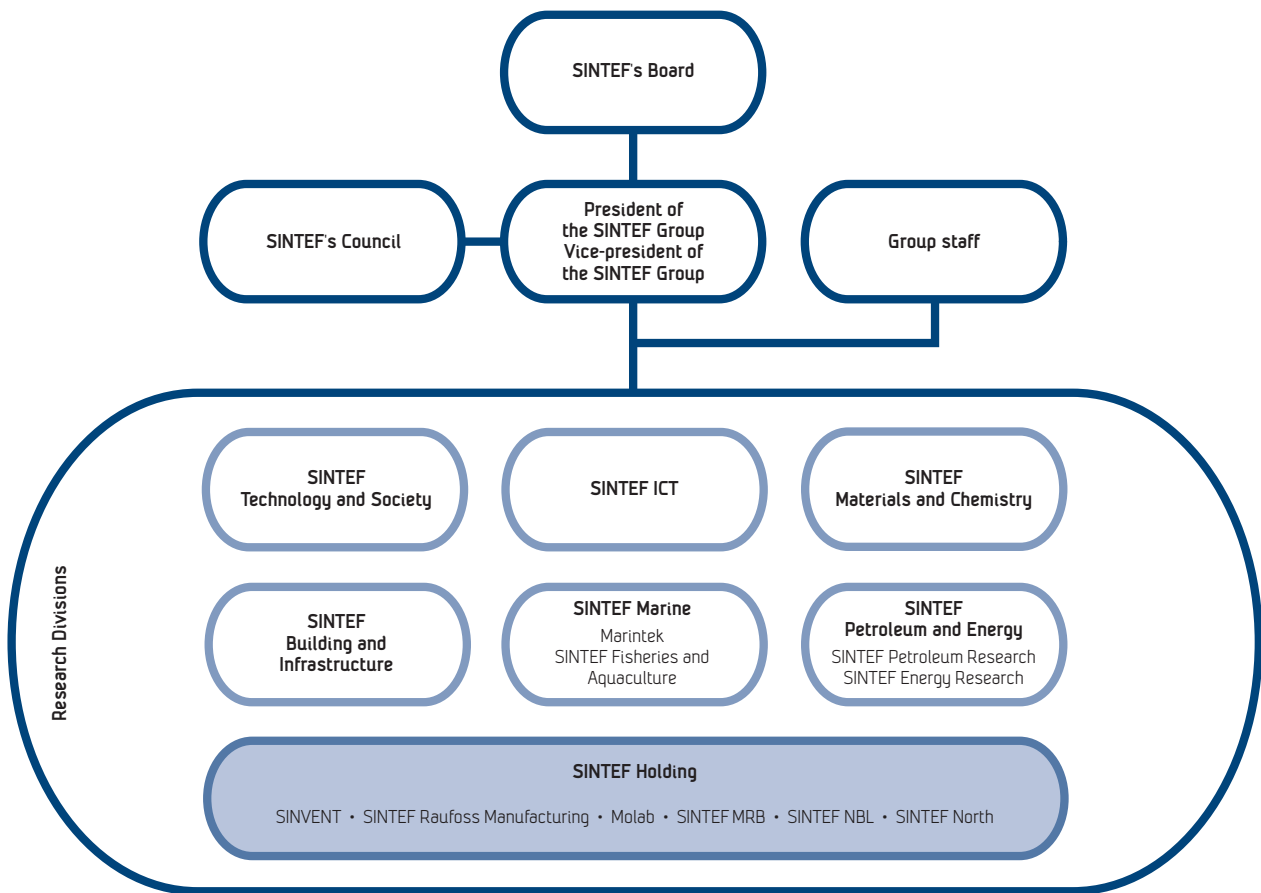
In 2008, some 13 percent of our turnover derived from international contracts. About one third of our international turnover comes from EU research programmes. We give these high priority, because we believe that it is important to participate in multinational knowledge-generation efforts, and because such projects give us access to interesting networks.

The rest of our international turnover comes from contract research projects performed on behalf of overseas clients. Our ambition is to grow in other countries, and for this reason we are investing in areas in which we are particularly strong: oil and gas, energy and the environment, materials technology and marine technology.

### Commercial spin-offs

SINTEF also acts as an incubator for new industrial companies. In 2008, we were involved in 15 commercialisation of 13 different SINTEF technologies, through licensing agreements and the establishment of new companies. We are active owners of our start-up companies, and we help them to continue to develop. Selling our shareholdings in successful spin-offs realises liquid assets that we subsequently invest in the generation of new knowledge. Nevertheless, the most important part of our work is the development of existing industrial companies. Every year, SINTEF supports the ongoing development of some 2000 Norwegian and foreign companies via its research and development activities.

# Our organisation



**SINTEF Technology and Society**  
 contributes to wealth creation and to the sound and sustainable development of society. We are a multidisciplinary research institute within the areas of health, transport, technology management, safety and applied economics.

**SINTEF ICT**  
 offers integrated research-based knowledge via access to a broad platform of technology and competence in ICT.

**SINTEF Materials and Chemistry**  
 possesses top-level expertise in the fields of materials science, applied chemistry and applied biology. We work closely with industry in the development of advanced materials, products, processes and tools.

**SINTEF Building and Infrastructure**  
 is the third-largest building research institute in Europe. It was established in 2006 following the merger with the Norwegian Building Research Institute (NBI).

**SINTEF Marine**  
 consists of MARINTEK and SINTEF Fisheries and Aquaculture, and it deals with exploitation of the marine environment.

**SINTEF Petroleum and Energy**  
 comprises SINTEF Petroleum Research and SINTEF Energy Research, and operates within the whole of the value chain for petroleum products and sustainable energy systems.

**SINTEF Holding**  
 was established with the aim of separating out SINTEF's activities at the interface between commercial activity and research from our core activities. SINTEF Holding is a taxable entity, which comprises strategic ownership and newly established companies.

## Contact

Trondheim    Oslo  
 SINTEF, NO-7465 Trondheim    SINTEF, PO box. 124 Blindern, NO-0314 Oslo  
 Tel: +47 73 59 30 00\*, Fax: +47 73 59 33 50    Tel: +47 22 06 73 00, Fax: +47 22 06 73 50

Email: [info@sintef.no](mailto:info@sintef.no)  
[www.sintef.com](http://www.sintef.com)