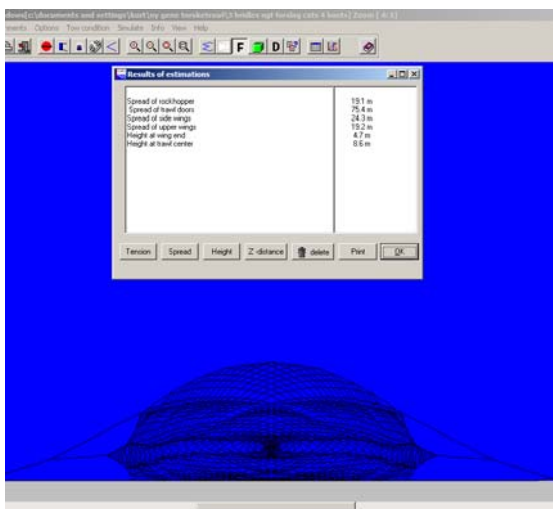


CATS for Windows

Simulation of trawl performance

Computer Assisted Trawl Simulation (CATS) used by leading netmakers worldwide for estimation of trawl performance is now available in a new version. The development and marketing of the CATS Computer Assisted Trawl simulation is continued by SINTEF Fisheries and Aquaculture.



From the results the user can read the main geometry of the trawl such as horizontal and vertical mouth opening, spread of the trawl doors, sea bed contact and towing loads.

The estimated distribution of loads in the net twines can be obtained by pointing at the rope in question.

Calculation time for a typical configuration will be a couple of hours on a high-end computer.

The program runs on a fast Personal Computer with a Windows 95/98, 2000, NT or XP operating system. The results from the estimations can be printed on any compatible printer.

CATS will estimate the performance of a trawl gear. The software package can handle pelagic and demersal trawls in single and pair trawl configuration.

The estimates are based on information from a net plan designed with CadTrawl; this information is the basis for a simplified numerical model.

Information on hanging ratios, rigging and trawl attachments are given to the program by pointing to specific node points in the trawl.

The program facilitates databases with necessary information about the physical parameters of accessories as trawl doors, floats, clump weight wires and ground gear.

The trawl gear can be seen from the side, top or from the front. Also a 3 dimensional display can be seen as shown at right.

