



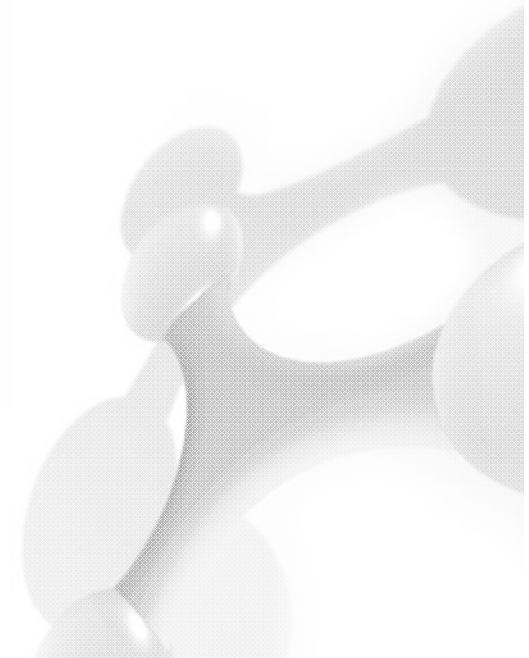
DigiVent with Wireless Technology BWSNetwork adds customer value

Millicore's research partner
in this project:



Presentation of

Johannes Kocher-O.
Engineering Manager

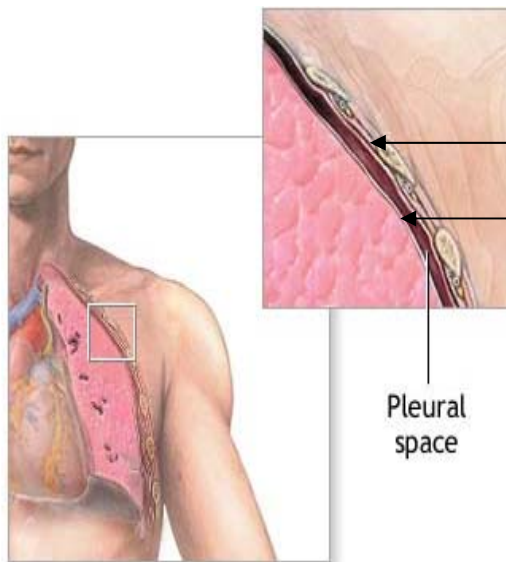




What is DigiVent?

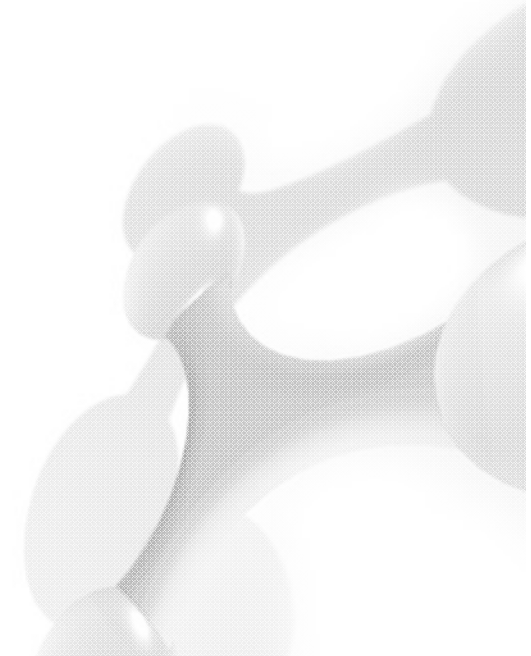
DigiVent is the world's first Intra Pleural Space Management system

What is the Pleural Space?



- ❖ Lungs have two linings
 - Parietal pleura
 - Visceral pleura

Space in-between the two linings is the Pleural Space

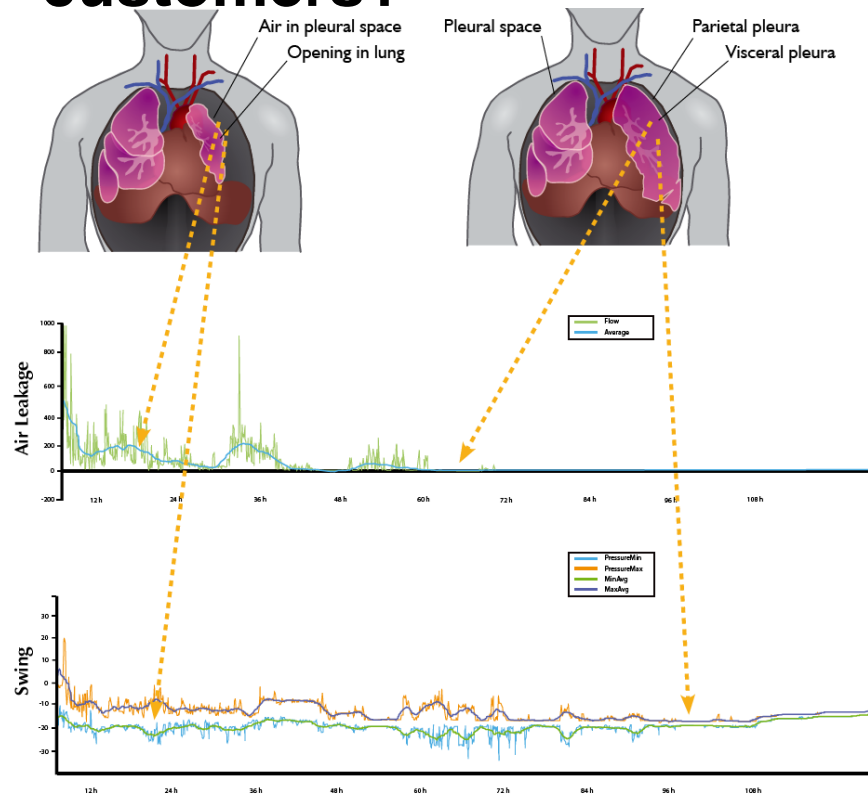


What does DigiVent do?

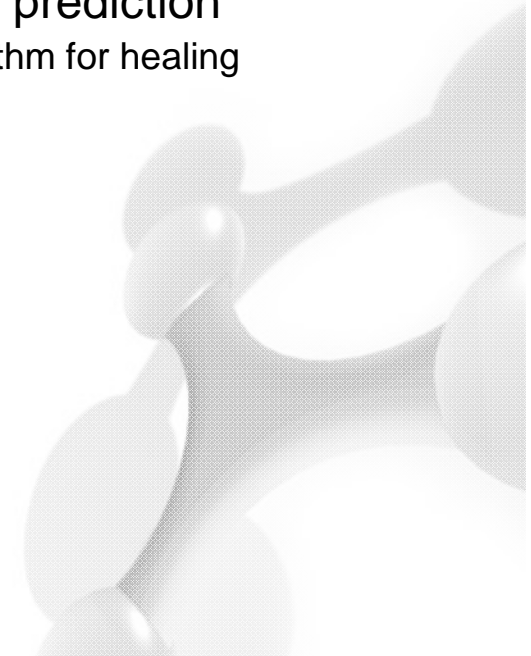
- Quantify and record Air leaks
 - ❖ Create Standard of Care
 - ❖ Compare Sealants
 - ❖ Future Study
- Recording Intra Pleural Pressure
 - ❖ **Predict** Pneumothorax by 'pressure curves'
 - ❖ **Predict** if a patient can tolerate Water Seal
 - ❖ Lead to "Active Suction Management"
- Reporting / documenting
 - ❖ Common Language
 - ❖ Nurse Management



What benefits has a wireless DigiVent for our customers?



- Efficient management
 - ❖ Online monitoring of the patient
- Improved Quality
 - ❖ Improved decision taking with more information
- Reduced length of stay
- Possible prediction
 - ❖ Algorithm for healing

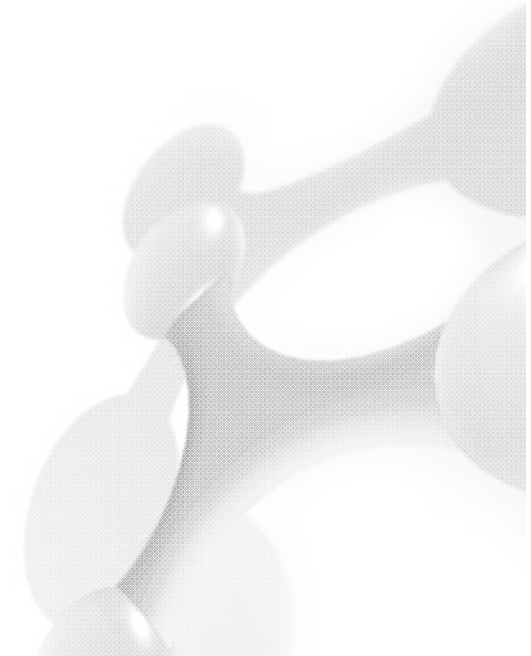


Why is the BWSNetwork important for Millicore?

- Strengthen position of Millicore
 - ❖ Improved customer value with wireless DigiVent
 - ❖ Strengthen Millicore's position as innovative leader in Pleural Space Management

- Contacts for further cooperation's
 - ❖ Interaction between research institutes and companies

- Bundle research efforts
 - ❖ Finding broader solutions to the same questions
 - ❖ Defining interconnection points for modularization
 - ❖ Finding solutions that work on a broader basis



Millicore

- Growth company within MedTech

DigiVent

- First Intra Pleural Space Management system
- Presenting and recording leakage and pleural pressure

Wireless-DigiVent

- For increased patient safety& comfort

IMEGO

- Our research partner for innovative products

BWSN

- Opportunity to bundle research efforts
- Strengthen the position as a growth company in Scandinavia

