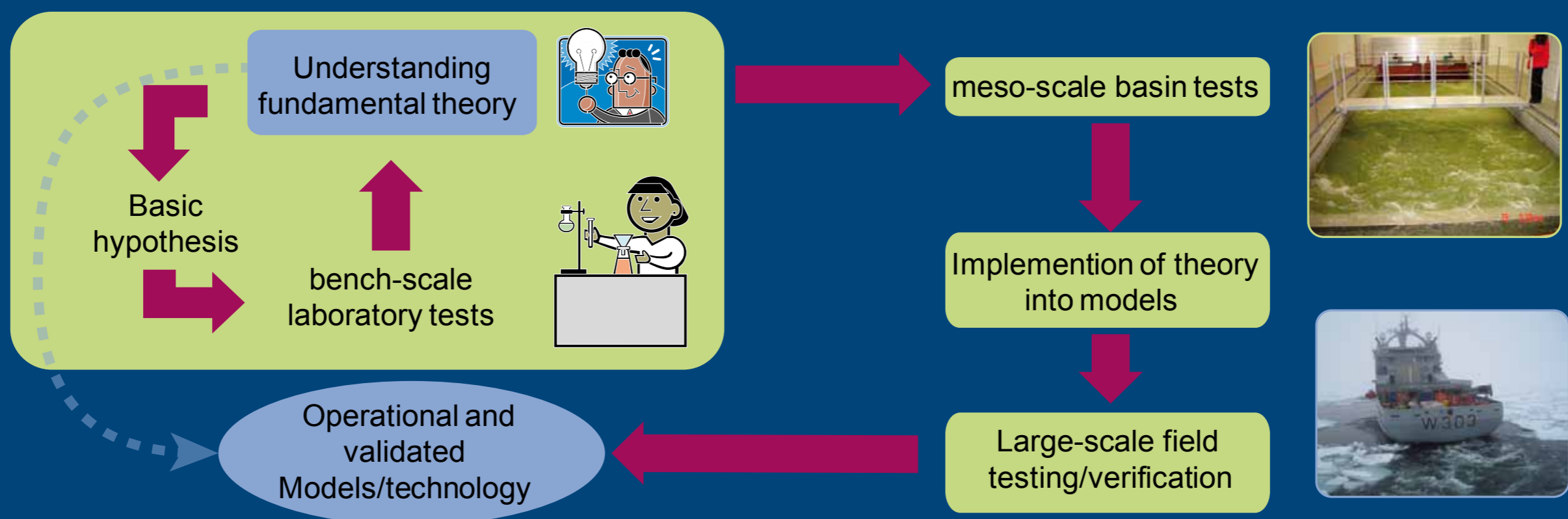


Oil Spill Response

From basic theory to applied technology

SINTEF marine Environmental Technology Approach



■ Laboratory testing

- Dispersability
- Emulsification
- Photo-oxidation
- Washing robot (Shoreline cleaning agents)
- Simulated shoreline system (shoreline - wave exposure)
- Sediment columns (bioremediation products/strategies)
- Ignitability testing for in-situ burning
- Exposure system for effect studies



■ Meso-scale

- Flume (wave generation, currents, light exposure)
- Shoreline basin (tidal variation, wave exposure, seawater exchange)
- High pressure exposure system (30 bar, 1400L)



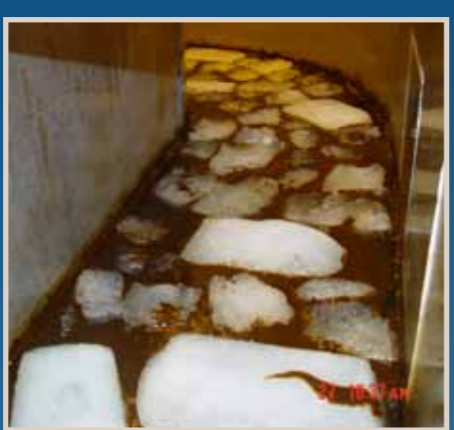
■ Large scale

- Basin (4x10x2m; waves 0,5m, current 5 kn)
- Tank (H=7m, D=3m)



■ Field testing and verification

■ Numerical model development



Contact:

Research Director, Tore Aunaas
 SINTEF Materials and Chemistry
 E-mail: tore.aunaas@sintef.no