

AQUACULTURE AND EDUCATION



www.aceaqua.no



- THE AQUACULTURE INDUSTRY NEEDS YOU

Why do we have a test centre for aquaculture technology? Why is this of interest to the community, the aquaculture industry and to you who are looking for an exciting education and a future job?

Aquaculture is the third largest export industry in Norway and Norwegian farmed fish is highly demanded. To continue the positive development in the industry we need people with different background who can work within a variety of fields.

What is ACE?

AquaCulture Engineering (ACE) has been in operation since 2009 and moved its activities to Frøya during spring 2013. ACE has three research permits for salmon. These are being used for research, development and testing of technology to make fish farming more safe, economic, future-oriented and sustainable.

Furthermore, ACE is used for teaching of pupils and students through close cooperation with Frøya Videregående skole and NTNU. SalMar Farming operates the fish farms that ACE uses. SINTEF Fisheries and aquaculture and NTNU are the major owners and important partners for the company.

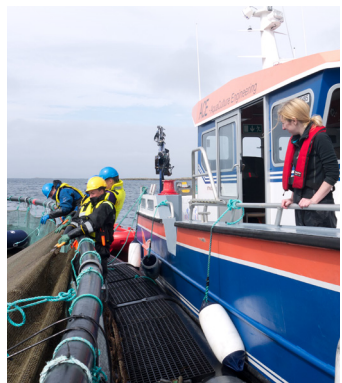
Projects

Some of the research areas at ACE have been:

- » Automation and control
- » Communication
- » Integrated multitrophic aquaculture
- » Safety and reliability
- » Interaction aquaculture - environment

FoU-plan

Together with SINTEF, ACE initiated in 2015 projects within areas such as feeding technology; monitoring of site, fish and environment; connection between environment and production; fouling, development of simulation tools as well as testing of new instruments. ACE also delivers production and environment data used for development of new modelling tools.



What can ACE do for you?

We can help you with organizing practical research in connection with project assignments, theses etc.

We have a 42 feet boat custom-built for research purposes, fish farming sites, fish, instruments and data. At the island of Frøya, ACE has technicians who assist researchers and students in implementation and accomplishment of projects as well as transportation to fish farms. You can come to ACE and learn everything about what is going on at a fish farm, meet researchers and ask questions to the workers and take part in different operations on site.

Are you interested in visiting ACE?

If you are interested in visiting ACE please send the following information to Marianne Fon (mfo@aceaquaculture.com):

- » Name, e-mail and phone no.
- » Field of study and year
- » Type of experiment
- » Name of supervisor (if known)
- » Topic of interest



- TECHNOLOGY FOR THE FUTURE

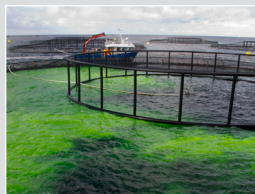
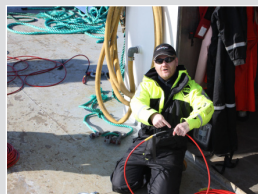
ACE is a hub connecting R&D institutions, suppliers and producers. Our projects are focusing on the main challenges in the aquaculture industry by using technology and how this effects people, fish and environment.

Large-scale facilities at ACE are designed to develop and test new aquaculture technologies. Researchers are conducting practical experiments and tests both under optimally controlled and realistic conditions.

ACE has offices in Trondheim and on the island of Frøya. Research activities are carried out in mid-Norway depending on the aim of the project. Main research facility, vessel and equipment are located at Frøya.



ACE participates in AquaExcel, an EU-project gathering different R&D infrastructures in different countries. In this project offers its facilities to other research institutions in europe through TNA (Trans National Access).



AquaCulture Engineering AS
mail@aceaqua.no • www.aceaqua.no