

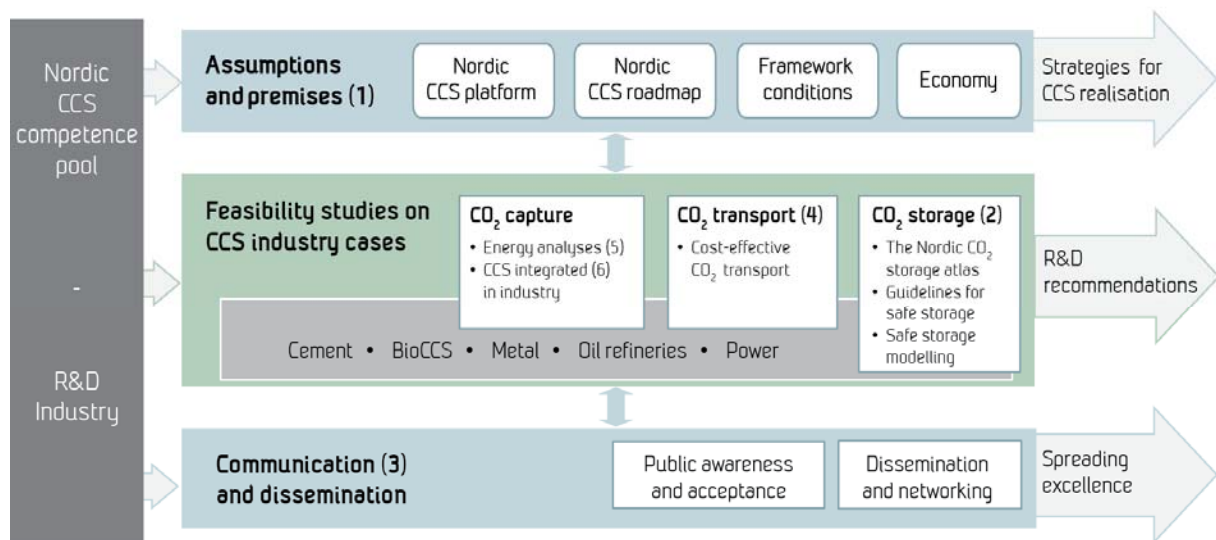
The Nordic CO₂ storage atlas and the process of making it

Karen Lyng Anthonsen

NORDICCS Conference contribution D 6.1.1407 (3)

August 2014

NORDICCS concept:



Partners:



Contact: Centre Director Nils A. Røkke • + 47 951 56 181 • Nils.A.Rokke@sintef.no
www.sintef.no/NORDICCS

Summary

A description of the process and methodology of making the Nordic CO₂ storage atlas. Including available data, the difference storage options in the Nordic countries and how to evaluate the storage capacities.

Contribution to the International Carbon Conference, Reykjavik, Iceland, August 2014.

Keywords Storage capacity, CO₂ storage atlas, Nordic countries, sedimentary basins, basalts

Authors Karen Lyng Anthonsen, GEUS – Geological Survey of Denmark and Greenland, Denmark, kla@geus.dk

Date August 2014



About NORDICCS

Nordic CCS Competence Centre, NORDICCS, is a networking platform for increased CCS deployment in the Nordic countries. NORDICCS has 10 research partners and six industry partners, is led by SINTEF Energy Research, and is supported by Nordic Innovation through the Top-level Research Initiative.

The views presented in this report solely represent those of the authors and do not necessarily reflect those of other members in the NORDICCS consortia, NORDEN, The Top Level Research Initiative or Nordic Innovation.

For more information regarding NORDICCS and available reports, please visit <http://www.sintef.no/NORDICCS>.

The Nordic CO₂ storage atlas and the process of making it

Karen L. Anthonsen

Geological Survey of Denmark and Greenland – GEUS

Øster Voldgade 10, DK-1350 Copenhagen K, Denmark, e-mail: kla@geus.dk

One of the final outcomes of NORCICCS – the Nordic Competence Centre is a web-based CO₂ storage atlas, which will be public released in autumn 2015. The atlas will show the location of sites potentially qualified for CO₂ storage. The mapped storage sites will be ranked with respect to their suitability for CO₂ storage, based on geological properties and the state of knowledge, in order to point out the most prospective areas at present time.

The primary tools to map subsurface storage sites are wells and seismic surveys. The wells can give information about the existence of a porous reservoir rocks and overlying tight cap rocks. The seismic survey gives the possibility to map the reservoir and cap rock between the wells.

In order to judge if a mapped storage site will be able to contain the required amount of CO₂ from one or several emission sources it is important to estimate the storage capacity. The first approach is a static calculation, calculating the pore volume and multiplying it with a storage efficiency factor. If a potential storage site gives promising results, a dynamic modelling and injection simulation can give more detailed capacity estimations. In NORDICCS seven sites have been selected for modelling.

In the Nordic region four CO₂ storage options have been included in the mapping. It is potentially possible to store CO₂ in the pore space of sedimentary formations (aquifers), in depleted hydrocarbon fields or in porous basaltic lava. The last opportunity is ultramafic rocks where the CO₂ can react with the rock and form carbonate minerals (carbonisation).

The different geological setting in each of Nordic country yield different storage opportunities. In Finland the crystalline basement rocks only allow a minor potential for CO₂ storage by carbonisation of ultramafic rocks [1]. Sweden has the possibility to store in sedimentary formations in the south-eastern part of the Baltic Sea and South-West of Scania [2]. In Denmark and Norway the existences of extensive sedimentary basins offers the opportunity to exploit large pore volumes in aquifers for CO₂ storage [2] [3]. In Iceland the research project CarbFix investigate the potential for CO₂ storage by injection of CO₂ saturated water into porous basalts [2] [4].

[1] Aatos et al. (2006), *Report No. M10.1/2006/3*. Geological Survey of Finland (GSF)

[2] Anthonsen et al. (2013), *Energy Procedia* **37**, 5080-5092

[3] Halland et al. (2014), *CO₂ storage atlas - the Norwegian Continental Shelf*. The Norwegian Petroleum Directorate.

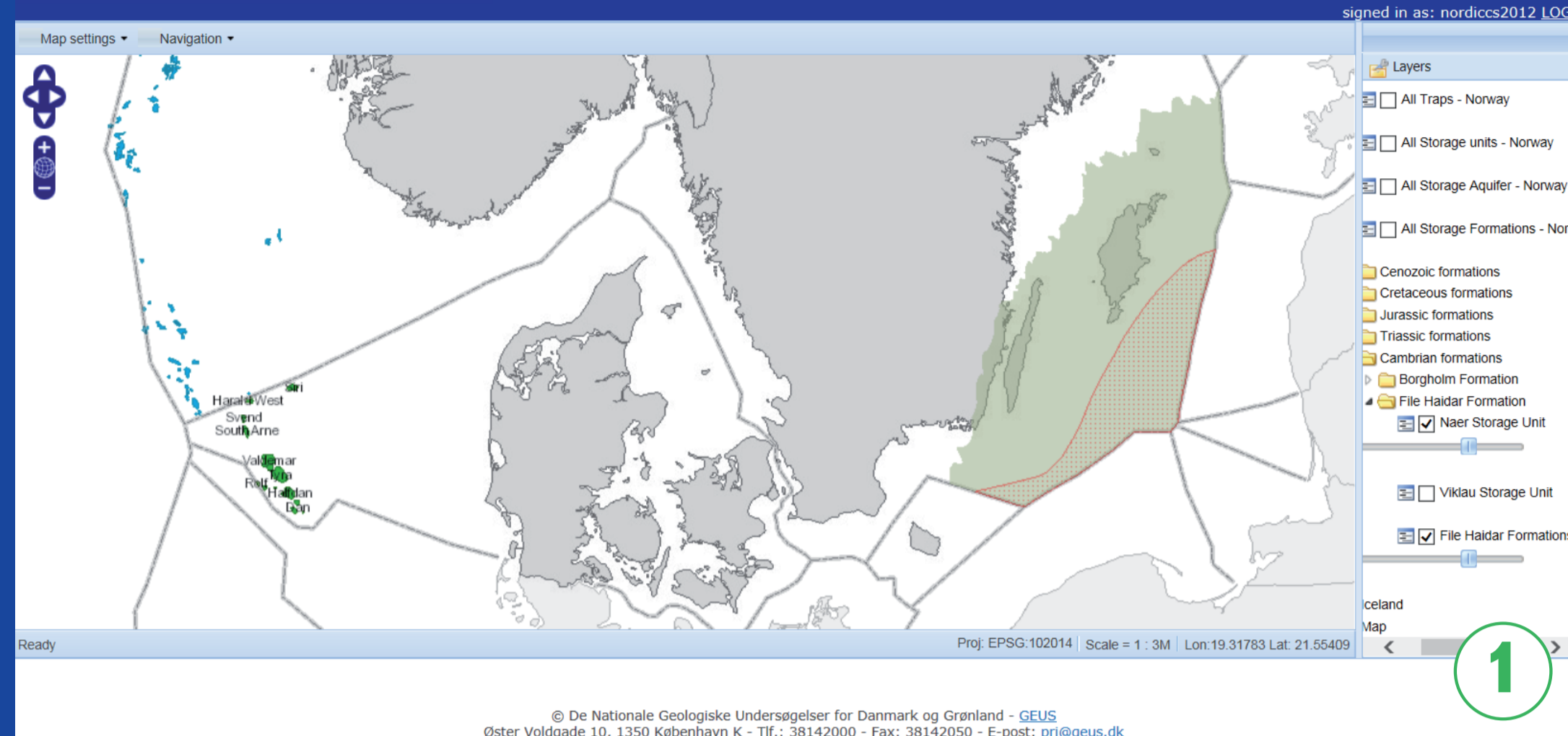
[4] Gislason et al. (2010), *International Journal of Greenhouse Gas Control* **4**, 537-545.

The Nordic CO₂ storage atlas and the process of making it

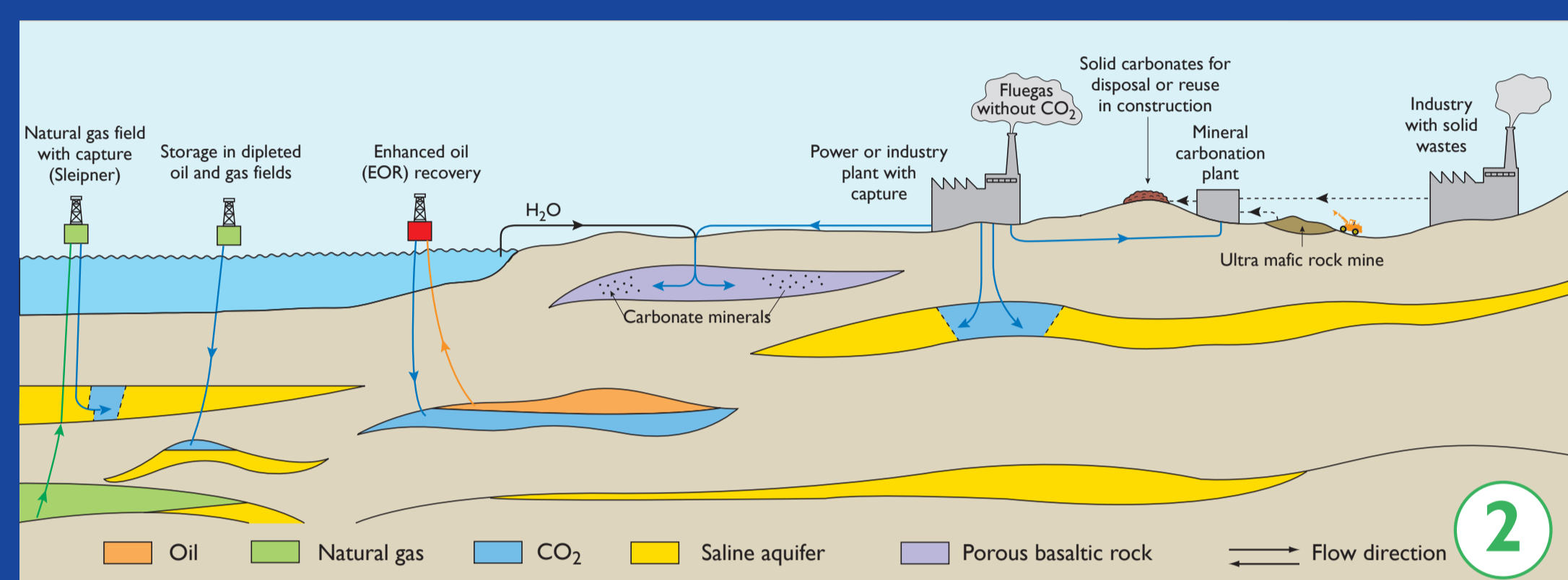


Karen L. Anthonsen

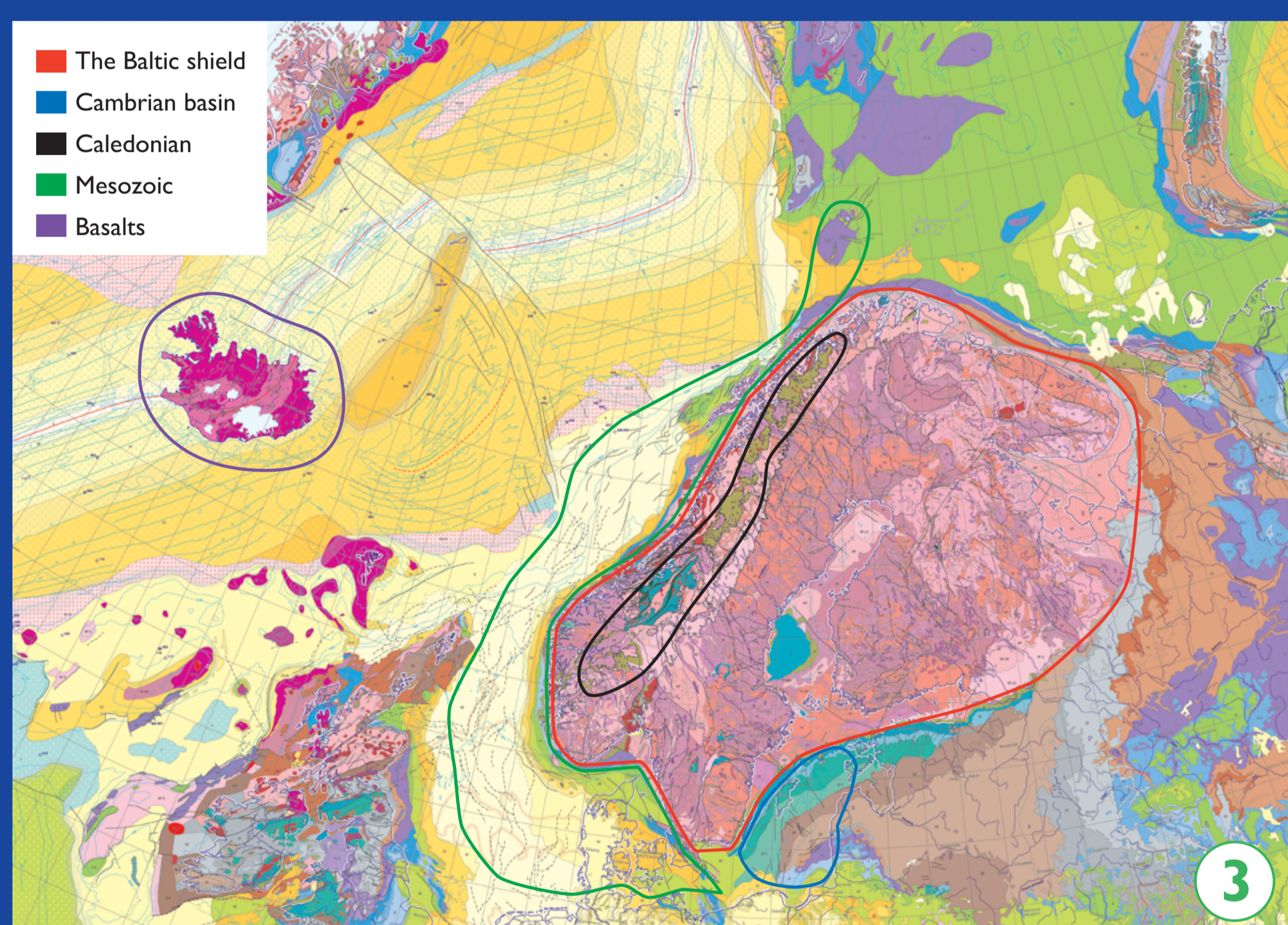
Geological Survey of Denmark and Greenland - GEUS
Øster Voldgade 10, DK-1350 Copenhagen K, Denmark, e-mail: kla@geus.dk



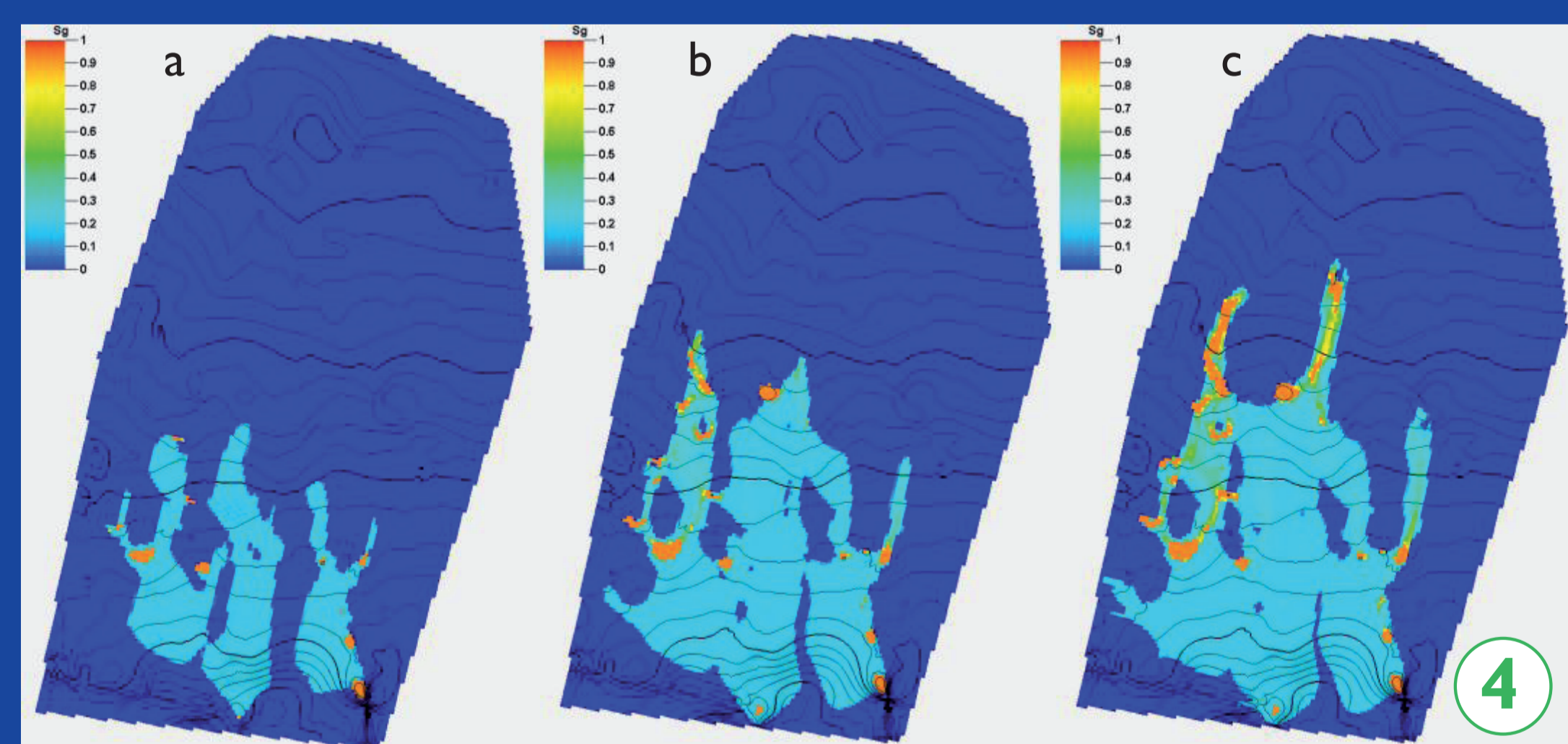
Prototype of the NORDICCS CO₂ storage atlas webGIS.



Geological CO₂ storage options in the Nordic region.



European geological map with outlines of the geological framework of the Nordic region.



Example of a CO₂ injection model. This example shows the CO₂ distribution after 4000 years injection in the Gassum Formation, off-shore between Norway and Denmark. The base case model with uniform layer thickness of 5 m in the whole model (a) and for refined layer thickness below the top equal to 2 m (b) and 1 m (c). From Bergmo et al. 2013 [5].

References

- [1] Aatos et al. (2006), Report No. M10.1/2006/3. Geological Survey of Finland (GSF)
- [2] Anthonsen et al. (2013), Energy Procedia 37, 5080-5092
- [3] Halland et al. (2014), CO₂ storage atlas - the Norwegian Continental Shelf. The Norwegian Petroleum Directorate.
- [4] Gislason et al. (2010), International Journal of Greenhouse Gas Control 4, 537-545.
- [5] Bergmo et al. (2013), Energy Procedia 37, 4863-4871.

- 1 One of the final outcomes from NORDICCS – the Nordic Competence Centre is a web-based **Nordic CO₂ storage atlas**, which will be public released in autumn 2015. The atlas will show the location of sites potentially qualified for CO₂ storage. The mapped storage sites will be ranked with respect to their suitability for CO₂ storage, based on geological properties and the state of knowledge, in order to point out the most prospective areas at present.
- 2 In the Nordic region four **CO₂ storage options** have been included in the mapping. It is potentially possible to store CO₂ in the pore space of **sedimentary formations (aquifers)**, in **depleted hydrocarbon fields** or in **porous basaltic lava**. The last opportunity is CO₂ reactions with mined ultramafic rocks or waste material from industry forming **carbonate minerals** (carbonisation).
- 3 The different **geological setting** in each of Nordic country yield different storage opportunities. In Finland the crystalline basement rocks only allow a minor potential for CO₂ storage by carbonisation of ultramafic rocks [1]. Sweden has the possibility to store in sedimentary formations in the south-eastern part of the Baltic Sea and South-West of Scania [2]. In Denmark and Norway the existences of extensive sedimentary basins offers the opportunity to exploit large pore volumes in aquifers for CO₂ storage [2] [3]. In Iceland the research project CarbFix investigate the potential for storage by injection of CO₂ saturated water into porous basalts [2] [4].
- 4 **Storage capacity** estimations is important in order to judge if a mapped storage site will be able to contain the required amount of CO₂ from one or several emission sources. **Static calculation** is a first approach to capacity estimates and is done by calculating the pore volume of the reservoir and multiplying it with a storage efficiency factor. If a potential storage site gives promising results, a **dynamic modelling** and injection simulation can give more detailed capacity estimations. In NORDICCS seven sites have been selected for modelling.
- 5 The **primary tools** to map subsurface storage sites are wells and seismic surveys. The **wells** can give information about the existence of porous reservoir rocks and overlying tight cap rocks. Analysis of well logs and cores can give information on porosity, permeability and deposition environment (facies). The **seismic survey** makes it possible to map the reservoir, cap rock and the faults between the wells, and to understand the geometry of the formations.

Our playground

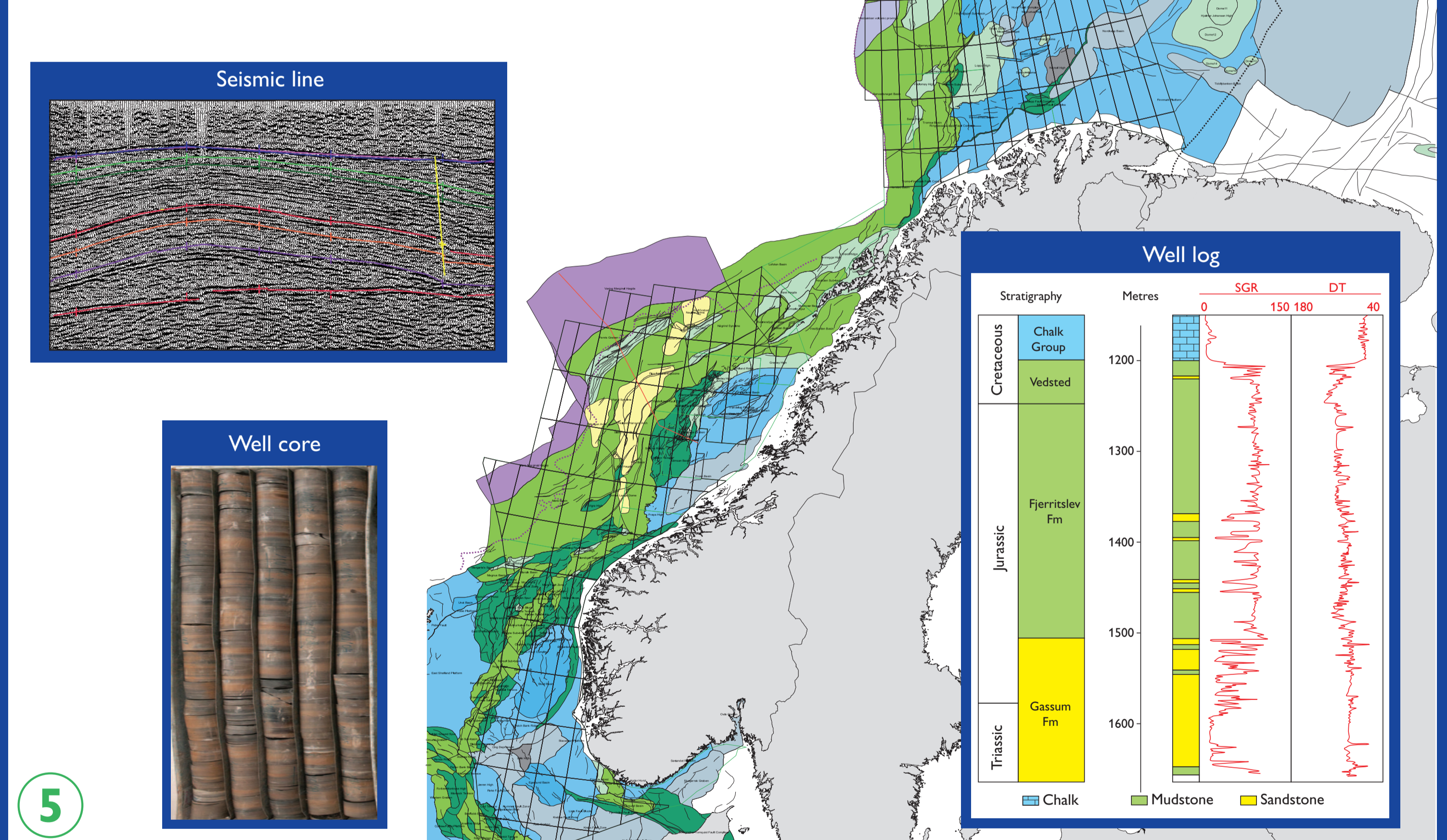


Illustration of the data used for mapping of CO₂ storage sites. Based on the Norwegian CO₂ storage atlas by the Norwegian Petroleum Directorate.

Acknowledgement

This publication has been produced with support from the NORDICCS Centre, performed under the Top-level Research Initiative CO₂ Capture and Storage program, and Nordic Innovation. The authors acknowledge the following partners for their contributions: Statoil, Gassco, Norcem, Reykjavik Energy, Vattenfall, Technology Centre Mongstad and the Top-level Research Initiative (Project number 11029).

