

Practical information guide

Open industrial conference

IC2 – Intelligent and Customized Tooling

17th September 2013

Transportation

From Oslo Airport (OSL) to Forskningsparken/MiNaLab:

With NOR-WAY Airport Coach (Flybusekspressen) towards Bekkestua, coach B28, to Gaustad/Rikshospitalet (appr. 45 min.). Cross the main road Ring 3 by the pedestrian bridge, then follow the walkway as far as Gaustadalléen and then take a right turn.

Cross the road where the tram line turns to the left. MiNaLab is the grey building on your left. Continue down Gaustadalléen 200 meters and you will find Forskningsparken on your left hand side.

(The NOR-WAY Airport Coach runs every 15 minutes during rush hours and at night.)



From Oslo Airport (OSL) to Rica Travel Hotel:

Airport Express Coach (Flybussen) to Professor Aschehougs Plass. The hotel is just 20-30 meters down Arbeidergata from the bus stop.



Between Rica Travel Hotel and Forskningsparken/MiNaLab:

Transport between the hotel (tram stop Tinghuset) and Forskningsparken/MiNaLab (tram stop Forskningsparken): Tram lines 17 (to Forskningsparken/MiNaLab marked Rikshospitalet, to the hotel marked Grefsen o/Sinsen) and 18 (to Forskningsparken/MiNaLab marked Rikshospitalet, to the hotel marked Ljabru). These routes go every 5-10 minutes from 7am to 7pm, then every 20 minutes until midnight. Travel time appr. 15 minutes. See the maps on the last page of this guide for the location of stops. The stop closest to Forskningsparken/MiNaLab, Forskningsparken, is just east of the sites, and the stop closest to the hotel, Tinghuset, is just north of the hotel, in Pilestredet.

Venue

Forskningsparken (Oslo Science Park)

Forskningsparken, situated between the campuses of the University of Oslo and Oslo University Hospital, provides offices and labs to more than 160 companies and research organizations.

MiNaLab

The services offered by the department of Microsystems and Nanotechnology of SINTEF ICT include feasibility studies, device design, prototyping, process development, and small and medium scale production in the MiNaLab cleanroom laboratory. MiNaLab is the only independent complete silicon processing line in Norway.

Read more on <http://www.sintef.no/home/Information-and-Communication-Technology-ICT/Microsystems-and-Nanotechnology/>



Hotel

Rica Travel Hotel

<https://www.rica-hotels.com/hotels/oslo/rica-travel-hotel/>

Negotiated rate: Standard single room incl. breakfast: 1015 NOK per night

Book rooms on telephone +47 22 00 33 00 or e-mail

rica.travel.hotel.oslo@rica.no.

Use booking reference 15597204 and book no later than 27th August for our discount rate.



Oslo Pass

We recommend that participants buy an Oslo Pass which covers travel by bus, tram and metro within the city limits (does not cover any travel from the airport), and also gives discounts and free entry at several museums and restaurants in Oslo.

The Oslo Pass can be purchased at the Ruter Service Point at Oslo Airport, or at other locations in Oslo including most hotels.

Reading the conditions of use before using the Oslo Pass is strongly recommended.

Some prices:

48 hours / 395 NOK

72 hours / 495 NOK

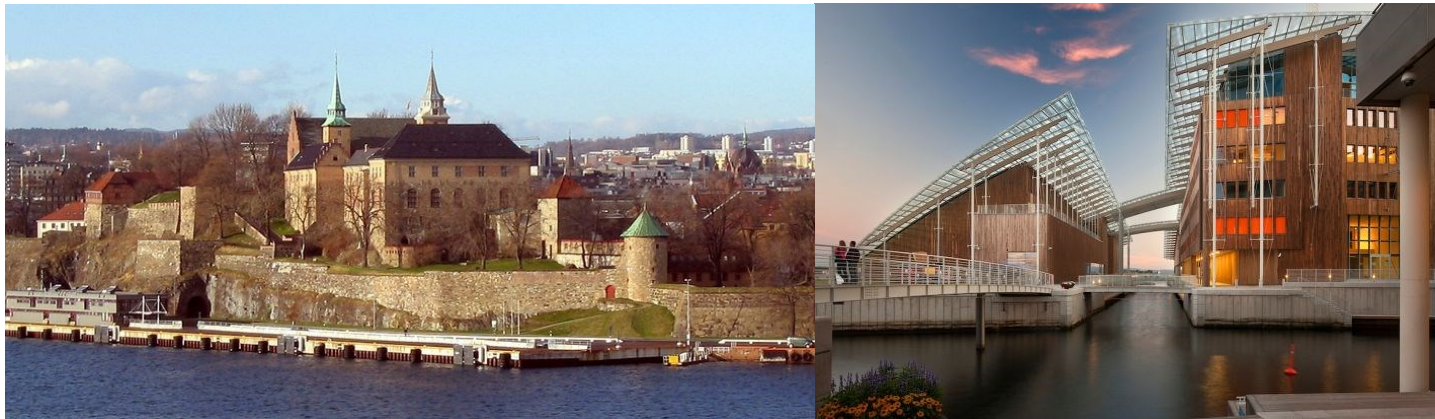
See <http://www.visitoslo.com/en/activities-and-attractions/oslo-pass/> for more information.

Oslo

<http://www.visitoslo.com/en/>

Suggestions:

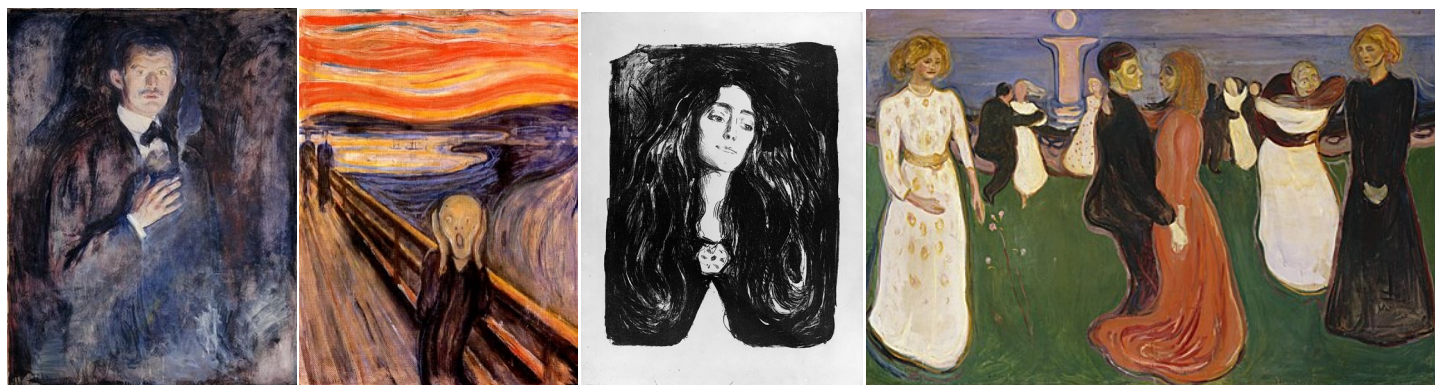
A walk from Akershus Castle to Tjuvholmen, taking you on a journey through architectural history. Parts of Akershus Castle date back as far as 1299, while Tjuvholmen is still in a phase of development, one of the most recent and striking buildings being the Astrup Fearnley Museum which opened last year.



A similar experience can be found in a walk from the Medieval Park (Middelalderparken) to Oslo Opera House. In the Medieval Park are the ruins of St. Clement's Church, St. Mary's Church and the former Royal Estate. Oslo Opera House, designed by Snøhetta, was completed in 2007. Its angled roofs flowing down towards the water are open to the public and a popular site for lunch breaks when the weather holds.



We also recommend visits to Holmenkollen, Vigelandsparken and Bygdøy. And especially, since we this year celebrate the 150th anniversary of the birth of Edvard Munch, the painter, we recommend that you visit one of the museums displaying anniversary exhibitions this season. Learn more about Munch, the anniversary, special exhibitions and events on <http://www.munch150.no/en>.



MAPS

Forskningsparken/MiNaLab



- 1) Forskningsparken, Gaustadalléen 21
- 2) MiNaLab, Gaustadalléen 23C
- 3) Gaustad/Rikshospitalet, stop for NORWAY Airport Coach (Flybussekspressen)
- 4) Forskningsparken, tram and metro stop

Map link: <http://kart.finn.no/?>

[lng=10.71330&lat=59.94396&zoom=16&mapType=normap&markers=10.71592,59.94216,r,GAUSTADALL%C3%89EN+21](http://kart.finn.no/?lng=10.71330&lat=59.94396&zoom=16&mapType=normap&markers=10.71592,59.94216,r,GAUSTADALL%C3%89EN+21)

Rica Travel Hotel



- 1) Rica Travel Hotel, Arbeidergata 4
- 2) Prof. Aschehougs plass, stop for Airport Express Coach (Flybussen)
- 3) Tinghuset, tram stop
- 4) Stortinget, metro stop

Map link: <http://kart.finn.no/?>

[lng=10.73624&lat=59.91423&zoom=17&mapType=normap&markers=10.74073,59.91415,r,ARBEIDERGATA+4](http://kart.finn.no/?lng=10.73624&lat=59.91423&zoom=17&mapType=normap&markers=10.74073,59.91415,r,ARBEIDERGATA+4)