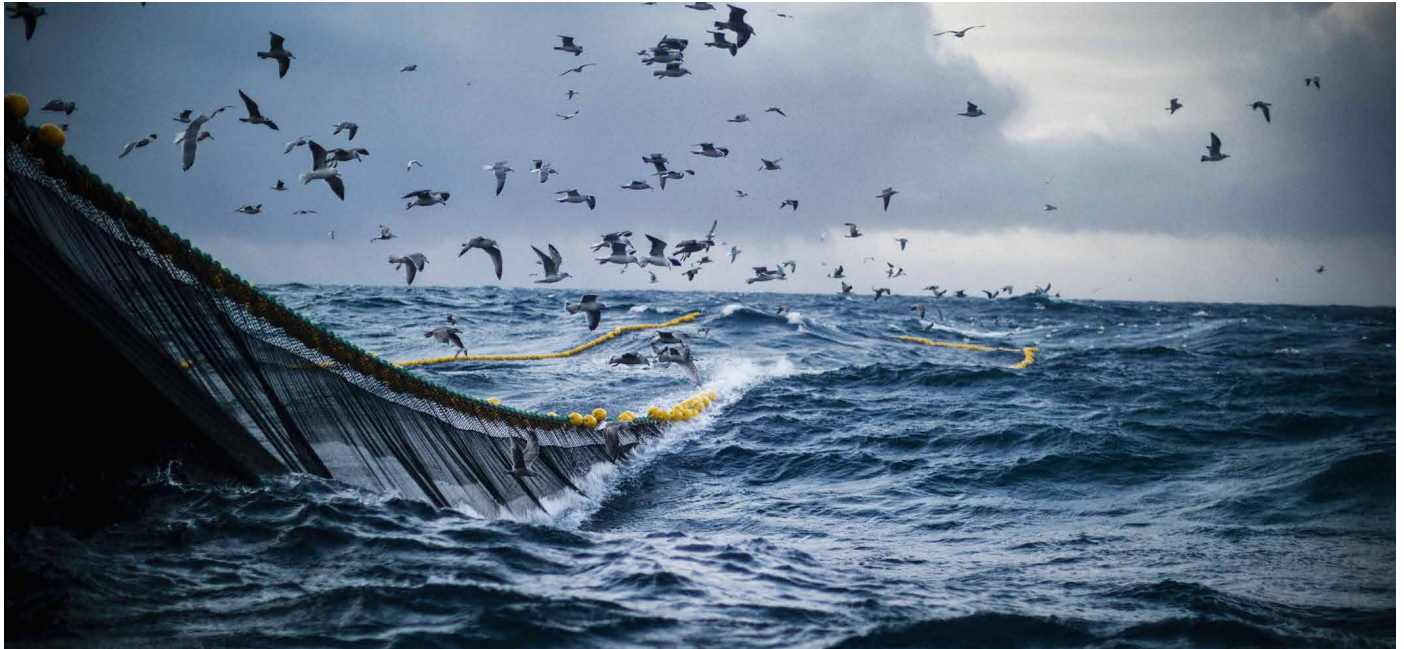


# SINTEF Ocean AS

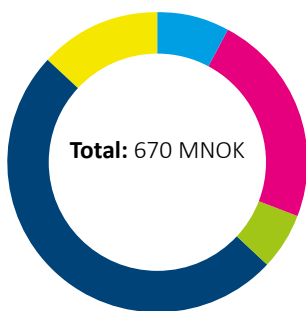
Photo: iStock-piolar666



SINTEF Ocean carries out research and innovation linked to the ocean space on behalf of national and international industrial clients in the maritime, offshore petroleum, fishing, and aquaculture markets. The Institute also has one of the world's leading research groups in the field of marine environmental technology.

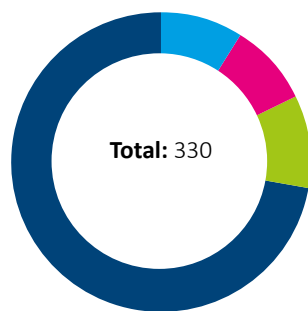
Our ambition is to maintain Norway's leading position in marine technology and biomarine research by combining outstanding professional research with our position at the global cutting edge in the fields of analysis and concept development.

**Funding sources**  
(% of net operational revenues)



RCN Grant funding	8%
RCN project funding	23%
Public sector funding	6%
Industrial and business sector	50%
International projects	13%
Other revenues	0%

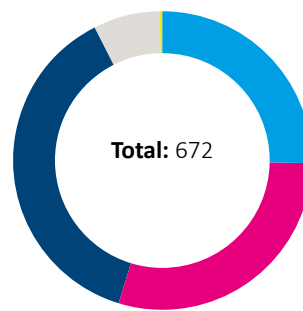
**Employees**



Administrative	29
Technical personell	31
Engineers	33
Research scientists	237 <sup>1</sup>

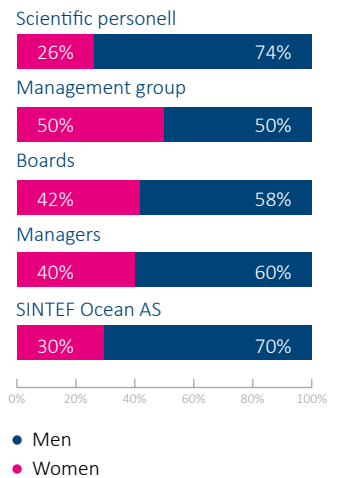
<sup>1</sup> 134 research scientists with a Ph.D.

**Publications**  
(incl. disseminations)



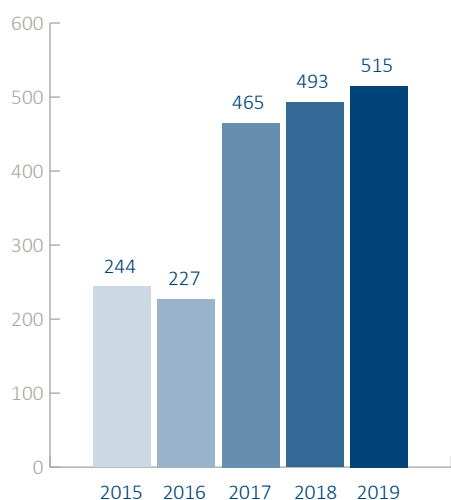
Scientific articles in periodicals, series or anthologies	175
Scientific monographs	0
Scientific presentations and posters	203
Reports	252
Popular scientific articles and presentations	41
Technical manuals, text books, etc.	1

**Equal opportunity**



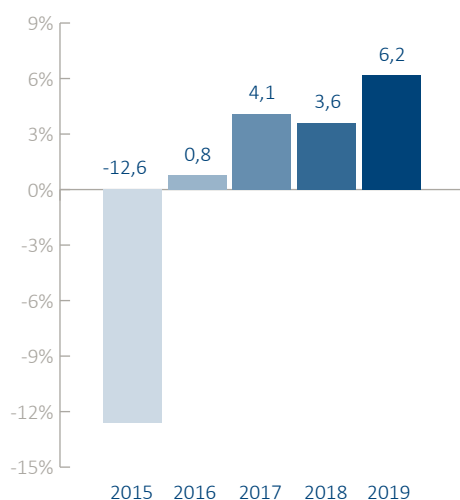
## Net operating revenues

(MNOK)



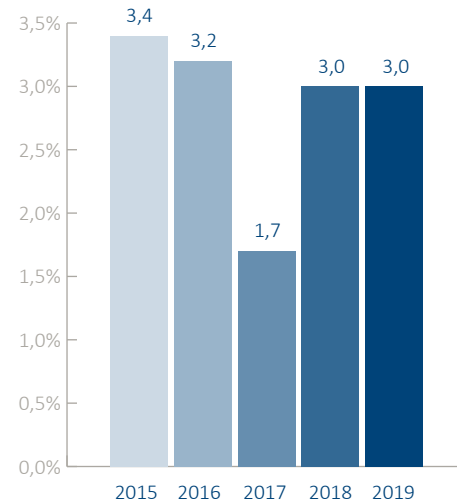
## Net operating margin

(%)



## Investments

Scientific equipment and buildings  
(% av Net operating revenues)



## Financial ratios

MNOK

FINANCIAL RESULT	2015	2016	2017	2018	2019
Gross operating revenues	303	279	602	629	670
Net operating revenues	244	227	465	493	515
<b>Operating profit</b>	<b>-31</b>	<b>2</b>	<b>19</b>	<b>18</b>	<b>32</b>
<b>Annual profit/loss</b>	<b>-29</b>	<b>1</b>	<b>18</b>	<b>19</b>	<b>34</b>
BALANCE					
Non-current assets	97	88	177	185	152
Current assets	272	262	581	629	709
<b>Total assets</b>	<b>390</b>	<b>369</b>	<b>758</b>	<b>814</b>	<b>860</b>
Equity	223	223	385	404	438
Liabilities	146	127	373	410	422
<b>Total liabilities and shareholders' equity</b>	<b>390</b>	<b>369</b>	<b>758</b>	<b>814</b>	<b>860</b>
PROFITABILITY					
Operating margin (%)	-12,6 %	0,8 %	4,1 %	3,6 %	6,2 %
Total return on investment (%)	-5,0 %	3,8 %	5,5 %	3,8 %	5,4 %
Return on equity (%)	-14,2 %	1,7 %	8,4 %	6,6 %	9,2 %
LIQUIDITY					
Net cash flow from operational activities	12	41	118	40	109
Working capital ratio (1)	1,9	2,2	1,6	1,6	1,7
CAPITAL ADEQUACY					
Equity (%)	57,1 %	60,6 %	50,8 %	49,6 %	50,9 %
Operative working capital	131	141	226	237	304